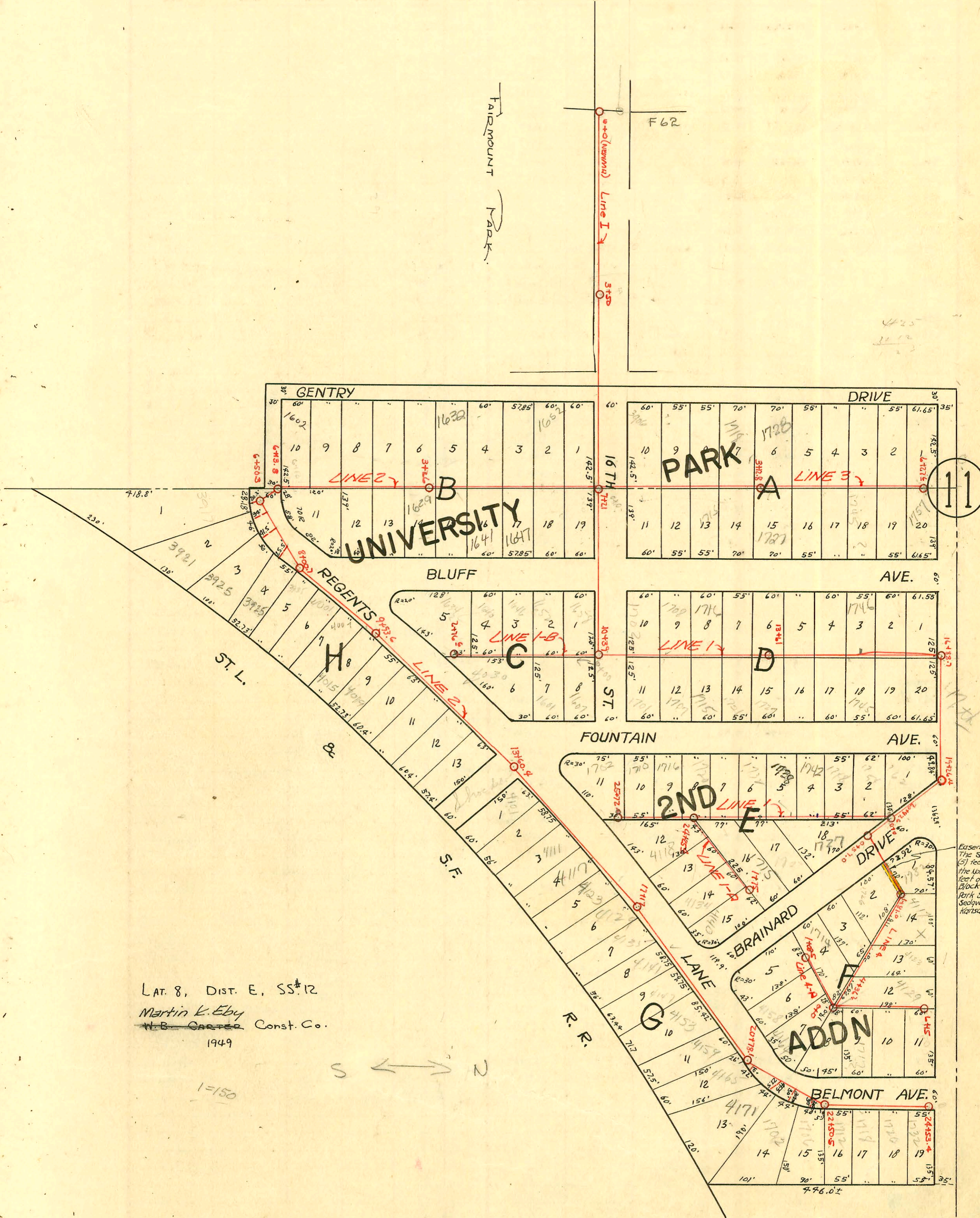
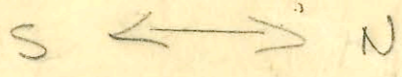




CONSTRUCTION RECORD SERVICE RECORD



LAT. 8, DIST. E, SS#12
 Martin K. Eby
 N.B. Carter Const. Co.
 1949



1=150

Easement # 23GB
 The Southeast five
 (5) feet of Lot 1, and
 the Northwest five (5)
 feet of Lot 2, all in
 Block F, University
 Park Second Addition,
 Sedwick County,
 Kansas.

CONSTRUCTION RECORD

SERVICE RECORD

STATION	ELEVATION		Depth	MANHOLE	4-INCH "Y" BRANCHES		No. of Permit		House Number		DATE OF PERMITS	
	Ground	Grade			North West	South East	North West	South East	North West	South East	North West	South East
0+0	188.4	177.96	10.93	0+0 New								
1+0	192.1	179.96	13.92									
2+0	197.2	181.96	15.32									
3+0	196.5	183.96										
3+50	199.1	184.96 183.00	14.88	3+50								
4+0	200.1	188.57	12.32									
5+0	201.6	189.71	12.30									
6+0	205.6	190.85	17.80									
7+0	206.4	191.99	14.68									
7+21	207.2	192.17 194.00	15.45	7+21								
8+0	208.1	198.10	10.18									
9+0	209.1	198.21	11.41									
10+0	210.7	198.31	12.84									
10+39	211.6	198.36	13.50	10+39								
11+0		198.62	12.97									
12+0		198.73	12.45									
13+0		198.84	11.10									
13+61		198.91	10.86	13+61								
14+0		198.95	10.88									
15+0		199.06	9.97									
16+0		199.17	8.40									
16+88.2		199.27 201.50	11.84 9.68	16+88.2								
17+0		201.63	10.03									
18+0		201.76	10.26									
19+26.8		201.90	9.70									
20+0		202.11	9.60									
20+47.6				20+47.6								
21+00		202.47	11.57									
22+0		202.60	11.90									
23+0		202.73	13.01									
24+0		202.85	13.56									
24+25.4		202.89	13.80	24+25.4								
25+0		202.98	14.27									
25+72		203.08	14.91	25+72								

Line I

Line 1-B

Line 1-A

Shots

Ground

No

No Ground Shots

123180
1715 N Fountain
2-12-60

8-29-63

2001-01801-7119A-4030E Regents-AE Henning-4" SCH40-TWIN clo, Fernco to clay 1' from main/meas 2' N of old msmt 143'S of MH 0700(1+43) 2V22

2000-00529-2/29/00-1754N Fountain-AE Henning-4" SCH40-Replace 9' in middle of line

2001-01263-5/22/01-1716N Bluff-Glover Ent-4" SCH40 Wye w/donut 133.5' S of MH 13161(12+27.5) ITWACO, 1V45

2002-02680-9/27/02-1746N Bluff-Morris Ditching-4" Predco Saddle (on msmt) 1-4" Fernco, 2H22

2003-02313-9/14/03-1647 N Bluff-Boo Rooter-Pipeburst replacement-4" PESDR17-city wye repair -4" Predco 149.7'S of MH 7+21(5+71.3) 4" 40 PVC-1V45, 3 Fernco, coupling

9611681 7-17-6 1601 N Fountain

#5457-3802 E 16th common reg-top-8-7-51-#B5964-Seal off-3802 E 16th-Morris Ditch-6/6/66

#12312-top 1715N Fountain Allison Pelly 2-12-60 (12+0.5)

B95-top-1751 N Fountain-White Sewer Service-8-29-63

