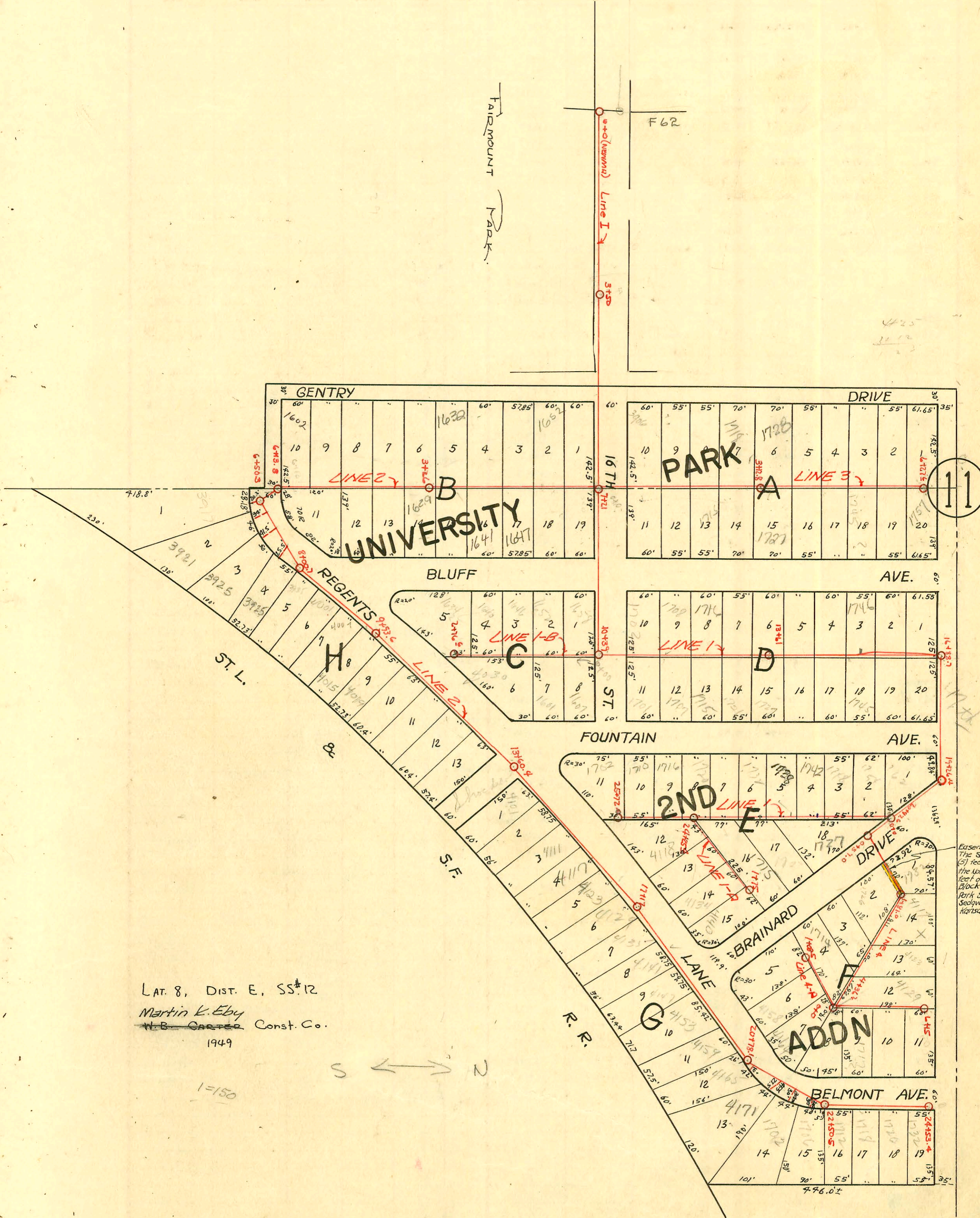
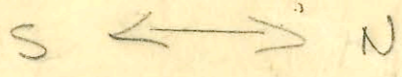




CONSTRUCTION RECORD SERVICE RECORD



LAT. 8, DIST. E, SS#12
 Martin K. Eby
 W.B. Carter Const. Co.
 1949



1=150

Easement # 23GB
 The Southeast five
 (5) feet of Lot 1, and
 the Northwest five (5)
 feet of Lot 2, all in
 Block F, University
 Park Second Addition,
 Sedgewick County,
 Kansas.

CONSTRUCTION RECORD

SERVICE RECORD

STATION	ELEVATION		Depth	MANHOLE	4-INCH "Y" BRANCHES		No. of Permit		House Number		DATE OF PERMITS	
	Ground	Grade			North West	South East	North West	South East	North West	South East	North West	South East
0+0	207.0	197.10	10.28	0+0	0+40'	0+37'	#5293	#959	1638 N. Bluff	1659 N. Bluff	5-21-53	7-21-49
1+0	210.0	197.65	12.83		+89°	+86°	#311	#960	1652 N. Bluff	1653 N. Bluff	3-9-54	7-21-49
2+0	212.5	198.11	14.93		1+52' 4" PVC CO 2+16' 4" PVC CO 4" 40' PVC CO	1+49' 4" PVC CO 2+13' 4" PVC CO 7+73'	#1299 #662 #967	#961 #962 #967	1646 N. Bluff 1647 N. Bluff 1648 N. Bluff	1641 N. Bluff 1642 N. Bluff 1635 N. Bluff	6-15-50 11-23-50 8-21-53	7-21-49 5-18-53 see next pg 7-21-49
3+0	212.9	198.56	14.75									
3+26	212.8	198.67	14.39	3+26	3+38'	3+35'	#1627	#968	1626 N. Bluff	1629 N. Bluff	7-15-50	7-21-49
4+0	211.4	199.01	11.88		+95°	+93°	#2329	#969	1616 N. Bluff	1617 N. Bluff	9-2-52	7-21-49
	212.9	198-56	14-75		+98°	+95°	#360	#971	1608 N. Bluff	1609 N. Bluff	12-23-52	7-21-49
5+0	208.3	199.46	9.34		5+61°		#4329		1602 N. Bluff		3-2-53	
6+0	206.0	199.91	6.47									
6+13.8	205.5	199.97	5.60	6+13.8								
6+50.3	200.44	4.98	6+50.3	6" stub South					2003-01035	3917 R	see next pg	10-7-52
7+0	200.83	5.57	7+0	6" stub South					#1066	3725 R	see next pg	8-1-49
				6" stub South					#1067	3725 R	see next pg	4-17-53
				6" stub South					#1068	3725 R	see next pg	8-1-49
8+0	201.58	6.73	8+00.7	8+00.7	Y South							
					8+14'				#1069	3935		8-1-49
					+69°				#1070	4001		1-2-51
9+0	202.33	9.35	9+93.6	9+93.6	9+25'				#1071	4001		8-1-49
	203.05	11.81			+73°				#1072	4001		10-8-55
	205.00	9.86			10+36'				#1073	4001		8-1-49
					+97°				#1074	4025		8-1-49
11+0	205.55	9.33			11+60'				#1075	4031		8-1-49
12+0	206.07	10.33			12+24.5				#1076	4037		7-30-50
					+78.5				#1077	4043		8-1-49
13+0	206.59	10.41										
13+60.4	206.91	10.51		13+60.4								
14+0	210.11	7.84			14+08.4				#1486	4101		9-2-49
					+64.7				#1487	4107		9-2-49
15+0	210.38	8.39										
					15+25.4				26862	4111		1-14-51
					4" 54" 40				#1488	4117		9-2-49
					15+84.5				#1489	4117		9-2-49
16+0	210.65	8.42										
					see below				99-159977	4122		4-9-54
					16+45.0				#1490	4122		9-2-49
17+0	210.92	8.78			17+00.3				#1491	4129		10-14-53
17+17	210.97	8.54	17+17.0	17+17.0	+58.2				#1492	4135		9-2-49
					4" 48.5 40				#1493	4141		8-31-49
18+0	211.19	9.61			18+18.2				#1494	4147		9-2-49
					+85.7				#1557	4153		9-2-49
19+0	211.46	8.46			19+46.2				#1578	4159		9-12-49
20+0	211.73	8.23			20+50.2				#1577	4159		9-12-49
20+78.2	211.91	8.27	20+78.2	20+78.2	20+90.4 6" stub South				#1579	4165		9-12-49
21+0	212.14	8.19			21+91.5 6" stub				#1580	4171		9-12-49
					+87.8 6" stub				#1581	1702 N. Bluff		9-12-49
22+0	212.41	8.44			22+24.5 6" stub				#1582	1706 N. Bluff		9-12-49
22+50.5	212.55	8.32	22+50.5	22+50.5	+65.5				#1583	1712 N. Bluff		9-12-49
23+0	212.89	8.42			23+14.5				#1584	1718 N. Bluff		9-12-49
					23+77.5				#1585	1726 N. Bluff		9-12-49
24+00	213.16	8.54			24+32.2				#1586	1732 N. Bluff		9-12-49
24+53.4	213.30	8.65	24+53.4	24+53.4	Y East							
0+0	207.2	192.17	15.45	0+0 = 7+78'	0+67'	0+64.4	#1295	#952	3906 N. Bluff	1701 N. Bluff	6-15-50	7-21-49
1+0	205.2	192.40	13.16		1+29.0	1+26.0	#953	#954	1707 N. Bluff	1707 N. Bluff		7-21-49
					+84.0	+81.0	#1756	#954	1715 N. Bluff	1715 N. Bluff		7-21-49
2+0	205.0	192.50	12.91		2+36.0	2+33.0	10711	#955	1718 N. Bluff	1721 N. Bluff	6-16-59	7-21-49
3+0	200.6	192.60	8.23		3+23.2	3+20.2	#2259	#956	1725 N. Bluff	1725 N. Bluff	12-21-53	7-21-49
3+12.8	192.61	7.83	3+12.8	3+12.8	+78.0	+75.0	#7244	#957	1733 N. Bluff	1733 N. Bluff	12-16-53	7-21-49
4+0	202.2	192.70	10.07		4+35.0	4+32.0	#813	#3135	1740 N. Bluff	1739 N. Bluff	5-3-54	1-24-50
					+90.0	+87.0			1740 N. Bluff	1740 N. Bluff		10-23-51
5+0	204.5	192.80	11.89		5+46.5	5+43.5			1751 N. Bluff	1751 N. Bluff		4-4-51
6+0	205.0	192.90	12.86		6+05.2	6+02.2			1757 N. Bluff	1757 N. Bluff		4-4-51
6+27.2	205.9	192.93	13.71	6+27.2			#2722		1757 N. Bluff	1757 N. Bluff	6-26-67	

Line 2

Line 3

#82921 - Top - Release Pkg. + Wtng. - 1780 N. Bluff - 3-7-65 (5+53.6)
 #6171 - Top - 4015 Regent's - Reynolds Pkg. - 8-11-66 (top in m. n. 9+93.6)
 #94-159977-9-30-54-4123 Regent's - Replaced 15 Ft. of pipe at lower end from main. City made w repair 4" sdr. 35

SERVICE RECORD

CONSTRUCTION RECORD

2003-00697- 3/20/03 - R.P. Campbell 1641 N Bluff. City wye repair 113' N of MH 3426 (2+13) 4" Predco - 1V22, 1V45, 1TWINCO

2002-02754- 12/7/02- 3917 Regents- Glover Ent- 6x4 Fernco tied to 6" from MH -1 45 cast iron Original- 2H45, 2H22, 1-6x4 Fernco, 1-4" Fernco
2003-01035- 4/12/03 - 3925 E Regents Ln- 6" PVC to City wye repair - 6" clay wye (on msmt) PVC from house 6" no fittings - WICHITA EXC

See pg. (134.)

2000-00074- 1/11/00- 4117 E Regents- AS Neal- 4" 40 PVC- 1V45- Replace to within 5' of Main

2003-02257- 8/28/03- 4171 Regents- Olson Swr - 4" 40 PVC 1TWINCO + 8' of line, 2 Fernco