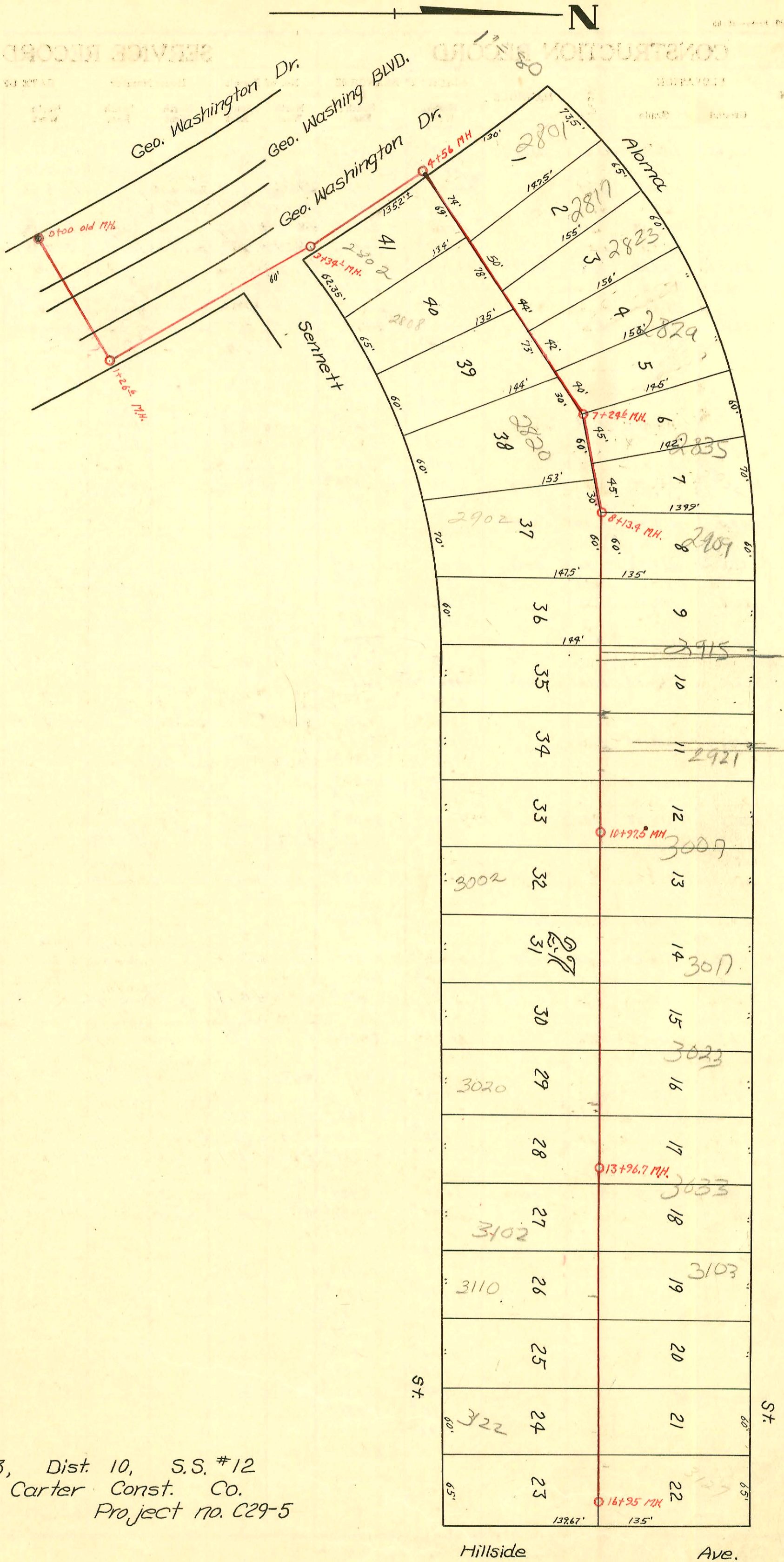


RECORD SERVICE RECORD

CONSTRUCTION RECORD



Lat. 3, Dist. 10, S.S. #12
 W. B. Carter Const. Co.
 1949 Project no. C29-5

CONSTRUCTION RECORD

SERVICE RECORD

STATION	ELEVATION		Depth	MANHOLE	4-INCH "Y" BRANCHES		No. of Permit		House Number		DATE OF PERMITS	
	Ground	Grade			North West	South East	North West	South East	North West	South East	North West	South East
0+0	203.00	203.00	10.93	0+0								
0+57 ^e		203.53	11.28	0+57 ^e								
1+0		203.71	11.09		Y North 1+17 ^e		200-02205 #2248		1732 S/D Bramard		10-27-49	
1+81 ^e		204.47	11.44	1+81 ^e	4 West	4 East						
2+0		204.93	11.81		2+03 ^e	2+00 ^e	#2247 #2251	1726 Bramard	4127 E. 17th	10-28-49	10-28-49	
2+0		205.64	12.87		3+12 ^e	3+07 ^e	#2246 #2250	1720 Bramard	4123 E. 17th	10-28-49	10-28-49	
					3+80 ^e	3+77 ^e	#2245 #2249	1714 R Bramard	4117 E. 17th	10-28-49	10-28-49	
4+0		206.35	13.22									
4+36 ^e		206.58	13.34	4+36 ^e								
5+0		207.26	12.90									
6+0		207.97	12.06									
6+15 ^e		209.04	12.07	6+15 ^e								
0+0		207.50	12.01	0+0		Y South 0+09.5		#2240	4164 Regents		10-28-49	
1+0		207.60	11.05			449 ^e		#2239	4158 Regents		10-28-49	
1+09 ^e		207.61	11.11	1+08 ^e		1+00		#2238	4152 Regents		10-28-49	
0+0	102.69	96.62	6.37	0+0								
1+0	102.45	96.72	5.73									
1+26.6	102.20	96.75	5.75 in	1+26.6								
2+0	102.34	97.02	5.52									
3+0	102.43	97.12	5.51									
3+34 ^e	102.35	97.15	5.50	3+34 ^e								
4+0	102.83	97.22	5.91									
4+56	102.60	97.28	5.89 in	4+56	Y south	Y north						
5+0	103.33	97.52	6.11									
6+0	103.03	97.62	5.74									
7+0	102.88	97.72	5.36									
7+24 ^e	102.91	97.79	5.74 in	7+24 ^e								
8+0	102.97	97.82	5.35									
8+13 ^e	100.00	97.84	5.11 in	8+13 ^e								
9+0	103.56	97.92	5.94									
10+0	103.41	98.02	5.69									
10+97 ^e	103.04	98.13	5.21	10+97 ^e								
11+0	103.04	98.13	5.21									
12+0	102.47	98.22	7.55									
13+0	102.58	98.32	4.56									
13+96 ^e	102.56	98.42	4.44	13+96 ^e								
14+0	102.56	98.42	4.44									
15+00	102.65	98.52	4.43									
16+00	103.05	98.62	4.73									
16+95 ^e	103.94	98.72	5.42	16+95 ^e								

Line 4

Line 4-A

3-10-12

No Ground Grades

#2242 - Inf. 1711 N. Belmont - 10-28-49 - Wichita P. Co.
 #2582 - Inf. 2908 Bennett - 11-28-49 - Frederick P. Co.
 #2663 - Inf. 2909 Aloma - 10-11-50 - Frederick P. Co.
 #3267 - Inf. 3025 Aloma - 12-1-50 - Frederick P. Co.
 #B343 - top - 3111 Aloma - 11-1-53 - City Bros. Co. (15+44)