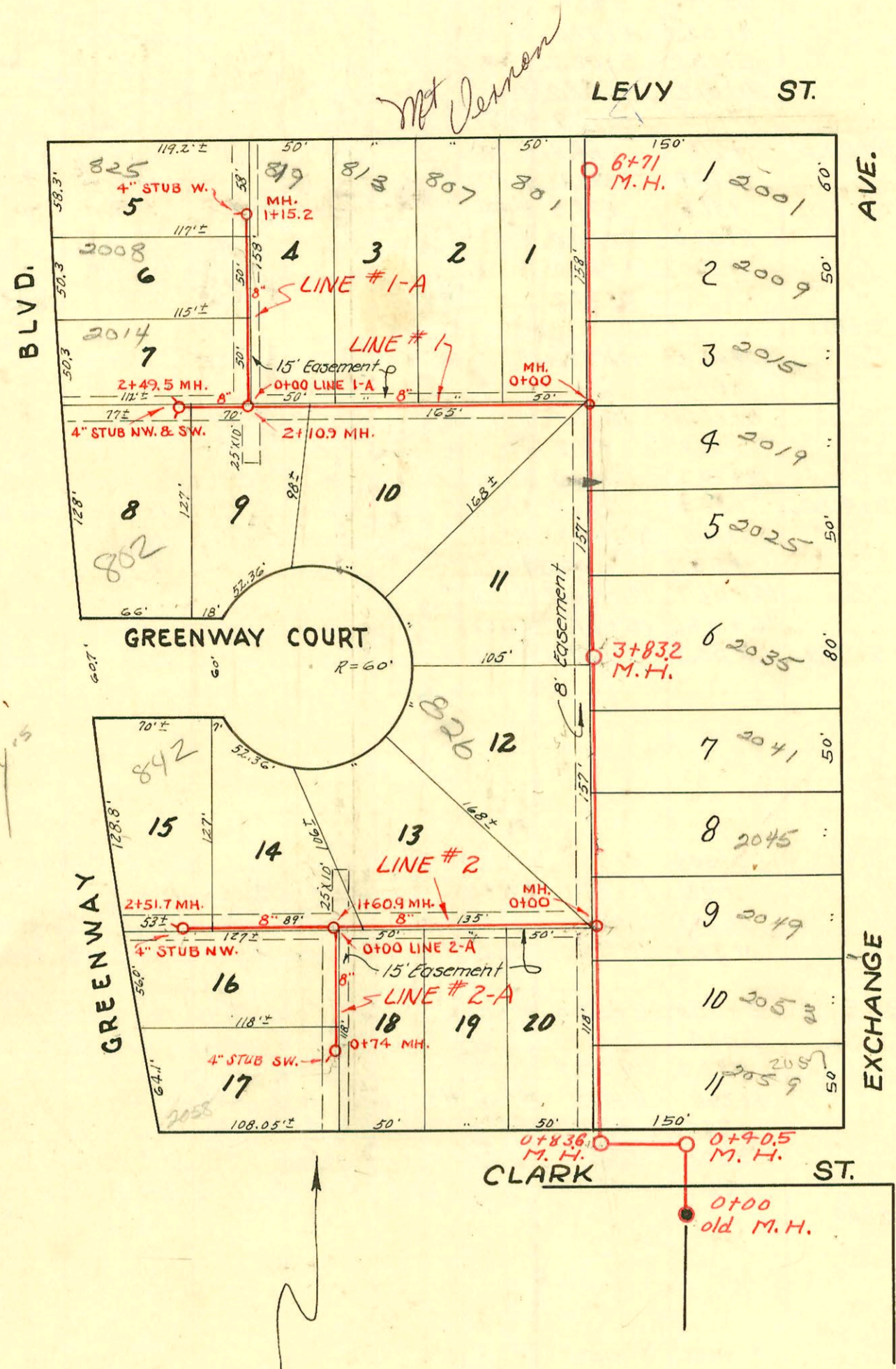


CONSTRUCTION RECORD

BLVD. LEVY ST. AVE. EXCHANGE ST. CLARK ST.



Scale 1"=80'



*Met Vernon*

*4" x 15"*

LAT. 23, DIST. B, S.S. # 20  
 W. E. EVANS ADDITION  
 UTILITIES CONT. INC.  
 BOOK M-Misc., PRIVATE JOB  
 Nov. 13, 1951

LAT. 9, DIST. B, S.S. # 20  
 CITY OF WICHITA, KANSAS  
 W. B. CARTER OCT., 1949  
 PROJECT NO. C29-29

CONSTRUCTION RECORD						SERVICE RECORD						
STATION	ELEVATION		Depth	MANHOLE	4-INCH "Y" BRANCHES		No. of Permit		House Number		DATE OF PERMITS	
	Ground	Grade			North West	South East	North West	South East	North West	South East	North West	South East
0+0	100.0	92.83	7.59	Old M.H.								
0+405	99.2	92.87	6.90 in	0+0								
0+83.6	99.8	93.06	7.54 out	0+405								
1+0	99.8	93.33	6.88 out	0+83.6								
					1+14.6	1+11.8			204-204-127	2057 R		12-9-46
					1+32.5	+57.4			# 2068	Exchange		10-15-49
					1+60.4				# 2067	2055 R		10-15-49
					1+82.4					Exchange		
2+0	99.0	93.44	5.87		2+09.1	2+08.1	#6458	# 2066	802 W. 2049 R	11-15-51	10-20-49	
					+31.1	+56.0		# 2065	802 W. 2045 R		10-15-49	
					+59.0				Exchange		10-15-49	
					2+83.4							
3+0	100.1	93.54	7.15		3+08.5	3+05.5	#7088	# 2064	826 Greenway 2041 R	10-10-46	10-15-49	
3+83.2	103.1	93.82	10.01	3+83.2	3+35.8	+57.6	#6447	# 2063	826 Greenway 2037 R	11-15-51	10-13-49	
					3+80.8							
					3+88.6							
4+0	103.2	93.64	10.07		4+13.4	4+10.4		# 2064	2036 R		1-8-85	
					4+39.6	+38.6		# 2063	2035 R		10-15-49	
					+62.4	+84.3		# 2062	2019 R		10-15-49	
					+87.3							
5+0	101.6	93.74	8.25		5+12.5	5+37.0		# 2061	2015 R		4-3-90	
					+40.0	5+83.3		# 2060	2009 R		10-15-49	
					+60.8				Exchange		10-15-49	
					+86.3							
6+0	99.0	93.84	5.61		6+13.8	6+38.0		# 2059	2001 R		3/31/82	
6+71.0	99.7	93.91	6.15	6+71.0	+39.0	+83.4			Exchange		10-15-49	
					+66.4							
LAT. 23, DIST. B, S.S. # 20												
Line #1												
0+00	99.7	94.00	5.7	0+00 New M.H.	Y NORTH 0+28.6	Y SOUTH	#6451		801 W. 2007 R		11-15-51	
					+70.5		#6452		807 W. 2007 R		11-15-51	
1+00	98.7	94.40	4.3		4" PESDR17 1+22.2	0+95.0	#6453	#6446	814 W. 2007 R	10963	11-15-51	11-15-51
						1+98.1	#6445		808 W. 2007 R		11-15-51	
2+00	99.9	94.80	5.1									
2+10.9	100.4	94.84	5.5	2+10.9								
2+49.5	102.4	95.00	7.4	2+49.5	(4" stub S.W. & N.W.)		# 118	# 6456	802 W. 2014 W. 2007 R		2-19-52	11-15-51
Line 1-A												
0+00	100.0	95.02	5.0		Y WEST 4" SCH40 0+64.0	Y EAST 0+67.0	#6455	#6454	2008 R	see below	9-27-00	11-15-51
1+00	101.5	95.40	6.1									
1+15.2	100.8	95.46	5.3	1+15.2	(4" stub W)		# 116		2002 R		2-19-52	
Line #2												
0+00	99.4	93.70	5.7	0+00 New M.H.	Y NORTH 0+27	Y SOUTH 0+24						
1+00	99.4	94.10	5.3		1+16.7	1+19.7	#6449	#6460	808 W. 2007 R		11-15-51	11-15-51
1+60.9	100.1	94.34	5.8	1+60.9								
					1+77		#6450		808 W. 2007 R		11-15-51	
						1+99	#6457		2052 W. 2007 R		11-15-51	
2+00												
2+51.7	98.4	94.70	3.7	2+51.7	(4" stub N.W.)		# 119		842 R		2-19-52	
Line #2-A												
0+00	99.9	94.48	5.4	0+00 = 1+60.9 in Line #2								
0+74.0	99.9	94.80	5.1	0+74.0	(4" stub S.W.)		# 117		2058 R		2-19-52	

2003-02627 10/9/03 813 W Mt Vernon - Rob Rooter - PESDR17 - Pipe burst replacement - 4" co @ house, shallow, 4" Wye repair 88.7' E of MH 2+10.9 (1+22.2) 1+22.2 (line along SPL)

2000-01735-2008 S Greenway - 4" SCH40 - Reddi - Repl 5' 1/2 section to point 27' 1/2 from main

# 6448 - 826 Greenway Court - 11-14-51 - Cherry Pkg. Co.