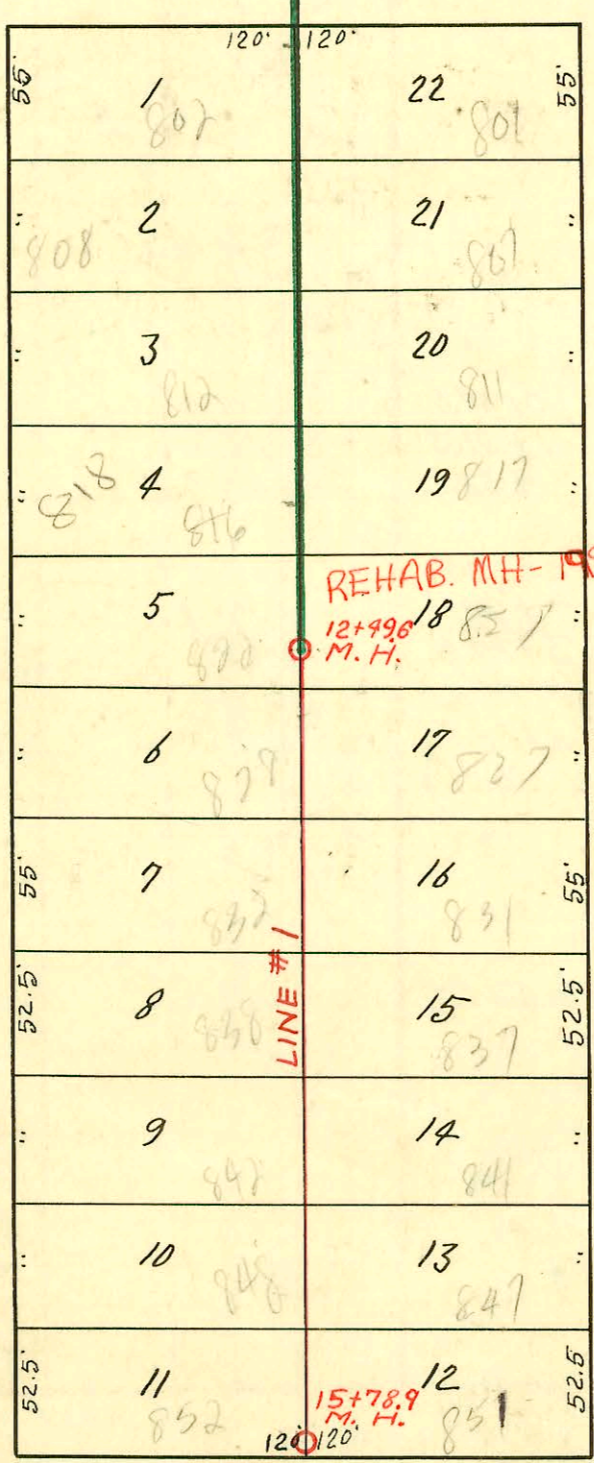
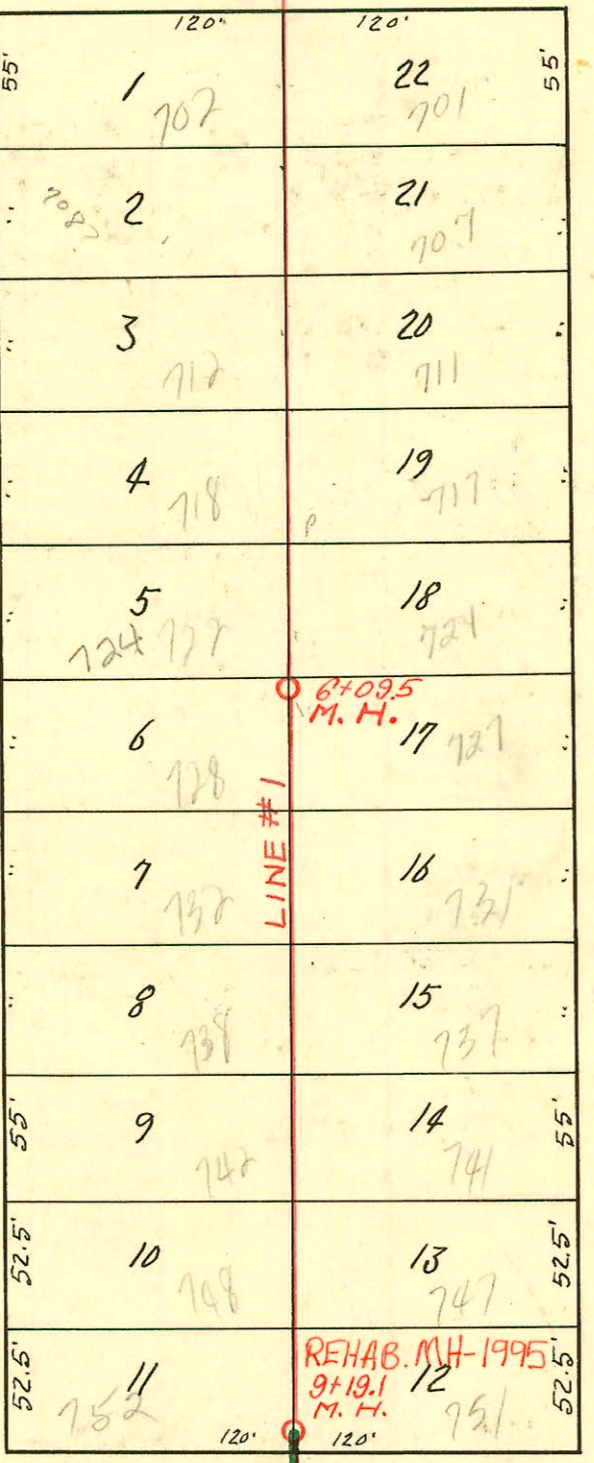
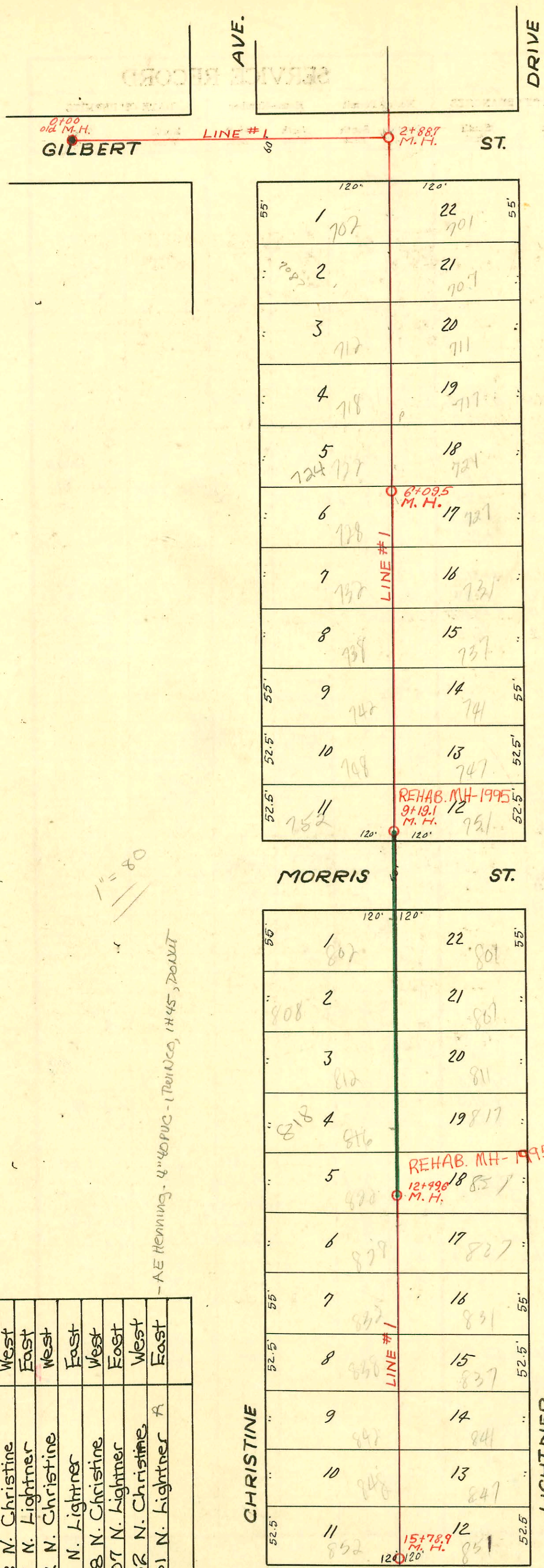


RECONNECTIONS

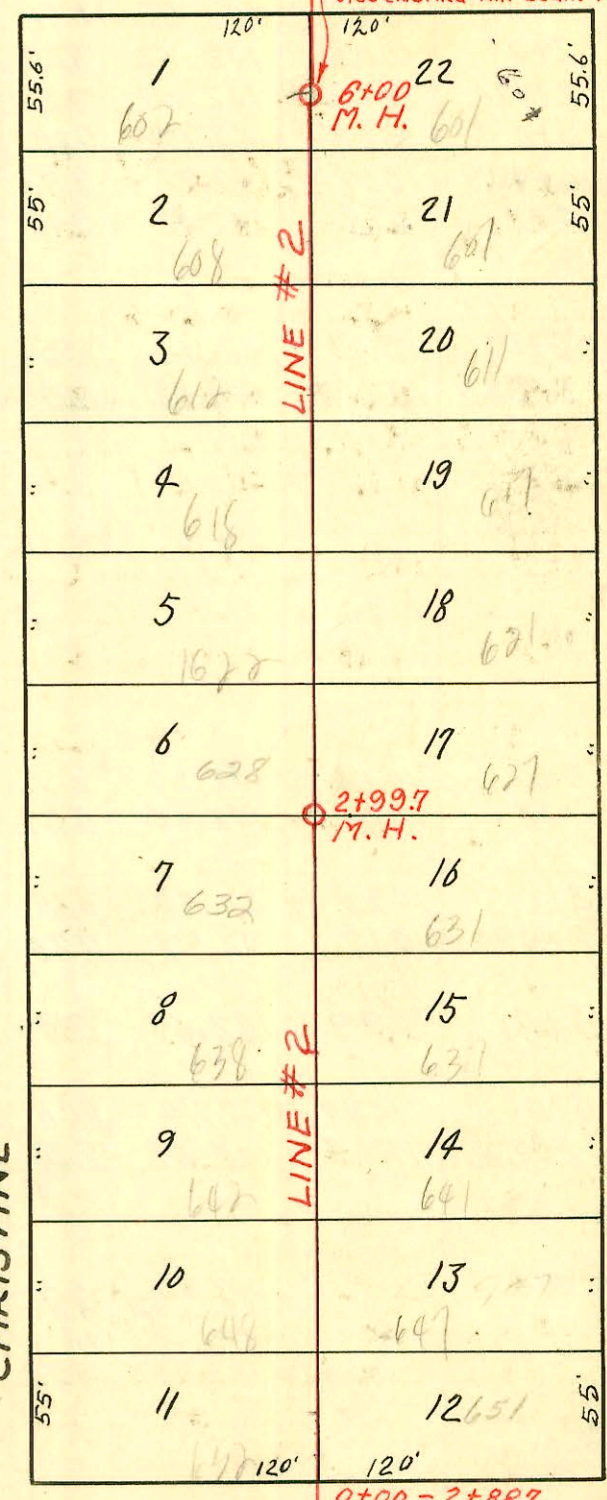
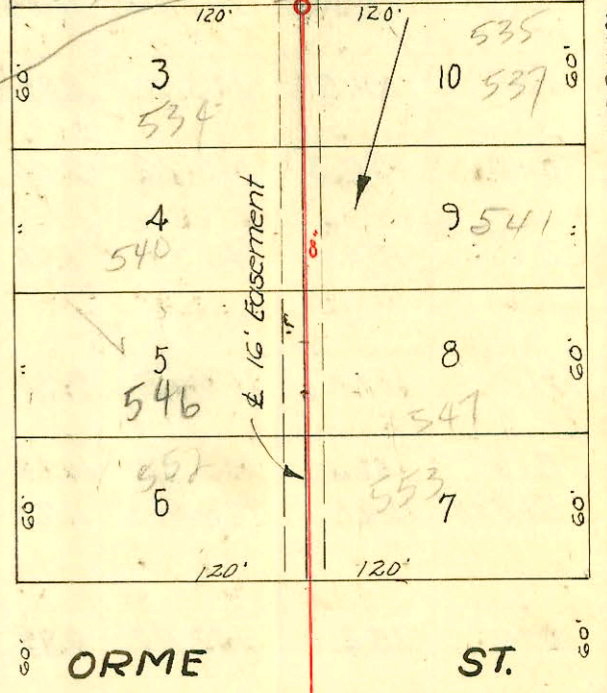
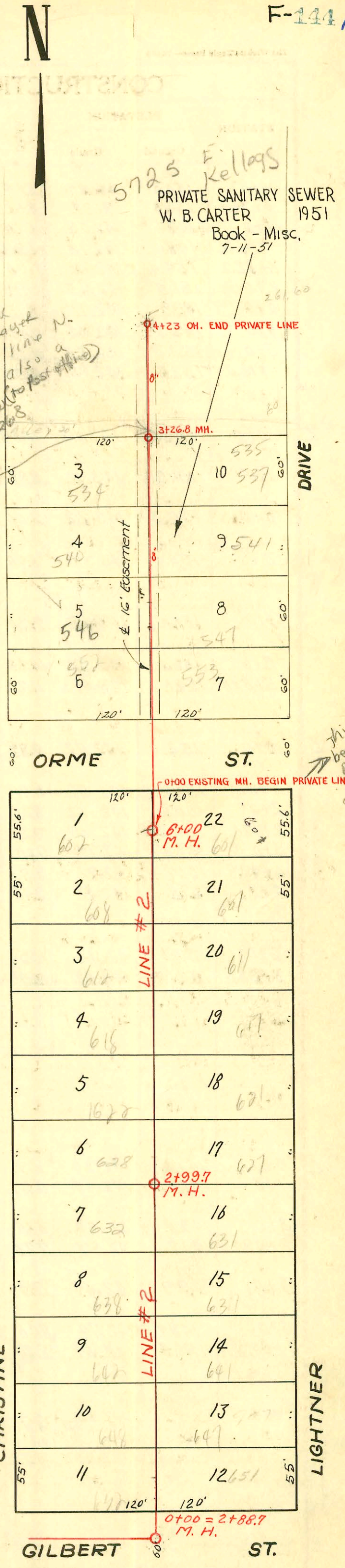
STA.	ADDRESS	DIRECTION
17+26.3	822 N. Christine	West
17+28.1	821 N. Lightner	East
11+76.6	818 N. Christine	West
11+73.4	817 N. Lightner	East
11+71.5	812 N. Christine	West
11+18.7	811 N. Lightner	East
10+63.3	808 N. Christine	West
10+60	807 N. Lightner	East
10+02.4	802 N. Christine	West
9+98.9	801 N. Lightner A	East

- AE Henning, 4" 40 PUC - (TRONCO, 1145, 2001)

1" = 80'



City Inspector UPRN Snyder advised that the 8" line N. at MH and also a 6" line N. (to post office) at MH 2+26.8



5725 E Kellogg
PRIVATE SANITARY SEWER
W. B. CARTER 1951
Book - Misc.
7-11-51

This would be City maintained
9/21/90

LINCOLN AVE
SANITARY SEWER RESPONSE PLAN
PHASE - IA
PROJ. NO. 468-8240 (623124)
BUILT BY INSITUFORM PLAINS, INC.
BOOKED 3-3-96 FROM AS BUILTS

LAT. 40. D.C.S. S.S. # 12
W. B. CARTER OCT. 1949
PROJECT NO. C 29-38

