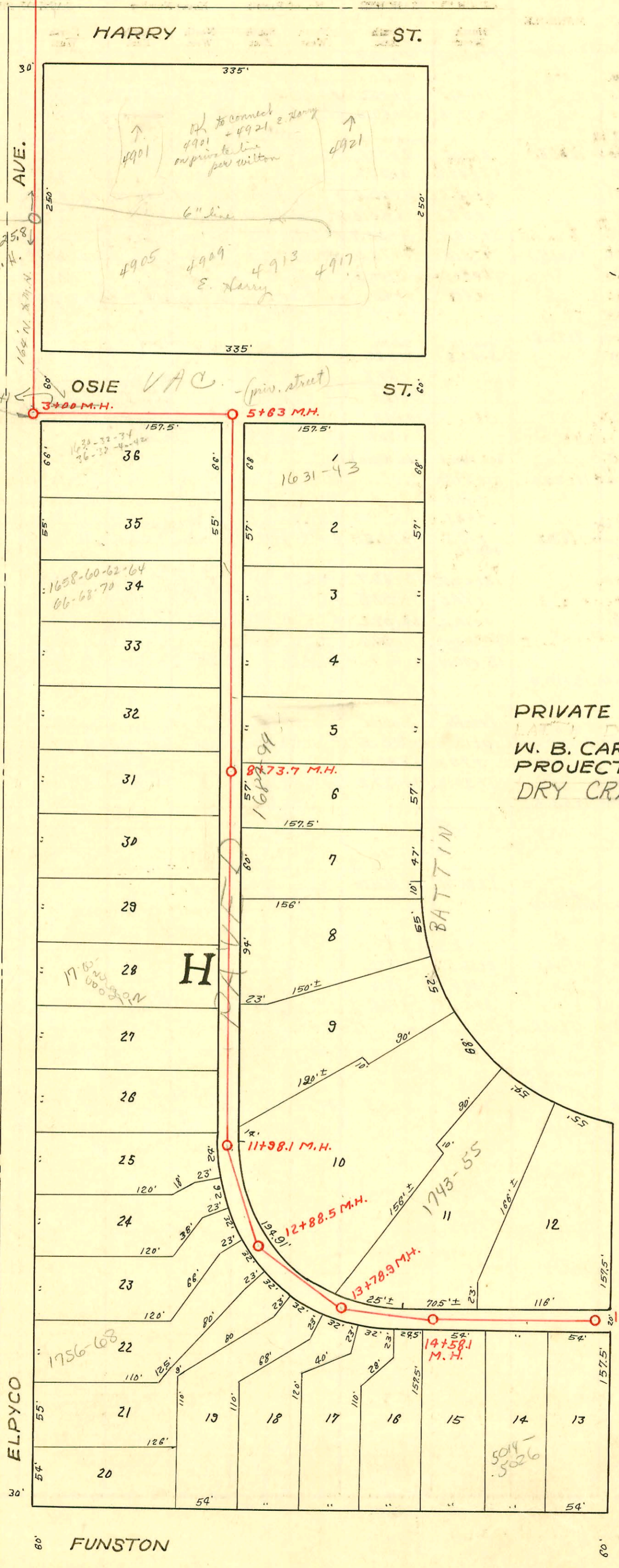


CONSTRUCTION RECORD

SERVICE RECORD



PRIVATE JOB - RES. H  
 DIST. 1, WAD. INDUSTRY SEWER  
 W. B. CARTER OCT. 1949  
 PROJECT NO C 29 - 34  
 DRY CREEK S.S.

20 F-226  
 2+25.8  
 M.H.  
 164 M. X M. N.

389.8 M.H.  
 3+00 M.H.  
 OSIE VAC. (priv. street)  
 5+63 M.H.

1" = 60'

ELPYCO

AVE.

BATTIN

COUNTRYSIDE

FUNSTON

ST.

CONSTRUCTION RECORD						SERVICE RECORD						
STATION	ELEVATION		Depth	MANHOLE	4-INCH "Y" BRANCHES		No. of Permit		House Number		DATE OF PERMITS	
	Ground	Grade			North West	South East	North West	South East	North West	South East	North West	South East
0+00	149.3	137.00	12.58	0+00								
1+00	151.5	137.10	14.63									
2+00	151.2	137.20	14.29									
3+00	151.2	137.30	14.14									
3+89.8	152.1	137.39	14.57 in	3+89.8	Y North	Y South						
4+00	152.1	137.60	14.73		4+80.2	4+30.1						
5+00	152.4	137.70	14.94		Y West	Y East						
5+63.0	152.1	137.76	14.59 in	5+63.0								
6+00	152.4	138.00	14.87		6+94.2	6+91.2						
7+00	151.4	138.10	13.58		7+22.4	7+19.4						
8+00	151.5	138.20	13.50		8+12.2	8+09.2						
8+73.7	151.3	138.27	13.32	8+73.7	+87.4	+84.4						
9+00	151.6	138.30	13.52									
10+00	151.0	138.40	12.86		10+28.8	10+23.8						
11+00	151.0	138.50	12.73		11+55.6							
11+98.1	150.4	138.60	12.07 in	11+98.1								
12+00	150.4	138.60	12.07		12+30.6	12+28.3						
12+88.5	149.4	138.69	10.91 out	12+88.5	Y So. West	Y South						
13+00	149.4	138.70	10.93		13+08.2							
13+78.9	149.0	138.78	10.32 in	13+78.9	+13.9	13+99.8						
14+00	148.8	138.80	10.04		14+48.7							
14+58.1	148.2	138.86	9.77 in	14+58.1								
15+00	148.3	138.90	9.69		15+40.0							
15+99.8	148.0	139.00	9.24	15+99.8	15+49.0	+55.1						

2001-01477-611401-1631-16433 Battin- Overnight Sucs- 4"sch40 - 4TWIN CO, 4KICKOUTS- 4V45- 3H45- Fernco to clay @ street, 4 Fernco to CI @ structure

2000-01836-1700 S Elypc- Forshee Pkg - 8/1500- 4"sch40, 4XL6 Fernco @ Curb, Fernco to clay 40' from main, 4XL6 Fernco @ Curb, 4-TWIN CO, 4-KICKOUTS, 5H45, 3-4" WYES, 4-4" Fernco

# 2045 - Jap - 4928-30-32-34-36-38-40-E, Frunston - 10-14-49. J. N. Kanne

068951 - Jap - 1658 Bldg. 2 - Deterrmann - 10-16-78 (7+492)

Elypc