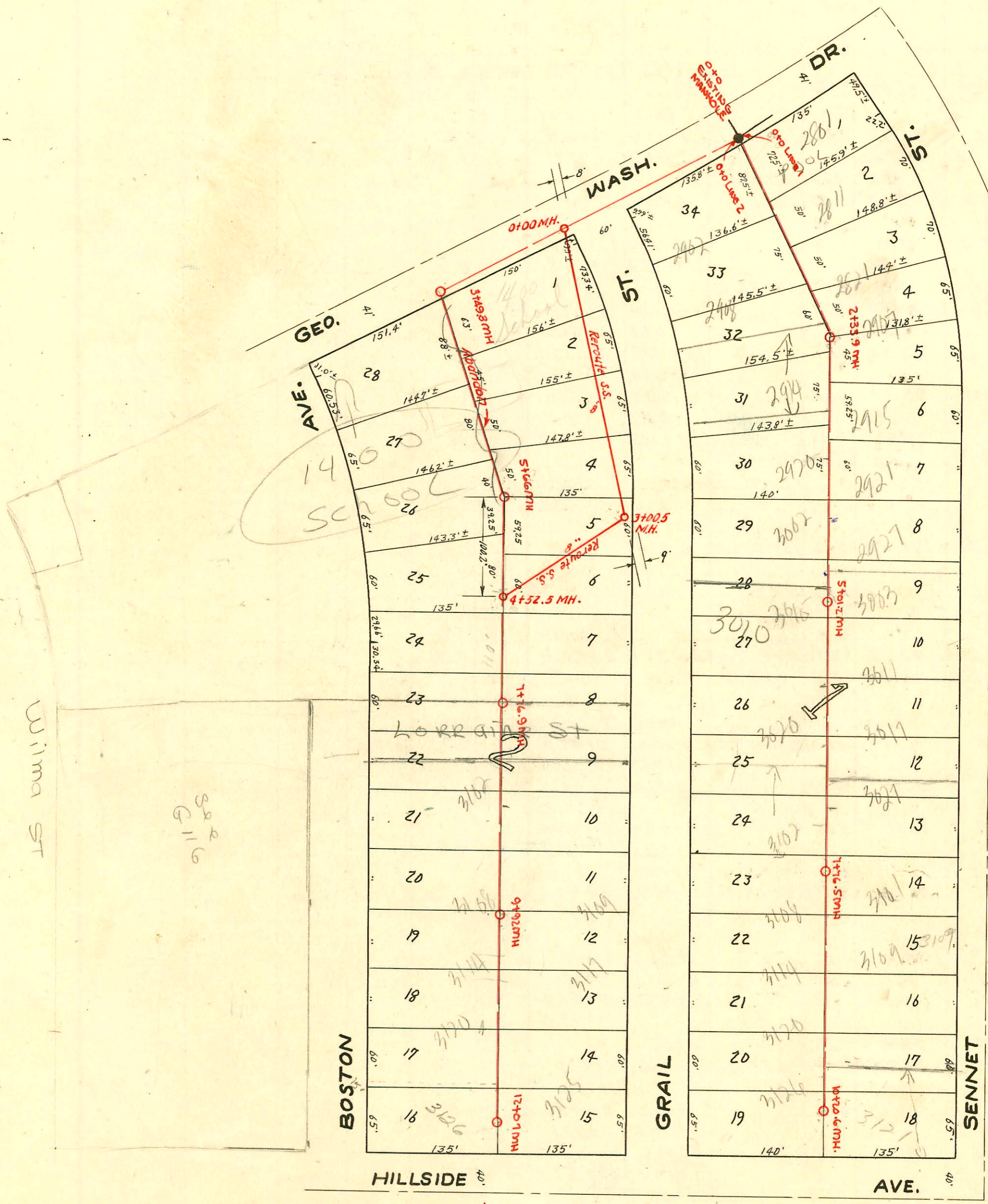


SPRINGER RECORD

CONSTRUCTION RECORD



W.B. CARTER CONST. Co.
 LAT. 4, DIST. 10, SANITARY SEWER No. 12
 Proj. No. C29-22 DATE 1949

CONSTRUCTION RECORD

SERVICE RECORD

STATION	ELEVATION		Depth	MANHOLE	4-INCH "Y" BRANCHES		No. of Permit		House Number		DATE OF PERMITS	
	Ground	Grade			North West	South East	North West	South East	North West	South East	North West	South East
LINE I 4-10-12 0+0		96.96	5.82	EXISTING MH. 0+0	0+50.6 0+84.6	0+53.6	#6930 #3183	2811 R Sennet 2821 Sennet	2902 Grail		3-24-52 11-22-50	11-12-53
1+0		97.06	5.46		0+134 +95.5	1+98.5	#3182	tap #236	3010? Grail 2914 Grail		11-22-50	
2+0		97.16	5.15			2+45.3	#5158	2915 Sennet 2921 Sennet			2-28-52	
2+33.9		97.19 in 97.19 out	5.25 I 5.23 O	2+33.9	2+62.3	2+65.3	#2734 #2735	2927 Sennet 2927 Sennet 3009 Sennet	2920 R Grail 3002 Grail		10-16-50 10-16-50	5-9-53
3+0		97.16	5.04		3+02.7 +55.5	3+58.5	#2734 #2735	4161 Sennet			10-16-50	2-20-53
4+0		97.36	5.71		4+16.8 +65.8	4+19.8 +68.8	#1312 #1311	#5159 Sennet			6-16-50 6-16-50	5-9-53
5+01.2		97.46	5.75	5+01.2	5+24.3 +83.0	4" Sch-40-PVC 5+86.0	#514 #1303	#7198 Sennet	3011 R Sennet 3017 Sennet	3020 Grail	3-21-52 6-15-50	10-21-54 1-24-52
6+0		97.56	5.29		6+47.2	6+50.2	#872	3027 Sennet			5-6-50	
7+0		97.66	5.14		7+11.9 +67.0	7+14.9 +70.0	#3328 #3328	#7199 Sennet	3102 Grail 3108 Grail		2-7-50 2-7-50	1-24-52 3-26-52
7+76.5		97.74	5.17	7+76.5			#553					
8+0		97.76	5.31		8+34.6 +96.8	8+27.0 +99.8	#3330	#5328 Sennet	3109 Grail	3114 Grail	2-16-50	7-25-51
9+0		97.86	5.87		9+56.5	9+61.5	#3331	#4715 Sennet	3117 Grail	3126 Grail	2-16-50	5-23-51
10+0		97.96	6.38		10+17	10+20						
10+20.6		97.99	6.55	10+20.6								
LINE 2 4-10-12 0+0		96.96	6.31	EXISTING MH. 0+0								
1+0		97.06	5.65									
2+0		97.16	5.47									
3+0		97.26	5.61									
3+49.3		97.31 in 97.31 out	5.09 5.19	3+49.3	3+81	3+84	#2741		1400 Geo. Wash. Blvd.			10-1-52
4+0		97.36	5.24		4+27.5 +89.5	4+92.5						
5+0		97.46	5.60		5+42.5	5+45.5						
5+66		97.52 in 97.52 out	5.84 5.65	5+66	5+97.8							
6+0		97.56	5.73		6+56.9	6+59.9						
7+0		97.66	5.54		7+21.3	7+24.3						
7+76.9		97.74	5.41	7+76.9	+82.6	+85.6						
8+0		97.76	5.58		8+18.9 +80.5	8+21.9 +83.5	#946 #2532	3103 Grail	3102 E Boston			5-14-54
9+0		97.86	5.42		9+41.5	9+44.5	#5628	3109 Grail			9-15-52	
9+92		97.95	5.52	9+92	+97.						8-20-51	
10+0		97.96	5.95			10+00						
11+0		98.06	7.44		10+42.6 11+04.7 +69.4	10+45.6 11+07.7 +72.4	#6931 #3766 #3765 B6/68	3125 Grail 3125 Grail	3114 E Boston 3120 E Boston 3126 Boston		1-23-50 1-23-51	11-12-53 5-14-54 10-7-66
12+0		98.16	8.93									
12+07		98.17	9.05	12+07								
Reroute part of Line No. 2 Lat. 4. Dist. 10, S. S. No. 12. Bk. # 32 Profile & Prelim.	0	101.9	97.26	4.6	0+00 New MH.							
	1	102.1	97.34	4.8								
	2	102.1	97.42	4.7								
	3	102.5	97.50	5.0	3+00.5							
	4	103.0	97.58	5.4								
		103.0	97.62	5.4	4+52.5							
					NO WYES m.H. tap				(Greenhouse for School) 1400 Geo. Wash. Dr.			11-1-73

#3329 Tap - 3101 Sennet - 2-16-50 - Jess Hanna
 #3332 Tap - 3125 Sennet - 2-16-50 - Jess Hanna
 #3181 Tap - 2907 Sennet - 11-22-50 - Brodie O'Leary Co.
 #5327 Tap - 3117 Grail - 7-25-51 - Brodie O'Leary Co.
 #6475 Tap - 3114 Grail - 11-16-51 - Brodie O'Leary Co.
 #6476 Tap - 3109 Grail - 11-16-51 - Brodie O'Leary Co.
 #7099 Tap - 2801 Sennet - 1-17-52 - Wichita O'Leary Co. tap 0+56.5 4" sch 40 PVC
 #4735 Tap - 3120 Grail - 5-25-51 - Brodie O'Leary Co.
 #5625 Tap - 2908 Grail - 6-20-53 - Nichell & Nensley
 #6341 Tap - 3108 E. Boston - 9-2-53 - Nichell & Nensley
 #32438 Tap - 1400 George W. Randall - 12-1-64 R. M. Bray
 Vantage School (0+45.6)