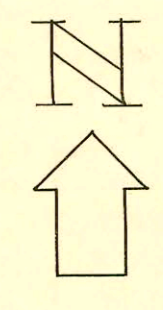
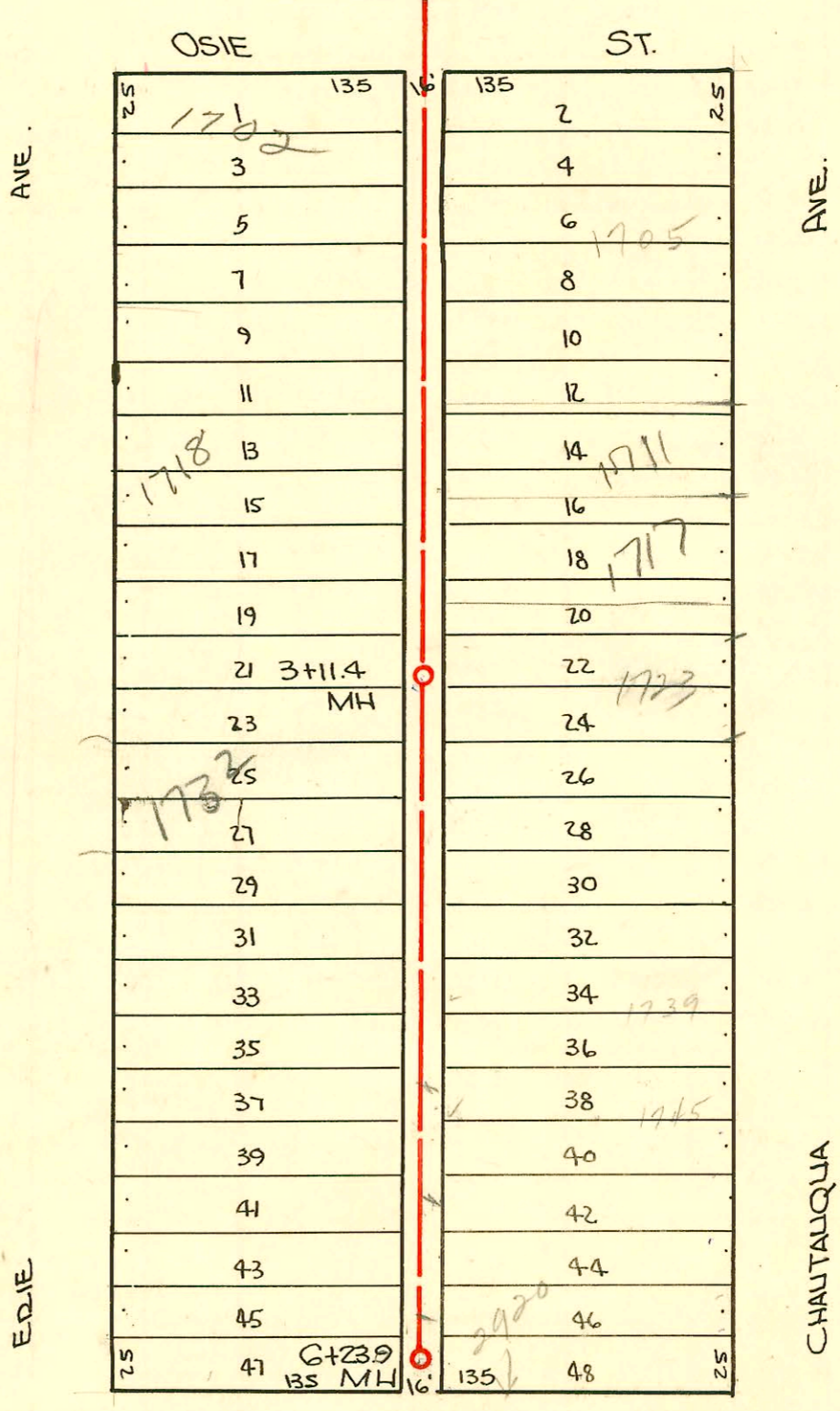


PERMITS RECORD

CONSTRUCTION RECORD

0+0 EXISTING MH



1" = 80'

FUNSTON ST.

CHAUTEAUQUIE AVE.

LAT. 4, SUBMAIN W, S.S.# 12
 W.B. Carter Const. Co.
 Date 12-1949 Proj. No. C29-41

CONSTRUCTION RECORD						SERVICE RECORD						
STATION	ELEVATION		Depth	MANHOLE	4-INCH "Y" BRANCHES		No. of Permit		House Number		DATE OF PERMITS	
	Ground	Grade			West	East	North West	South East	North West	South East	North West	South East
0+0	104.0	94.57	9.63	0+0 EXIST. MH.	0+44.0	0+47.0	#2858		17025 S Eric		4-17-85 12-19-49	
1+0	106.5	94.67	12.78		1+08.4	1+08.4	#2861	#162	17085 S Eric	17054 S Chautaugus	12-19-49	3-20-50
					+57.6	+59.6	#2862	#162	17125 S Eric	17079 S Chautaugus	12-19-49	3-20-50
2+0	107.5	94.77	13.65		2+03.6	4" sch 40 2+06.6	#2863	#164	17188 S Eric	17114 S Chautaugus	2-22-83 12-19-49	3-13-95 3-20-50
					+55.7	+58.7	#2864	#165	17225 S Eric	17079 S Chautaugus	12-19-49	3-20-50
3+0	106.7	94.87	12.88		3+02.0	3+05.0	#2865	#166	17288 S Eric	1723 S Chautaugus	12-19-49	7-18-50
3+11.4	106.7	94.88	12.62	3+11.4	4" sch 40 PVC +54.3	3+57.3	#2866	#166	1732 S Eric	1729 S Chautaugus	1-6-03 12-19-49	7-18-50
4+0	106.1	94.97	11.78		4+06.0	4+09.0	#2867	#2820	17385 S Eric	1735 S Chautaugus	12-19-49	10-21-50
					+55.0	+58.0	#2868	#2821	1742 S Eric	1737 S Chautaugus	12-19-49	10-21-50
5+0	106.1	95.07	11.75		5+04.3	5+07.3	#2869		1745 S Eric		12-19-49	
					+53.6	+56.6	#2870	13514	1752 S Eric	2920 E Junston	12-19-49	10-28-60
6+0	106.0	95.17	11.57		6+05.7	6+08.7	#2871		1752 S Eric		12-19-49	
6+23.8	105.8	95.19	11.44	6+23.8								

2001-00384-2/21/01-1718 S Eric Ave-Reddi-4" sch 40 install 1TWINCO, 2 Fernco to clay

2003-00085-1/6/03-1732 S Eric-Wichita EXC-4" PVC, 1TWINCO, 2H45, 2H22, 1V45, 1V22, shallow-43.5

of MH 3+11.4 (3+54.4) Replace exist svc line
C 36639-1705 S. Chautaugus - 1-5-73 - Joe Spaulding (0+97)

#161 - Tap - 1701 S. Chautaugus - 3-20-50 - Wichita Pkly Co.
#4780 - Tap - 1745 S. Chautaugus - 5-29-51 - La Joy Pkly Co.
#3863 - Tap - 2920 E. Junston - 1-26-53 - Jack Durham