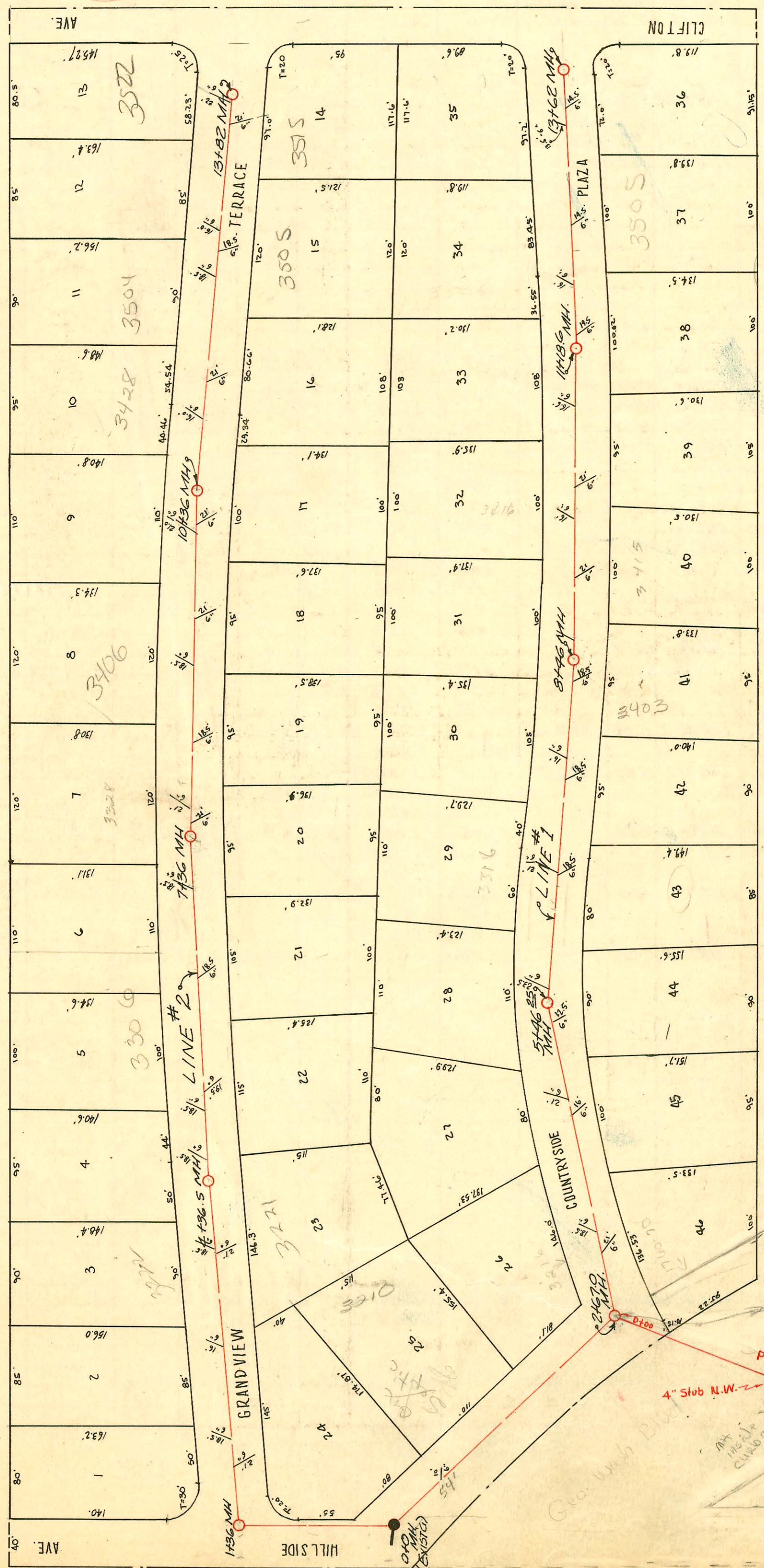


6" leads - trap area at curb line -
 end of lead - city does not maintain
 6" leads - per Owner



LAT. 2, SUBMAIN W, SS # 12
 MARTIN K. EBY CONST. CO.
 1949
 PROJ. NO. C29-17

ERIC

PRIVATE LINE - NO CITY
 MAINT FROM 0100 MH
 TO ST. 2702
 3-4-94
 PER ROY GRIFIN

PRIVATE SEWER
 4" STUB N.W. -
 EOP 11.50'

SAFeway STORE
 1818 S. Hillside

CONSTRUCTION RECORD

SERVICE RECORD

* LINE 1

* LINE 2

STATION	ELEVATION		Depth	MANHOLE	4" INCH "Y" BRANCHES		No. of Permit		House Number		DATE OF PERMITS	
	Ground	Grade			North West	South East	North West	South East	North West	South East	North West	South East
0+0	111.6	101.21	10.73	0+0 (EXIST MH)				6196	3210 Countryside			7-21-52
1+0	111.4	101.46	10.14									
2+0	110.5	101.66	9.08									
2+67	109.0	101.79	7.37 m 7.30 m	2+67								
3+0	109.0	101.86	7.36					#3174	1806 Geo. Washington			1-30-50
					3+42.2			#3175	3216 Countryside			1-30-50
4+0	110.1	102.06	8.33		4+60.6	4+45.2		#3176	3218 Countryside			1-30-50
5+0	110.9	102.26	8.75			5+28.7		#3214	3305 Countryside			2-6-50
5+46.25	102.6	102.35	10.49	5+46.25	5+59			#3213	3306 Countryside			2-6-50
6+0	112.5	103.37	9.33		6+60.7	6+57.7		#3177	3316 Countryside	3313		1-30-50
7+0	114.6	104.10	10.77		7+53.7	7+41		#1059	3328 Countryside	3321		5-17-50
8+0	117.7	104.82	13.06			8+26		#4533	3403 Countryside			11-10-50
8+46	118.0	112.00 (m) 105.16 (m)	7.21 14.05	8+46	8+63.7			#4982	3404 Countryside			3-19-53
9+0	120.7	112.39	8.59		9+69	9+55		15032	3415 Countryside	3415		6-14-51
						9+95		#403	3416 Countryside	3416		12-14-61
10+0	124.7	113.11	11.79		10+66			#3178	3426 Countryside			9-24-51
11+0	128.3	113.83 113.96 (m)	14.49 14.68					#1144	3506 Countryside	3435 Countryside		1-30-50
11+18	128.4	117.00 (foot)	11.44	11+18	11+74.5	11+29		#1176	3505 Countryside			5-24-50
12+0	129.0	117.58	11.62			12+05		#1145	3515 Countryside			5-31-50
13+0	129.1	118.30	11.03		13+10	13+27.5						5-24-50
13+62	129.8	118.75	11.23	13+62								
0+0	110.6	101.26	9.61	0+0 (EXIST MH)								
1+0	113.2	101.48	12.03									
1+36	112.4	101.56	11.07	1+36		1+89		#3671	3202 Grandview			2-28-55
2+0	112.7	101.70	11.24		2+119			#3170	3204 Grandview			1-30-50
					2+92.6			#3327	3217 Grandview			4-11-50
3+0	113.1	101.92	11.41		3+78.3	3+73.3		#2125	3222 Grandview	3221 Grandview		8-28-50
4+0	114.24	102.14	12.10					#582	3222 Grandview			4-12-54
4+36.5	114.9	105.00 102.22	10.12 12.90	4+36.5	4+55.2			#2213	3230 Grandview			8-18-52
					4+98.2			#3171	3306 Grandview			1-30-50
5+0	117.2	106.26	11.16			5+15.7		#3175	3235 Grandview			2-2-50
6+0	120.9	108.26	12.85		6+93.5	6+15.8		#3818	3318 Grandview	3305 Grandview		2-7-51
7+0	124.3	110.26 115.00	14.29 10.46					#709	3328 Grandview	3315 Grandview		9-30-50
7+36	125.2	110.98 104.48	14.48 14.48	7+36	7+60.7	7+47.0		#3172	3416 Grandview	3325 Grandview		4-21-50
8+0	126.3	115.77	10.73		8+86.3	8+16.7		#3172	3416 Grandview	3325 Grandview		1-16-50
9+0	127.8	116.97	11.04			9+25		#3173	3415 Grandview	3405 Grandview		1-30-50
10+0	129.8	118.17	11.88		10+01.7	10+07.4		#710	3415 Grandview	3415 Grandview		12-21-50
10+36	130.5	118.60	12.12	10+36	10+99.2			#711	3428 Grandview	3415 Grandview		4-24-50
11+0	131.6	119.37	12.47			11+31.5		#3483	3425 Grandview			2-28-50
12+0	133.5	120.57	13.16		12+23	12+45		#3230	3501 Grandview	3505 Grandview		4-14-50
					12+73			#287	3505 Grandview			4-3-50
13+0	135.3	121.77	13.76		13+75	4" SCH 40 13+56		#1416	2000-02106 Grandview	3527 Grandview		7-14-50
13+82	136.8	122.75	14.02	13+82					3515 Grandview			7-25-00

2000-02106-3515 Grandview-9/25/00-Semple + Son-4" SCH 40-1 6x4 Fernco Clay at street curb Aprx 15' from main

Blk # M-5

PRIVATE S.S. FOR SAFEWAY BLDG. - GEO. WASH BLVD. & HILLSIDE

0+00	101.99											
1+00	102.39											
1+50.3	102.59			1+50.3	4" Stub N.W.		#4374	1760 Hillsdale				4-16-51
2+00	102.79											
3+00												
3+02	103.01				4" SCH 40 PVC End of Line		94201957	1818 Hillsdale				12-17-94

#16084 top-pain-his 1810 S. Hillside - Remedy Bldg. 8-30-62 (1+64.3)

#1044 11641 1518 S. Hillside At Henning (510 in MH on Geo Wash Blvd)