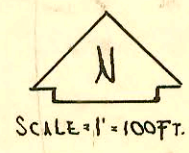
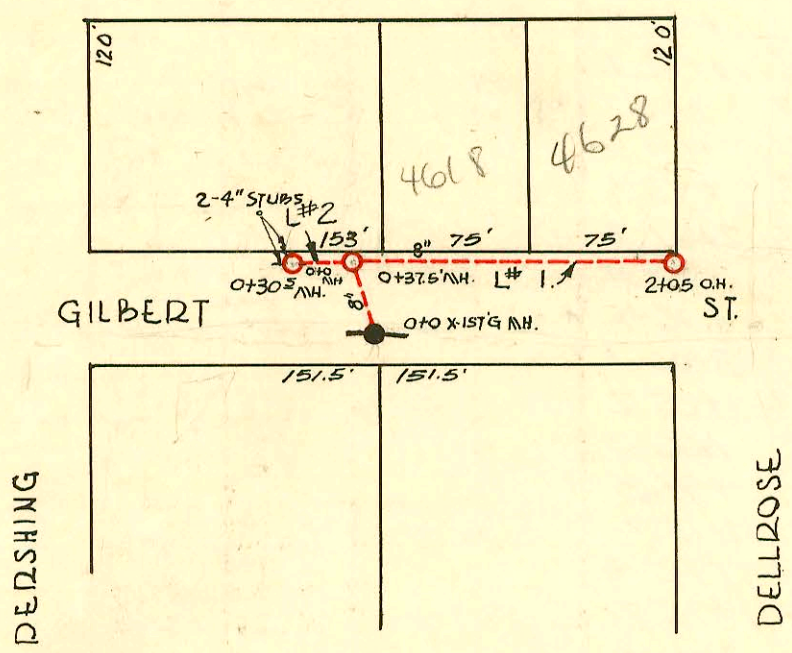
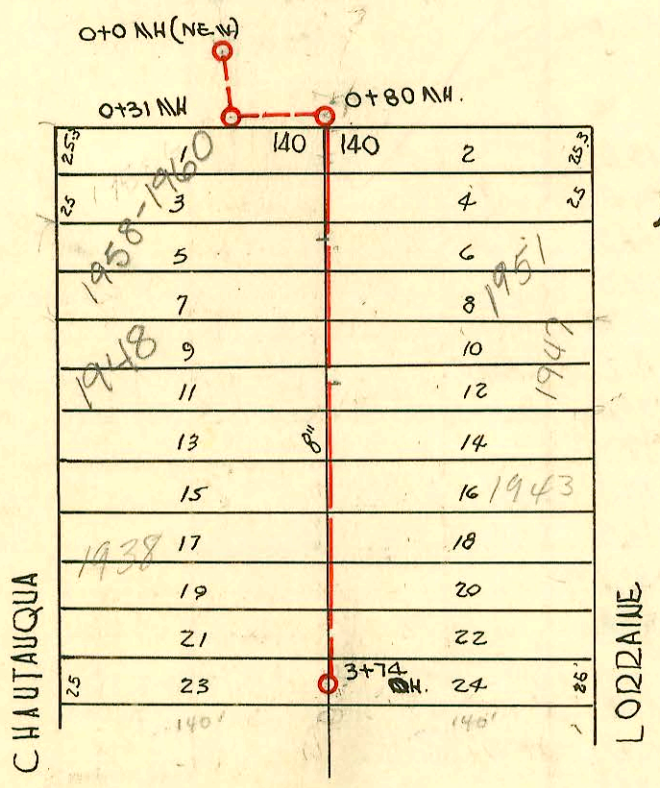


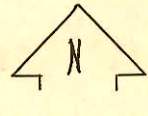
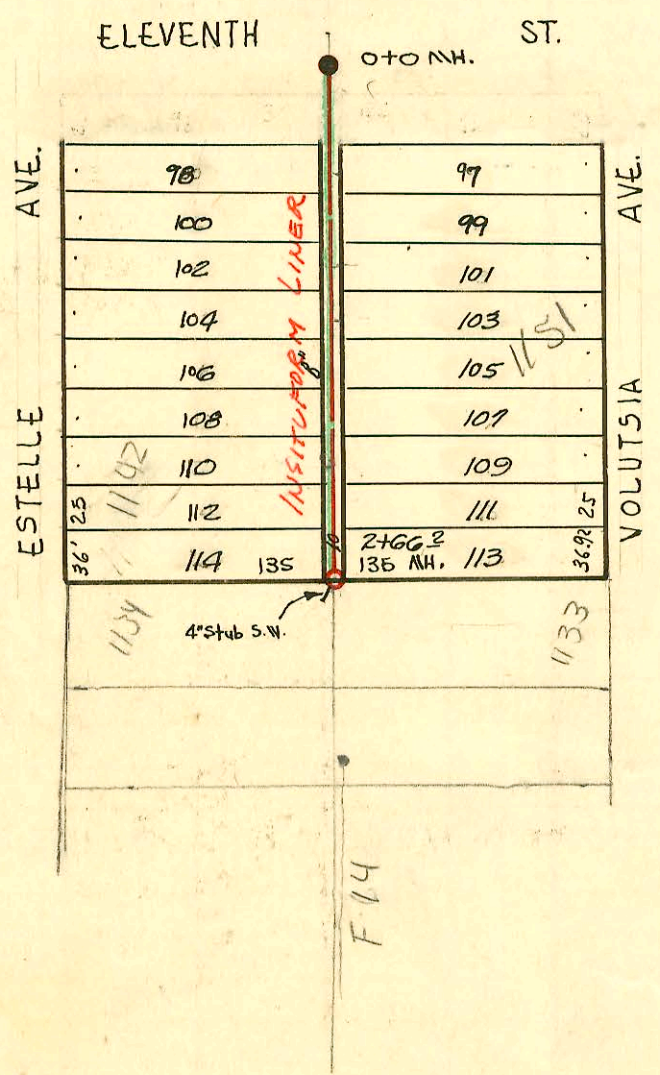
SERVICE RECORD CONSTRUCTION RECORD



LAT. 42, D.C.S., SS# 12  
 W.B. CARTER CONST. CO.  
 1-21-50



LAT. 11, DIST. E, SS# 12  
 W. B. CARTER CONST. CO.  
 1-21-50  
 1=100



LAT. 12, DIST. E, SS# 12  
 W. B. CARTER CONST. CO.  
 2-4-50

1991 SAN. SEW. RECONSTRUCTION  
 PROGRAM PART III  
 Built by INSITUFORM PLAINS

CONSTRUCTION RECORD

SERVICE RECORD

STATION	ELEVATION		Depth	MANHOLE	4-INCH "Y" BRANCHES		No. of Permit		House Number		DATE OF PERMITS	
	Ground	Grade			North West	South East	North West	South East	North West	South East	North West	South East
LINE #1 42-DCS-12	0+0	164.7	152.92	12.93	0+0 EXIST'G	4" SCH 40		2052533 21	4606 E A	see below	2-5-02	
	0+37.5	164.7	153.15	12.28	0+37.5	0+50 +74 +95		#3169	Millent		1-30-50	
	1+0							#458	1638 E		1-25-50	
	2+0											
	2+05	163.3	154.02	9.80	2+05 O.H.							
LINE #2	0+0	164.7	153.36	11.70	0+0=0+31.5							
	0+30.5	165.0	153.48	12.07	0+30.5 -2-4" STUB	1- West		#652	646 S. Pershing		11-29-51	
						WEST EAST						
11-E-12	0+0	171.0	157.24	13.91	0+0 NEW NH. (Removed Existing O.H.)							
	0+31	172.0	157.56	14.65	0+31			#21988	1958-60 N Chataugua	see below	8/13/01	
	0+80	173.0	158.42	14.58	0+80	+96	+93	#2136			8-17-52	
	1+0	173.0	158.96	14.07								
						WEST EAST						
						+73	+70	#17907	1952-54 R	1957 N Lorraine	5-31-55	
						+73	+70	#4938	1952-54 R	1957 N Lorraine	5-31-55	
						+97	+94	#7289	1948 N Chataugua		1-28-52	
	2+0	174.6	160.36	14.48								
						2+24	2+21	#4936	1944 N Chataugua	1943 N Lorraine	6-19-53	
						+49	+46	#5598				
						+72	+69	#4935				
						+96	+93					
	3+0	173.3	161.74	12.79								
						3+24	3+21	#2101	1932 N Chataugua		8-24-50	
						+48	+45	#1236	1932 N Chataugua		7-8-50	
						+72	+69					
	3+74	175.6	162.8	12.95	3+74 O.H.							
12-E-12	0+0	128.0	118.71	9.40	0+00	WEST EAST						
						0+67.6	0+58.6	#5319	1157 N Wichita		7-24-51	
							+82.6					
	1+0	128.0	118.81	9.26		1+08	1+05	#3212	1152 N Lorraine	1151 N Lorraine	2-6-50	7-31-52
						1+57.8	1+33.6	#5211	1152 N Lorraine		2-6-50	
							+71.0					
	2+0	127.5	118.91	8.86		2+06.2	+12.0	#3210	1142 N Lorraine		2-6-50	
						+39.2	2+36.2	#3733	1139 N Lorraine		1-5-61	
								#4159	1134 N Lorraine		7-10-52	
	2+66.2	128.1	118.98	9.38	2+66.2	4" Stub S.W.					3-22-51	

2002-00321 - 21502 - 4606 E Gilbert - Redde - 4" SCH 40 Paved Saddle 12' E of MH 0+37.5 (0+49.5) 1H45, 1V45, 17WINCO

2001-01988 - 811301 - 1958-60 N Chataugua - WB Carter - 4" SCH 40 17WINCO 15' S of MH 0+80 (0+65)

#3439 - 2nd - 4618 E. Millent - 2-23-50 - Curtis, Polk Co. #6263 - 7th - 145 N. Wichita - 9-6-55 - McDonald, Polk Co.  
 #91988 - Cap - 1133 N. Lorraine - 8-29-51 - 2nd  
 #4934 - 6th - 1937 N Lorraine - 5-31-55 - Window Poly.