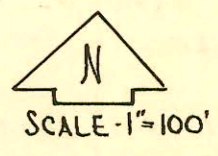
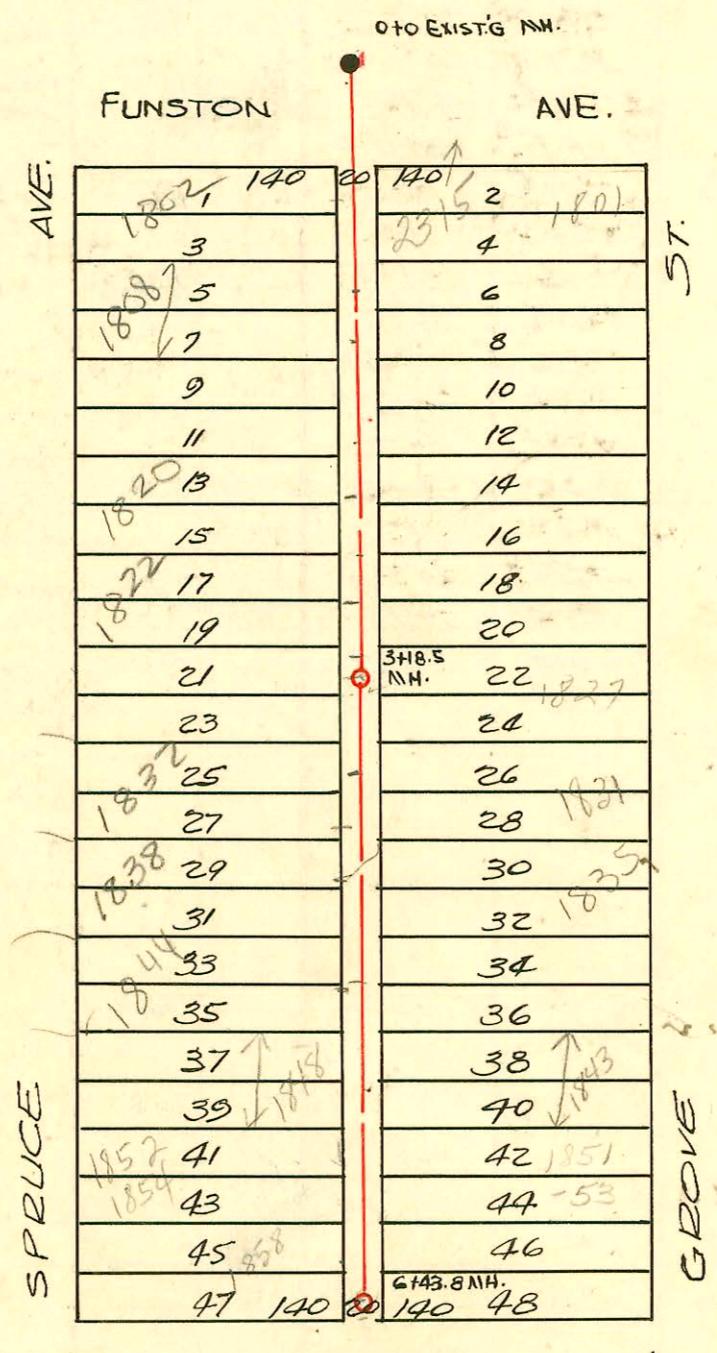
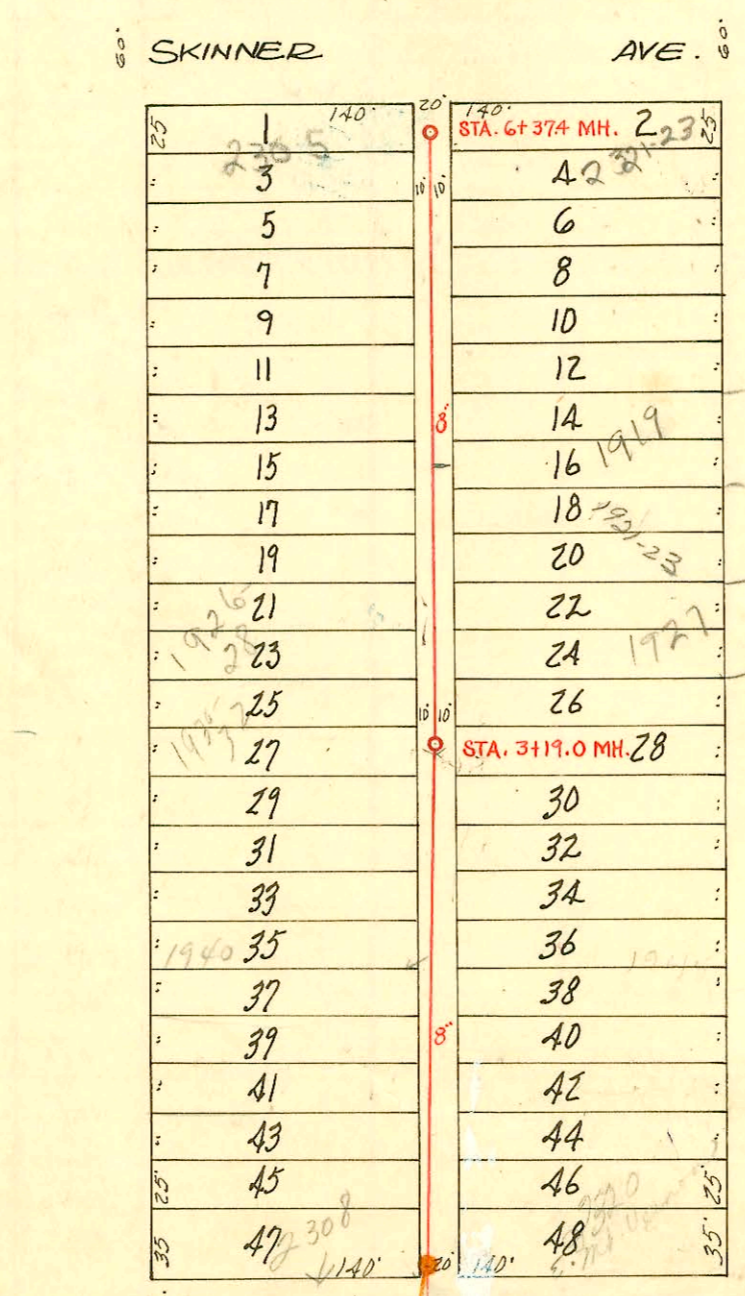


CONSTRUCTION RECORD SERVICE RECORD



SCALE - 1" = 100'

W.B. CARTER CONST. CO
LAT. 9, DIST. AS, SS#12
1950



LAT. 17, DIST. AS, S.S.#12
W. B. CARTER 1951
PROJ. NO. C21-23
BOOK # M-17
6-18-51

0+00 Existing MH. on Existing 8" Sanitary Sewer Flowing east.

mt Vernon

CONSTRUCTION RECORD

SERVICE RECORD

STATION	ELEVATION		Depth	MANHOLE	4-INCH "Y" BRANCHES		No. of Permit		House Number		DATE OF PERMITS	
	Ground	Grade			North West	South East	North West	South East	North West	South East	North West	South East
0+0	98.7	91.38	7.56	EXIST'G MH. 0+0	0+71.9 +95.9	0+68.9 +92.9	#827		1802 S Spruce		4-7-52	
1+0	99.3	91.50	8.05		1+26.2 1+44.7 +72.6 +96.9	1+23.2 +41.7 +69.6 +93.9	#51937 #31-29549-7 #2901		1808 S Spruce		4-12-95 3-10-51 10-30-50	
2+0	99.5	91.60	8.12		2+24.2 +55.3	2+21.2 +52.3	#2087		1817 S Spruce			8-24-50
3+0	98.7	91.70	7.22		3+08.1	3+05.1	#29 #5450	#3295	1821 S Spruce		3-3-50	2-14-50
3+18.5	98.7	91.72	7.21	3+18.5	3+28.2 +69.3 +94.3	3+25.2 +66.3 +91.3	#499 #2002-00181	#2347 #277	1827 S Spruce		8-6-51	1-9-89 4-12-50
4+0	99.3	91.80	7.69		4+08.2 +45.4	4+15.2 +42.4	#1700	#501	1838 S Spruce		1-18-02 8-9-54	10-2-91 3-20-52
5+0	98.9	91.90	7.09		5+11.2 +38.2 +67.6 +96.0	5+08.2 +35.2 +64.6 +93.0	#3727 #1801 #112	#1600	1848 S Spruce		9-1-51 10-31-95 3-22-51	6-12-52
6+0	98.9	92.00	6.99		6+17.2	6+14.2	#1694	C21122	1852 S Spruce		7-24-64	9-25-76
6+45.8	98.7	92.04	6.90	6+45.8	+31.7	+28.7	C44521 #2256	#3355	1855 S Spruce		4-17-74 11-17-51	2-18-50
0+00	98.6	91.98	6.6	0+00 EXIST'G MH.	0+56.0 +90.0	0+53.0 +87.0	15409		2308 S Spruce		4-3-62	
1+00	99.0	92.08	6.9		1+16.0 +43.7 +66.5 +89.5	1+13.0 +40.7 +63.5 +86.5						
2+00	98.3	92.18	6.2		2+14.2 +41.6 +70.0	2+11.2 +38.6 +67.0		#4511	1940 S Spruce		3-19-53	
3+00	98.4	92.28	6.1		3+17.8	3+14.8	#9847 #6936	#16420	1931 S Spruce		3-19-53	6-5-86
3+19.0	98.3	92.30 in 92.40 out	5.9	3+19.0	+42.7	+39.7						
4+00	98.2	92.48	5.7		4+15.0 +41.9 +67.0 +91.8	4+12.0 +38.9 +64.0 +88.8	#2603 #5506 #23480 #3254		1926 S Spruce		11-18-92	11-15-54 8-10-51 8-7-79 11-17-52
5+00	98.3	92.58	5.7		5+15.7 +40.1 +64.4 +92.0	5+12.7 +37.1 +61.4 +89.0	#3292	#2095 #5162 #5996	1915 S Spruce		9-20-51	9-20-54 10-1-51
6+00	98.4	92.68	5.7		6+17.0	6+14.0	#2339		2321 S Spruce		10-22-54	
6+37.4	98.2	92.71	5.5	6+37.4								

LAT. 17, DIST. AS, #12

2002-01597-6-6-02-1832 S Spruce - The Waldinger Corp - 4" PVC - 17W10 CO
2002-00181-1-18-02-18385 Spruce - Wichita Exc - 4" PVC 40 - TWIN CO, 2 v 45, Tied to wye w/donut

96-12947-7 8896 1822 S Spruce - Board Map?
95-5193-7 4-13-95 1808 S Spruce - Conn at Sta. 1+18.0
95-13848-7 9-6-95 1930-32 S Spruce (New Duplex) - Tied to Clay 6' off Main at wye Sta 3+17.8

#161-2nd - 1801 S. Grove - 2-11-50 - Guy Magruder. #5999-top - 1828 S. Spruce - K. K. Day 8-12-50
#1252-2nd - 1946 S. Spruce - 5-13-52 - Harry Mann (H56.4) #567 v 2320 Ent. Vernon - Federick - 8-11-57
C 45973-#4468-top - 1921 S. Grove - 3-17-53 - James M. Co - 7-30-74 - all (4+12)
#6739-2nd at 4+25 - 1924 S. Spruce - 10-21-53 - C. G. Coleman
96-4247-#5542-2nd (2305 S. Spruce) 6-13-53, J. A. Smith (S/O - 11/100 G.P. Plumb.)
-460 Top 1936 S Spruce 4-9-56 - Randall P. By.
AB-281-top - 2315 S Spruce - K. K. Day - 10-22-53 (0+80)