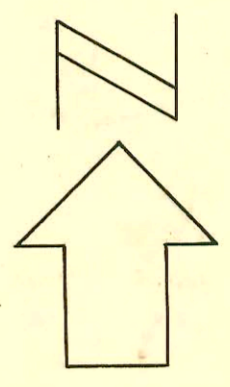
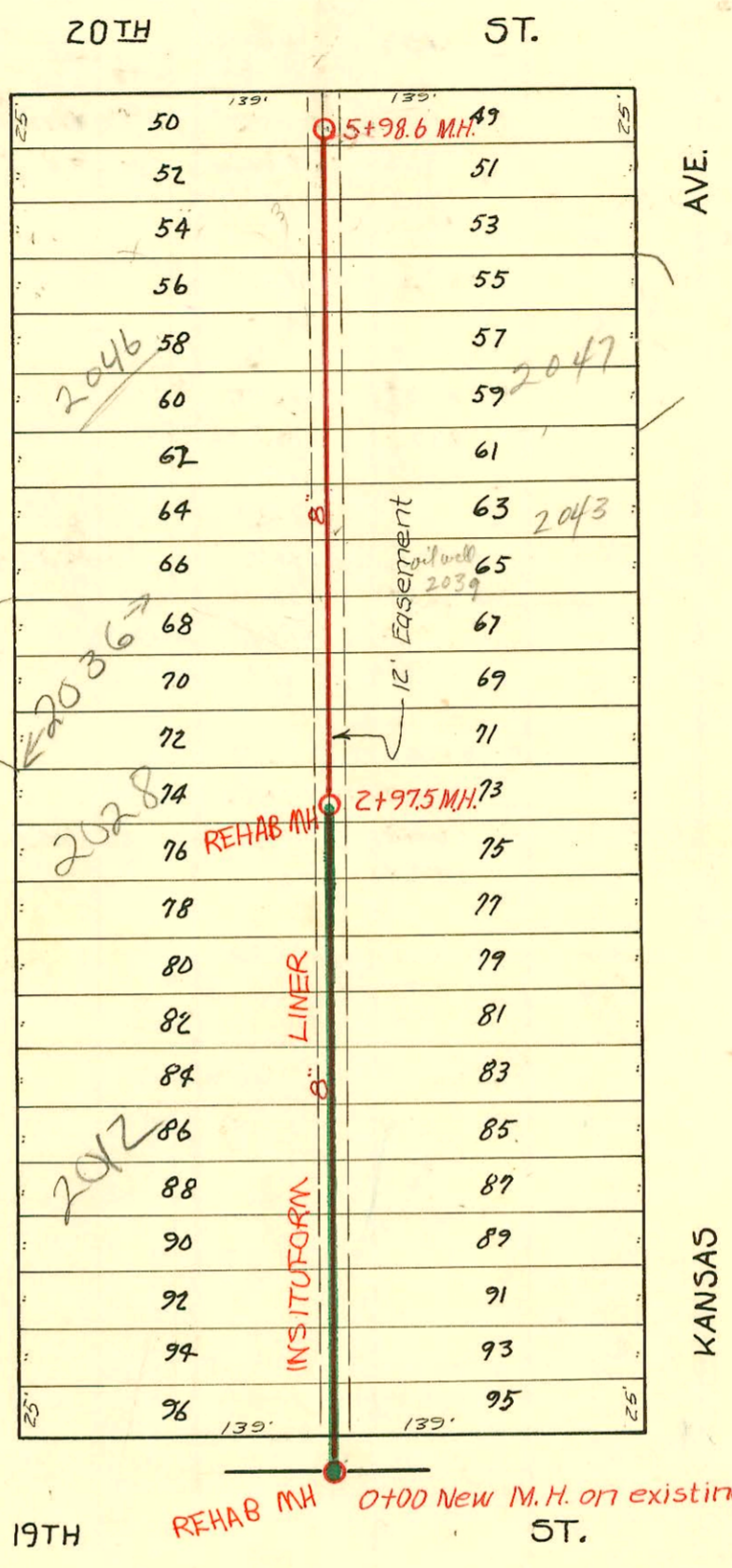


CONSTRUCTION RECORD



Scale 1"=80'

1992 SANITARY SEWER REHABILITATION PROGRAM - PHASE III
 PROJ. NO. 468-82220 (631879)
 BUILT BY INSITUFORM PLAINS, INC.
 BOOKED 8-25-93 FROM AS BUILTS

19TH ST. REHAB MH 0+00 New M.H. on existing 12" line

RECONNECTIONS

STATION	ADDRESS	DIRECTION
2+85.5	2027 N. Kansas	East
2002-02028 2+76.5	2028 N. Hydraulic R	West
2+34	2021 N. Kansas	East
2+19	2022 N. Hydraulic	West
1+93.4	2018 N. Hydraulic	West
1+88.3	2017 N. Kansas	East
2002-01174 1+35.6	2012 N. Hydraulic B	West
1+31.2	2011 N. Kansas	East
2000-01368 0+92.2	2007 N. Kansas	East
0+25.0	2001 N. Kansas	East
0+27.9	2001 N. Kansas	East

2/23/02 Padgett ex - Predco Saddle 19.5'S MH 2+97.5 (2+78) 4" 40 PVC, 3V4S, TWIN CO

4-24-02 Morris Ditching - Predco Saddle 136.6' N of MH 0+00 (1+36.6) 4" 40 PVC - 1/4" Fall - 1V4S -

6/6/00 Roto - 1TWIN CO

Lat. 19, Dist. T, SS, # 12
 City of Wichita, Kansas
 L. K. White City Engineer
 W. B. Carter 1950
 Project No. C-20-3

Book #46

CONSTRUCTION RECORD						SERVICE RECORD						
STATION	ELEVATION		Depth	MANHOLE	4-INCH "Y" BRANCHES		No. of Permit		House Number		DATE OF PERMITS	
	Ground	Grade			North West	South East	North West	South East	North West	South East	North West	South East
0+00	123.0	115.25	8.01	New M.H. 0+00								
1+00	123.2	115.35	8.10		0+29.1 0+25.0 0+26.1 0+90		93-289822 #134 2006-1 #135		See Reconnect Record next page 200171 R 200711 Kansas		see 11-12-93 3-16-50 6-6-50 3-16-50	
2+00	121.9	115.45	6.65		1+17.6 1+29.6 +88.1		#136 #137		201711 201771 Kansas		3-16-50 3-16-50	
2+97.5 3+00	121.5	115.55	6.19	2+97.5	2+09.6 +18.4 2+34.2 +86.6		#3170 #138 #139		2022 N. Hydraulic 202171 202771 Kansas		11-21-50 3-16-50 3-16-50	
4+00	121.6	115.65	6.16		3+07.7 3+29 +50.5 +68.5 +73.3		+189 #3683		2036 N. Hydraulic 2038 N. Hydraulic		4-28-50 2-28-55	
5+00	120.8	115.75	5.28		4+14.5 4+39.6 +60.3 +88.3		#15560 #20060187 2091		2043 N. Kansas 2047 N. Kansas		8-22-69 8-7-52	
5+98.6	121.0	115.85	5.36	5+98.6	5+10.0 +40.0 +62.3 +90.2		#3963 #6352 #3637		2052 N. Hydraulic 2058 N. Hydraulic 2059 N. Kansas		3-23-55 2-16-59 10-31-51 12-31-52	

2996 - Top - 2028 N. Hydraulic - 11-6-50 - Jres Pllg. Co
 # 5586 - Top - 2018 N. Hydraulic - 8-15-51 - Eugene Reynolds
 # 5610 - Top - 2012 N. Hydraulic - 8-16-51 - Eugene Reynolds
 # 2656 - Top - 2046 N. Hydraulic - 11-19-54 - Joe M.S. Donald
 19480 - 2004-08 N. Hydraulic - 11-2-87 - Al Henning - (0+29.1)
 5.0"