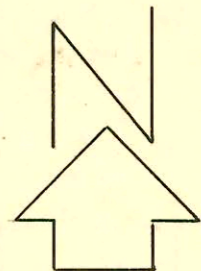
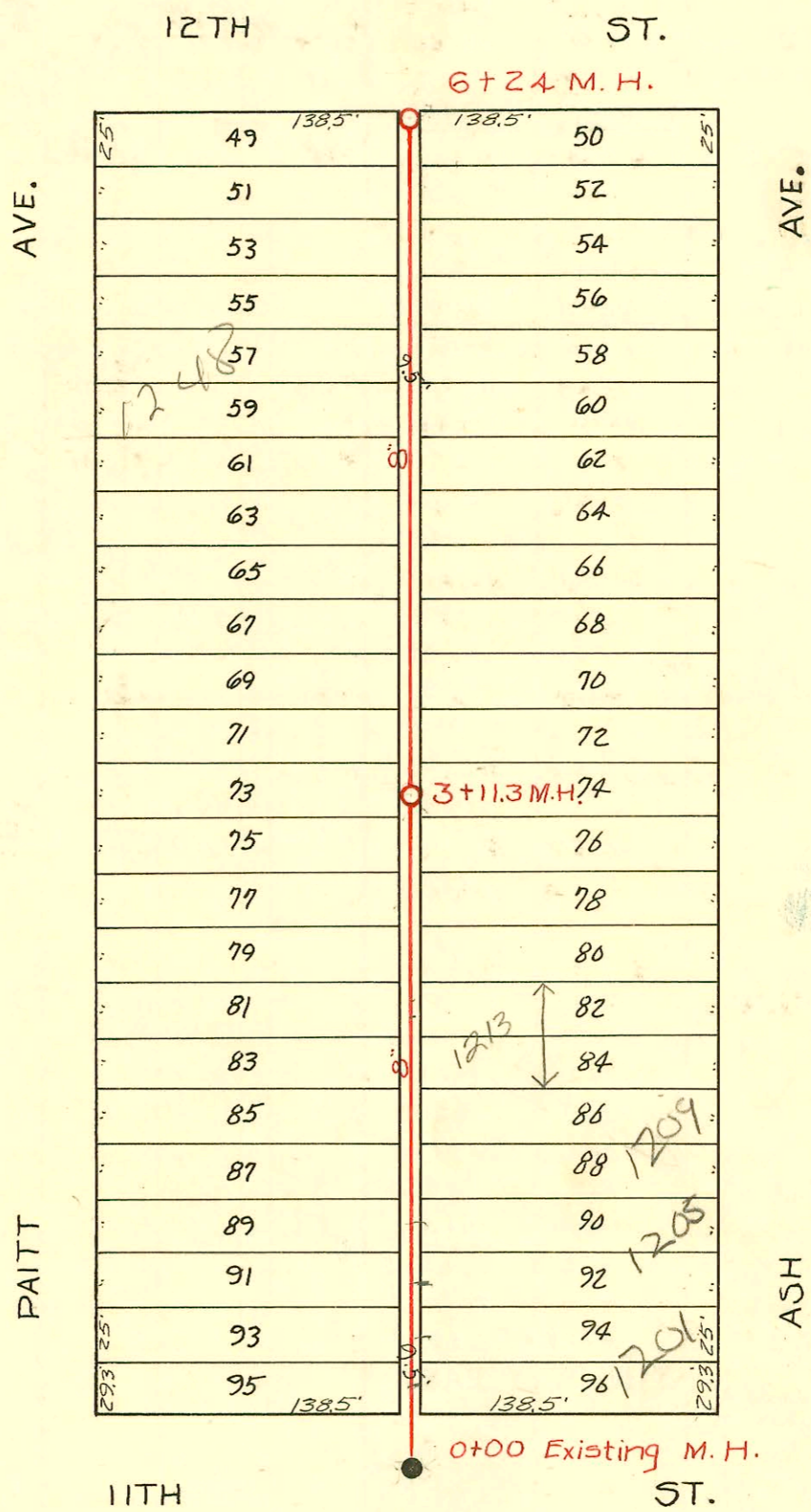


STREET RECORD

CONSTRUCTION RECORD



Scale 1"=80'

Lat. 13, Dist. E. S.S.#12
 City of Wichita, Kansas
 L. K. White City Engineer
 W. B. Carter 1950
 Project No. C-20-1

Book # M5

CONSTRUCTION RECORD						SERVICE RECORD						
STATION	ELEVATION		Depth	MANHOLE	4-INCH "Y" BRANCHES		No. of Permit		House Number		DATE OF PERMITS	
	Ground	Grade			North West	South East	North West	South East	North West	South East	North West	South East
0+00	115.7	108.72	7.25	0+00 Exist. M.H.	Piatt	Asch						
	.8	.22			0+35.1	0+32.1	#3799		1203		7-29-51	
	116.0	.82			+60.6	+57.6	#7066		Piatt		1-15-52	
	.1	.87			+88.5	+85.5	#1636		1206		6-14-52	
1+00	116.3	108.92	7.65									
	.3	.97			1+15.5	1+12.5						
	.2	109.02			+43.6	+40.6	#4028	C302-38	1208	Sealo	1-28-72	
	.1	.09			+65.3	+62.3	#5197	5197	Piatt	1211	2-5-53	5-13-53
2+00	116.1	109.12	7.25									
	.1	.17			2+17.7	2+14.7	#497	2003-02617	1220	1209 N/C	3-20-52	9-24-02
	.1	.22			+41.6	+38.6		94-14377-7	Piatt	1213	9-10-94	
	.2	.27			+91.9	+88.9						
3+00	116.2	109.32	7.15									
	116.0	.33										
3+11.3	115.9	109.34	6.76	3+11.3								
	.1	.39			3+15.7		#277		1222-23		3-21-56	
	.3	.41			+40.7	3+37.7			Piatt			
	.6	.44			+65	+62	#882	#6027	1232-77	1235 N	7-2-54	
	.8	.49			+93.3	+90.3			Piatt	Asch		
4+00	117.0	109.52	7.75									
	116.8	.56			4+13.7	4+10.7						
	.7	.60			4+41.1	+38.1	#1993	#5563	1242	1239	9-13-59	7-12-55
	.6	.67				+60.1	06-01079				5-8-06	
	.4	.68			4+90.6	+87.6	#398		1248	510	4-10-50	
5+00	116.3	109.72	6.82									
	.76	.80			5+14.7	5+11.7						
	.80	.84			+40.0	+37.0	#2423	C7839	1252-71	1255 N	9-21-50	7/6/67
	.84	.88			+64.3	5+61.3		2869	Piatt	Asch		3-18-81
	.88				+89.3	+86.3						
6+00	116.3	109.92	6.61									
	.4	.95			6+17.0	6+14.0						
6+24.0	116.4	109.96	6.67	6+24.0								

N/C SWR200.1-03094 12/5/01 1201 N Ash - Cummings & Fitzsimmons - 4" sch 40 PVC - Predco 44' N of MHO 000 (0+41) 1/4" fall

N/C SWR200.1-03095 12/15/01 1205 N Ash - Cummings & Fitzsimmons - 4" sch 40 PVC - Predco Saddle 121' N of MHO 000 (1+21) 1/4" fall

#5387 - Dup - 1217 N. Ash - 7-20-51 - Joe Mc Donald
 #2575 - Dup - 1215 N. Ash - 9-17-52 - Gray Bros.