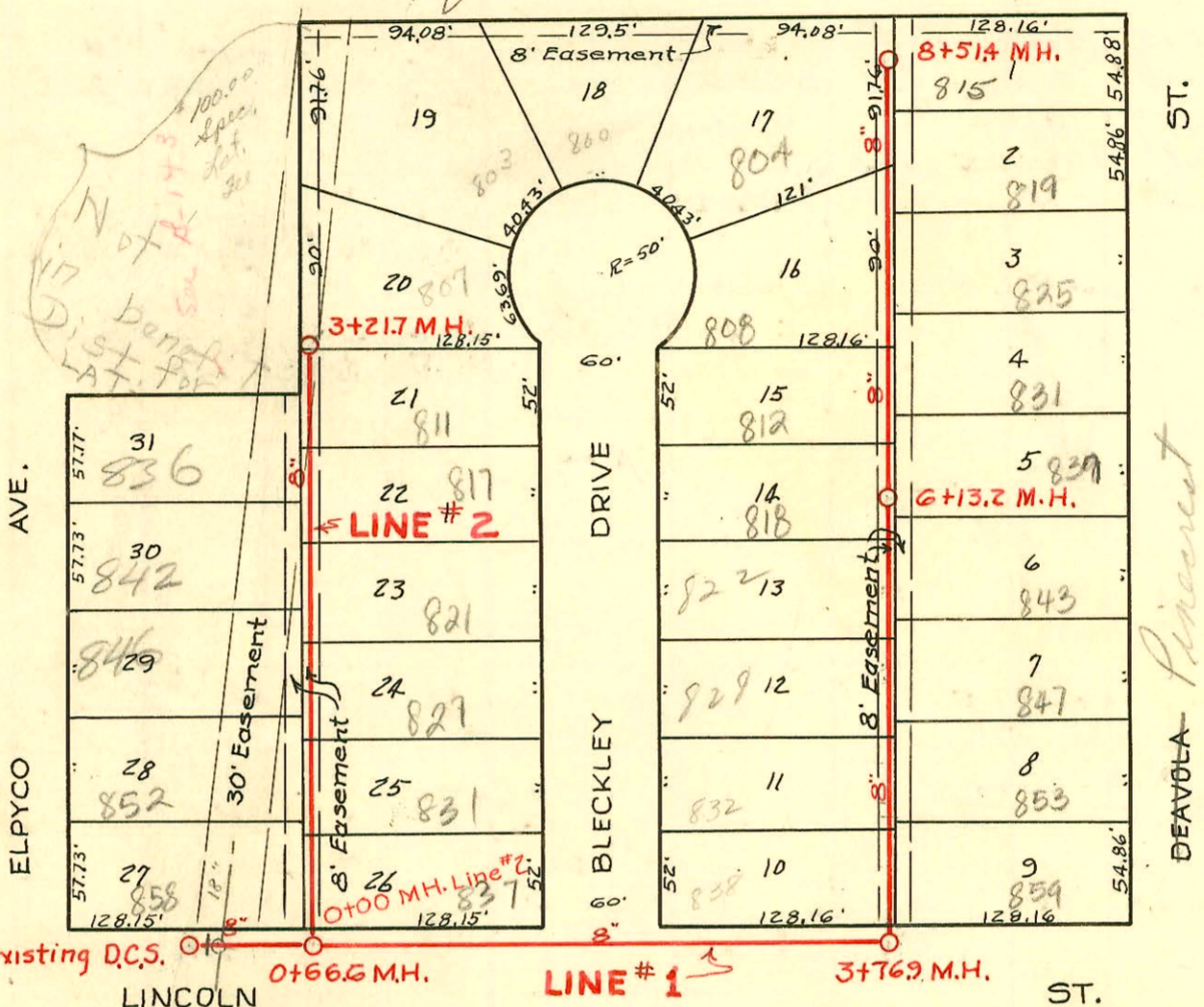


CONSTRUCTION RECORD

N

SCALE 1"=100'

See F-116
Marris



0+00 (New) M.H. on Existing D.C.S. 0+66.6 M.H. LINE # 1 3+76.9 M.H. ST.

Submain 2 S.S.#12 Dry Creek

Lat. 45, Dry Creek Submain, S.S.#12
 City of Wichita, Kansas
 L.K. White City Engineer
 W. B. Carter 1950
 Project No. C 20-10
 Book "Sewer 46"

CONSTRUCTION RECORD

SERVICE RECORD

STATION	ELEVATION		Depth	MANHOLE	4-INCH "Y" BRANCHES		No. of Permit		House Number		DATE OF PERMITS	
	Ground	Grade			North West	South East	North West	South East	North West	South East	North West	South East
0+00	144.0	136.84	7.37	0+0 New MH. over Existing D.C.S.								
0+66.6	145.1	137.08	8.27	0+66.6								
1+00	145.5	137.19	8.59									
2+00	146.4	137.44	9.20									
3+00	148.4	137.79	10.88									
3+76.9	148.3 148.4	138.17 138.39	10.37 in 10.23 out	3+76.9								
4+00	148.2	138.42	10.07									
					4+07.7	4+04.7	# 345	# 336	838 R Bleckley	859 R Bleckley	4/4/50	4/4/50
					+61.8	+58.8	# 346	# 337	833 R Bleckley	853 R Bleckley	4/4/50	4/4/50
5+00	147.6	138.77	9.12									
					5+13.3	5+10.3	# 344	# 338	834 R Bleckley	847 R Bleckley	4/4/50	4/4/50
					+70.7	+67.7	# 348 837 R Bleckley	# 339 843 R Bleckley	837 R Bleckley	843 R Bleckley	4/4/50	4/4/50
6+00	150.0	139.12	11.14									
6+13.2	150.1	139.21 141.00	11.14 in 9.35 out	6+13.2	6+23.0	6+20.0	# 349 834 R Bleckley	# 340 834 R Bleckley	837 R Bleckley	837 R Bleckley	4/4/50	4/4/50
					?	?	# 350 834 R Bleckley	# 341 834 R Bleckley	831 R Bleckley	831 R Bleckley	4/4/50	4/4/50
7+00	153.2	141.48	11.92									
					7+30.0	7+27.0	# 342 834 R Bleckley	# 342 834 R Bleckley	838 R Bleckley	833 R Bleckley	5-2-50	4/4/50
					+89.7	7+86.7	# 343 834 R Bleckley	# 343 834 R Bleckley	814 R Bleckley	814 R Bleckley	12-7-49 4-29-50	4/4/50
8+00	154.2	142.10	12.33									
						8+40.1		# 344	815 R Bleckley	815 R Bleckley		4/4/50
8+51.4	154.4	142.47	12.15	8+51.4								
Line # 2												
0+00	144.9	137.26	7.85	Line # 1 ← 0+00=0+66.6	0+28.0	0+25.0	# 357	# 351	854 R Bleckley	831 R Bleckley	4/4/50	4/4/50
					+81.0	+78.0	# 358	# 352	852 R Bleckley	831 R Bleckley	4/4/50	4/4/50
1+00	145.6	137.36	8.48									
					1+49.2	1+28.4	# 359	# 353	846 R Bleckley	837 R Bleckley	4/4/50	4/4/50
					+83.1		# 354		831 R Bleckley	831 R Bleckley	4/4/50	4/4/50
2+00	146.0	137.46	8.77									
					2+03.6		# 360		842 R Bleckley	817 R Bleckley	4/4/50	4/4/50
						2+33.9		# 355	817 R Bleckley	817 R Bleckley		4/4/50
					2+67.4			# 356	811 R Bleckley	811 R Bleckley		4/4/50
3+00	146.4	137.56	9.11		3+17.1		C50205		810 R Bleckley	807 R Bleckley	7-7-75	
3+21.7	146.6	137.58	9.29	3+21.7	(4" Stub N.E.)		# 753		807 R Bleckley	807 R Bleckley	4-27-50	

(Candle Street)

810 S. Elmer - Reported by field Engineer that this rd. was halld to 18" main shown in 5-143. City is abandonin 18" main. Wildcat Const doing project. I advised Mike Stump that we need permits. I imp from wildcat no now refer to the later. etc.
 Rec. # 248169 - 810 S. Elmer - 100" Lot for pl. 7/7/75
 # 754 - 2nd - 800 S. Bleckley Dr. - 4-27-50 - Frederick Rlly. Co. (2nd on east + west main)
 # 755 - 2nd - 803 S. Bleckley Dr. - 4-27-50 - Frederick Rlly. Co. (2nd on east + west main)
 # 361 - 2nd - 836 S. Elmer - 4-4-50 - Frederick Rlly. Co.
 C9105 top - 822 S. Bleckley 6-12-68 - at Henning (5+55.7)