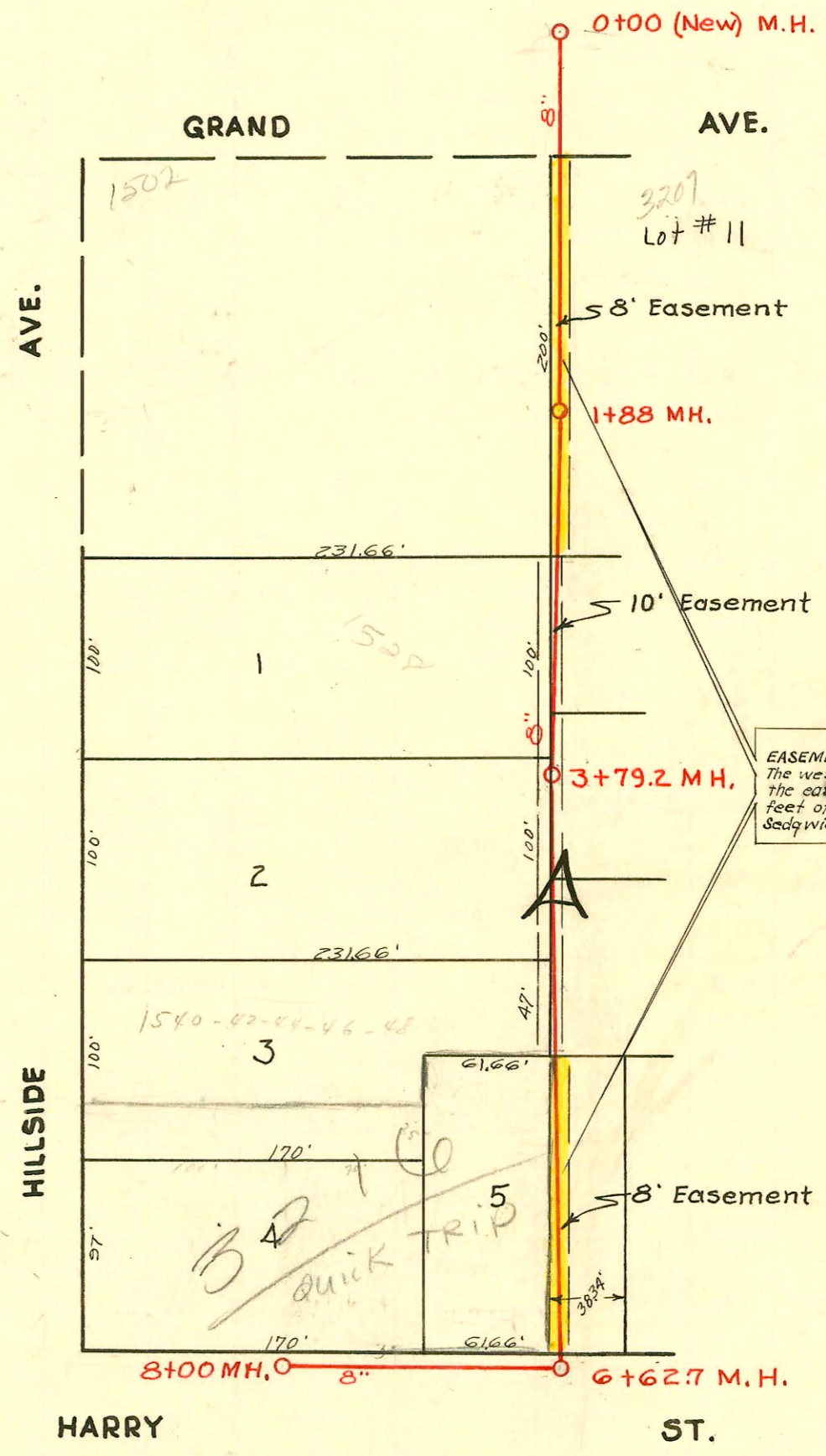


CONSTRUCTION RECORD SERVICE RECORD

N



EASEMENT # 2412, From Catholic Diocese of Wichita, Feb. 28, 1950. The west eight (8) feet of Lot 11 and the west eight (8) feet of the east thirty-eight and thirty-four hundredths (38.34) feet of Lot 5, all in Block A, Pineridge Addition to Wichita, Sedgewick County, Kansas.

property east of survey line could for lateral + automatic fu

Lat. 5, Dist. 10, S.S.#12
 City of Wichita, Kansas
 L. K. White City Engineer
 Martin K. Eby 1950
 Project No. 029-57
 Book # E-Z

Revised B4 366 - 1540-42-44-46-48 S. Hillside - Larry Carter P.lby. 10-18-65 (4+99.2)
 # 04367 top - 1540-42-44-46-48 S. Hillside - Larry Carter P.lby. 10-18-65 top ()
 22727-3216 E, Harry (Quick Trip) 3-15-89 - N.C.

CONSTRUCTION RECORD						SERVICE RECORD						
STATION	ELEVATION		Depth	MANHOLE	4-INCH "Y" BRANCHES		No. of Permit		House Number		DATE OF PERMITS	
	Ground	Grade			North West	South East	North West	South East	North West	South East	North West	South East
0+00	127.9	118.75	9.18	New MH. 0+00								
1+00	131.3	119.15	12.97									
1+88	133.8	119.50	15.08	1+88								
2+00	133.7	119.55	15.02		1+48.0							
3+00	133.3	119.95	13.87		2+62		#1475		1528 1 Helms		5-17-52	
3+79.2	132.1	120.27	12.60	3+79.2								
4+00	132.0	120.35	12.10		4+26.5 .7858		#308		1530 Helms		3-23-56	
5+00	131.0	120.75	11.14		5+60.2 ^{TAB}		22727 22514		3216 E. Harry		3-15-59	
6+00	129.5	121.15	9.13		6+08.1		#960		3214 E. Harry		2-1-59 4-21-52	
6+62.7	127.7	121.40 121.62	7.03 out 8.22 in	6+62.7								
7+00	128.5	121.75	6.78		Y NORTH 7+41.2		#22513 16229 22512 #333		3204 E. Harry		2-1-59 10-8-62 2-1-59 4-2-50	
8+00	128.3	122.15	6.77	8+00	(6" Stub North)							

#B3309 Top 3209 E. Grand. Robt. McElroy - 4-30-65 (2+87.2)
 Per #65857 \$50.00 spec. for Robt. McElroy - 4-30-65 (3209 E. Grand)

#4476 - Lawrence Pfg. Co. - Top of 1520 S. Helms - 4-28-51
 #948 - Private 3214 E. Harry - 4-19-52 - Trailer - Eugene Reynolds
 #2766 - Rock Durand - 3207 E. Grand - 10-3-52 - Top
 #946 - Hating way. Trailer #3214 E. Harry - Eugene Reynolds - 4-19-52
 6901 - Harry Mann - 3207 1/2 E. Grand - 11-14-58 - Top - Sealoff #B3308 - 3205 (3207 1/2) E. Grand. Robt. McElroy 4-30-65
 1732 - Rudy 1540 S. Helms 8-1-56 Top (4+99.2)
 9845 Top 1502 S. Helms to E. Grand 3-31-59 2+47