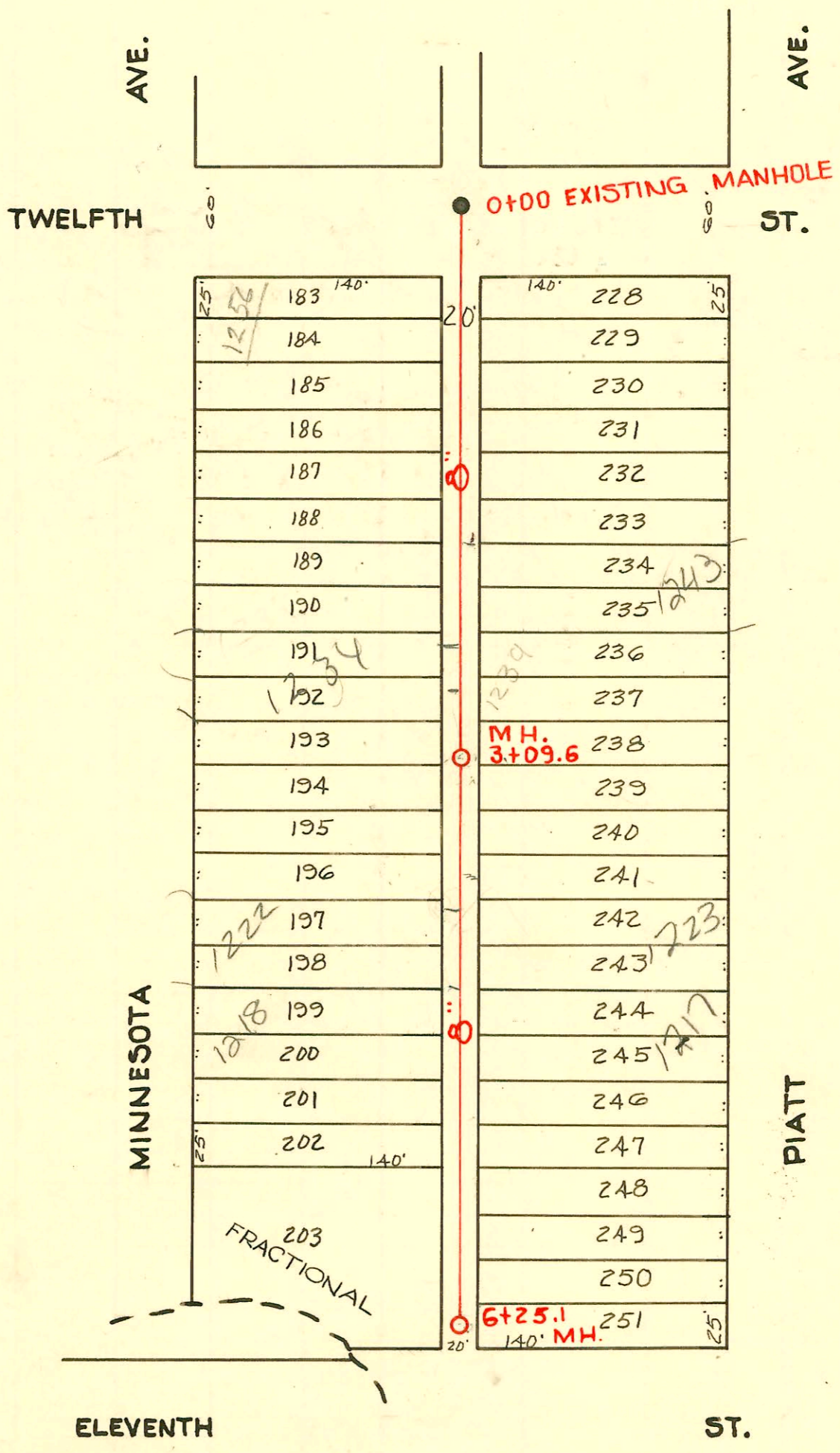


CONSTRUCTION RECORD SERVICE RECORD



N
 Scale 1"=80'
 Neighbor and
 Reutil

LAT. 1, DIST. Q, S.S. # 12
 CITY OF WICHITA, KANSAS
 L. K. WHITE CITY ENGINEER
 MARTIN K. EBY 1950
 MAY 1950, PROJECT NO. CZO-17
BK. # 8 M

Swk 252-01362 5-1502 NK 1222 N Minnesota Right way 8/65
 TWIN CO, New trap, 4" SCH 40 PVC 106" SOF MH 3+09.6 (4+15.6) 1/4" fall, Preeco Saddle

CONSTRUCTION RECORD						SERVICE RECORD						
STATION	ELEVATION		Depth	MANHOLE	4-INCH "Y" BRANCHES		No. of Permit		House Number		DATE OF PERMITS	
	Ground	Grade			North West	South East	North West	South East	North West	South East	North West	South East
0+00	115.8	109.31	6.76	0+00 Exist. MH.	0+63.7	0+41.0 +92.0						
1+00	116.3	109.41	7.11		1+18.3 +66.5	1+42.9 1+89.1						
2+00	116.2	109.51	6.91		2+25.0 +48.2	2+72.8 +98.0	4293 16363	12367 Minnesota 12327 Minnesota	1235 KATH	16-31-50 11-14-60		1-12-52
3+00	115.3	109.61	6.10		3+50.2	3+25.0	#1105	12371 Minnesota	1235	5-19-50	9-22-50	
3+09.6	115.4	109.62	6.00	3+09.6	+93.4	+74.0	#21124 #58	12327 Minnesota	1239 KATH	9-24-70 2-10-59	9-8-52	
4+00	114.4	109.71	4.92		4+40.0 +76.4	4+57.0 +98.3	#321 #1845	12371 Minnesota 1217 KATH	1215 KATH	see below 9-19-01	5-21-50 8-3-50	
5+00	113.5	109.81	3.91		5+22.1 +45.7 +81.0	5+54.0	#3332 #5309	12127 Minnesota 1202 KATH	1207 KATH	2-3-55 7-21-51	5-11-50	
6+00	116.0	109.91	6.35		6+05.0		#962	1203 KATH			5-11-50	
6+25.1	116.6	109.94	6.94	6+25.1								

2002-0245 8/6/02 1223 N Piatt Ave AE Henning - city wye repair 4" Predo 102.6' S of MH 3+09.6 (412.2)

2001-03305 12/28/01 1217 Piatt AE Henning - Twin co 147' S of MH 3+09.6 (4156.6) 4" SCH 40 PVC 1/4" fall tied to wye with donut

Tap - #2426 - 9-8-52 - Loader - 1223 Piatt R see JUST ABOVE
 Tap - #2713 - 1250 N. Minnesota - 9-29-52 - Joe Mc Donald (0+94)
 Tap - #2744 - 1243 Piatt - 10-2-52 - Lee Layton 413102 AE Henning 28' N of SPL
 Tap - #6391 - 1202 N. Minnesota - 9-10-53 - Joe Mc Donald
 Tap 2459 1234 N Minnesota 9-20-56 Guldberg
 Repair # B10120 - 1239 Piatt - 1-16-74 Jack Berman (2+72.6)
 5295 - Tap - 12560 Minnesota - 9-27-57
 5706 Tap 1247 Piatt 11-14-57 - B. K. ...
 95.7511-7
 5626 Tap - 1248 P. Minnesota - A. Kay - 5-24-58
 D.L. Repl 25' of sewer at upper end with C.O. tied onto clay tile.