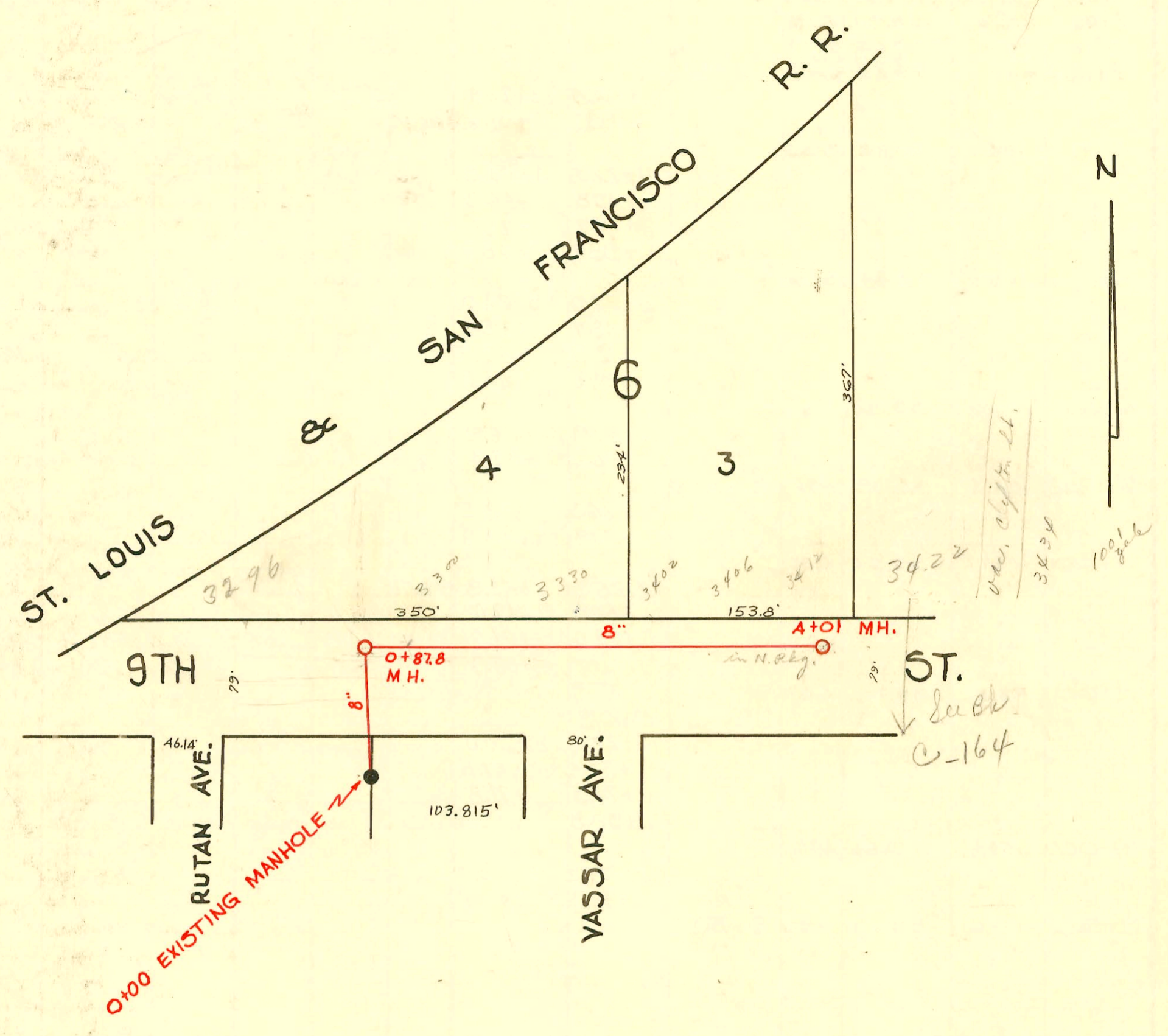


CONSTRUCTION RECORD



LAT. 13, DIST. D, S.S. #12  
 CITY OF WICHITA, KANSAS  
 L. K. WHITE CITY ENGINEER  
 W. B. CARTER 1950  
 MAY 1950, PROJECT NO. C20-11  
 BK.# M5

*Sewer 260*

*440' depth 24'*  
*3434*  
*100' grade*  
*ST. Sub C-164*

CONSTRUCTION RECORD						SERVICE RECORD						
STATION	ELEVATION		Depth	MANHOLE	4-INCH "Y" BRANCHES		No. of Permit		House Number		DATE OF PERMITS	
	Ground	Grade			North West	South East	North West	South East	North West	South East	North West	South East
0+0	167.3	161.16	6.41	0+00 Exist. MH.								
0+87.8	165.3 165.0	161.34 161.50	4.21 in 3.27 out	0+87.8								
1+00	165.7	162.12	3.80									
					1+08.0							
2+00	169.3	163.07	6.51		2+34.2 +80.1			#1064	3402 6.9th		5-17-50	
3+00	171.6	164.02	7.85		3+33.0 +79.2			#1063 #2369	3406 E. 9th 3412 E. 4th		5-17-50 9-13-50	
4+00												
4+01	174.1	164.58	9.33	A+01								

#1065 - Top - 3330 E. 9th - 5-17-50 - Eugene Reynolds  
 #1516 - Top - 3300 E. 9th - 6-4-52 - Joe McDonald  
 #16796 - 3396 E. 9th St. - 3-18-63 - Kennedy Hwy. - Top in MH. 0+87.8