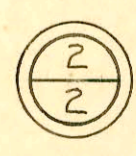
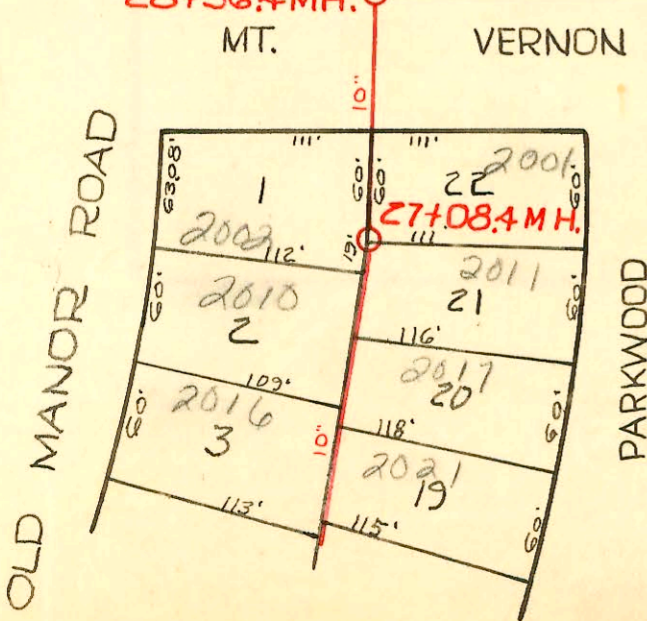
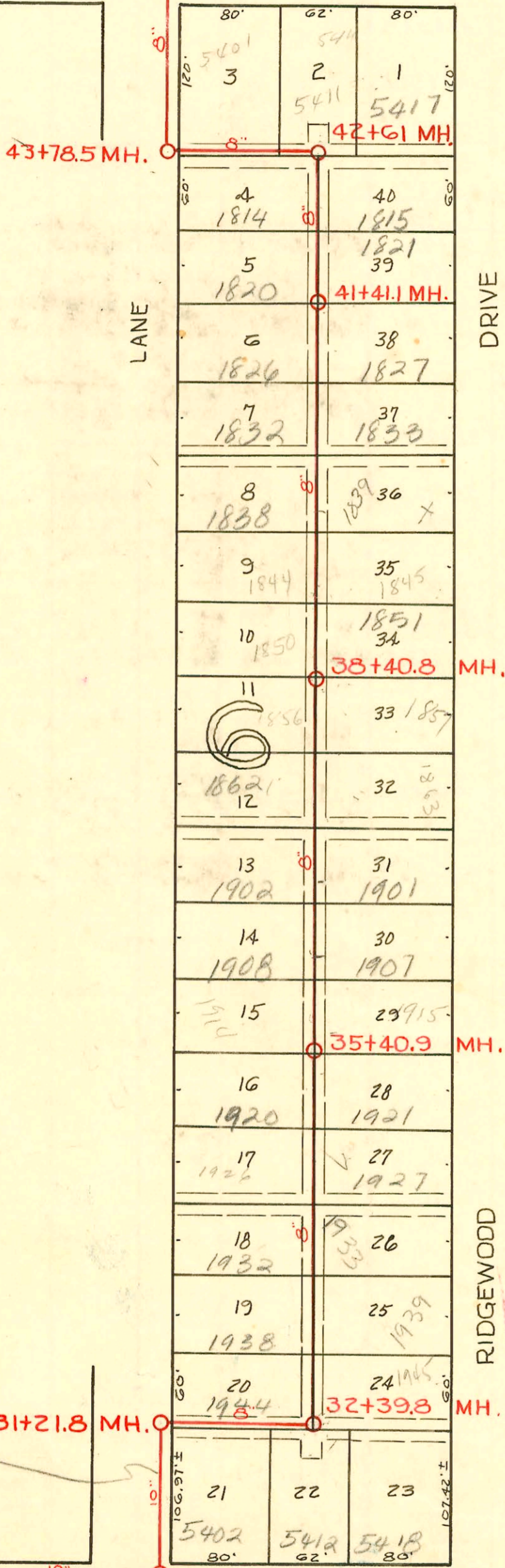
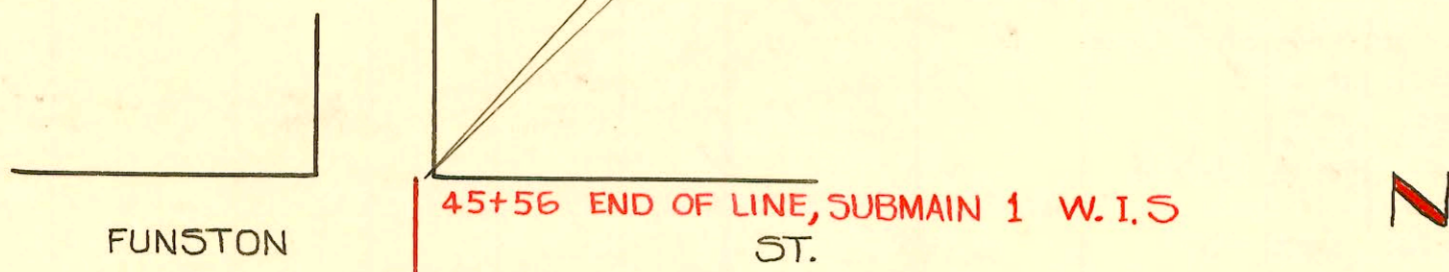


CONSTRUCTION RECORD

SERVICE RECORD

45+56 End Project No. C 29-33 at North Line Funston — Begin Private Job.



CONSTRUCTION RECORD

SERVICE RECORD

STATION	ELEVATION		Depth	MANHOLE	4-INCH "Y" BRANCHES		No. of Permit		House Number		DATE OF PERMITS	
	Ground	Grade			North West	South East	North West	South East	North West	South East	North West	South East
27+00	128.5	115.83	12.95		Y West	Y East						
27+08.4	128.8	115.87	13.22	27+08.4				17119	5001 S.R.			10-20-56
						27+20.6		#1658	Rechecked			6-14-52
28+00	130.3	116.23	13.29									
28+36.4	129.5 130.4	116.40 116.57	13.78 in 14.10 out	28+36.4								
29+00	129.9	116.83	13.33									
30+00	129.4	117.23	12.38									
30+00	129.5 130.8	117.25 117.38	12.53 in 12.66 out	30+00								
31+00	128.5	117.73	11.04			Y South						
31+21.8	128.6 128.5	117.83 117.95	11.04 in 10.55 out	31+21.8								
						31+50.9		#3866	5402 Mt. Vernon			2-20-51
32+00	130.3	118.22	12.34									
						32+01.6		#3867	5412 Mt. Vernon			2-20-51
32+39.8	131.0 130.8	118.40 118.62	13.81 in 12.38 out	32+39.8	Y West	Y East						
					32+55.7	32+52.7	93-8642-7 #3964	97-15491-7 #5890	1944 S.R. Rechecked	1948 S.R. Rechecked	4-20-93 1-1-51	9-2-57 9-22-51
33+00	130.9	118.82	12.31									
					33+18.9	33+15.9	2000-02188 #3963	97-15491-7 #5891	1938 S.R. Rechecked	1939 S.R. Rechecked	10-5-00 1-11-51	9-22-51 9-22-51
					+76.9	33+73.9	#3962	97-15491-7 #5892	1938 S.R. Rechecked	1939 S.R. Rechecked	1-11-51 1-11-51	9-22-51 9-22-51
34+00	131.19	119.22	11.97									
					34+37.5	34+34.5	#3961	97-15491-7 #5893	1926 S.R. Rechecked	1927 S.R. Rechecked	1-11-51 1-11-51	9-22-51 9-22-51
					+97.6	+94.6	#3960	97-15491-7 #5894	1926 S.R. Rechecked	1927 S.R. Rechecked	1-11-51 1-11-51	9-22-51 9-22-51
35+00	130.0	119.62	10.60									
35+40.9	130.4 130.4	119.79 120.00	10.84 in 10.63 out	35+40.9								
					35+58.1	35+55	44-10143-7 #3659	97-15491-7 #5895	1944 S.R. Rechecked	1945 S.R. Rechecked	6-23-94 1-11-51	9-22-51 9-22-51
36+00	131.8	120.22	11.78									
					36+19.8	36+16.8	57784 #3658	97-15491-7 #5896	1908 S.R. Rechecked	1909 S.R. Rechecked	9-21-76 1-11-51	9-22-51 9-22-51
					36+77.0	+74.0	#3657	97-15491-7 #5881	1902 S.R. Rechecked	1901 S.R. Rechecked	1-11-51 1-11-51	9-21-51 9-21-51
37+00	133.4	120.62	13.02									
					37+37.5	37+34.5	10903 #3656	97-15491-7 #5880	1862 S.R. Rechecked	1863 S.R. Rechecked	1-11-55 1-11-55	5-17-84 9-21-51
					+98.0	+95.0	#3655	97-15491-7 #5879	1856 S.R. Rechecked	1854 S.R. Rechecked	1-11-55 1-11-55	9-21-51 9-21-51
38+00	133.8	121.02	13.07									
38+40.6	134.2	123.70	13.21 in 10.71 out	38+40.6								
					38+60.0	38+57.0	#3654	97-15491-7 #5878	1855 S.R. Rechecked	1851 S.R. Rechecked	1-11-55 1-11-55	9-21-51 9-21-51
39+00	135.9	123.92	11.22									
					39+18.7	39+15.7	18444 #3653	97-15491-7 #5877	1844 S.R. Rechecked	1845 S.R. Rechecked	1-11-55 1-11-55	9-21-51 9-21-51
					+77.0	39+74.0	#3652	97-15491-7 #5876	1838 S.R. Rechecked	1839 S.R. Rechecked	1-11-55 1-11-55	9-21-51 9-21-51
40+00	135.7	124.32	11.62									
					40+37.8	40+34.8	2665 #3651	97-15491-7 #5721	1837 S.R. Rechecked	1835 S.R. Rechecked	2-23-81 1-11-51	8-31-51 8-31-51
					+98.9	+95.9	#3650	97-15491-7 #5722	1826 S.R. Rechecked	1825 S.R. Rechecked	1-11-51 1-11-51	8-31-51 8-31-51
41+00	136.2	124.72	11.70									
41+41.1	135.7	124.90	11.06	41+41.1								
					41+59.5	41+56.5	#3649	97-15491-7 #5720	1820 S.R. Rechecked	1821 S.R. Rechecked	1-11-50 1-11-50	9-31-51 9-31-51
42+00	136.5	125.12	11.64									
					42+20.1	42+17.1	#3648	97-15491-7 #5719	1814 S.R. Rechecked	1815 S.R. Rechecked	1-11-51 1-11-51	6-27-96 8-31-51
42+61.0	137.6 137.5	125.38 126.62	12.93 in 11.05 out	42+61.0	Y North							
					42+78							
43+00	138.0	126.77	11.52									
					43+37.1							
43+78.5	139.6 138.8	127.10 127.30	12.76 in 11.72 out	43+78.5								
44+00	139.1	127.36	12.02									
45+00	140.7	127.76	13.21									
45+56												

Continued from page 190

(End of Line)  
Submain 1

2000-02188-10/5100-1938 S Parkway Ln- Padgett Exc- 1V32, 1V45, 2H45 - City, Predco 79.1' N of MH 32+39.8 (33+11.9)

1944 S Parkway - Repair (4" SDP35 - tied onto orange bag at house under patio & ran to wye.)