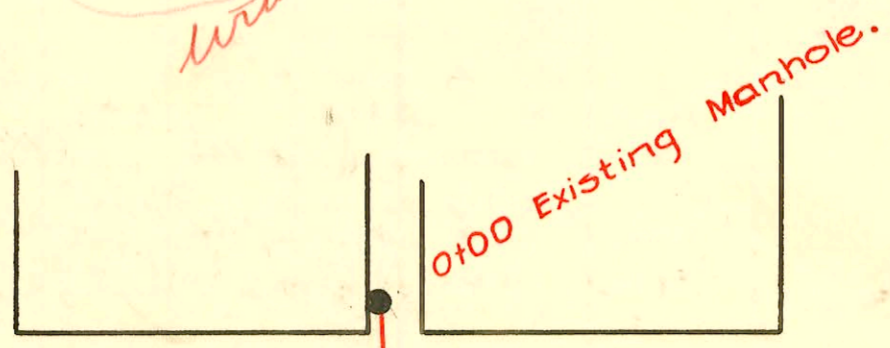


CONSTRUCTION RECORD SERVICE RECORD

6" y - Must be trapped with 6" traps



SCOTT AVE.

54	53
56	55
58	57
60	59
62	61
64	63
66	65
68	67
70	69
72	71
74	73
76	75
78	77
80	79
82	81
84	83
86	85
88	87
90	89
92	91
94	93
96	95
98	97
100	99
102	101
104	103

AVE.

AVE.

6" y - Must be trapped with 6" traps

6" y - Must be trapped with 6" traps

Scale 1" = 80'

WASHINGTON

IDA

Can have 4" traps

MARION ROAD

6" y - Must be trapped with 6" traps

LAT. 16, DIST. A, S.S. # 20
 CITY OF WICHITA, KANSAS
 L. K. WHITE CITY ENGINEER
 W. B. CARTER 1950
 MAY 1950, PROJECT NO. C20-13
 Book # 14 Sewer

CONSTRUCTION RECORD						SERVICE RECORD							
STATION	ELEVATION		Depth	MANHOLE	4-INCH "Y" BRANCHES		No. of Permit		House Number		DATE OF PERMITS		
	Ground	Grade			North West	South East	North West	South East	North West	South East	North West	South East	
0+00	96.3	89.97	6.57	0+00 Exist. MH.									
1+00	96.3	90.07	6.45										
					0+78.7		#6391		2507 2507 2da			11-7-51	
					1+04 +18.8	1+07	#1231 11494	#6389	2505 Washington 2507 Washington	2501 2da	6-7-50 10-9-59	11-7-51	
					1+65.3 +98.5	1+68.3 +90.0	7704	#6392	2506 Washington 2509 2da		3-18-83	2-17-7-51	
2+00	95.6	90.17	5.65										
2+40.7	95.8	90.21	5.87	2+40.7	2+32.9	2+35.9	#3824		2563 Washington			2-8-51	
3+00	95.4	90.27	5.40										
					3+20.3	3+23.3	4738	99-12417	2555 Washington		6-24-57		
					3+92.0	3+67.6	#4104	#4104	2531 B 2532 SA Washington		7-25-97 4-9-65	7-23-97 2-13-53	
4+00	95.7	90.37	5.56										
					4+38.0	4+41.0 +62.4				2537 2da			5-16-50
4+76	95.9	90.45	5.71	4+76									
					4+80.5		#4639		2540 Washington				5-12-51
5+00	95.9	90.47	5.68										
					5+09.1	5+12.1	#5744	#5744	2541 2da				7-8-53
					+34.0	+37.0	#4644	#5745	2546 Washington 2548 2da		5-14-51		7-8-53
					+58.6	5+61.6							
					+83.4	+86.4							
6+00	95.6	90.57	5.27										
					6+08.2	6+11.2	#5123	#5650	2553 Washington 1020 Marion Rd.		7-9-51		6-24-53
					+33.0	+37.0							
					6+57.5	+60.5	#5124	#5651	2543 Washington 2561 Wash		7-9-51		
					6+82.37	+85.3	#1687	#1687	2561 Wash		6-20-52		
7+00	95.9	90.67	5.52										
					7+00.5	7+03.5							
7+16.7	96.0	90.69	5.52	7+16.7									

#4112 - Inf at 2+90.4 - 2511 2da - 2-14-53 - Joe Mc Donald
 #6892 - Inf - 2507 2da - 11-5-53 - Scatty Clark P.Hy. Co
 2517