

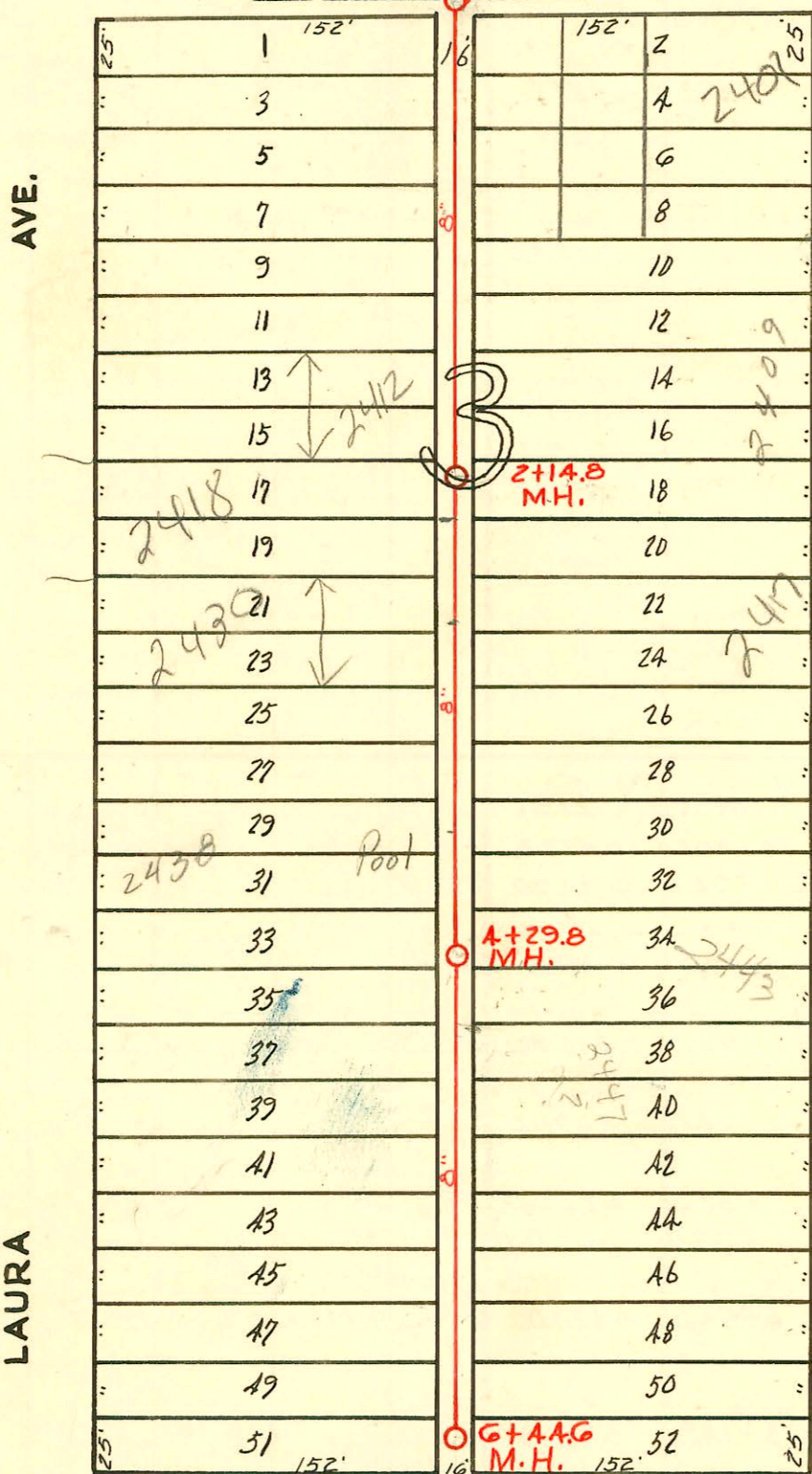
6" Y's

TRAP AREA

0+00 New Manhole on Existing 36" Line.

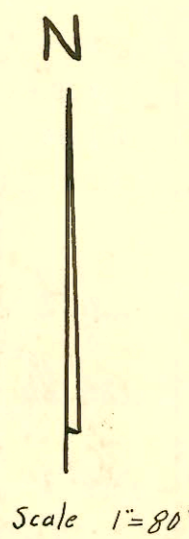
PAWNEE

AVE.



6" Y's

6" Y's



LAURA

PATTIE

SCOTT

AVE.

6" Y's

LAT. 15, DIST. A, S.S. # 20
 CITY OF WICHITA, KANSAS
 L. K. WHITE CITY ENGINEER
 W. B. CARTER 1950
 MAY 1950, PROJECT NO. C20-7

Book # 43

6" Y's

CONSTRUCTION RECORD						SERVICE RECORD						
STATION	ELEVATION		Depth	MANHOLE	6-INCH "Y" BRANCHES		No. of Permit		House Number		DATE OF PERMITS	
	Ground	Grade			North West	South East	North West	South East	North West	South East	North West	South East
0+00	98.2	87.83	10.59	0+00 New Manhole	0+33.7 +64.6	0+52.6 +95.4	#194 #3009 #2009 #7364	#6921 13364	1227 E 1235 E 1203 E 1203 E 1203 E 1203 E	1237 E 1203 Pawnee	2-26-52 6-18-51 4-30-52 4-1-55 3-26-69	4-23-52 4-1-55
1+00	98.8	87.93	11.07		1+26.5 +84.7	1+25.5 +81.7	#1918 #1918 #1918 #1918	#896 #896 #896 #896	2409 E 2409 E 2409 E 2409 E	2409 E Pattie	7-19-52	2-19-54 4-15-52
2+00	97.2	88.03	9.45		2+42.6 +73.8	2+39.6 +67.8	#3592 #2790 #4210 #2607	#199307 #7368	2426 2430 L 2430 L 2430 L	2417 A Pattie	1-5-61 3-29-52 7-26-50	12-24-52 2-4-52
3+00	97.6	88.13	9.67		3+20.1 +76.0	3+17.1 +79.0	#1112 #1111	#7378 #687	2432 2438 2438 2438	2431 Pattie Pattie Pattie	5-22-50 5-22-50	1-11-54 8-28-51
4+00	96.8	88.23	8.83		4+22.3 +77.2	4+25.3 +80.2	#1109 #1110	#1853 3600	2442 2448 2448 2448	2425 Pattie Pattie Pattie	5-22-50 5-22-50	8-30-54 4-9-55 7-2-51
5+00	96.7	88.33	8.65		5+20.4 +48.2 +80.2	5+23.4 +51.2 +83.2	#673 #6821	#6821	2460 2460 2460	2451 Pattie	10-31-52	6-29-52
6+00	96.6	88.43	8.41		6+06.3 +34.8	6+09.3 +37.8		#6949		2459 Pattie		11-22-55
6+44.6	96.6	88.48	8.40	6+44.6								

N/C 2006-00692-2418 S (aura - 4" sch 40 PVC, 6" wye 27.8' south of m H (2+42.6) 1/4 full, shallow 4" c/o @ house trap, (2) 22V AC Henning

#4752-50 - 1227 E Pawnee - Al Henning 11/29/81
 #2097-24 - 1235 E, Pawnee - 8-8-52 - Phipps Pelly Co
 #3452-24 - 2401 Pattie - 12-9-52 - Joe Mc Donald - Altor-Olson
 #5580 - Wye - 2447 Pattie - 7-13-55 - James Pelly + Nesting
 #066427 - Repair - 2452 Laura - 5-16-78 - Vern Hill