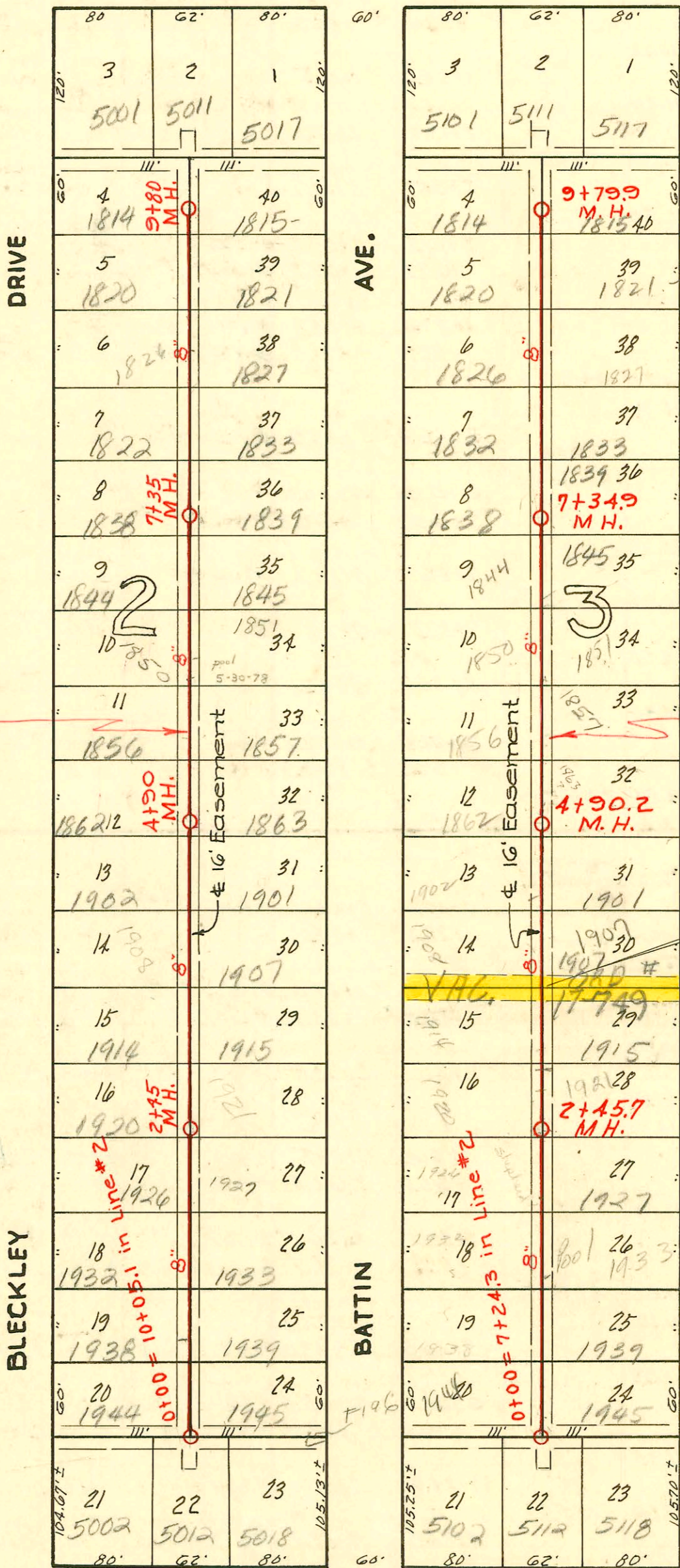


CONSTRUCTION RECORD

SERVICE RECORD

FUNSTON

ST.



Scale 1"=100'

EASEMENT # 2411, From Builders Inc., March 4, 1950  
 The south ten (10) feet of Lots 14 and 30, and the north  
 ten (10) feet of Lots 15 and 29, Block 3, Builder's  
 Third Addition to the City of Wichita, Sedgwick,  
 County, Kansas.

NOTE: See page 196 for title, name of contractor and date of project.

2/6

CONSTRUCTION RECORD

SERVICE RECORD

Line # 4

STATION	ELEVATION		Depth	MANHOLE	4-INCH "Y" BRANCHES		No. of Permit		House Number		DATE OF PERMITS	
	Ground	Grade			North West	South East	North West	South East	North West	South East	North West	South East
0+00	142.4	130.00	12.64	0+00=10+05.1 In line #2								
					0+12.7 +73.6	0+09.7 +70.6	#2218 #2217	#6118 #7022	1944 S. 1959 S.	1946 S. 1939 S.	9-5-50	9-13-90 1-11-52
1+00	143.5	130.40	13.30		1+34.5 +95.0	1+31.5 +92.0	#2216 #2215	#7021 #7020	1933 S. 1926 S.	1933 S. 1926 S.	9-5-50	1-11-52 1-11-52
2+00	144.1	130.80	13.58									
2+45	143.9	130.98	13.13	2+45								
					2+55.5	2+52.5	#2212	#7019	1920 S. 1920 S.	1921 S. 1921 S.	9-5-50	8-7-51 1-11-52
3+00	143.8	131.20	12.89		3+16.5 +73.9	3+13.5 +70.9	#2213 #2214	#7018 #7017	1914 S. 1908 S.	1915 S. 1907 S.	9-5-50 9-5-50	1-11-52 1-11-52
4+00	143.2	131.60	11.88		4+34.5 +82.7	4+31.5 +79.7	#1073 #1074	#7016 #7016	1902 S. 1852 S.	1902 S. 1865 S.	5-17-50	1-11-52 1-11-52
4+90	142.7	131.96	10.95	4+90								
5+00	142.7	132.00	10.90		5+55.4	5+52.4	#1073	#6939	1856 S. 1856 S.	1859 S. 1859 S.	10-22-90 5-17-50	8-7-51 12-28-51
6+00	142.8	132.40	10.67		6+07.4 +67.5	6+04.4 +64.5	#1072 #1071	#6938 #6937	1850 S. 1844 S.	1851 S. 1845 S.	5-17-50 5-17-50	9-23-51 12-28-51 12-28-51
7+00	143.1	132.80	10.57		7+30.4	7+27.4	#1070	#6936	1838 S. 1838 S.	1839 S. 1839 S.	5-17-50	12-28-51
7+35	143.9	132.94	11.24	7+35	7+82.5	7+85.5	#1069	#6935	1832 S. 1832 S.	1833 S. 1833 S.	5-17-50	3-22-54 12-28-51
8+00	144.5	133.20	11.56		8+48.7	8+45.7	#1067	#6934	1827 S. 1827 S.	1827 S. 1827 S.	see below	5-17-51 12-28-51
9+00	144.7	133.60	11.33		9+09.5 +66.7	9+06.5 +63.7	#1067 #1066	#6933 #6932	1820 S. 1814 S.	1821 S. 1815 S.	5-17-50	12-28-51 12-27-51
9+80	146.1	133.92	12.38	9+80								

Line # 5

0+00	140.5	126.98	13.76	0+00=7+24.3 in Line #2								
					0+18.2 +76.1	0+15.2 +73.1	#7104 #7105	#783 #782	1944 S. 1938 S.	1945 S. 1939 S.	12-13-02 1-17-52	4-4-52 4-4-52
1+00	139.8	127.40	12.65		1+34.0 +94.3	1+31.0 +91.3	#7106 #7107	#781 #780	1932 S. 1926 S.	1933 S. 1927 S.	1-17-52 1-17-52	4-4-52 4-4-52
2+00	138.7	127.80	11.19		2+39.4	2+36.4	#7108	#777	1920 S. 1920 S.	1921 S. 1921 S.	1-17-52	3-7-51 3-7-51
2+45.7	138.3	127.98	10.59	2+45.7	2+96.6	2+93.6	#7109	#778	1914 S. 1914 S.	1915 S. 1915 S.	1-17-52	4-4-52
3+00	137.7	128.20	9.74		3+66.2	3+63.2	#7110	#777	1908 S. 1908 S.	1909 S. 1909 S.	1-17-52	12-22-01 4-4-52
4+00	138.2	128.60	9.85		4+26.5 +83.7	4+23.5 +80.7	#7111 #7112	#776 #775	1902 S. 1862 S.	1901 S. 1865 S.	1-17-52	4-4-52 4-4-52
4+90.2	140.0	128.96 130.00	11.29 in 10.25 out	4+90.2	5+36.7	5+33.7	#7114	#774	1850 S. 1850 S.	1851 S. 1851 S.	1-22-52	8-10-51 4-4-52
5+00	141.3	130.04	11.54		6+03.5 +66.6	6+00.5 +63.6	#7166 #7165	#773 #772	1850 S. 1844 S.	1851 S. 1845 S.	1-22-52	4-4-52
7+00	143.4	130.84	12.77		7+21.1	7+18.1	#7164	#771	1838 S. 1838 S.	1839 S. 1839 S.	1-22-52	4-4-52
7+34.9	143.9	130.98 132.02	13.13 in 12.09 out	7+34.9	7+87.4	7+84.4	#7163	#770	1832 S. 1832 S.	1833 S. 1833 S.	see below	11-12-02 4-4-52
8+00	144.6	132.28	12.56		8+46.1	8+43.1	#7162	#769	1826 S. 1826 S.	1827 S. 1827 S.	1-22-52	4-4-52
9+00	145.3	132.68	12.91		9+07.5 +69.8	9+04.5 +66.8	#7161 #7160	#768 #767	1820 S. 1814 S.	1821 S. 1815 S.	1-22-52	9-15-94 4-4-52
9+79.9	146.0	133.00	13.26	9+79.9								

2002-03043 11/21/03 1833 Pinecrest - Padgett Exc - 4916 N of MH 7+34.9 (7+85.4) Predco Saddle 4" SCH40 PVC 1/4" fall  
3V22  
2001-01226-5/17/01-1827 S Battin - Padgett Ex - 4" SCH40 - CITY 4" Predco. 110.7' N of MH 7+35 (8+45.7) 1V22, 1H22, 2V45. 1 Fernco  
to CI@house

# 1068 - tap - 1826 S. Blukly - 5-17-50 - Wichita P.U.C.  
# 7167 - tap - 1856 S. Battini - 1-22-52 - Richard La Fay, Jr. (5+59.2)  
# 6517 - tap - 1845 S. Pinecrest - 9-23-53 - Reynolds P.U.C.  
# 17956 - 1921 S. Pinecrest 3-17-87 NIC -