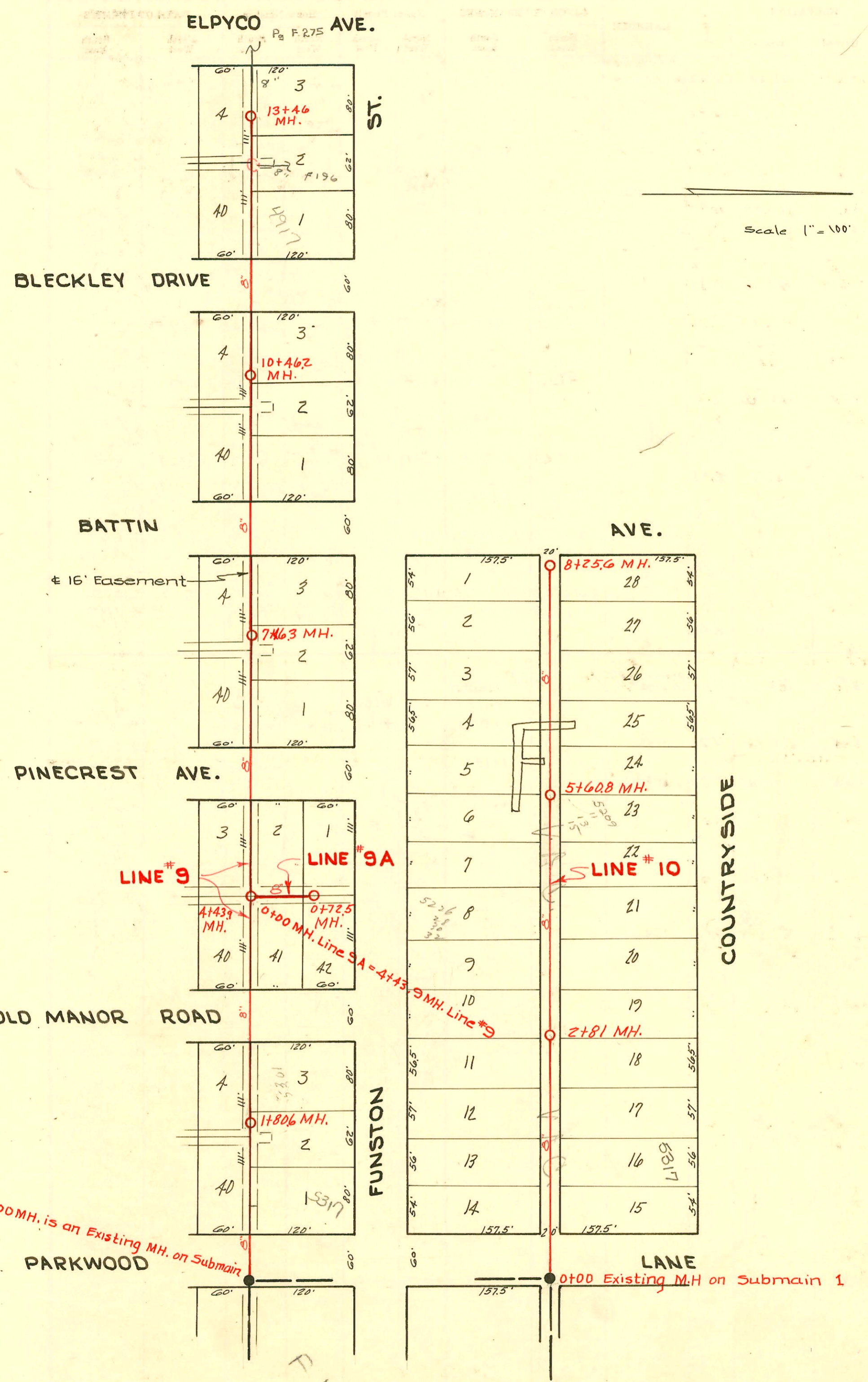


SERVICE RECORD CONSTRUCTION RECORD



5/6

P 191

CONSTRUCTION RECORD

SERVICE RECORD

STATION	ELEVATION		Depth	MANHOLE	4-INCH "Y" BRANCHES		No. of Permit		House Number		DATE OF PERMITS	
	Ground	Grade			North West	South East	North West	South East	North West	South East	North West	South East
0+00	139.8	128.00	12.08	0+00=43+82 on Submain								
1+00	139.2	128.40	11.09		0+88.0		#689		5317 E. Junction		4-22-50	
1+80.6	139.3	128.72	10.79	1+80.6	1+38.3		#688		5311 E. Junction		4-22-50	
2+00	139.4	128.80	10.88		2+16.6		076555 #695		5301 E. Junction		2-25-50 4-22-50	
3+00	139.1	129.20	10.15									
4+00	141.1	129.60	11.76									
4+43.9	141.9	131.00	13.39 in 11.16 out	4+43.9								
5+00	144.6	131.23	13.62									
6+00	144.6	131.63	13.24		6+41.5		#694		5117 E. Junction		4-22-50	
7+00	145.3	132.03	13.51		7+12.4		#693		5111 E. Junction		4-22-50	
7+46.3	145.9	132.20 134.10	13.95 in 12.05 out	7+46.3	7+74.1		#692		5101 E. Junction		4-22-50	
8+00	145.2	134.32	11.10									
9+00	145.5	134.72	11.02		9+20.4 +95.3		#1139 #1138		5019 E. 5011 E. Junction		5-24-50 5-24-50	
10+00	146.0	135.12	11.13									
10+46.2	146.3	135.30	11.28	10+46.2	10+58.0							
11+00	146.9	135.52	11.67									
12+00	147.6	135.92	11.95		12+03.6 +76.5		#1592 #1591		4917 E. 4911 E. Junction		7-12-50 7-12-50	
13+00	148.2	136.32	12.10		13+36.7		#1590		4901 E. Junction		7-12-50	
13+46.0	148.4	136.50	12.16	13+46.0								
0+00	142.2	130.00	12.66	0+00=4+43.9 in Line 9	Y West 0+11.8 +63.5	Y East 0+08.8 +60.5	#460 #691	#4497 #690	1808 R. Demarcat 1802 E. Junction see below	1507 E. 1801 E. Junction	3-19-52 4-22-50	4-30-51 4-22-50
0+72.5	143.2	130.41	13.00	0+72.5								
0+00	141.1	130.00		0+00=47+27 Line #1	Y North 0+84.9 +98.9	Y South 0+87.9 +116.0 +98.9	#500 #501 #502	#514 #515 #502	1717-19-21-25 30 Parkwood see below 5317-19-21-25 5309-11-13-15 Countryside	1725-27-29-31 30 Parkwood see below 5318-20-22-24 5309-11-13-15 Countryside	4-13-50 4-13-50 4-13-50	4-13-50 4-13-50 4-13-50
1+00	141.2	130.73	10.72		4" SCH 40 - 40 +98.9		2003-0003 see below #501 #502				1-3-53 4-13-50	4-13-50
2+00	142.0	131.46	10.79									
2+81	143.2	132.04	11.42	2+81	2+29.7	2+01.9 +32.7	#503 #503	#516 #517	5310-12-14-16 E. Junction 5301-3-5-7 Countryside	5302-4-6-8 E. Junction	4-13-50 4-13-50	4-13-50 4-13-50
3+00	143.0	132.19	11.08		3+15.7 +43.0	3+18.7 +46.0	#504 #505	#518 #519	5241-43-45-47 Countryside 5233-35-37-39 Countryside	5244-44-46-48 E. Junction 5234-36-38-40 E. Junction	4-13-50 4-13-50	4-13-50 4-13-50
4+00	144.1	132.92	11.44		4+24.0 +55.0	4+27.0 +58.0	#506 #507	#521 #521	5225-27-29-31 Junction 5247-19-21-23 Countryside	5218-20-22-24 E. Junction	4-13-50 4-13-50	4-13-50 4-13-50
5+00	144.1	133.65	10.65		5+38.6 +47.9	5+41.6 +50.9	#508 #508	#522 #523	7052 5209-11-13-15 Countryside	5210-12-14-16 E. Junction 5202-4-6-8 E. Junction	11-23-50 4-13-50	4-13-50 4-13-50
5+60.8	144.5	134.09	10.61	5+60.8								
6+00	144.5	134.38	10.37		6+52.6 +77.0	6+55.6 +80.0	#510 #511	#524 #525	5125-27-29-31 Countryside 5117-19-21-23 Countryside	5126-28-30-32 E. Junction 5118-20-22-24 E. Junction	4-13-50 4-13-50	4-13-50 4-13-50
7+00	145.5	135.11	10.61		7+67.5 +88.0	7+70.5 +91.0	#512 #513	#526 #527	5109-11-13-15 Countryside 1202-4-6-8 J. Ballen	5110-12-14-16 E. Junction 1720-24-28-30 J. Ballen	4-13-50 4-13-50	4-13-50 4-13-50
8+00	147.2	135.84	11.65									
8+25.6	147.5	136.02	11.73	8+25.6								

Line # 9

Line # 9A

Line # 10

2003-0003 - 5317 Country side - 1/3/03 McClung - 4" SCH 40 170W CO tied to clay pipe 16' W of MH 0+00

#1137 - Jap - 5001 E. Junction - 5-24-50 - Simmons P. Co.
 #520 - Jap - 5226-28-30-32 E. Junction - 4-13-50 - Wichita O. Co. (4+08.4)
 (P) #509 - Jap - 5201-3-5-7 - Countryside - 4-13-50 - Wichita O. Co. (5+63.8)