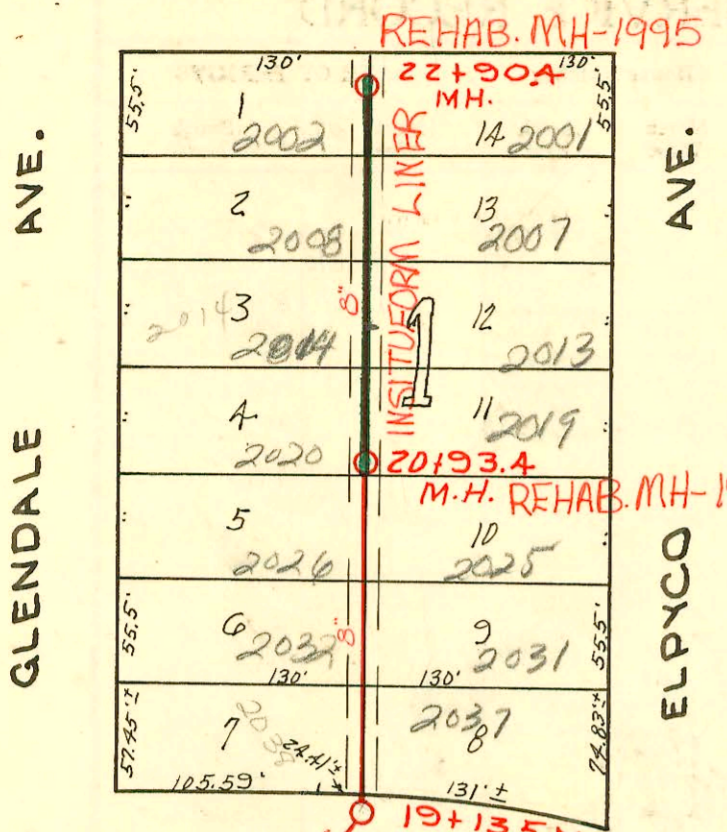


SANITARY SEWER RESPONSE PLAN
 PHASE IA
 PROJ. NO. 468-82470 (623124)
 BUILT BY INSITUFORM PLAINS, INC.
 BOOKED 3-1-96 FROM AS BUILTS

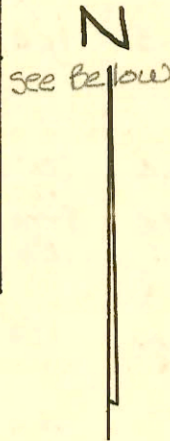
F-202 A

MOUNT VERNON ROAD



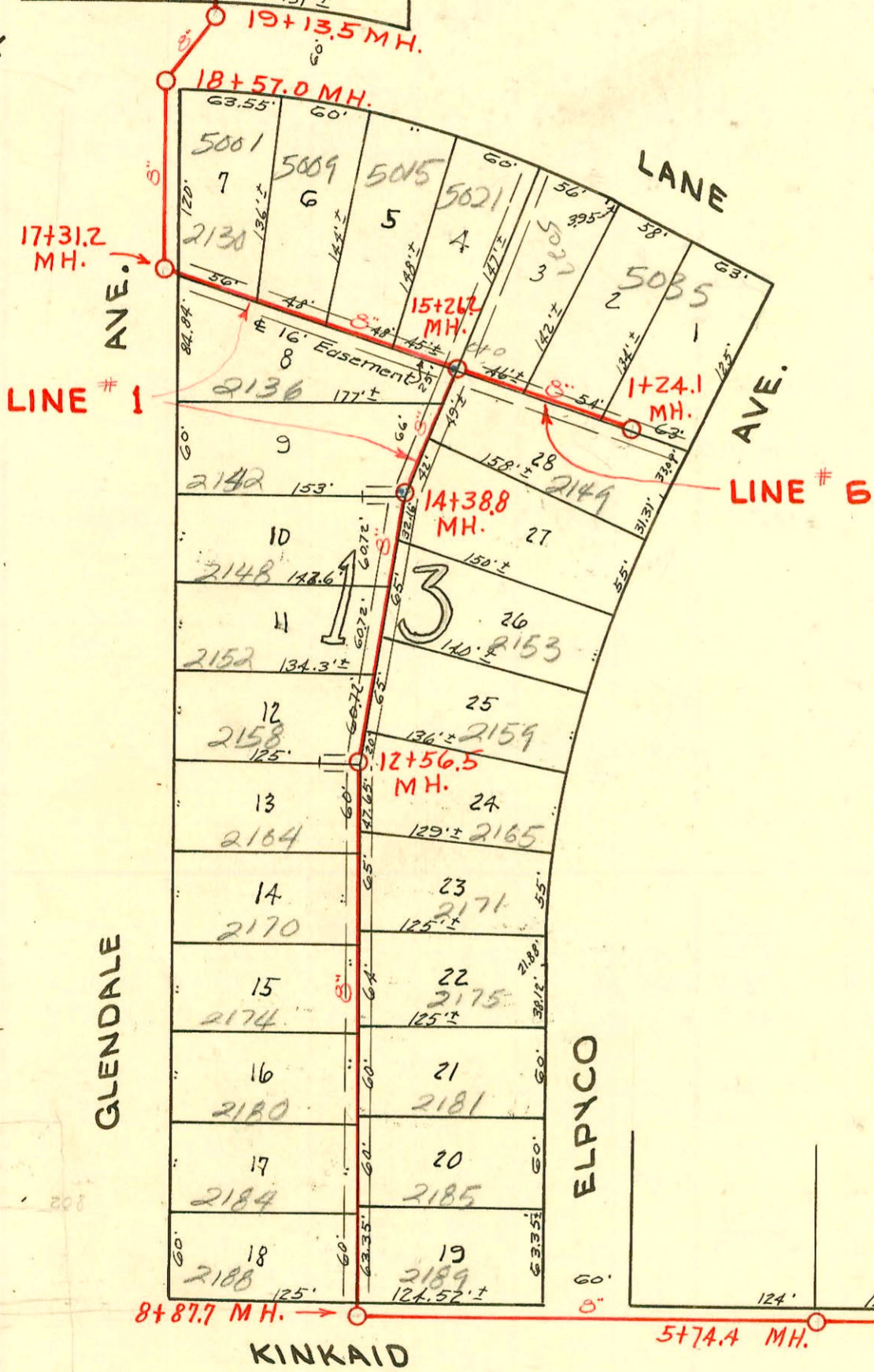
RECONNECTIONS

STA.	ADDRESS	DIRECTION
22+67.6	2002 S. Glendale	West
22+65	2001 S. Elpyco	East
22+22.8	2008 S. Glendale	West
22+19.7	2007 S. Elpyco	East
21+68.9	2014 S. Glendale ^R	West
21+65.6	2013 S. Elpyco	East
21+15	2020 S. Glendale	West
21+12.5	2019 S. Elpyco	East



Scale 1"=100'

LARRY



GLENDALE

ELPYCO

PINECREST

OLD MANOR ROAD

KINKAID

LINE # 1

ST. 0+00 MH. Existing MH. on Submain

2002-02542- 9/17/02- 2014 S Glendale- Shallow- City repair 72' Ab of MH 20+93.4(21+68.9) 4" PVC
 HWIN CO, W22, 30' PK Pipe, HWIN CO

1/3

LAT. 5, DIST. 1, WAR INDUSTRIES SEWER
 CITY OF WICHITA, KANSAS - 1950
 W. B. CARTER
 PROJECT NO. C 20- A
 Book # M 13

CONSTRUCTION RECORD

SERVICE RECORD

Line # 1

STATION	ELEVATION		Depth	MANHOLE	4-INCH "Y" BRANCHES		No. of Permit		House Number		DATE OF PERMITS	
	Ground	Grade			North West	South East	North West	South East	North West	South East	North West	South East
0+00	122.3	115.67	6.91	Existg. MH on Submain								
1+00	124.2	116.07	8.37									
2+00	127.2	116.47	10.93									
2+78	129.0	116.79 120.62	12.47 in 8.67 out	2+78								
3+00	129.8	120.70	9.38									
4+00	131.4	121.10	10.59									
5+00	133.4	121.50	12.10									
5+74.4	134.8	121.80 124.79	13.29 in 10.30 out	5+74.4								
6+00	135.9	124.89	11.28									
7+00	138.3	125.29	13.22									
8+00	139.2	125.69	13.80									
8+87.7	139.1 139.2	126.04 126.21	13.31 in 13.22 out	8+87.7								
9+00	139.1	126.28	13.06									
					9+07.4 +68.5	9+04.4 +65.5	#4603 #4602	#4217	2188 S. Glendale 2184 S. Glendale	2185 Ellyco	5-8-51	3-26-51
10+00	138.9	126.68	12.46		10+27.5 +87.7	10+24.5 +84.7	#4601 #4600	#4215	2180 S. Glendale 2174 S. Glendale	2181 S. Ellyco 2175 R. Ellyco	5-8-51 5-8-51	10-22-91 3-26-51 4-5-01 3-26-51
11+00	137.9	127.08	11.08									
					11+51.7	11+48.7	#4599	#4214	2170 S. Glendale	2171 Ellyco	5-8-51	3-26-51
12+00	137.4	127.48	10.19		12+06.2 12+68.2	12+18.8	#4598 #4597	#4213	2164 S. Glendale 2158 S. Glendale	2165 Ellyco	5-8-51	3-26-51
12+56.5	137.5 137.6	127.70	10.03 in 10.14 out	12+56.5	12+84.2		#4119		2159 Ellyco			3-20-51
13+00	138.0	127.88	10.36		13+27.2	13+51.2	#4596	#4118	2152 S. Glendale	2153 Ellyco	5-8-51	3-20-51
					13+87.4		#4595		2148 S. Glendale		5-8-51	
14+00	139.0	128.28	10.99		14+18.6		#4117		2149 Ellyco			3-20-51
14+38.2	139.5	128.44	11.34 in 11.32 out	14+38.2	14+49.5		#4594		2142 S. Glendale		10-11-51 10-6-51	5-8-51
					14+89.2							
15+00	140.4	128.68	11.95		15+35.4 +85.5	15+42.4	#4098 #4097		5031 Larry 5015 Larry		3-15-51	3-15-51
15+26.3	140.5	128.99	11.99	15+26.3								
16+00	141.1	129.28	12.11		16+31.7 +81.2		#4096 #4095		5029 Larry 5001 Larry		3-15-51	3-15-51
17+00	142.2	129.68	12.82		17+31.2							
17+31.2	142.5	129.81 129.99	12.91 in 12.80 out	17+31.2								
18+00	143.1	130.29	13.03		18+57.0							
18+57.0	143.6	130.52 130.72	13.31 in 13.18 out	18+57.0								
19+00	143.5	130.89	12.86		19+13.5	19+30	#834	#871	2038 S. Glendale	2037 Ellyco	5-2-50	5-6-50
19+13.5	143.6	130.94	12.87 in 12.82 out	19+13.5	19+27 +97.2	19+30 +94.2	#1054		2031 Ellyco			5-15-50
20+00	143.9	131.29	12.83		20+49.1	20+46.1	#835	#7053	92-28627 2026 S. Glendale	2025 A Ellyco	5-2-50	2-28-92 5-16-50
20+93.4	143.8	131.67	12.40	20+93.4								
21+00	143.7	131.69	12.29		21+09.2 +65.5	21+06.9 +62.5	#837 #838	#841	93-114137 93-128447 2020 S. Glendale 2014 S. Glendale	2019 R Ellyco 20131 Ellyco	5-2-50	7-6-93 5-19-93 5-16-50 5-2-50
22+00	144.2	132.09	12.40		22+20.2 +65.1	22+17.2 +62.1	#839 #840	#842 #843	2008 S. Glendale 2002 S. Glendale	2007 B Ellyco 2000 Ellyco	5-2-50	5-2-50 5-2-50
22+90.4	144.9	132.45	12.74	22+90.4								

Line # 6

0+00	140.7	128.92	12.05	0+00=15+26.2 in Line #1	Y North		#4137 4115		5027 S. Lawrence		3-20-51	
1+00	140.1	129.30	11.06		0+07.5 +52.8							
1+24.1	140.1	129.40	10.99	1+24.1								

2006-00490 - 2130 S Glendale, 4"sch 40, 50' SE ymt, (1)22H, (2)22V, basement - Padgett Excavation 2-22-00

2001-00779-4/5/01-2175 S ELLYCO - AJ Neal - 4"sch 40 - ON MSMT - Ferroc to clay 1' from main, Ferroc to CI at house, 2H 22

835 - Tap - 2032 S. Glendale - 5-2-50 - Broder Pelly Co.

4100 - Tap - 2143 Ellyco - 3-15-51 - Frederick Pelly Co.

4116 - Tap - 5035 Larry Lane - 3-20-51 - Frederick Pelly Co.

4099 - Tap - 2136 S. Glendale - 3-15-51 - Frederick Pelly Co.

4218 - Tap - 2189 Ellyco - 3-26-51 - Frederick Pelly Co.