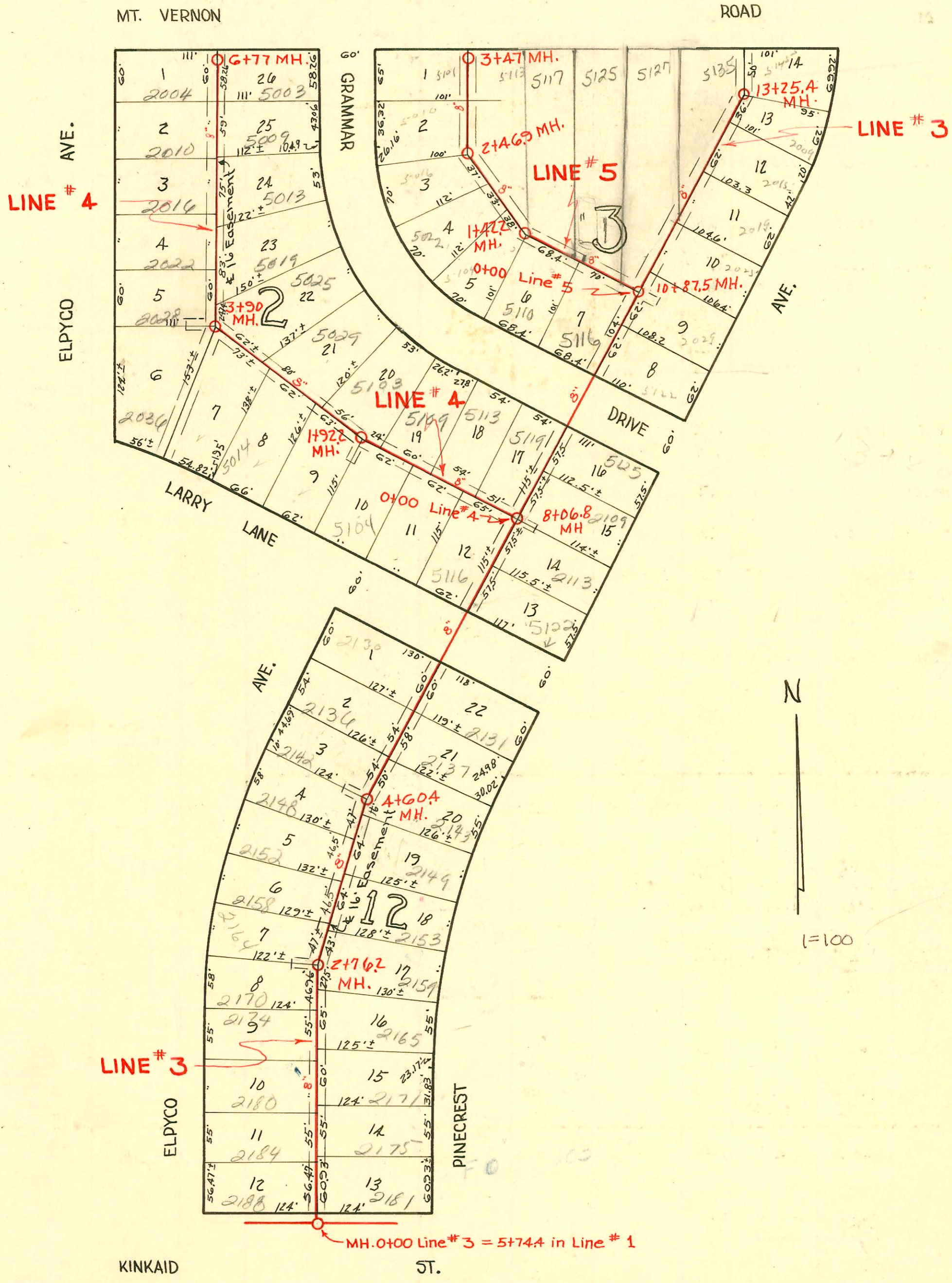


CONSTRUCTION RECORD
SERVICE RECORD



2003-00566 3/4/03 5125 E Mt Vernon - H/M - 4" PVC, 2 twin eq, 1V45, 2H45, 1-wye come off main -
 NOTE 3/4/03 Spoke to Al Henning who was called in on the job by Larry (H/M) He said he tied onto
 clay aprx 2' from main. He saw 2 pipes (old tap 68' NW of MH 0+00 [0+68] looked good, saw no
 roots in pipe so he did not call SWR maint) Inspector Young said all he saw was concrete. 2
3
 2002-01353-5/14/02-5116 Grammar Dr - clear water ex - Predco Saddle 20' W of MH 0+00 (0+00) 4" Sch 40, 2H45
 2000-00093-11/3/00-2152 S Elpyco - Padgett EX - 4" PVC city wye repair 4" Predco 80's of MH 4+60.4 (3+20.4) 1V45

