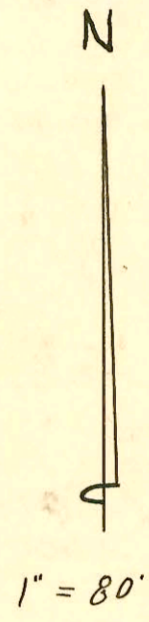
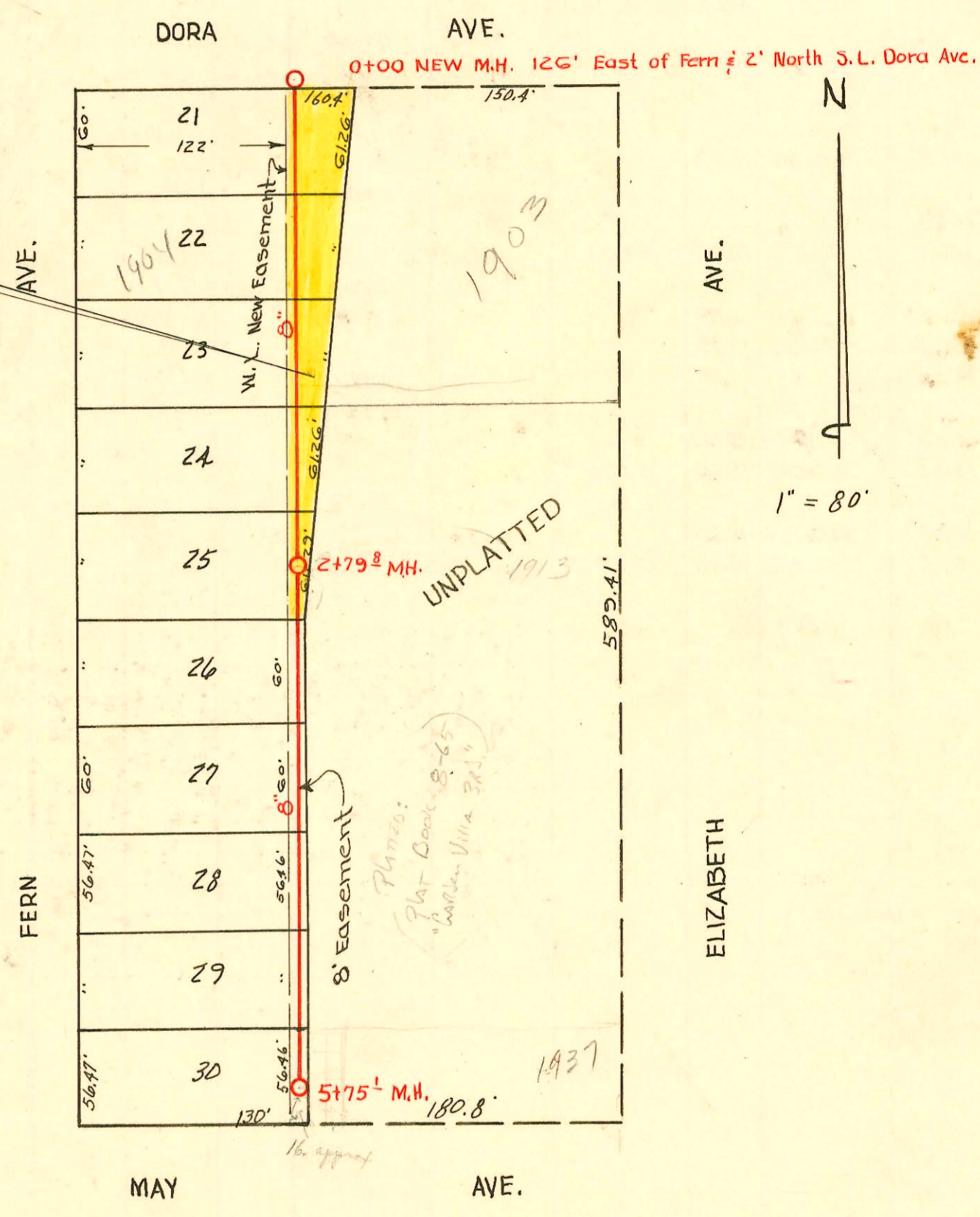


LAT. M, S.S. NO. 8
 Eugene Hensley Const. Co.
 Private Job, Book #70, C.H.M.
 Aug. 1, 1951

EASEMENT # 2434, Dated June 5th, 1950.
 From E.S. Mendenhall and Beulah W. Mendenhall.
 All of Lots 21, 22, 23, 24, and 25, Fern Ave.,
 Second Garden Villa Addition to Wichita,
 Sedgewick County, Kansas, except the west
 one hundred twenty-two (122) feet of
 said lots.



Lat. M, Dist. E, S.S. # 21
 City of Wichita, Kansas
 L. K. White City Engineer
 M. K. Eby Contractor
 Proj. No. C 20-25, 1950

CONSTRUCTION RECORD

SERVICE RECORD

LAT. M. DIST. E. # 21

LAT. M. S.S.# 8

STATION	ELEVATION		Depth	MANHOLE	4-INCH "Y" BRANCHES		No. of Permit		House Number		DATE OF PERMITS	
	Ground	Grade			North West	South East	North West	South East	North West	South East	North West	South East
0+00	105.0	98.21	6.79	0+00 New M.H.	0+35 ¹ +96 ¹		#1807 #1808		1527 1904		7-29-50 7-29-50	
1+00	104.6	98.31	6.29		1+50 ³	1+53 ³	#1809	#2794	1908 1909	S. Elizabeth	7-29-50	10-7-52
2+00	104.8	98.41	6.39		2+04 ³ +63 ²	2+07 ³ +70 ²	#1810 #1811	#4879	1912 1916	S. Elizabeth	7-29-50 7-29-50	1-17-53
2+79 ²	104.8	98.49	6.31	2+79 ²								
3+00	104.6	98.51	6.09		3+19 ⁵ +74 ²	3+22 ⁵ +77 ²	#1812 #1813	#8228 #3314	1920 1924	S. Elizabeth	7-29-50 7-29-50	5-29-53 11-21-52
4+00	103.9	98.61	5.29		4+28 ³ +81 ²	4+31 ³ +84 ²	#1814 #1815		1928 1932		7-29-50 7-29-50	
5+00	102.3	98.71	3.59		5+27 ² +66 ¹	5+30 ² +67 ¹	#65538 #1816	#4062	1936 1936	S. Elizabeth	3-27-78 7-29-50	2-1-53
5+75 ¹	102.0	98.79	3.21	5+75 ¹								
0+00	104.28	100.30	3.80	0+00 New M.H.		Y South						
1+00	104.7	100.40	4.30									
2+00	104.5	100.50	3.98					#5587 #5588	1305 1317	S. Elizabeth		8-15-51 8-15-51
2+90.3	105.2 104.9	100.58 100.78	4.63 out 4.14 in	2+90.3	Y West	Y East						
3+00	104.8	100.80	4.03		3+01.5 +10.3		#5589 #5590		1341 1309	S. Elizabeth		8-15-51 8-15-51
4+00	105.00	100.90	4.10		4+03.0 +09.0	4+00	#5592	#5591	1347 1311	S. Elizabeth		8-15-51 8-15-51
4+37.0	105.3	100.93	4.33	4+37.0	4+21.0	4+18.0	#5593	#5594	1335 1323	S. Elizabeth		8-15-51 8-15-51

318 - 2nd - 1921-23 S. Dodge - 3-12-52 - Vaughn Pelly, Co.
 H 4061 - top - 1929 S. Elizabeth - 2-6-53 - Jeff Pelly
 # 4063 - top - 1937 S. Elizabeth - 2-6-53 - Jeff Pelly (5411.3)
 1504 May
 22341 - 1903 S. Elizabeth - 1-5-89 - Repair (Jocum)