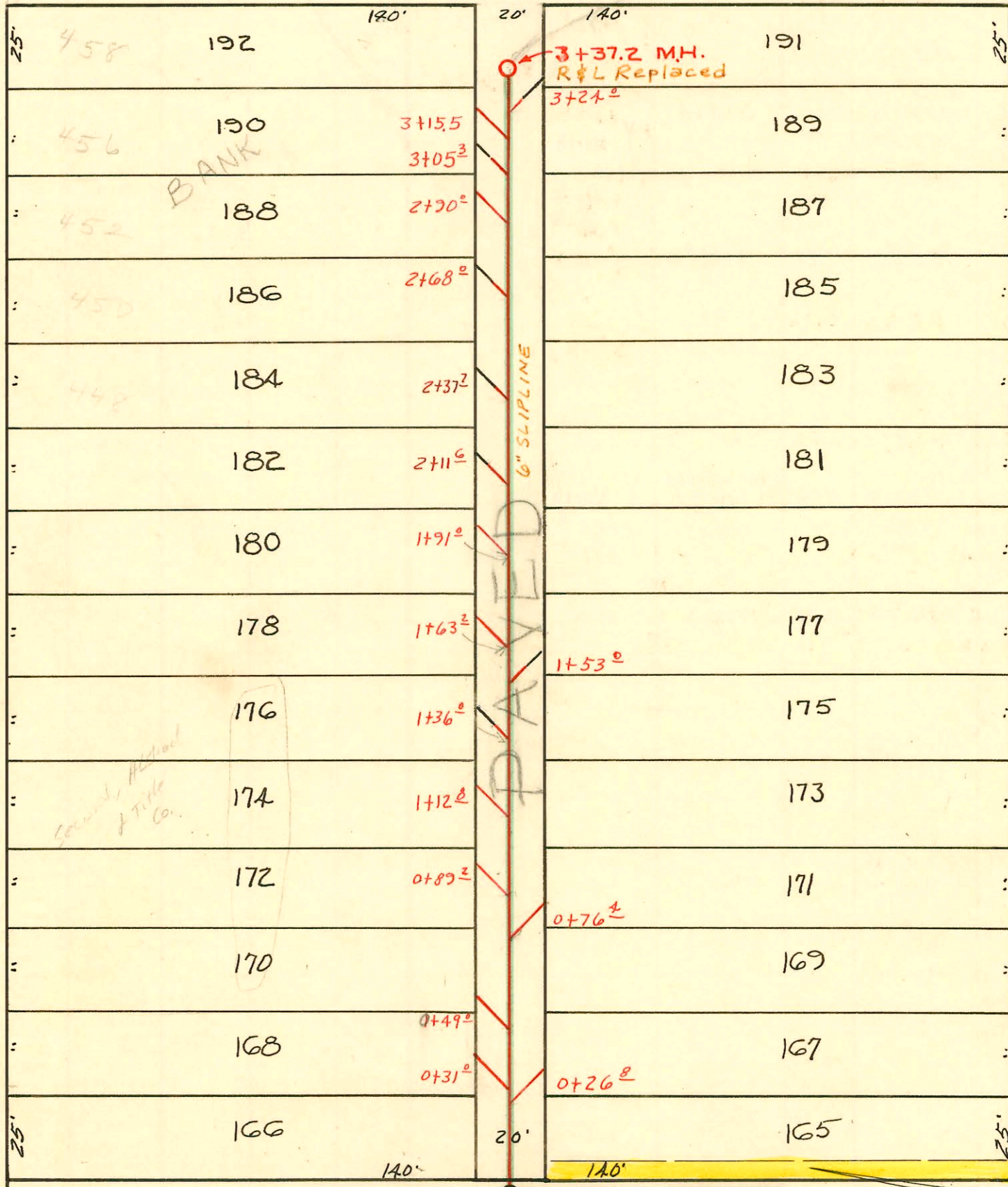


Court House

CENTRAL

AVE.

ST.



Scale 1"=40'

ST.

MARKET

MAIN

Second, Howard & Title Co.

POST OFFICE

EASEMENT #2426, June 14th, 1950, From The Central Christian Church of Wichita, Kansas. South six (6) feet of Lot 165, on Market Street, in Reserve of Greiffenstamm's Original Town, Wichita, Sedgwick County, Kansas.

Sewer Rehab & Mosley Relief Sewer
 Dist. 1 & 20, North of Douglas
 468-80-990-80271-000-000-001
 Built By Stannard Const.
 Booked 7-31-85 From As Built

Reconstruction of Lat. A, Dist. B, S.S. # 1

City of Wichita, Kansas
 L.K. White City Engineer
 W. B. Carter 1950
 Project No. C-29-11
 Book # MZ

CONSTRUCTION RECORD						SERVICE RECORD						
STATION	ELEVATION		Depth	MANHOLE	6" INCH "Y" BRANCHES		No. of Permit		House Number		DATE OF PERMITS	
	Ground	Grade			North West	South East	North West	South East	North West	South East	North West	South East
0+00	112.5	107.87	4.63	0+00 Existg M.H.	End of stub West	End of stub East						
					(4-6" Joints) 0+31	4-6" J. 0+26.8						
					(4-6" Joints) +4.5							
					(4-6" Joints) 0+83.2	4-6" J. 0+76.4						
1+00	112.7	107.97	4.73		(4-6" J.) 1+12.8							
					(2-6" J.) +36.0							
					1+48.3	2-6" J. 1+53.0	C 70287		434 N. MAIN		2-20-79	
					(4-6" J.) 1+63.2							
					4-6" J. +91.0							
2+00	113.0	108.07	4.93		3-6" J. 2+11.0							
					2-6" J. +37.7							
					2-6" J. +68.0							
					4-6" J. 2+90.0							
3+00	113.2	108.17	5.03		2-6" J. 3+05.3							
					4-6" J. +15.5							
						1-6" J. 3+24.0						
3+37.2	113.1	108.21	4.89	3+37.2								
3+29.2	6" Service East											
2+64.2	6" Service West											
1+53.0	6" Service East											
1+18.0	6" Service West											

15964 - 434 N Main - Darrell Williams - 7-31-62 - top (1+24)
 C70303 - 434 N Main - Campbell - 2-21-79 (1+36) 5.0