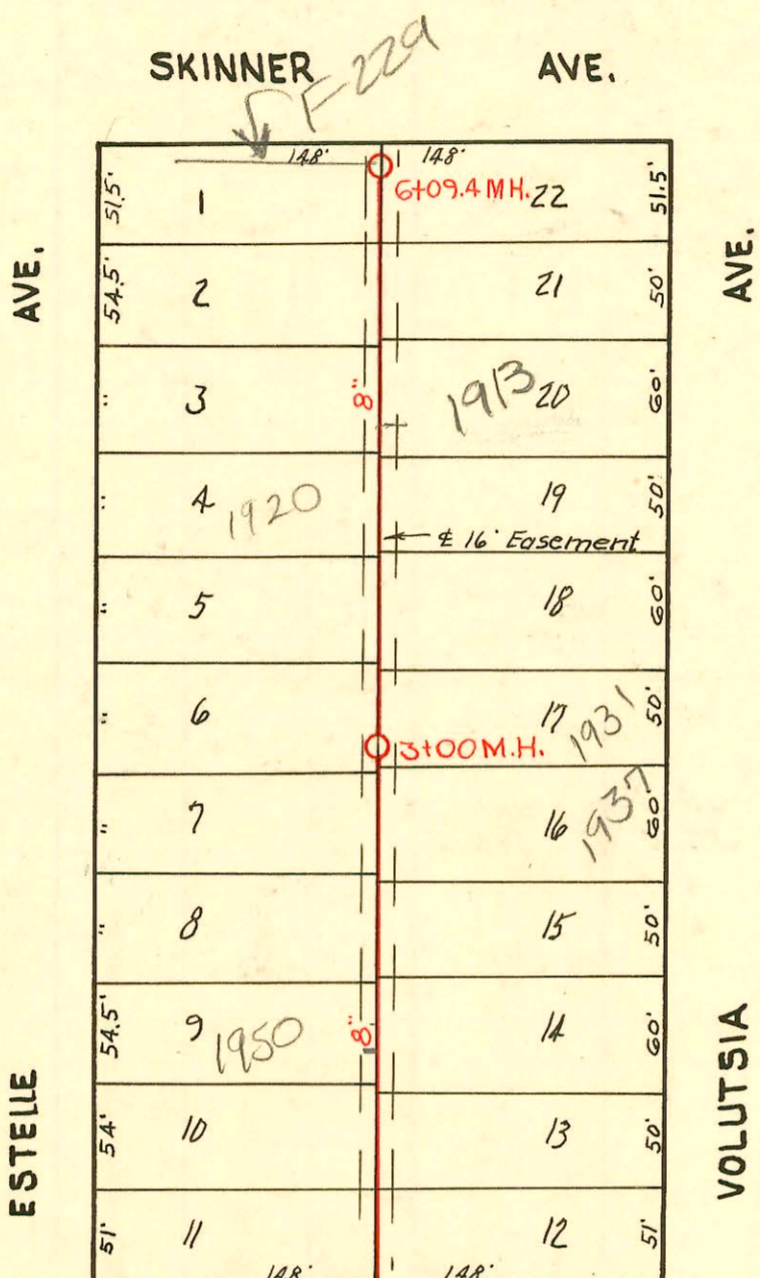


SERVICE RECORD

CONSTRUCTION RECORD

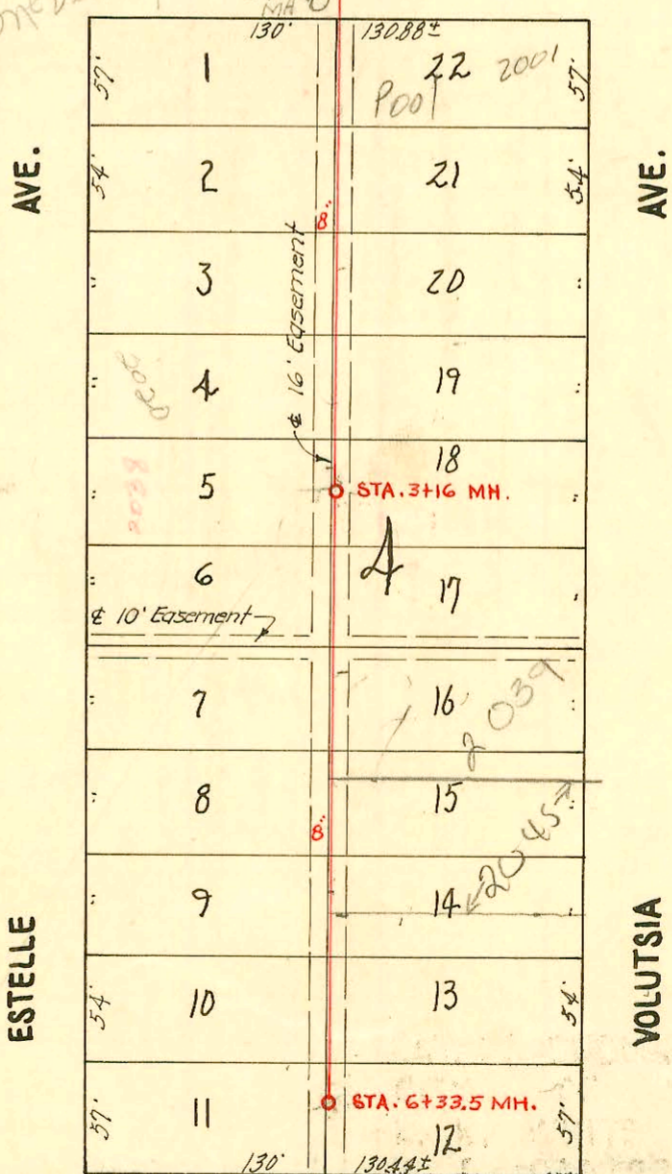
STATE OF CALIFORNIA
COUNTY OF LOS ANGELES
CITY OF LOS ANGELES



STA. 0+00 EXISTING MH. LAT. 1 SUB. Z, #12

STA. 0+00 NEW MH. LAT. 2, D.C. S. #12

LEVY
ST. Watch your wye
Meas.



LAT. 2, DRY CREEK SUBMAIN NO. 2
W. B. CARTER
PRIVATE JOB
BOOK NO. M-16
See 7-34 for lines Between Grove & Estelle

CONSTRUCTION RECORD

SERVICE RECORD

LAT. 1, SUB. Z, #12

LAT. 2, DC.S, #12

STATION	ELEVATION		Depth	MANHOLE	4-INCH "Y" BRANCHES		No. of Permit		House Number		DATE OF PERMITS	
	Ground	Grade			North West	South East	North West	South East	North West	South East	North West	South East
0+00	98.4	92.91	5.49	0+00 Exist'g M.H.	0+34 ^e +73 ^e	0+31 ^e +70 ^e	#1527 #1526	#1523 #1522	1912 S. 1956 S. Estelle	1959 S. Volusia 1953 S. Volusia	7-5-50 7-5-50	7-5-50 7-5-50
1+00	98.1	93.02	5.08		1+43 ¹ +88 ^e	1+40 ¹ +85 ^e	#1614 #1683	#1521 #1520	1950 S. 1944 S. Estelle	1949 S. Volusia 1943 S. Volusia	7-14-50 7-20-50	7-5-50 7-5-50
2+00	98.3	93.12	5.18		2+49 ^e +92 ^e	2+46 ^e +89 ^e	#1786 #1785	#1519 #1518	1938 S. 1932 S. Estelle	1937 S. Volusia 1931 S. Volusia	7-27-50 7-27-50	7-5-50 4-17-50 7-5-50
3+00	98.3	93.22	5.08	3+00 ^e	3+55 ^z	3+52 ^z	#1784	#1517	1925 S. Estelle	1925 S. Volusia	7-27-50	7-5-50
4+00	98.6	93.32	5.28		4+04 ^e +75 ^e	4+01 ^e +72 ^e	#1783 #1684	#1516 #1515	1925 S. 1914 S. Estelle	1919 S. Volusia 1913 S. Volusia	7-27-50 7-20-50	7-5-50 4-11-50 7-5-50
5+00	98.6	93.42	5.18		5+11 ^z +71 ^e	5+14 ^z +68 ^e	#1525 #1524	#1514 #1511	1908 S. 1902 S. Estelle	1907 S. Volusia 1901 S. Volusia	7-5-50 7-5-50	7-5-50 7-5-50
6+00	98.6	93.52	5.08									
6+09.4	98.9	93.53	5.37	6+09 ^z								
0+00	98.8	93.30	5.5	0+00	0+91.2	0+88.2	#4975 #4976	#3118 #2800	2002 S. Estelle	2001 S. Volusia	6-14-51	11-5-52
1+00	98.8	93.40	5.4		1+49.0 2+00.6	1+46.0 1+97.6	#4977 #4978	#2800 #2423	2008 S. 2014 S. Estelle	2007 S. Volusia	6-14-51 11-3-00	9-24-51 10-8-52
2+00	98.6	93.50	5.1		2+57.0	2+54.0	#4979 #4980	#2423 #1129	2020 S. Estelle	2018 S. Volusia	6-14-51 3-9-51	9-8-52
3+00	98.1	93.60	4.5		3+08.5	3+05.5	#4981 #4982	#1129 #7051	2026 S. Estelle	2025 S. Volusia	10-4-51 10-22-51	
3+16	98.1	93.72	4.2	3+16	3+61.0	3+60.0	#4983 #4984	#7051 #7051	2032 S. Estelle	2033 S. Volusia	10-22-51	6-8-54
4+00	97.8	93.80	4.0		4+20.6 +77.7	4+17.6 +74.7	#7051 #7051	#7051 #7051	2038 S. Estelle		1-24-80	
5+00	97.7	93.90	3.8		5+27.0 +85.9	5+26.0 +82.9	#7051 #7051	#4455 #3965	2045 S. Estelle	2045 S. Volusia	3-16-53	3-28-55
6+00	97.7	94.00	3.7		6+28.0	6+25.0	#3899	#4549	2050 S. Estelle	2050 S. Volusia	3-15-55	3-20-53
6+33.5	97.6	94.03	3.6	6+33.5								

2002-01054- 4/11/02-1913 S Volusia-Dutchmans- ITWIN CO, 2 Fernco, replaced 15' pipe @ house, 4" 40 PVC, shallow

#307- Top - 2049 S Volusia- 2-25-54 Common Pllg

#7050- Top - 2050 S. Estelle - 1-14-53 - Wichita Pllg Co.

#6704- Top - 2027 S. Volusia - 10-14-53 - Joe Mc Donald

#608 Top 2038 S Estelle Friedrichs 12-21-58 3+09

#1772 - 1-2-92 - 2039 S. Volusia - Rick Haney top (4+11) 4" SDR 35