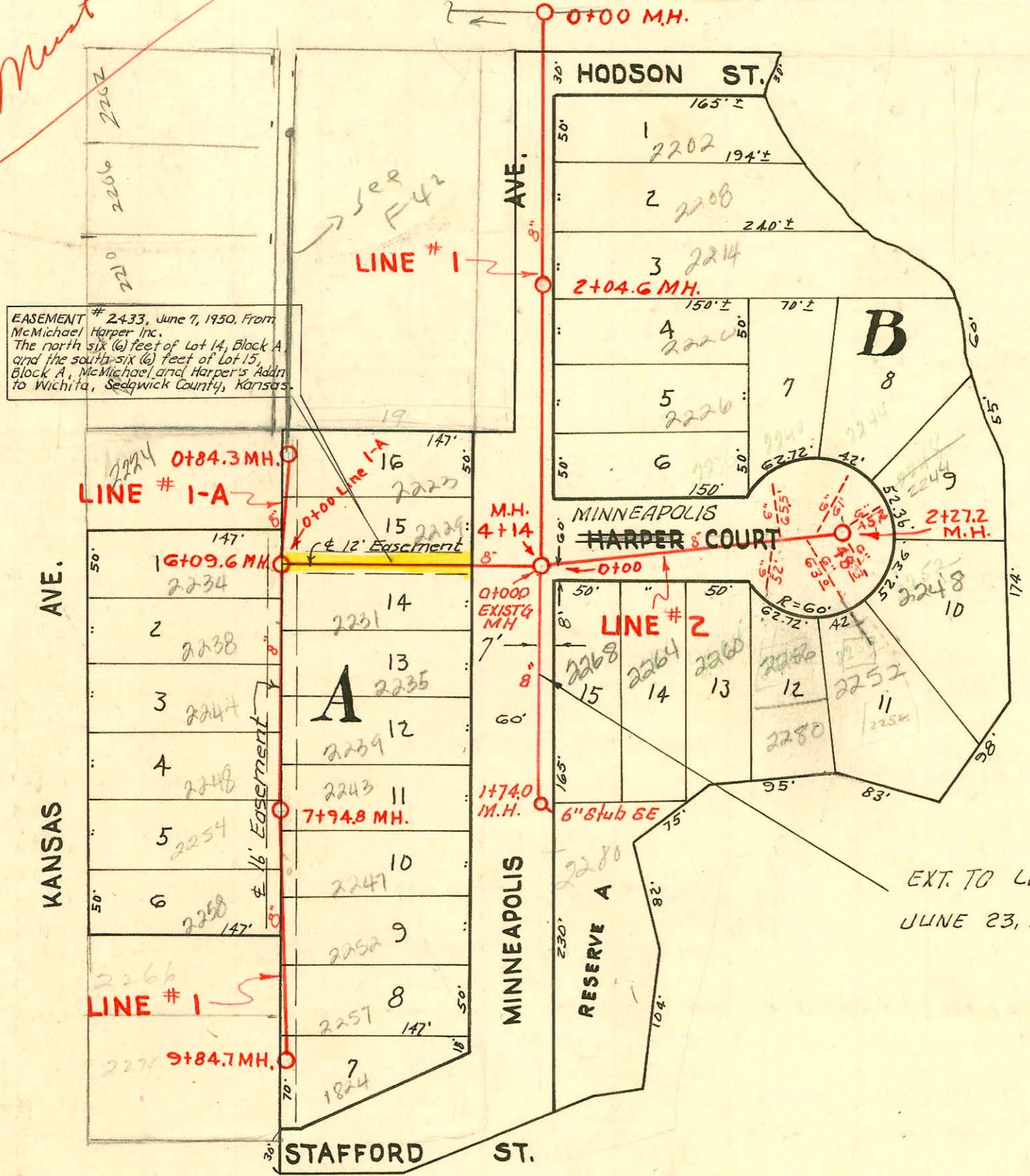


CONSTRUCTION RECORD

Must be trapped

EASEMENT # 2433, June 7, 1950, From McMichael Harper Inc. The north six (6) feet of Lot 14, Block A, and the south six (6) feet of Lot 15, Block A, McMichael and Harper's Addition to Wichita, Sedgewick County, Kansas.



EXT. TO LAT. 17, DIST. B, S. S. NO 20
JUNE 23, 1965, BK NO. K-72
NO PLAN

Must be trapped

LAT. 17, DIST. B, S.S. # 20
CITY OF WICHITA, KANSAS
L. K. WHITE CITY ENGINEER
EUGENE HENSLEY CONST. CO.
PROJECT NO. C20-40, 1950
Book M-13

CONSTRUCTION RECORD

SERVICE RECORD

STATION	ELEVATION		Depth	MANHOLE	4-INCH "Y" BRANCHES		No. of Permit		House Number		DATE OF PERMITS	
	Ground	Grade			North West	South East	North West	South East	North West	South East	North West	South East
0+00	98 ¹	90.09	8.31	0+00 New M.H.								
1+00	98 ²	90.19	8.01			0+94 ⁰	#1632		2202 S. Minneapolis			7-15-50
2+00	98 ⁰	90.29	7.71			1+49 ⁰ +97 ⁰	#1633 #1634		2208 S. Minneapolis 2214 S. Minneapolis			7-15-50 7-15-50
2+04 ⁶	97 ⁸	90.30	7.50	2+04 ⁶		2+45 ⁰ +96 ³	#1635 #1636		2220 S. Minneapolis 2226 S. Minneapolis			7-15-50 7-15-50
3+00	97 ²	90.39	6.61			3+44	#1637		2232 S. Minneapolis			7-15-50
4+00	97.0	90.49	6.51									
4+14	97.0	90.50	6.50 out 6.30 in	4+14								
5+00	98.7	90.79	7.91		Y North	Y South						
6+00	98 ²	90.89	7.31		5+25	5+28	#1639	#1638	2229 S. Minneapolis	2233 S. Minneapolis		7-15-50 7-15-50
6+09.6	98.2	90.90 91.10	7.30 out 7.10 in	6+09.6	Y West	Y East						
					6+13.8 ⁰ 6+55 ⁰ 6+51.3 ⁰ 6+58 ⁰	6+72 ⁰	#1640 #1649 #1650		2234 S. Kansas 2238 S. Kansas 2244 S. Kansas	2235 S. Minneapolis		7-15-50 7-10-95 7-15-50 7-15-50
7+00	96.6	91.19	5.41			7+23 ⁵ 7+50 ⁸	#1641 #1651		2248 S. Kansas	2239 S. Minneapolis		7-15-50 3-15-06 7-15-50
7+94 ⁸	96 ³	91.28	5.02	7+94 ⁸		7+71 ⁵	#1642		2243 S. Minneapolis			7-15-50
8+00	96.4	91.29	5.11			7+98 ²	#1652		2254 S. Kansas			7-15-50
9+00	96.5	91.39	5.11			8+22 ³ 8+49 ⁸ 8+75 ²	#1643 #1653 #1644		2247 S. Minneapolis 2258 S. Kansas 2253 S. Minneapolis			7-15-50 7-15-50 7-15-50
9+84 ²	96.2	91.48	4.72	9+84 ²		9+21 ⁰ +80 ²	#1645 #1655		2260 S. Kansas 2274 S. Kansas	2257 S. Minneapolis		5-4-51 10-1-91 2-6-51
Line # 1-A	0+00	97.2	91.10	6.10	0+00 = 6+09.6 in Line 1-A	0+32 ⁴	#1647		2224 S. Kansas	2233 S. Minneapolis		7-15-50 3-29-02 7-15-50
	0+84 ³	98.0	91.18	6.82	0+84 ³	4+40-00 0+80 ⁰	#1646					
Line # 2	0+00	97.0	90.70	6.30	0+00 = 4+14 in Line #1	Y south				2268 S. Minneapolis		9-11-50
1+00	97.3	90.80	6.50			0+25 +75	#2336 #2337					9-11-50
2+00	97.4	90.90	6.50			1+25	#2338					9-11-50
2+27.2	96.5	90.93	5.57	2+27.2								
End of 6" stubs at lots												
	65 ⁵ - 6"			#7	- 17 ⁵ - E. of W. Line							9-11-50
	61 ⁰ - 6"			#8	- 23 ⁵ - E. of W. Line							9-11-50
	45 ⁵ - 6"			#9	- 19 ⁰ - E. of W. Line							9-11-50
	48 ³ - 6"			#10	- 38 ⁸ - S. of N. Line							9-11-50
	63 ⁰ - 6"			#11	- 27 ² - E. of W. Line							9-11-50
	52 ⁰ - 6"			#12	- 13 ² - E. of W. Line							9-11-50
0+00	113.4	105.20	8.2	0+00.0 Exist'g MH								
1+00	113.2	105.60	7.6									
	112.9	105.96	6.9	1+74 ⁰	6" stub SE		#3755		2280 S. Minneapolis			7-7-65

Line # 1

Line # 1-A

Line # 2

Ext. to Lat. 17, Dist. B, S. S. No. 20

#2442 - Job - 1824 Stafford - 9-22-50 - Cherry Alley Co.
 Keep a 4" dia. pipe - 2200 S. Kansas - Baker - 1-25-57
 #17549 MC 2258 S. Minneapolis 12-30-86 - 4" SOR 35 - Ran this line from Laundry Bldg north through Lot
 2256 and tied into 6" clay tile line 2' N. of Conn for 2256 N. Minneapolis
 Conn to 6" line approved by J. Blaine
 95-10790 7-10-95 2238 N Kansas - Old wye conn at 6+55.3 slo by City TAPCREW
 and new TAP made at 6+51.3. 4" sch 40 PUC. Also City crew repaired
 6" of line with 4" sch 40 for 2237 N Minneapolis