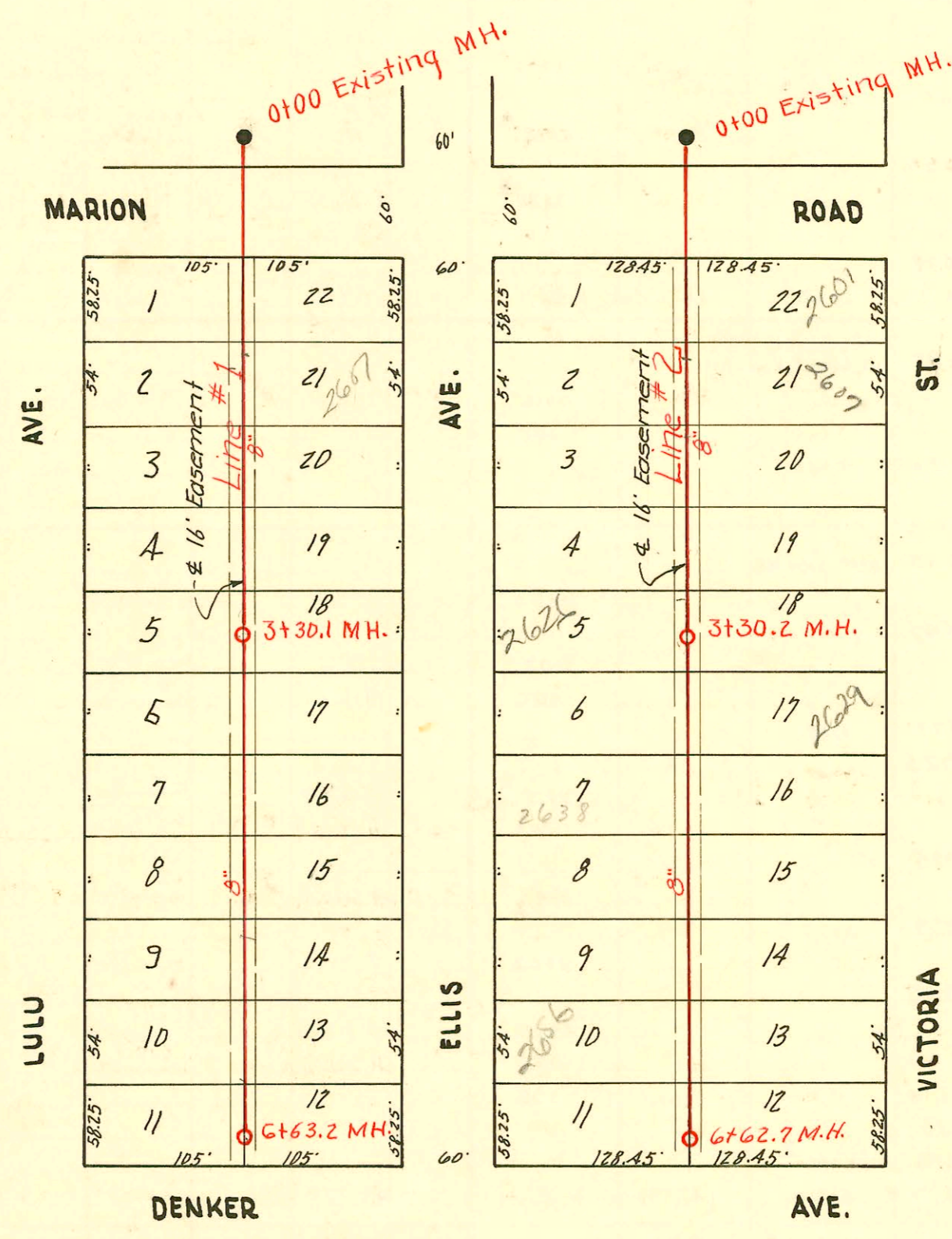


SERVICE RECORD CONSTRUCTION RECORD

6" 4.  
TRAP AREA



6" 4.

Lat 20, Dist. B, SS #20

PRIVATE SANITARY S. (MURRY ADDITION)  
CITY OF WICHITA, KANSAS  
L.K. WHITE CITY ENGINEER  
W. B. CARTER CONTRACTOR  
AUGUST, 1950, BOOK NO. M13

CONSTRUCTION RECORD

SERVICE RECORD

Line #1

Line #2

STATION	ELEVATION		Depth	MANHOLE	4-INCH "Y" BRANCHES		No. of Permit		House Number		DATE OF PERMITS	
	Ground	Grade			North West	South East	North West	South East	North West	South East	North West	South East
0+00	96.1	90.05	6.05	0+00 Existing M.H.	0+88 <sup>z</sup>	0+85 <sup>z</sup>	#2153	10543 #2164	2602 Lulu	2601 Ellen	9-1-50	4-2-84 9-1-50
1+00	95.6	90.15	5.45		4" sch 40 PPG 1+46 <sup>-</sup> +38 <sup>z</sup>	4" sch 40 1+43 <sup>o</sup> +35 <sup>z</sup>	94-116097 #2154	95-113177 #2165	2608 Lulu	2607 Ellen	10-26-94 9-1-50	7-24-95 9-1-50
2+00	95.2	90.25	4.95		2+53 <sup>z</sup>	2+50 <sup>z</sup>	#2155	#2166	2614 Lulu	2611 Ellen	9-1-50	9-1-50
3+00	94.6	90.35	4.25		3+09 <sup>z</sup>	3+06 <sup>z</sup>	#2156	#2167	2620 Lulu	2617 Ellen	9-1-50	9-1-50
3+30 <sup>z</sup>	94.4	90.38	4.02	3+30 <sup>z</sup>	3+64 <sup>z</sup>	3+61 <sup>z</sup>	#2157	#2168	2626 Lulu	2623 Ellen	9-1-50	9-1-50
4+00	94.5	90.45	4.05		4+16 <sup>z</sup> +71 <sup>z</sup>	4+13 <sup>z</sup> +68 <sup>z</sup>	#2158	#2169	2632 Lulu	2629 Ellen	9-1-50	11-13-68 9-1-50
5+00	94.7	90.55	4.15		5+21 <sup>z</sup> +80 <sup>z</sup>	5+18 <sup>z</sup> +77 <sup>z</sup>	#2159	#2170	2638 Lulu	2635 Ellen	9-1-50	9-1-50
6+00	94.1	90.65	4.45		6+35 <sup>z</sup>	6+32 <sup>z</sup>	#2160	#2171	2644 Lulu	2641 Ellen	9-1-50	9-1-50
6+63 <sup>z</sup>	93.8	90.71	3.09	6+63 <sup>z</sup>			#2161	#2172	2650 Lulu	2647 Ellen	9-1-50	9-1-50
							#2162	#2173	2656 Lulu	2653 Ellen	9-1-50	9-1-50
							#2163	#2174	2662 Lulu	2659 Ellen	9-1-50	9-1-50
0+00	94.7	90.42	4.28	0+00 Existing M.H.	0+73 <sup>z</sup>	4" SDR 35 0+87 <sup>z</sup>	#2391	168997 #2184	2668 Lulu	2601 Victoria	9-11-50	1-22-96 9-1-50
1+00	95.4	90.52	4.88		1+45 <sup>z</sup> +57 <sup>z</sup>	1+42 <sup>z</sup> 4" ABS 1+34 <sup>z</sup>	#2175	9275361 #2185 92438187 #2186	2608 Lulu	2607 Victoria	3-28-52 9-1-50	11-15-79 9-1-50 12-3-92 9-1-50
2+00	93.3	90.62	2.68		2+53 <sup>z</sup>	2+50 <sup>z</sup>	#2176	#2187	2620 Lulu	2617 Victoria	9-1-50	9-1-50
3+00	93.4	90.72	2.68		3+08 <sup>z</sup>	3+05 <sup>z</sup>	#2177	#2188	2626 Lulu	2623 Victoria	9-1-50	9-1-50
3+30 <sup>z</sup>	93.9	90.75	3.15	3+30 <sup>z</sup>	3+60 <sup>z</sup>	3+57 <sup>z</sup>	#2178	#2189	2632 Lulu	2629 Victoria	9-1-50	9-1-50
4+00	94.5	90.82	3.68		4+15 <sup>z</sup> +71 <sup>z</sup>	4+12 <sup>z</sup> +68 <sup>z</sup>	#2179	#2190	2638 Lulu	2635 Victoria	9-1-50	9-1-50
5+00	94.6	90.92	3.68		5+24 <sup>z</sup> +79 <sup>z</sup>	5+21 <sup>z</sup> +76 <sup>z</sup>	#2180	#2191	2644 Lulu	2641 Victoria	9-1-50	9-1-50
6+00	94.7	91.02	3.68		6+31 <sup>z</sup>	6+28 <sup>z</sup>	#2181	#2192	2650 Lulu	2647 Victoria	9-1-50	9-1-50
6+63 <sup>z</sup>	94.7	91.08	3.62	6+62 <sup>z</sup>			#2182	#2193	2656 Lulu	2653 Victoria	9-1-50	8-2-81 9-1-50
							#2183	#2194	2662 Lulu	2659 Victoria	9-1-50	9-1-50