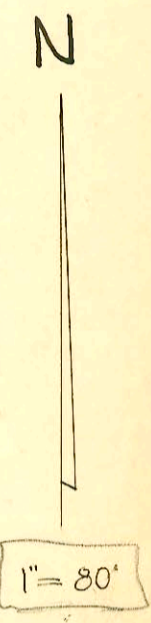
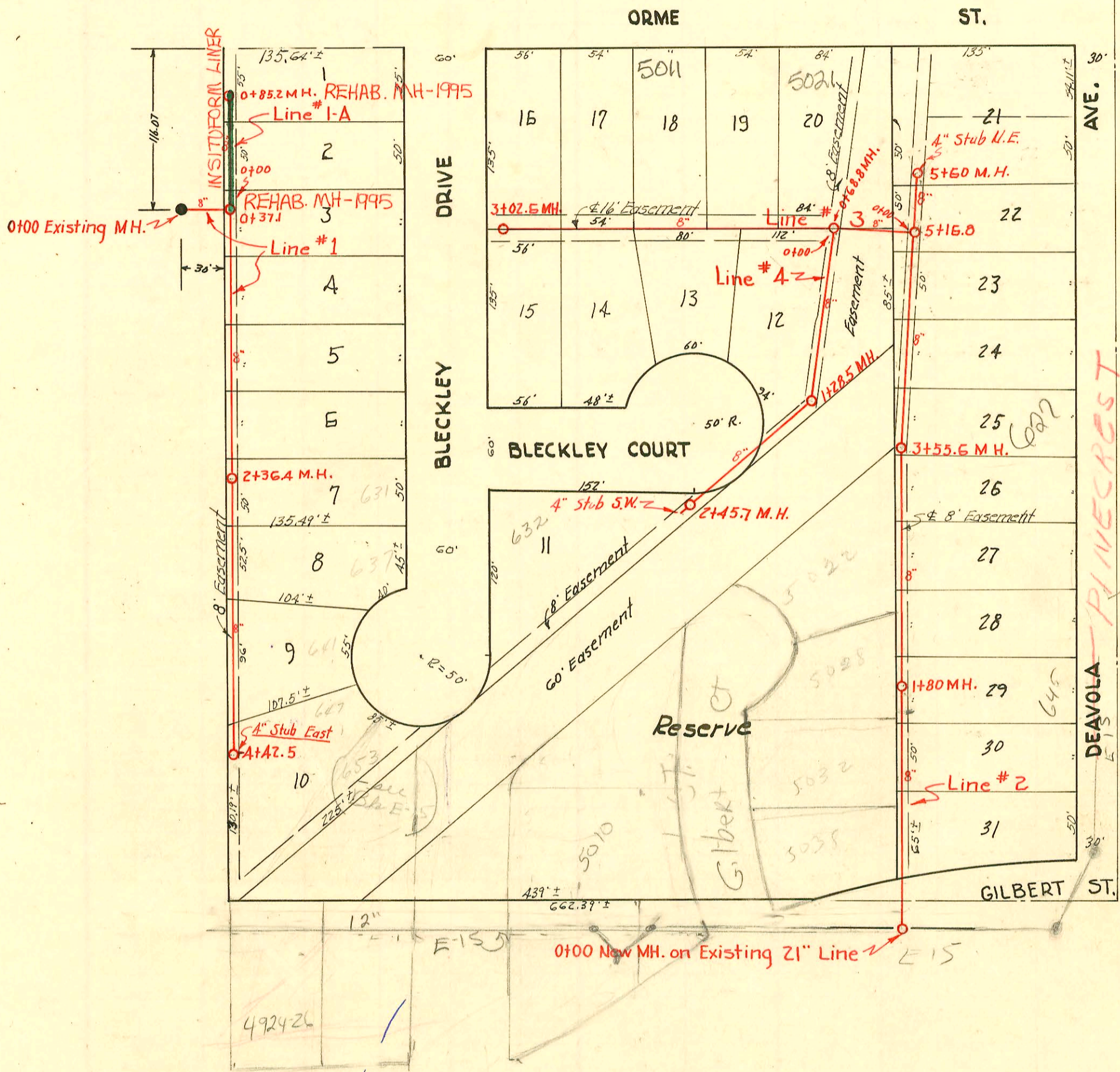


RECONNECTIONS

STA.	ADDRESS	DIRECTION
0+63.8	4949 E. Orme	East
0+17.2	607 S. Bleckley	East

1995 SANITARY SEWER RESPONSE PLAN  
 PHASE IA  
 PROJ. NO. 468-82420 (623124)  
 BUILT BY INSITUFORM PLAINS, INC.  
 BOOKED 2-29-96 FROM AS BUILTS



2000-02341- 10/25/00- 5011 E ORME- McClurgs- 4" SCH40 116.9' E of MH 3102.6 (1+85.7) 2-1 way co, 1 H22  
 Ferned 12' from main, Fernco to East Iron @ house  
 2002-01385- 5/17/02- 5021 E Orme- Always Pibg- 4" PK40 Replaced all but lower 2', 1/4" fall, shallow, 1V22, existing co, alley

LAT. 50, D. C. S., S. S. # 12  
 CITY OF WICHITA, KANSAS  
 W. B. CARTER CONTRACTOR  
 L. K. WHITE CITY ENGINEER  
 AUGUST 1950, PROJ. NO. C20-39  
 Book # MH4

CONSTRUCTION RECORD

SERVICE RECORD

STATION	ELEVATION		Depth	MANHOLE	4-INCH "Y" BRANCHES		No. of Permit		House Number		DATE OF PERMITS	
	Ground	Grade			North West	South East	North West	South East	North West	South East	North West	South East
Line #1 0+00	154.2	145.91	8.29	Existing M.H.								
0+37	153.6	145.95 out 146.15 in	7.67 7.45	0+37					645 Bleekley			1-13-51
1+00	152.6	146.21	6.39						6175 Bleekley 6215 Bleekley			1-13-51
2+00	153.8	146.31	7.49						6275 Bleekley			1-13-51
2+36	153.9	146.35	7.55	2+36					6315 Bleekley			1-13-51
3+00	153.4	146.41	6.99									
4+00	153.3	146.51	6.79									
4+42	152.7	146.55	6.15	4+42	(4" Stub East)				647 Bleekley			10-26-65
Line #1-A 0+00	153.6	146.15	7.45	0+00=0+37 in Line #1					6018 Bleekley			1-13-51
0+85	155.1	146.24	8.86	0+85					6018 Bleekley			7-3-51
Line #2 0+00	150.6	139.25	11.35	0+00 New M.H.					655 Deanda			2-23-51
1+00	149.8	139.35	10.45						657 Deanda 645 Deanda			2-23-51
1+80	148.2	139.43	8.77	1+80								9-6-50
2+00	148.7	139.45	9.25									
3+00	148.8	139.55	9.25						641 Deanda			9-6-50
3+55	149.4	139.61	9.79	3+55					635 Deanda			9-6-50
4+00	148.5	139.65	9.85						631 Deanda			9-6-50
5+00	147.5	139.75	7.75						629 Deanda			8-28-50
5+16	146.9	139.77	7.13	5+16					621 Deanda			9-6-50
5+60	146.2	139.81	6.39	5+60	(4" Stub N.E.)				617 Deanda			9-6-50
Line #3 0+00	146.7	139.97	6.73	0+00=5+16.8 in Line #2	Y's North	Y's South						
0+68	145.1	140.04 out 140.24 in	5.06 4.86	0+68					5018 Bleekley 5021 Bleekley 5017 Bleekley 5012 Bleekley 5006 Bleekley 5007 Bleekley 5001 Bleekley			1-31-51 7-3-51 5-17-52 5-26-52 1-20-51 7-3-51 4-9-51 4-9-51
1+00	148.6	140.27	8.33									
2+00	149.7	140.37	9.33									
3+00		140.47										
3+02	150.9	140.47	10.43	3+02								
Line #4 0+00	145.1	140.24	4.68	0+00=0+68.8 in Line #3								
1+00	145.7	140.34	5.36									
1+28	146.1	140.31 out 140.57 in	5.73 5.53	1+28								
2+00	145.9	140.64	5.26									
2+45.7	145.5	140.68	4.82	2+45.7	(4" Stub S.W.)				6328 Bleekley			11-8-52

# 2739 - Sap - 609 Deanda - 10-16-50 - Meyer Olly Co  
 # 4329 - Sap - 637 S. Bleekley - 4-9-51 - Max Henshaw  
 # 3050 - Sap - 5028 Herbert Ct. - 1-27-55 - Callison Pembg.  
 # 3051 - Sap - 5020 Herbert Ct. - 1-27-55 - " "  
 # 3052 - Sap - 5038 Herbert Ct. - 1-27-55 - " "  
 # 3053 - Sap - 5032 Herbert Ct. - 1-27-55 - " "