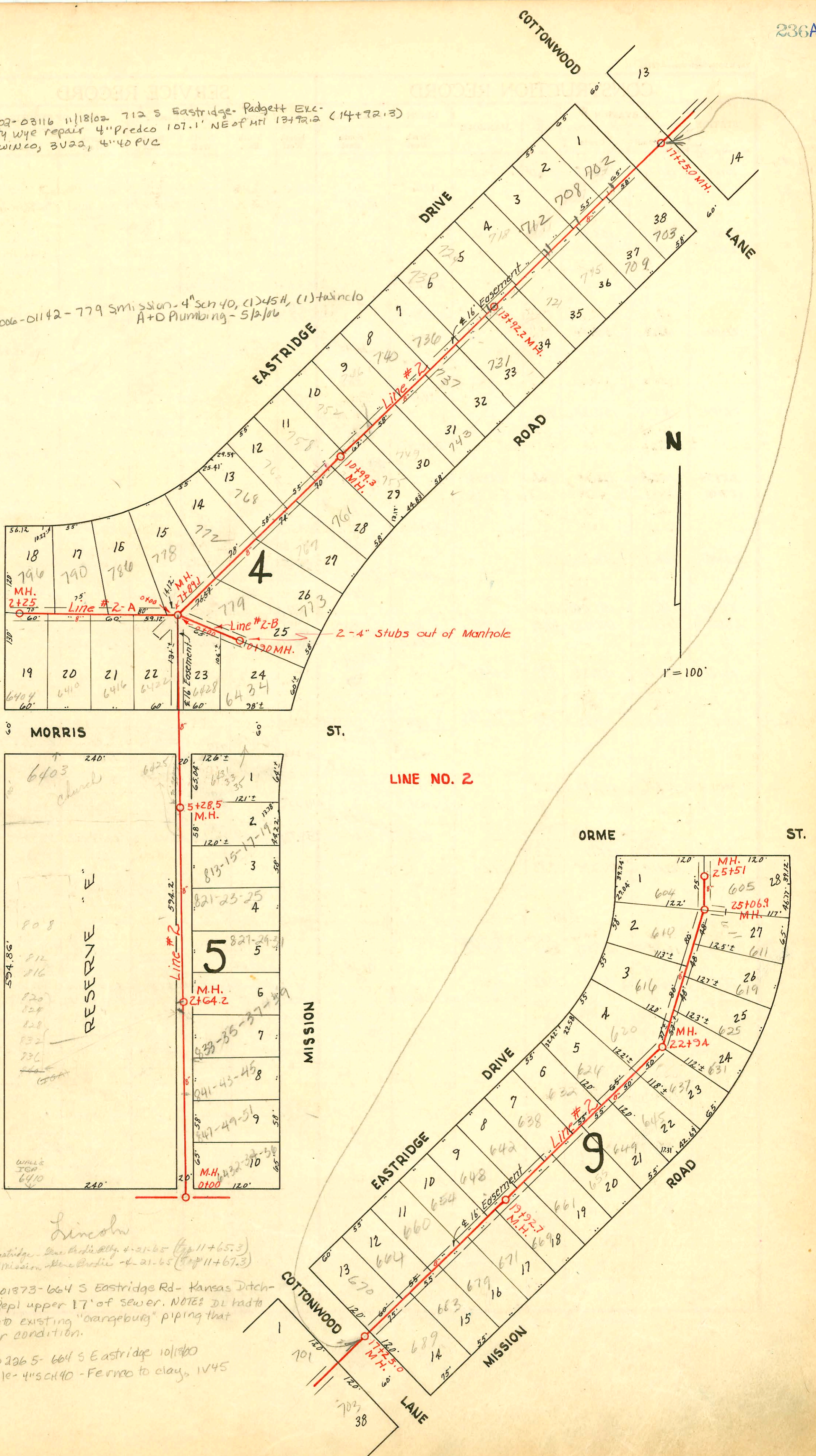


2002-03116 11/18/02 712 S Eastridge- Padgett Exc-  
City wye repair 4" Predco 107.1' NE of MH 13+92.2 (14+92.3)  
1 Twinco, 3V22, 4" 40 PVC

SWR2006-01142-779 S Mission- 4" Sch 40, (1) 45H, (1) twinco  
A+D Plumbing- 5/2/06



808 S. Woodlawn  
Original City of Lincoln (914)

Lincoln

Tap # B3354-746 Eastridge - Line Per Ord. 4-21-65 (Tap 11+65.3)  
Tap # B3353-749 Mission - Line Per Ord. 4-21-65 (Tap 11+67.3)

Rep- 2000-01873-664 S Eastridge Rd- Kansas Ditch-  
4" SCH40- Repl upper 17' of sewer. NOTE: DL had to  
tie back into existing "orangeburg" piping that  
was in poor condition.

Rep- 2000-02265-664 S Eastridge 10/18/00  
Sample- 4" SCH40 - Fernco to clay, 1V45

LINE NO. 2

1" = 100'

CONSTRUCTION RECORD

SERVICE RECORD

Line #2  
Continued

Line #2-A

Line #2-B

STATION	ELEVATION		Depth	MANHOLE	4-INCH "Y" BRANCHES		No. of Permit		House Number		DATE OF PERMITS	
	Ground	Grade			North West	South East	North West	South East	North West	South East	North West	South East
19+00	165.2	154.60	10.60		19+12 <sup>1</sup>	19+52 <sup>0</sup>	#3312	#3313	654 Eastside	671 Mission	12-8-50	11-21-88 9-25-50
19+92 <sup>1</sup>	165.5	154.97	10.53	19+92 <sup>1</sup>	4" SDR 35 19+70 <sup>1</sup>		4 32425 #3313	4 2485	648 R Eastside		3-11-94 12-8-50	
20+00	165.7	155.00	10.70			20+01 <sup>1</sup>	4 2486	667 Mission				9-25-50
					20+23 <sup>8</sup>	+57 <sup>0</sup>	#3314	4 2487	642 Eastside	661 Mission	12-8-50	9-25-50
					20+81 <sup>5</sup>		#3315	4 2487	637 Eastside		12-8-50	
21+00	165.3	155.40	9.90			21+14 <sup>6</sup>	4 2488	655 Mission				9-25-50
					21+33 <sup>0</sup>	+66 <sup>1</sup>	#3316	4 2489	632 Eastside	649 Mission	12-8-50	9-25-50
					+88 <sup>4</sup>		#3317		626 Eastside		12-8-50	
22+00	165.7	155.80	9.90			22+25 <sup>0</sup>	4 2490	645 Mission				9-25-50
					22+51 <sup>0</sup>		#3318	4 2490	629 Eastside	627 Mission	12-8-50	8-23-89 9-25-50
						22+75 <sup>0</sup>	4 2491					
22+9A 23+00	165.8	156.18	9.62	22+9A		23+26 <sup>0</sup>	4 2492	631 B Mission				10-18-88 9-25-50
					23+41 <sup>0</sup>		#3319	4 2493	616 Eastside	655 R Mission	12-8-50	12-22-95 9-25-50
24+00	166.3	156.60	9.70			24+23 <sup>6</sup>	4 2493	610 B Eastside	619 Mission	1-27-89 12-8-50	9-25-50	
						24+26 <sup>6</sup>	#3320	4 2494				9-25-50
						+82 <sup>5</sup>	4 2495					9-25-50
25+00	167.1	157.00	10.10		Y WEST	Y EAST	4 2495					
25+06 <sup>2</sup>	167.1	157.03	10.07	25+06 <sup>2</sup>		25+20 <sup>6</sup>	#3321	4 2496	604 R Eastside	605 Mission	3-2-81 12-8-50	9-25-50
25+51 <sup>0</sup>	167.2	157.21	9.99	25+51 <sup>0</sup>		25+31 <sup>0</sup>						
0+00	159.8	150.39	9.51	0+00 = 7+89.1 in Line #2	Y NORTH	Y SOUTH		#2317	642 E. Mission			9-9-50
						0+13 <sup>2</sup>	#3290	786 Eastside	6416 E. Mission		12-8-50	9-9-50
						+68 <sup>1</sup>	#2311					
1+00	159.0	150.77	8.23			1+08 <sup>5</sup>	#3289	790 R Eastside	6410 E. Mission		12-8-50	9-9-50
						+85 <sup>0</sup>	#3288	4 2310	796 R Eastside	640 E. Mission	12-8-50	9-9-50
2+00	158.4	151.17	7.23									
2+25	158.3	151.27	7.03	2+25								
0+00	160.0	150.37	9.63	0+00 = 7+89.1 in Line #2		0+34 <sup>5</sup>	#2313	642 E. Mission				9-9-50
0+50 <sup>0</sup>	160.8	150.73	10.03	0+50 <sup>0</sup> (2-4" Stubs out Manhole.)	4" SCH 40		#2460	779 Mission	643 E. Mission	see next pg	9-22-50	10/9/00 9-9-50

C 57259 - 665 S Mission - 8-18-76 - Sewer - Repair 21406.7

SERVICE RECORD

CONSTRUCTION RECORD

See drawing for sewer on page 236

Rep-2000-02205-10/9/00-6434 E MORRIS - Boardman - 4" SCH 40 - @ Twinco, @ Kickouts, 1H22, 1H45