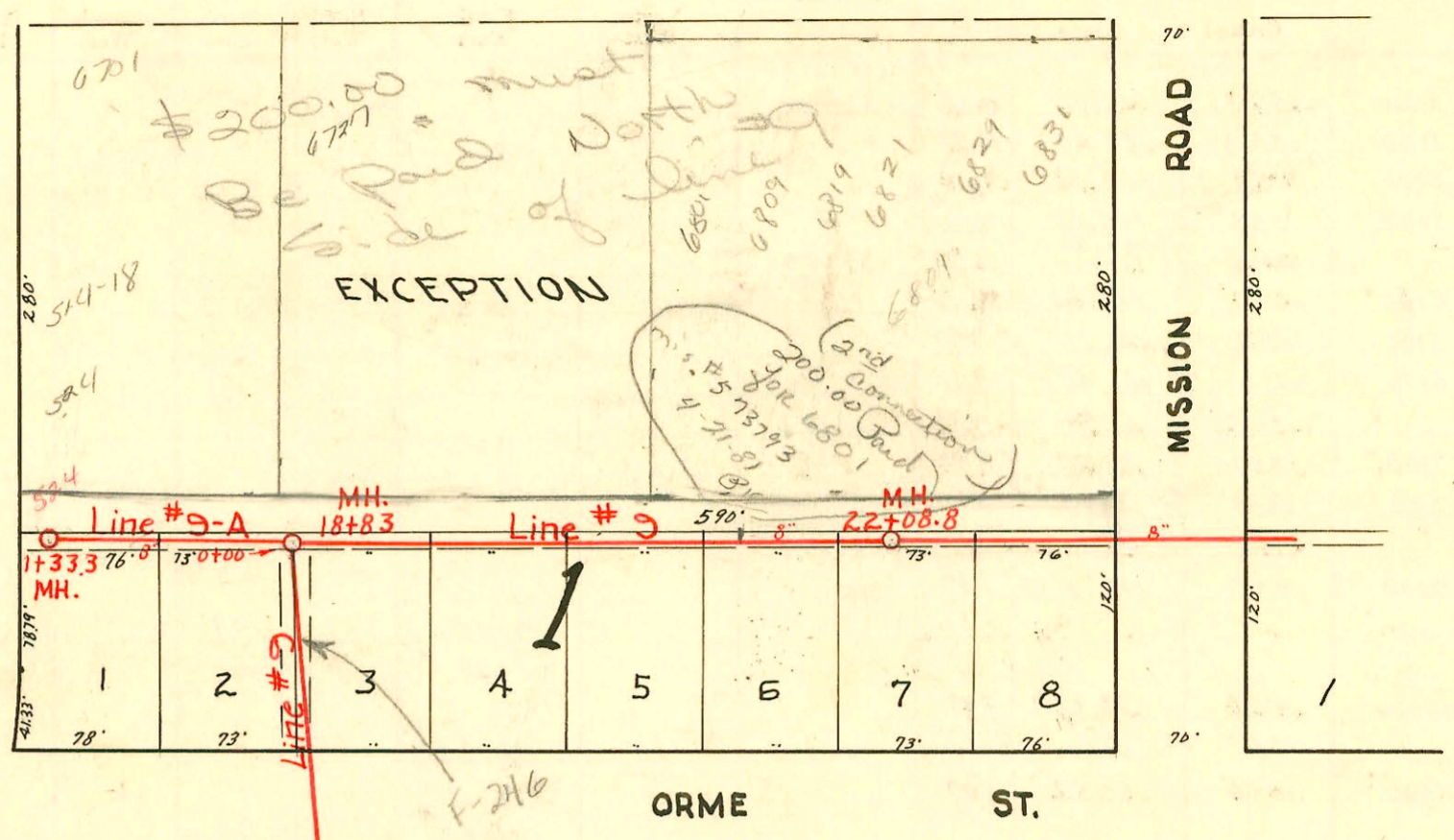
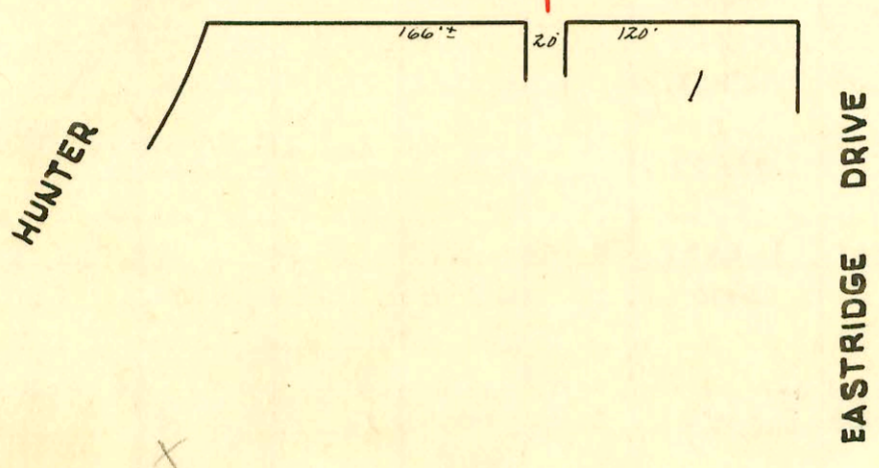


KELLOGG ST.

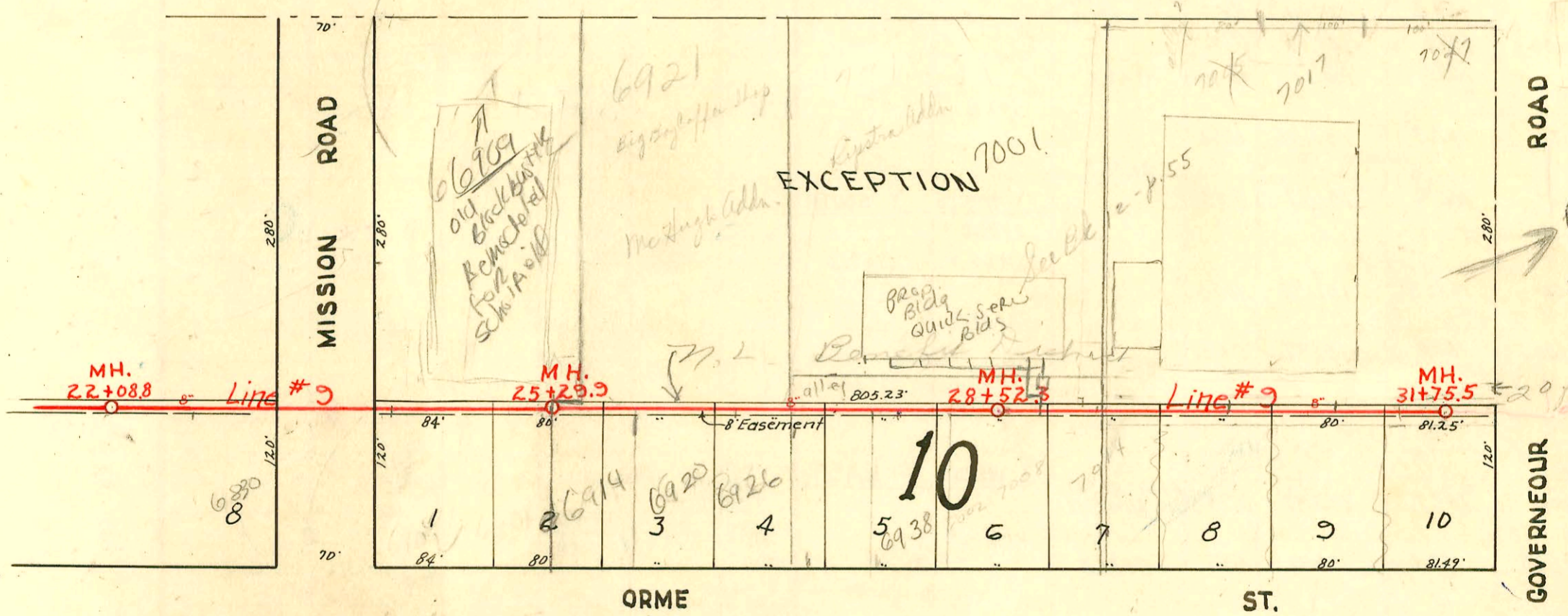


1" = 100'



LINE NOS. 9 & 9-A

KELLOGG ST.



2004-0178 4/27/04 7001

2006-00344 - (6921 E Kellogg) - 05' E of MH - Mics 2-13-00

SWR 2002 03830 9/9/02 6829 K Kellogg - Grass Inter. - Bob Scott
tied to bldg drain 27' S of bldg

1626000
13094 94-123-697
27990 top 6909 E. Kellogg - Brannon 8-3-94
Re. # 13312 25' top 6909 E. Kellogg - Brannon 5-25-68 (top in MH 25+29.9)
90+ 83481 top - 7017 E. Kellogg - Brannon 5-25-68 (line 9 (31+17.5) (set at 31+41.5 - 340' W of MH))
5540 - 71 - 7027 E Kellogg - 11-13-57 - J.O. McDonald - 6" on 8" wye
2003 2318 L # 807 - 7001 E Kellogg - 5-16-66 - AE Henning 5/0 104' W of MH 28+52.3 (27+48.3) w/ concrete
4851 - Top - 6920 E. Orme - 6-4-51 - Wright Pelly Co
4853 - Top at 27+27.9 - 6932 E. Orme - 6-4-51 - Wright Pelly Co
2003 00640 # 4854 - Top at 27+80.9 - 6938 E. Orme - 6-4-51 - Wright Pelly Co AE Henning 5/0 3' S of NPL + 26' W of EPL concrete in PVC 10/13/03
4835 - Top - 6830 E. Orme - 6-2-51 - Wright Pelly Co
7306 - Top - 7021 E. Kellogg - 1-28-52 - C.R. Leidy - # 20.00 special fee paid
deal off C3020 # 3367 Top - 6921 E. Kellogg - 12-2-52 - Nickell & Hensley deal off 5-10-69
259 Top 514-18 Hunter St. 3-19-56 Art Prosser

CONSTRUCTION RECORD

SERVICE RECORD

Line # 9
Continued

STATION	ELEVATION		Depth	MANHOLE	4-INCH "Y" BRANCHES		No. of Permit		House Number		DATE OF PERMITS	
	Ground	Grade			North	South	North West	South East	North West	South East	North West	South East
22+00	169.3	156.80	12.50									
22+08 ^o	169.8	156.84	12.96	22+08 ^o	22+01 ^o 4440 P.V.C. M.H. Tap	22+68 ^o	2002-0244 631993	6829-31 R E Kellogg	6830 E. Orme	9-9-02 3-29-33		6-2-51
23+00	168.2	157.20	11.00									
24+00	167.7	157.60	10.10									
25+00	167.2	158.00	9.20	25+29 ^o	411 507 40 P.V.C. M.H. 5 Tub.	25+74 ^o	94-13179-7 4849	6909 E. N.W. Kellogg	6910 E. Orme	9-14-94		8-17-94 6-4-51 6-8-794 6-7-51
25+29 ^o	167.0	158.12	8.88				94-14937					6-4-51
26+00	167.1	158.40	8.70				7-4850					2-10-57 6-4-51
27+00	167.1	158.80	8.30				17892 #4852					
28+00	166.6	159.20	7.40									
28+52 ^o	166.5	159.42	7.08	28+52 ^o			92-946-7		7002 S.O. E. Orme			1-22-92 7-6-51
29+00	166.3	159.60	6.70	29+24 ^o			13034 85109	91-38788-7	7005 S.O. E. Orme			12-10-91 7-6-51
30+00	166.2	160.00	6.20	30+18.3 ^o			13553	2017 Kellogg	7026 S.O. E. Orme			4-24-85 7-3-85 7-6-51
31+00	167.8	160.40	4.40	31+58 ^o			13554	14146 #5158	7017 S.O. E. Orme			7-3-85 7-6-51
31+75 ^o	164.1	160.71	3.39	31+75 ^o			13554	14147 5159	7017 Kellogg			4-24-85
0+00	169.4	155.86	13.54	0+00=18+83 ^o in Line #9								
1+00	169.3	156.24	13.06				0+20 ^o	#4152	6710 E. Orme			3-21-57
1+33	169.1	156.48	12.62	1+33			0+93 ^o	#4151	6702 E. Orme			3-21-51

Line #9-A

13035 - (7017 E. Kellogg - 27-85 - At Home 28+52.3E (S) 718' E of 28+52.3 - 29+24.1)
 C 3476 Tap 6921 E Kellogg - Vaughn City 4-8-67 (27+37.3) Tap for 25" P.R. Rec 23001 6-8-67
 Special for 200' for Sewer laid 11-8-50 with King #1346 - for 6801 E. Kellogg.
 # 3035 - Tap - 6801 E. Kellogg - 11-8-50 - Engin. Reynolds - no plans shown on permit.
 # 4158 - tap - 6818 E Orme - 3-21-51 - W. White Kellogg
 # 4836 - tap - 6824 E Orme - 6-2-51 - W. White Kellogg
 # 5157 - tap - 7014 E Orme - 7-6-51 - Wichita P. & M. Co (Hanning paper 5-20-52) (30' W 28E) 56 E 29+48.3
 # 5159 - tap - 7020 E Orme - 7-6-51 - Wichita P. & M. Co - 5/6 E 29+59.3
 # 5168 - tap - 7038 E Orme - 7-6-51 - Wichita P. & M. Co - 31, 37.0 %
 # 4215 - Tap 530 Mason 4-12-51 Kendall P. & M. Co
 # 4661 - Tap 584 Mason 10-11-55 - Sumner