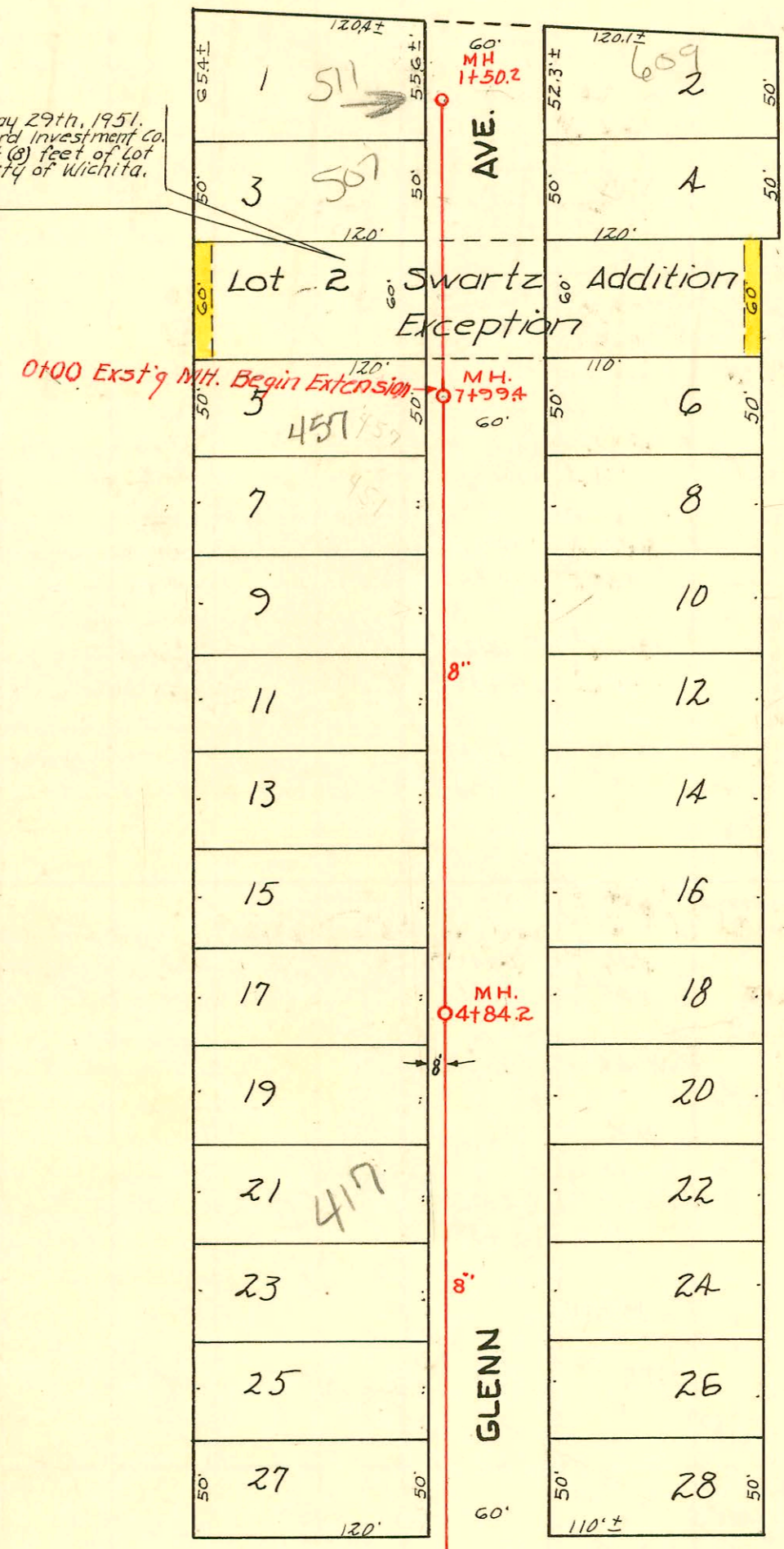


MELEAN BLVD.

EASEMENT # 2488, Made May 29th, 1951. From The Shirk-Breich-Gossard Investment Co. The west (8) feet and the east (8) feet of Lot 2, Swartz Addition to the City of Wichita, Sedgwick County, Kansas.



0+00 Exst'g MH. Begin Extension

Private Line 7
106.00' 0+00
South connected

Sta. 0+00 Exst'g MH. - 41' S. & 12' E. Iron
N. L. 3rd & 110' E. of E. L. Glenn.

Lat. N, S.S. # 8

PRIVATE SEWER-GOSSARD SUB-DIVISION
CITY OF WICHITA, KANSAS
L.K. WHITE CITY ENGINEER
W.B. CARTER - CONTRACTOR
OCT. 10, 1950, BK. NO. M-4

CONSTRUCTION RECORD						SERVICE RECORD						
STATION	ELEVATION		Depth	MANHOLE	4-INCH "Y" BRANCHES		No. of Permit		House Number		DATE OF PERMITS	
	Ground	Grade			North West	South East	North West	South East	North West	South East	North West	South East
0+00	114.7	110.30	4.40	0+00 Existg M.H.								
1+00	114.3	110.40	3.90									
1+75	113.9	110.47 out 110.57 in	3.43 3.33	1+75								
2+00	115.1	110.60	4.50									
					2+34 +85.7			#3216 #3220 #3217	421 n. Blenn R 409 Blenn		11-28-50 1-18-51 11-28-50	
3+00	114.4	110.70	3.70									
					3+34.4 4" sch 40 3+86.4			#3218 2001-62941 #3217	411 n. Blenn R 417 Blenn		11-28-50 11-19-51 11-28-50	
4+00	114.1	110.80	3.30									
					4+35.4 +78.2			#3220 #3221	421 n. Blenn 427 n. Blenn		11-28-50 11-28-50	
4+84.2	114.2	110.88	3.32	4+84.2								
5+00	114.0	110.90	3.10									
					5+35.7 +85.3			#3710 #3711	431 n. Blenn 437 Blenn		1-17-51 1-17-51	
6+00	113.6	111.00	2.60									
					6+33.1 +85.5			#3712 #3713	441 n. Blenn 447 n. Blenn		1-17-51 1-17-51	
7+00	114.6	111.10	3.50									
					7+37.1 +86.1			#3714 #3715	451 n. Blenn 457 n. Blenn		1-17-51 1-17-51	
7+99.4	114.0	111.20	2.80	7+99.4								
Extension												
0+00	114.3	111.20	3.10	0+00 Existg M.H.	4" sch 40 0+93.3			2001-440 #4124	501 n. R Blenn	508 n. Blenn	11-19-51 3-20-51	3-20-51
1+00	115.0	111.30	3.70		1+45.0	0+90.3 4" clay sealed 1+42.0		#4126 #4125	511 n. Blenn	517 n. Blenn	3-20-51 3-20-51	3-20-51 1-18-51
1+50	115.3	111.35	3.95	1+50								

#4340 - 2nd - 501 N. Blenn - 4-10-51 - Leimberg Pkly. Co. (4322)
 #228 - 1812 W. 2nd - extend line 115' east of M.H. #1775 - Davidson Pkly. Co. 2-28-52
 Connected at 1+06 - wye