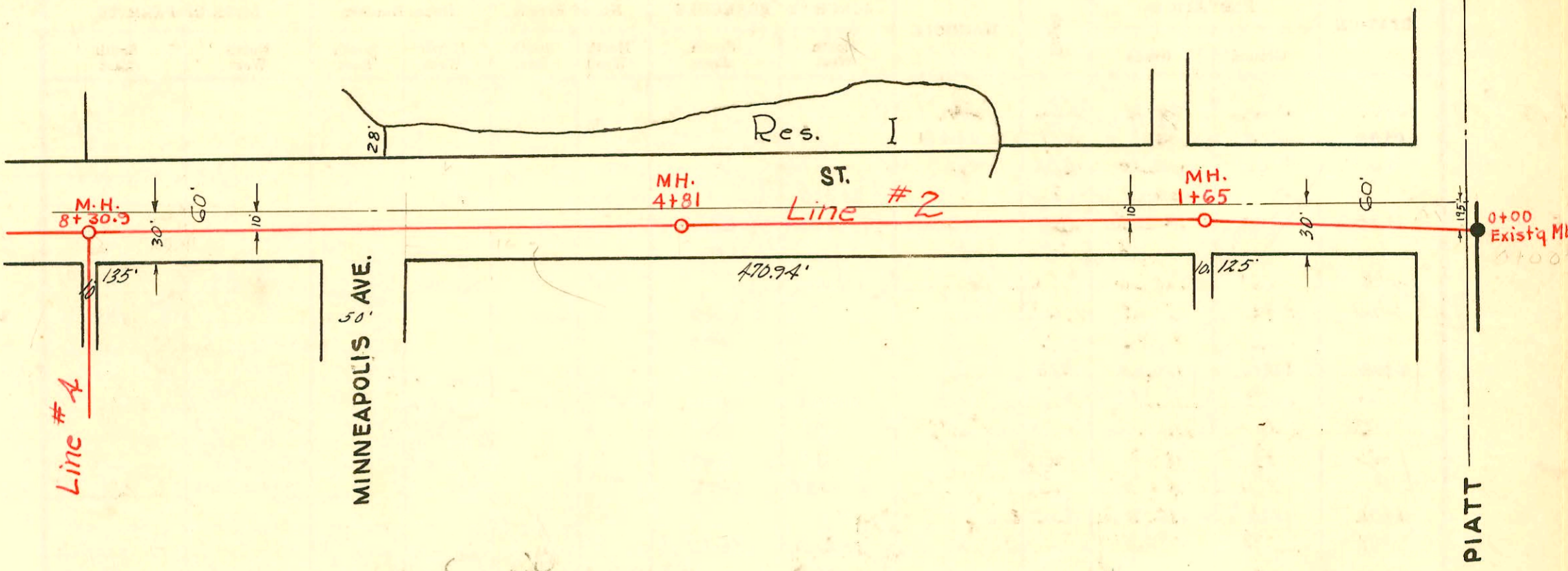
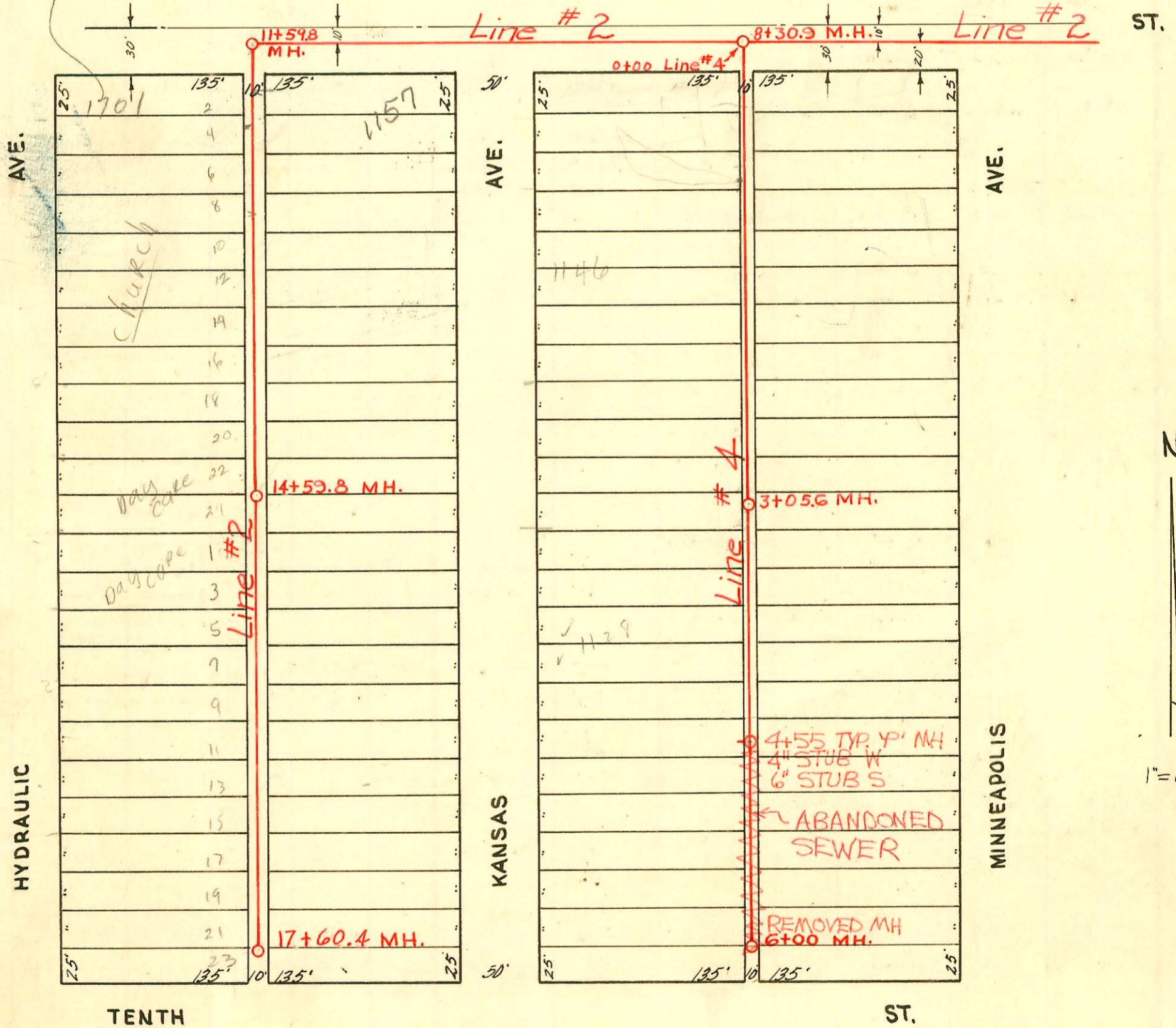


ELEVENTH



*add'l address
assignment of
1144 N Hydraultic
(previously ext Bldg
in Parks)
as of 4-18-2000
EK*

ELEVENTH



TENTH

ST.

PRIVATE SANITARY SEWER ALTERATIONS TO SERVE LOTS 1 & 2,
BLOCK 2, KUMC ADDITION
PRIV. PROJ. 534 PPS (607861)
BUILT BY TRI-STATE PLUMBING
BOOKED 11-28-95 FROM AS BUILTS

2
2

CONSTRUCTION RECORD

SERVICE RECORD

Line #2

STATION	ELEVATION		Depth	MANHOLE	4-INCH "Y" BRANCHES		No. of Permit		House Number		DATE OF PERMITS	
	Ground	Grade			North West	South East	North West	South East	North West	South East	North West	South East
0+00	114.5	109.18	5.32	0+00 Exist'g M.H.								
1+00	114.7	109.28	5.42									
1+65.0	114.2	109.35	4.85	1+65.0								
2+00	114.1	109.38	4.73									
3+00	113.7	109.48	4.22									
4+00	113.1	109.58	3.52									
4+81	113.2	109.66	3.54	4+81								
5+00	113.2	109.68	3.52									
6+00	113.6	109.78	3.82									
7+00	113.8	109.88	3.92									
8+00	113.2	109.98	3.22									
8+30.9	113.2	110.01	3.19	8+30.9								
9+00	113.2	110.08	3.12									
10+00	113.2	110.18	3.02									
11+00	112.7	110.28	2.42									
11+59.8	112.8	110.34	2.46	11+59.8	11+65.8 11+97.0	11+96 11+94.0	251826 #2559	1701 E. Church	1157 N. Kansas	9-23-74	10-30-02 7-35-51 9-13-50	
12+00	112.2	110.38	1.82									
					12+23.9 +51.4	12+20.9 +48.4 +97.2	#1415 #2366 #2361	1701 E. 11th	1147 N. Kansas 1137 N. Kansas	7-7-54	9-12-50 9-13-50	
13+00	113.8	110.48	3.32									
					13+00.2 +49.6 +95.3	13+46.6 +92.3	#0560	1701 E. 11th		10-25-66		
14+00	114.2	110.58	3.62									
					14+46.7	14+43.7	#2638		1133 Kansas		10-2-56	
14+59.8	114.6	110.64	3.96	14+59.8								
					14+95.3	14+92.3	1464	1144 N. Hydraulic City	1129 N. Kansas		7-16-56	
15+00	114.8	110.68	4.12									
					15+46.4 +95.1	15+43.4 +92.1	22084 1465 1466	1144 N. Hydraulic City	1125 N. Kansas 1121 N. Kansas	11-23-88	7-16-56 7-16-56	
16+00	114.4	110.75	3.65									
					16+44.0 +95.2	16+41.0 +92.2	#3900 193	1701 E. 10th		8-3-65 2-21-52		
17+00	113.5	110.85	2.65									
17+60.4	113.0	110.94	2.06	17+60.4								

Line #A

0+00	114.4	110.01	4.39	0+00 Exist'g M.H.	0+76.9 +89.2	0+73.9 +86.2	#2362 #2364 #2363 #2365	1809 E. 11th 1808 E. 11th	1817 E. 11th 1825 E. 11th	9-13-50 9-13-50	9-13-50 9-13-50	
1+00	113.1	110.11	2.99									
					1+04.5 +62.0	1+01.5 +59.0	3164 #2354 13752 #2357	1144 S. Kansas 1146 N. Kansas	1145 N. Kansas 1147 N. Kansas	11-20-50 1-10-61	9-13-50 9-13-50	
2+00	112.5	110.21	2.29									
					2+11.0 +62.6	2+08.0 +59.6	#81046		1138 N. Kansas		3-16-64	
3+00	111.9	110.31	1.59									
3+05.6	111.6	110.32	1.28	3+05.6								
					3+44.8	3+26.3	#5499 81065	1130 N. Kansas	1129 N. Kansas	3-23-64	8-10-51	
					3+79.3	3+74.0	10241	1128 N. Kansas		5-7-59		
4+00	111.9	110.41	1.49									
	113.05	110.14			4+28.6	4+25.6	#2970 #6193 1469 1224th		1133 N. Kansas 1132 N. Kansas		7-31-61 11-3-50	
5+00	111.6	110.51	1.09									
					5+35.7 +75.4	5+32.7	#15581 3845		1125 N. Kansas		8-25-69 8-12-51	
						5+85.0	#1469 1736	Hydraulic City	1101 N. Kansas		9-18-61 6-26-52	
6+00	111.7	110.61	1.09	6+00								

* #3165
1151 N. Minneapolis
11-20-50

210639 1124 + 1124 N. Hydraulic - top - Geo Griffin 9-24-68 (16+52.8)
 #3456 - top - 1129 N. Minneapolis (Reas) - 12-9-52 - J.A. Smith.
 C39167 #6263 - top - 1132 N. Hydraulic - 8-24-53 - Prof Robertson - 5-23-73 Al Henning (14+39.8)
 #1116 - top - 1142 N. Hydraulic - 6-4-54 - Arthur Ray - Seal off C 1865 - Bradford Service 2-13-67
 #6627 - top - 1154 N. Minneapolis - 11-11-55 - James J. Hy. Co.
 C39170 #16034 - top - 1132 N. Hydraulic - top - Lee Service - 8-16-62 (14+95.8) - 5-23-73 Al Henning