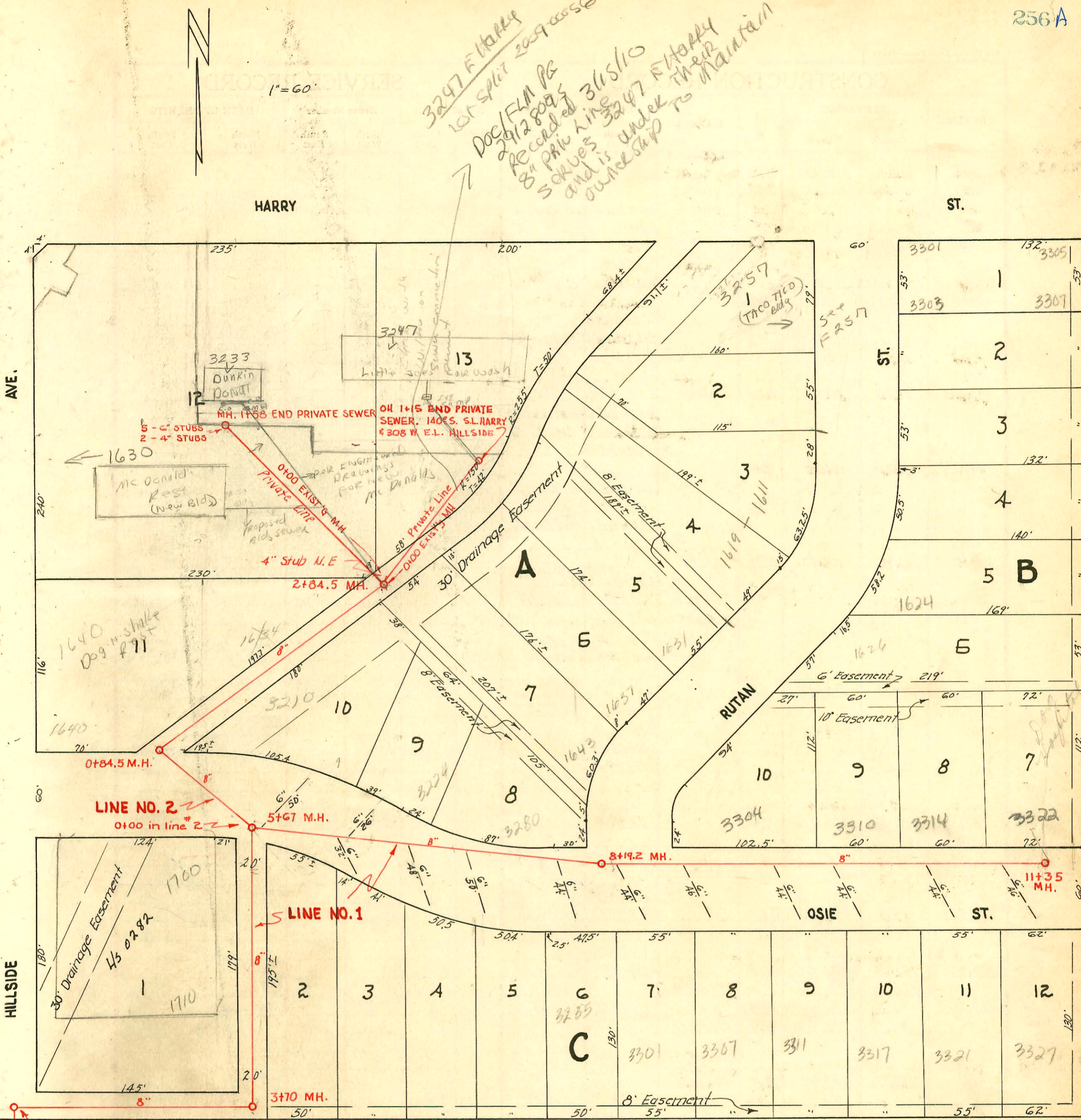


1" = 60'

3247 F. Harry
Lot split 2009 0056
Doc/FM PR
2012 8095
Recorded 3/16/10
8" PVC line
3247 F. Harry
3 drives under
and is under
owner's
to maintain



2+00 MH.
8" ← LINE NO. 1

0+00 Existing MH.
2003 00434 2118103 3304 Osie - A Good P1br - 4" PVC Replace about 40', (twinco, 2022)
Tied to castile
93-102047 - 4" MH stub - west to 6" MH stub - west + sealed off in manhole.
#11400 - Top of 1630 S. Hillside - Callion P1br, 9-3-59 (1+53.12)
#12001 - Lead off 1600 S. Hillside - D.A. Smith 11-27-59 (1+58 MH stub)
93-17861-7 178-93 1630 MC Hillside (New Mc Donald's - Todd P1br - Rest)
4" Clay tile line sealed off at wye and 53 1/2 ft Northwest of MH4

LAT. 7, SUBMAIN W., S. S. NO. 12
CITY OF WICHITA, KANSAS
L.K. WHITE CITY ENGINEER
W.B. CARTER CONTRACTOR
OCT. 1950. PROJ. NO. C20-63
BOOK NO. M-13

CONSTRUCTION RECORD

SERVICE RECORD

LINE NO. 1
LAT. 7, SUB. W., S.S. # 12

STATION	ELEVATION		Depth	MANHOLE	4-INCH "Y" BRANCHES		No. of Permit		House Number		DATE OF PERMITS	
	Ground	Grade			North West	South East	North West	South East	North West	South East	North West	South East
0+00	113.0	107.00	6.00	0+00 Exist'g MH.								
1+00	114.1	107.40	6.71									
2+00	116.1	107.80 out 107.98 in	8.30 8.12	2+00								
3+00	115.7	108.40	7.30									
3+70	116.3	108.68 out 108.90 in	7.62 7.40	3+70.0	3+02							
4+00	116.9	109.00	7.90		Y WEST	Y EAST						
					4+12.6	4+09.6						
					+52.0							
					+91.4							
5+00	116.6	109.40	7.20									
6+00	116.2	110.03	6.17	5+67.0								
					6+04.5 End 6" lead No. 52 #4741				3219 E. One		5-26-51	
					6+45.3 End of 6" Lead So. 32 #4740				3223 E. One		5-26-51	
					+53.0 " " " " No. 26 #6661				3224 E. One		11-29-51	
7+00	118.2	110.43	7.77		7+00.8 " " " " So. 48 #2894				3227 E. One		11-27-50	
					Y NORTH							
					7+15.7							
					7+39.0 End 6" lead So. 50 #2893				3231 E. One		10-27-50	
8+00	121.2	110.83	10.37									
8+19.2	121.9	110.90 out 113.00 in	11.00 8.90	8+19.2	8+03 End 6" lead So. 44 #5734				3325 E. One		9-4-51	
					8+50 End 6" lead So. 44 #2892				3307 E. One		11-27-50	
					8+90.0							
					8+97 End 6" lead So. 46 #2890				3307 E. One		10-27-50	
9+00	124.9	114.64	10.26									
					9+60.7 End 6" lead So. 44 #2891				3315 E. One		10-27-50	
					9+88.5							
10+00	127.4	116.64	10.76									
					10+05.6 End 6" lead So. 44 #2889				3317 E. One		10-27-50	
					10+50							
					10+71.2 End 6" lead So. 44 #2888				3321 E. One		10-27-50	
11+00	128.6	118.64	9.96									
					11+23.0							
					11+29.6 End 6" lead So. 46 #2889				3327 E. One		10-27-50	
11+35	129.2	119.34	9.86	11+35	End contract beg. private line							
12+00	130.1	120.19	9.91									
12+24.2	130.2	120.44	9.76	o. H. 12+24.2	12+22.8		#3604		3421 E. Harry		1-8-51	

NOTE: See drawing for private Sewer line (Sta. 11+35 to 12+24.2) on page 257.

LINE NO. 2

WELCH CLEANERS PRIVATE SEWERS Book M-Misc

Private S.S. for Welch Book K-18

Connected to Streets in M.H. 1+58

0+00	115.5	109.90	5.60	0+00 = 5+67 in Line # 1								
					0+84.5							
1+00	120.1	110.11	9.99		Y NORTH							
					1+09.4							
2+00	119.3	110.21	9.09		2+42.5				3210 E. One		9-25-72	
					2+62.5 - 6" (4" stub N.E.)							
2+84.5	117.2	110.29	6.91	2+84.5								

NOTE: Line No. 3 on page 257

- #6659 - 2nd - 3230 E. One - 11-29-51 - Frederick Pllg. Co.
- #6102 - 1600 S. Hillside - 10-12-51 - Brodie Pllg. Co.
- #6103 - 1600 S. Hillside - 10-12-51 - Brodie Pllg. Co.
- #6105 - 1602 S. Hillside - 10-12-51 - Brodie Pllg. Co.
- #6106 - 3211 E. Harry - 10-12-51 - Brodie Pllg. Co.
- #6107 - 3215 E. Harry - 10-12-51 - Brodie Pllg. Co.
- #1122 - Private line - 3247 E. Harry - 6-7-54 - W.B. Carter
- C-18545 - 3213 E. Harry - Al Hermann 3-26-70
- #6825 - 2nd - 3304 E. One - 12-12-51 - Frederick Pllg. Co.
- #7472 - 2nd - 1700-28 S. Hillside - 2-28-52 - Frederick Pllg. Co.
- #1576 - 2nd - 1700 - S. Hillside - 6-11-52 - Thompson Pllg. Co.
- #885 - 2nd - 3316 E. One - 4-15-52 - Frederick Pllg. Co.
- #886 - 2nd - 3310 E. One - 4-15-52 - Frederick Pllg. Co.
- #1585 - 2nd - 3310 E. One - 4-15-52 - Frederick Pllg. Co.
- #3291 - Trailer - 3217 E. Harry - 1-31-55 Cowan
- #2020 - Cap - 1600 Hillside - 10-12-51 - Brodie Pllg. Co.

73
77
50
130
30