

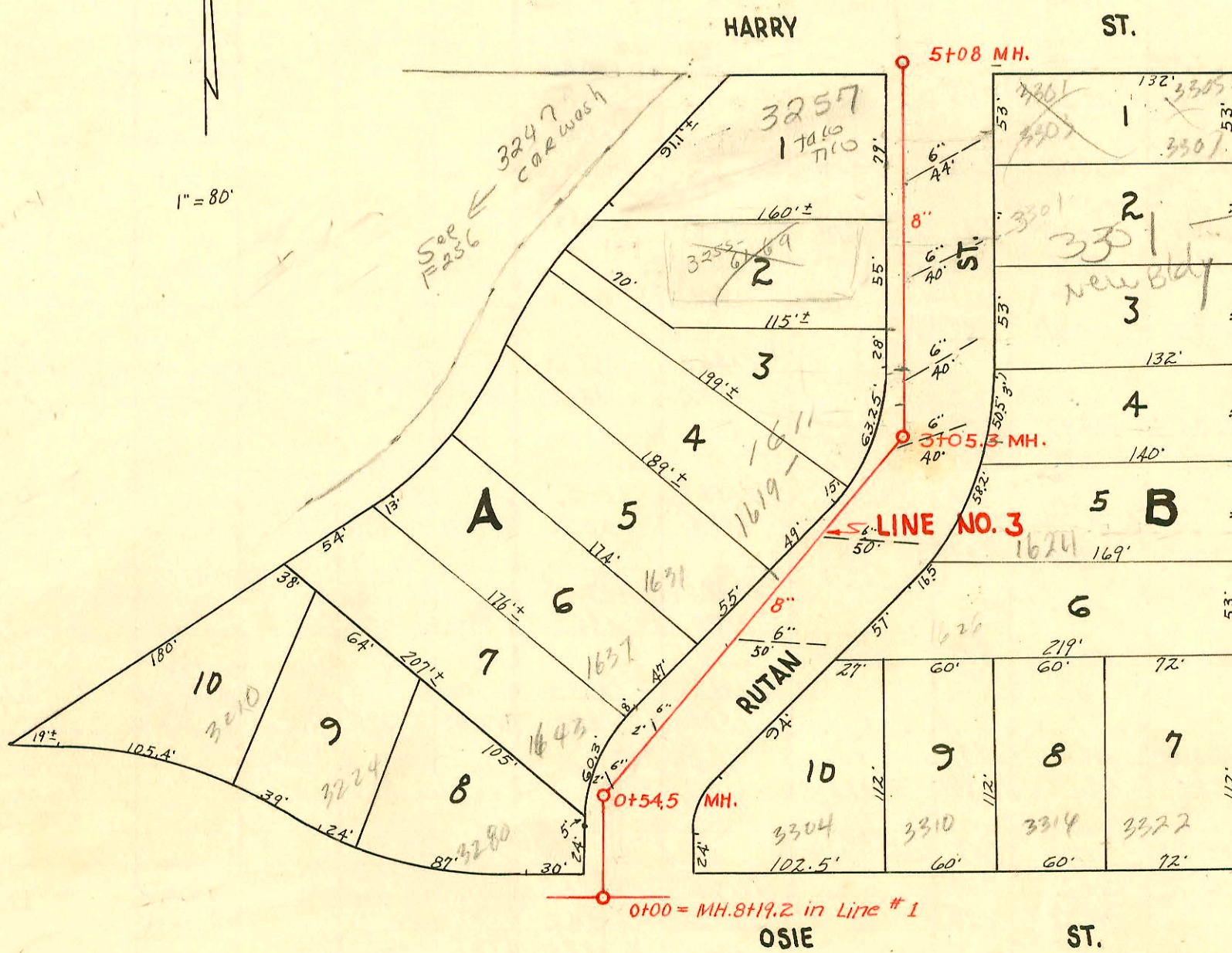
SERVICE RECORD

CONSTRUCTION RECORD



1" = 80'

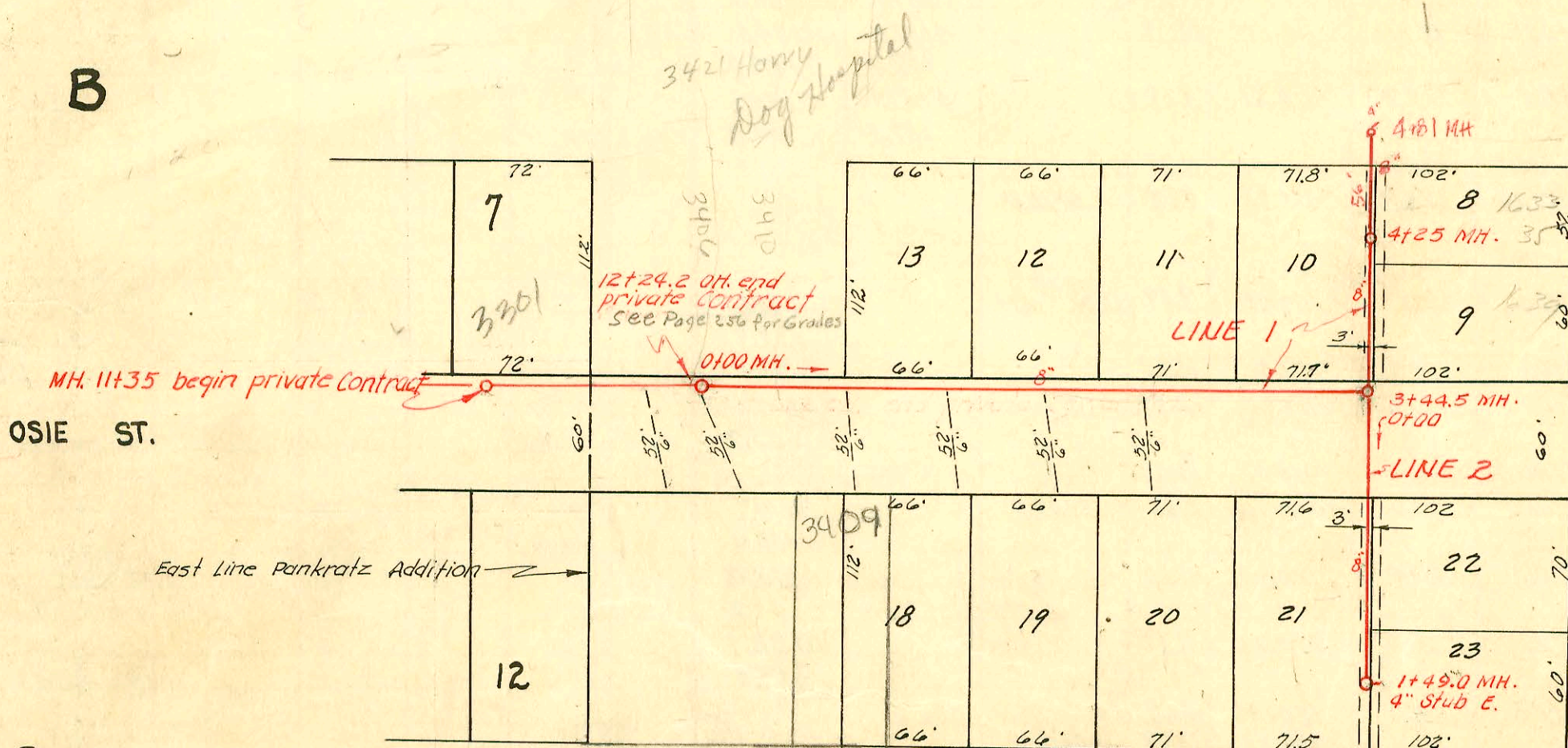
plat  
10-63



330 F Hwy  
See  
att'd  
sheet  
Do not issue  
sewer  
permit  
until per  
from Phil  
or Dan  
8/18/05  
BSA

PART OF LAT. 7, SUB. W, S. S. 12

B



OSIE ST.

AVE.

CLIFTON

C

LAT. 14, SUB. W, S. S. 12  
 W. B. CARTER, MAY 23, 1953  
 BK. NO. JT 70, PROJ. NO. C23-19

CONSTRUCTION RECORD

SERVICE RECORD

STATION	ELEVATION		Depth	MANHOLE	4-INCH "Y" BRANCHES		No. of Permit		House Number		DATE OF PERMITS	
	Ground	Grade			North West	South East	North West	South East	North West	South East	North West	South East
LINE NO. 3												
0+00	122.2	112.38	9.82	0+00 = 8+19.2								
0+54.5	122.0	112.62	9.38	in Line #1								
				0+54.5								
1+00	121.7	112.80	8.90									
				1+57.5								
2+00	122.3	113.20	9.10									
				1+94.6 End 6" lead East 50'								
				2+26.3								
3+00												
3+05.3	122.9	113.62	9.28	3+05.3								
				3+06.6 End 6" lead East 40'								
				3+57.0 " " " " 40'								
				3+85.5								
4+00	122.0	114.00	8.00									
				Seat off 4+08								
				4+09 End 6" lead East 40'								
				4+40.7								
				4+66.4 End 6" lead East 44'								
5+00												
5+08.0	120.4	114.43	5.77	5+08.0								
				4" Y Branches								
				6" Leads								
				North South								
				0-22.5								
				6" lead So.								
0+0	129.4	122.46	6.9	0+0								
				0+0 6" lead								
				0+20.0 end 6"								
				6" lead at SL Osie								
				0+26.0								
				0+79.5								
				0+75.6 6" lead								
				0+82.0 end 6"								
				lead at SL Osie.								
1+0	131.4	123.46	7.9	1+0								
				1+27.5 6" lead								
				1+33.0 end 6"								
				lead at SL Osie.								
				1+78.0 6" lead								
				1+85.0 end 6"								
				lead at SL Osie.								
2+0	133.8	124.46	9.3	2+0								
				2+30.5 6" lead								
				2+34.0 end 6"								
				lead at SL Osie.								
3+0	136.3	125.46	10.8									
	136.7	126.00	10.8									
4+0	136.2	126.69	9.5									
	135.8	126.93	8.9									
	134.1	127.20										
				West East								
				3+44.5								
				4+17.0								
				4+25.0								
				4+81.0								
				0+00 = 3+44.5								
				in Line 1								
0+0	136.7	127.92	8.8									
				0+82.0								
1+0	137.7	128.92	8.8									
	138.2	129.42	8.8									
				1+05.5								
				1+49.0								
				4" stub E.								

LAT. 7, SUB. W, 55.12

Line #1

Lat. 14, Sub. W, S. S. 12

Line #2

Top 45199 - Mr. Donald - 3402 C Osie - 5-11-53  
 Top 3208 - Out Basin 3485-27 Osie - 1-24-55  
 # 3335 - 3261 E. Harry - Jones City 10-24-65 - Top (3+42.9) → 4" cast iron line 50' in cleanout 11' w of SK and 16' E of WPL  
 # 3529 - 3255 E. Harry - Leo Snuffer - 3-21-66 top (3+20.5) (A.M.H.)  
 # 25455 - 6-4-90 - 3257 E. Harry - Taco Tins - Burgess NK - 4" SDR 35 tied into existing cast iron line 44' from main,  
 # 25992 - 8-22-90 - 3257 E. Harry (Le Park - Kent Burgess) repaired elbow in line 40' off of main. Orig. tap is 166' S. of MH 5+08)