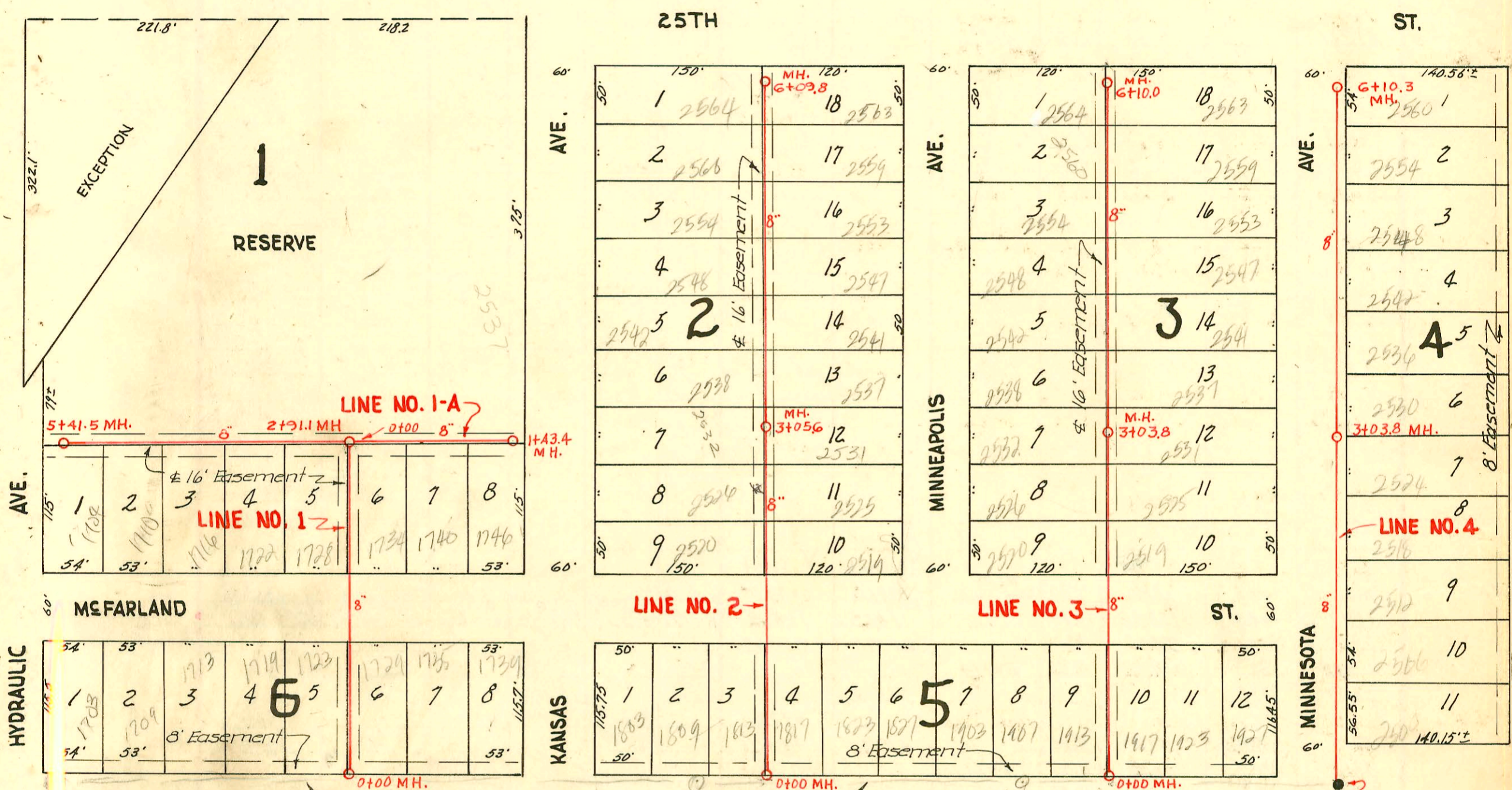




1" = 100'



Note: Existing Sewer runs E. & W. here. See page 169.

0+00 Existing MH. 6' west of 34' So. N.E. cor. 24th & Minn.

LAT. 22, DIST. T, S.S. NO. 12
 CITY OF WICHITA, KANSAS
 L.K. WHITE CITY ENGINEER
 W.B. CARTER - OCT. 1950
 PROJ. NO. C20-29, BK. M-4

CONSTRUCTION RECORD

SERVICE RECORD

STATION	ELEVATION		Depth	MANHOLE	4-INCH "Y" BRANCHES		No. of Permit		House Number		DATE OF PERMITS		
	Ground	Grade			North West	South East	North West	South East	North West	South East	North West	South East	
LINE NO. 1 0+00 1+00 2+00 2+91.1 3+00	125.1	118.98	6.12	0+00 New MH.									
	126.2	119.08	7.12										
	126.3	119.18	7.12										
	126.3	119.27 out 119.48 in	7.03 6.82	2+91.1									
	126.5	119.49	7.01										
3+03 3+51.1								# 3475	1728 McFarland		12-11-52		
								# 3474	1722 McFarland		12-11-52		
								# 3473 # 3472	1716 McFarland 1710 McFarland		3-21-66 12-11-52 6-15-65 12-11-52		
4+00 5+00	126.7	119.58	7.12					# 3477	1704 McFarland		7-6-65 12-11-52		
	126.8	119.68	7.12					# 3477					
5+41.5	127.2	119.72	7.48	5+41.5									
LINE NO. 1-A 0+00 1+00 1+43.4	126.3	119.46	6.84	0+00 = 2+91.1 in Line #1				# 3476	1734 McFarland		12-11-52		
	126.6	119.57	7.03					# 3477	1740 McFarland		12-11-52		
	127.0	119.61	7.39	1+43.4				# 3478	1746 McFarland		12-11-52		
LINE NO. 2 0+00 1+00 2+00 3+00 3+05.6 4+00 5+00 6+00 6+09.8	126.1	118.61	7.49	0+00 New MH.	Y WEST	Y EAST							
	126.8	118.71	8.09										
	127.3	118.81	8.49					# 7387	2520 N. Kansas	2519 N. Municipal	2-4-52	2-4-52	
	127.4	118.91	8.49					# 7388	2526 N. Kansas	2525 N. Municipal	2-4-52	1-7-85	
	127.4	118.92	8.48	3+05.6				# 7389	2532 N. Kansas	2531 N. Municipal	2-4-52	6-1-70 2-4-52	
	127.7	119.01	8.89					# 7390	2536 N. Kansas	2537 N. Municipal	2-4-52	6-8-70	
	127.9	119.01	8.89					# 7391	2542 N. Kansas	2541 N. Municipal	2-4-52	2-4-52	
	128.1	119.11	8.99					# 7392	2548 N. Kansas	2547 N. Municipal	2-4-52	2-4-52	
	128.2	119.21	8.99					# 7394	2560 N. Kansas	2559 N. Municipal	2-4-52	2-4-52	
	128.1	119.22	8.88	6+09.8				# 7395	2564 N. Kansas	2563 N. Municipal	2-4-52	2-4-52	
	LINE NO. 3 0+00 1+00 2+00 3+00 3+03.8 4+00 5+00 6+00 6+10.0	125.6	118.11	7.49	0+00 New MH.				# 7329	2520 N. Municipal	2519 N. Municipal	1-7-83 11-26-51	7-9-51
		126.0	118.21	7.79					# 7329	2526 N. Municipal	2525 N. Municipal	11-26-51	7-9-51
		126.3	118.31	7.99					# 7329	2532 N. Municipal	2531 N. Municipal	11-26-51	7-9-51
128.6		118.41	10.19					# 7329	2536 N. Municipal	2537 N. Municipal	11-26-51	7-9-51	
128.7		118.42	10.28	3+03.8				# 7329	2542 N. Municipal	2541 N. Municipal	11-26-51	7-9-51	
129.1		118.51	10.59					# 7329	2548 N. Municipal	2547 N. Municipal	11-26-51	7-9-51	
128.3		118.61	9.69					# 7329	2554 N. Municipal	2553 N. Municipal	11-26-51	7-9-51	
128.0		118.71	9.29					# 7329	2560 N. Municipal	2559 N. Municipal	11-26-51	7-9-51	
128.1		118.72	9.38	6+10.0				# 7329	2564 N. Municipal	2563 N. Municipal	11-26-51	7-9-51	
LINE NO. 4 0+00 1+00 2+00 3+00 3+08.8 4+00 5+00 6+00 6+10.3		127.2	117.71	9.49	0+00 New MH.				# 3780	2500 N. Municipal		7-31-90 7-25-51	
	129.5	117.81	11.69					# 3781	2506 N. Municipal		1-25-51		
	130.5	117.91	12.59					# 3782	2512 N. Municipal		1-25-51		
	131.6	118.01	13.59					# 4437	2518 N. Municipal		4-24-51		
	131.6	118.02 out 120.00 in	13.58 11.60	3+03.8				# 4438	2524 N. Municipal		4-24-51		
	131.4	120.10	11.30					# 4439	2530 N. Municipal		4-24-51		
	131.4	120.10	11.30					# 4440	2536 N. Municipal		4-24-51		
	131.6	120.20	11.40					# 4441	2542 N. Municipal		4-24-51		
	130.7	120.30	10.40					# 4442	2548 N. Municipal		4-24-51		

4910 - 2539 N. Municipal - 4-22-83 - Mike Bratcher