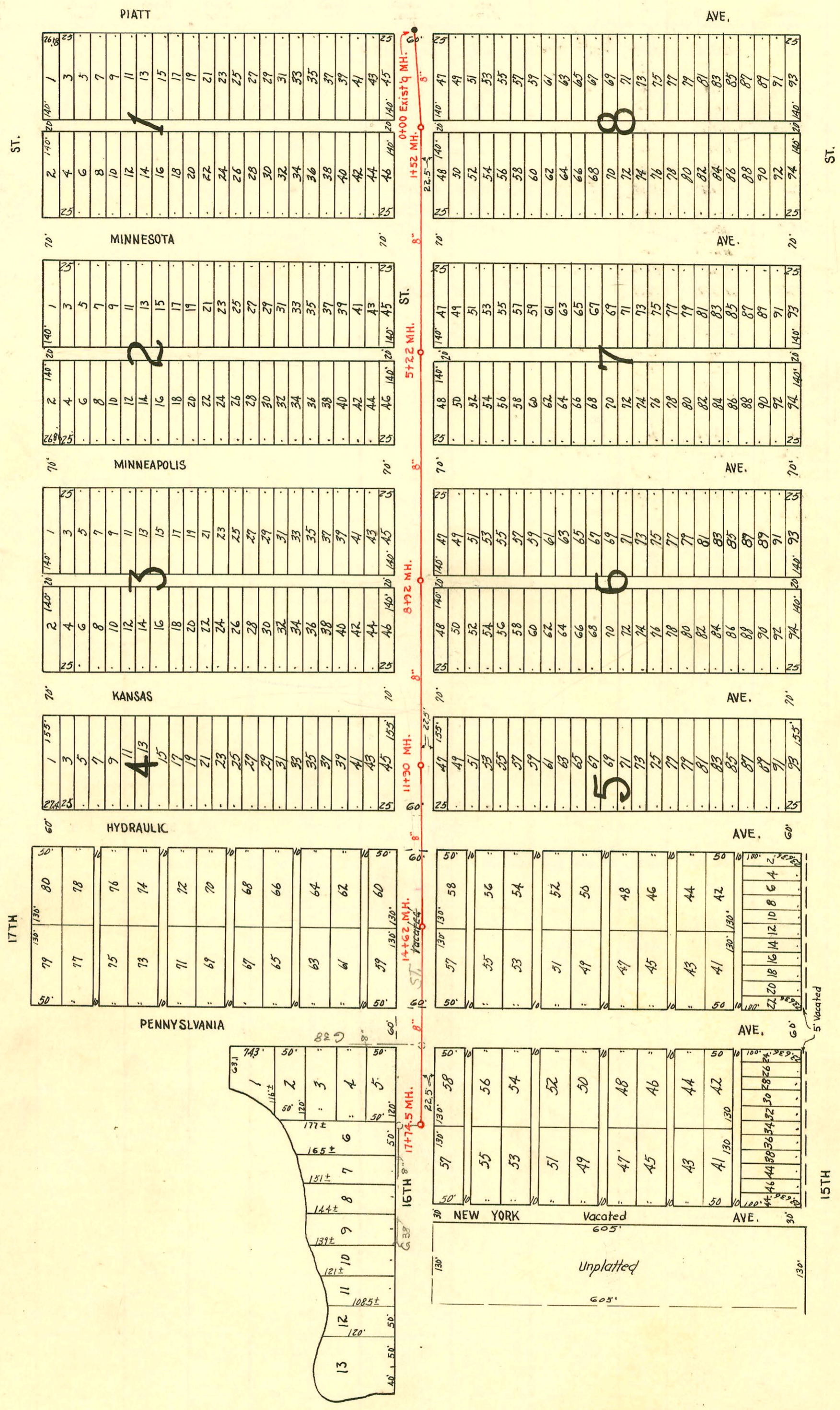




Scale 1" = 150'



CONSTRUCTION RECORD						SERVICE RECORD						
STATION	ELEVATION		Depth	MANHOLE	4-INCH "Y" BRANCHES		No. of Permit		House Number		DATE OF PERMITS	
	Ground	Grade			North West	South East	North West	South East	North West	South East	North West	South East
0+00	117.7	111.59	6.11	0+00 Existg M.H.								
1+00	117.6	111.69	5.91									
1+52	117.6	111.74	5.86	1+52								
2+00	117.6	111.79	5.81									
3+00	117.4	111.89	5.51									
4+00	117.3	111.99	5.31									
5+00	117.4	112.09	5.31									
5+22	117.5	112.11	5.39	5+22								
6+00	117.7	112.19	5.51									
7+00	117.5	112.29	5.21									
8+00	117.0	112.39	4.61									
8+92	117.0	112.48	4.52	8+92								
9+00	117.0	112.49	4.51									
10+00	117.3	112.59	4.71									
11+00	118.1	112.69	5.41									
11+90	117.0	112.78	4.22	11+90								
12+00	117.0	112.79	4.21									
13+00	116.3	112.89	3.41		6" Wye 13+77.2							
14+00	117.2	112.99	4.21									
14+62	117.2	113.05	4.15	14+62								
15+00	117.5	113.09	4.41									
16+00	117.3	113.19	4.11									
17+00	117.2	113.29	3.91									
17+74.5	117.7	113.37	4.33	17+74.5	End							

#5752-24-1807 E. 16th-9-4-51- Rex Robertson, Inc. (#20.00 special fee paid 9-4-51).
 2003-01295#6827-24-1650 A. Kansas 12-12-51- Rex Robertson, Inc. (#20.00 special fee paid 12-12-51), sealed by curb
 #6828-24-1811 E. 16th-12-12-51- Rex Robertson, Inc. (#20.00 special fee paid 12-12-51).
 #2486-24-1704 N. Republic-9-11-52- Frederick Raby