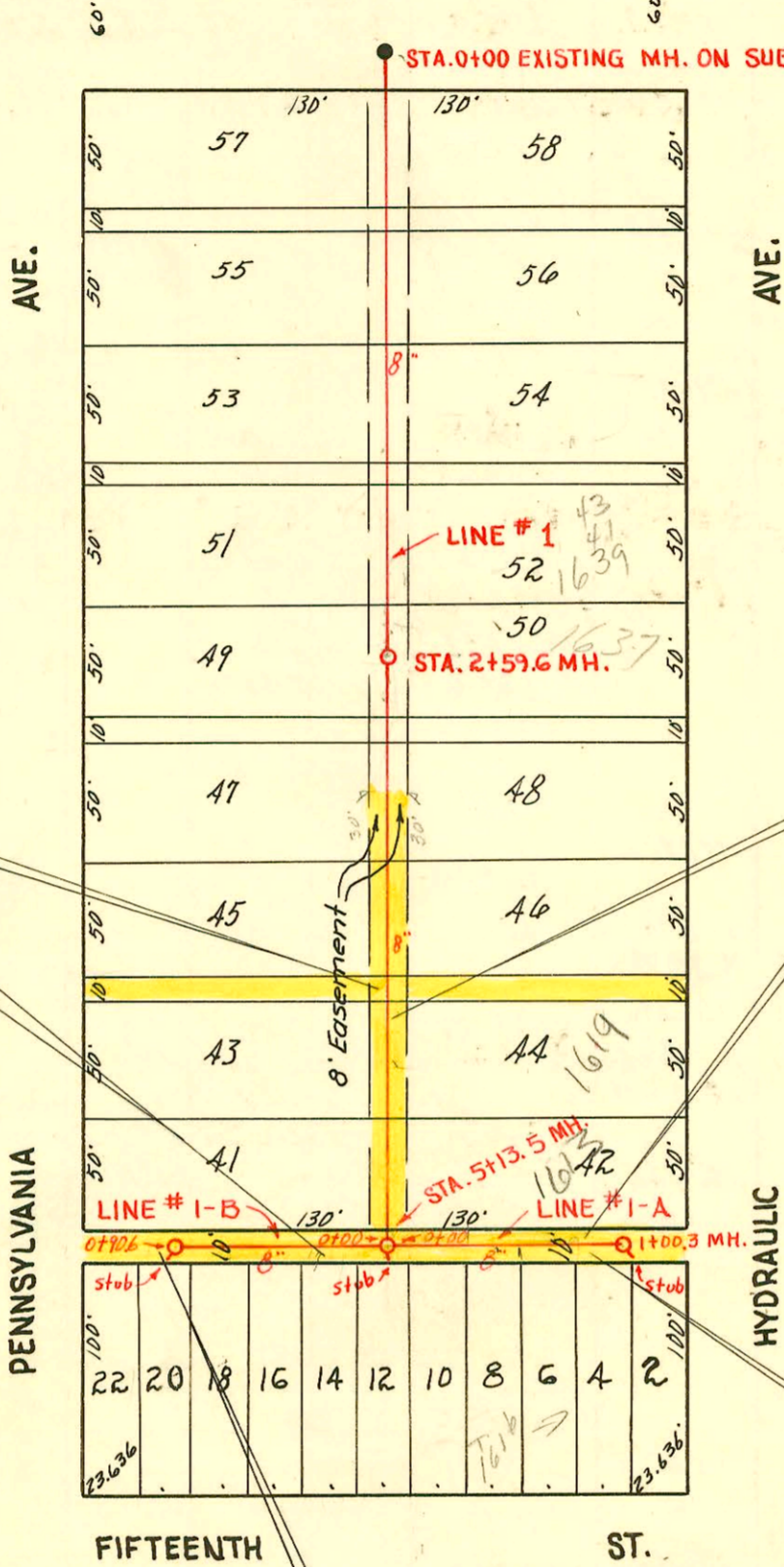


CONSTRUCTION RECORD

SIXTEENTH

ST.



EASEMENT # 2453, Made Aug. 17th, 1950, By J. C. Cravens and Geneva P. Cravens his wife.
 All of the vacated alley adjoining on the north Lots 10, 12, 14, 16, and the east 5.46 feet of lot 18, on 15th St. in Spring Grove Second Addn. to the City of Wichita, Kansas, as it existed before the vacation thereof.
 The east eight (8) feet of the following described property, to-wit: Lots 41, 43, 45, the south 30 feet of Lot 47, and the vacated alley between lots 43 and 45, on Orange, now Pennsylvania Ave. in Spring Grove Second Addn. to the City of Wichita, Kansas, as it existed before the vacation thereof.

EASEMENT # 2456, Made Aug. 16th, 1950, By Allen S. Hughes and Marydell Hughes, his wife, and Howard A. Shepherd and Cora R. Shepherd, his wife.
 The north half of the vacated alley adjoining on the south the east 94.54 feet of Lot 42, on Hydraulic Ave., in Spring Grove Second Addn. to the City of Wichita, Kansas, as it existed before the vacation thereof.
 The west eight (8) feet of the following described property, to-wit: Lots 42, 44, 46, the south 30 feet of Lot 48, and the vacated alley between Lots 44 and 46, on Hydraulic Ave. in Spring Grove Second Addn. to the City of Wichita, Kansas, as it existed before the vacation thereof.

EASEMENT # 2454, Made Aug. 23, 1950, By Dewey F. Loranice and Vera I. B. Loranice (husband & wife).
 The south half of the vacated alley adjoining on the north, lots 2, 4, 6, and 8 on Fifteenth St. in Spring Grove Second Addn. to the City of Wichita, Kansas, as it existed before the vacation thereof.

EASEMENT # 2455, Made Aug. 17, 1950, By Ted C. Crockett and Hattie M. Crockett his wife.
 All of the vacated alley adjoining on the north Lots 22, 20 and 18, except the east 5.46 feet of said Lot 18, on 15th St. in Spring Grove Second Addition to the City of Wichita, Kansas, as it existed before the vacation thereof, located in the SE 1/4 of 9-27-1E.

LAT. 3, SUBMAIN Y, S.S. NO. 12
 W. B. CARTER NOV. 1950
 PROJ. NO. C20-24
 BOOK NO. M-12

CONSTRUCTION RECORD

SERVICE RECORD

STATION	ELEVATION		Depth	MANHOLE	4-INCH "Y" BRANCHES		No. of Permit		House Number		DATE OF PERMITS	
	Ground	Grade			North West	South East	North West	South East	North West	South East	North West	South East
#1 0+00	117.2	113.14	4.06	0+00 Existg MH.	0+44.4	0+41.4	#3936	#992	1660 Penn	1651 N.W. Hydraulic	1-30-53	5-19-54
1+00	117.4	113.25	4.15		1+00.0*	+97.0	#4668	#4264	1654 N. Penn.	1645 N. Hydraulic	5-15-51	4-2-51
2+00	116.7	113.35	3.35		1+33.2	1+30.2	#3934		1648 Penn	1639 N.W. Hydraulic	1-30-53	
2+59.6	116.2	113.41	2.79	2+59.6	+79.0	+76.0	#3933	#7505	1642 Penn	1637 N. Hydraulic	1-30-53	11-21-69
3+00	116.1	113.45	2.65		2+33.8	2+30.8	#3932	#5141	1636 Penn	1637 N. Hydraulic	1-30-53	5-8-53
4+00	116.7	113.55	3.15		2+83.2	2+80.2	#3931	#3067	1630 Penn	1625 N. Hydraulic	1-30-53	11-8-50
5+00	116.6	113.65	2.95		3+62.0	3+59.0	#4142	#3068	1619 Penn	1613 N. Hydraulic	3-20-51	11-8-50
5+13.5	116.2	113.66	2.54	5+13.5	4+37.0	4+34.0	#4142	#3069	1614 Penn	1613 N. Hydraulic	3-20-51	1-23-95
					+89.7	4+86.7	#4142	#3069	1614 Penn	1613 N. Hydraulic	3-20-51	11-8-50
					(4" Stub South)		#5563		1614 1524		1-3-51	
#1-A 0+00	116.2	113.67	2.53	0+00 = 5+13.5 in line #1	Y South		95-1054	#3329	1613 Hydraulic	1614 E 1524	1-23-95	12-11-50
1+00	116.4											
1+00.3	116.4	113.77	2.63	1+00.3	(4" Stub Southeast)							
#1-B 0+00	116.2	113.67	2.53	0+00 = 5+13.5 in line #1	Y South							
0+90.6	117.3	113.76	3.54	0+90.6	(4" Stub Southwest)	0+46.9	#3562	#3328	1610 E. 1524	1600 E. 1524	1-23-51	12-11-50

* #3935
1654 Penn
1-30-53

C17066 - 16377 Hydraulic - Joe Spaulding - top (2+56.6)
#2083 - Drailer - 1600 N. Pennsylvania - Joe McDonald - 9-22-54 - 6088 wpr