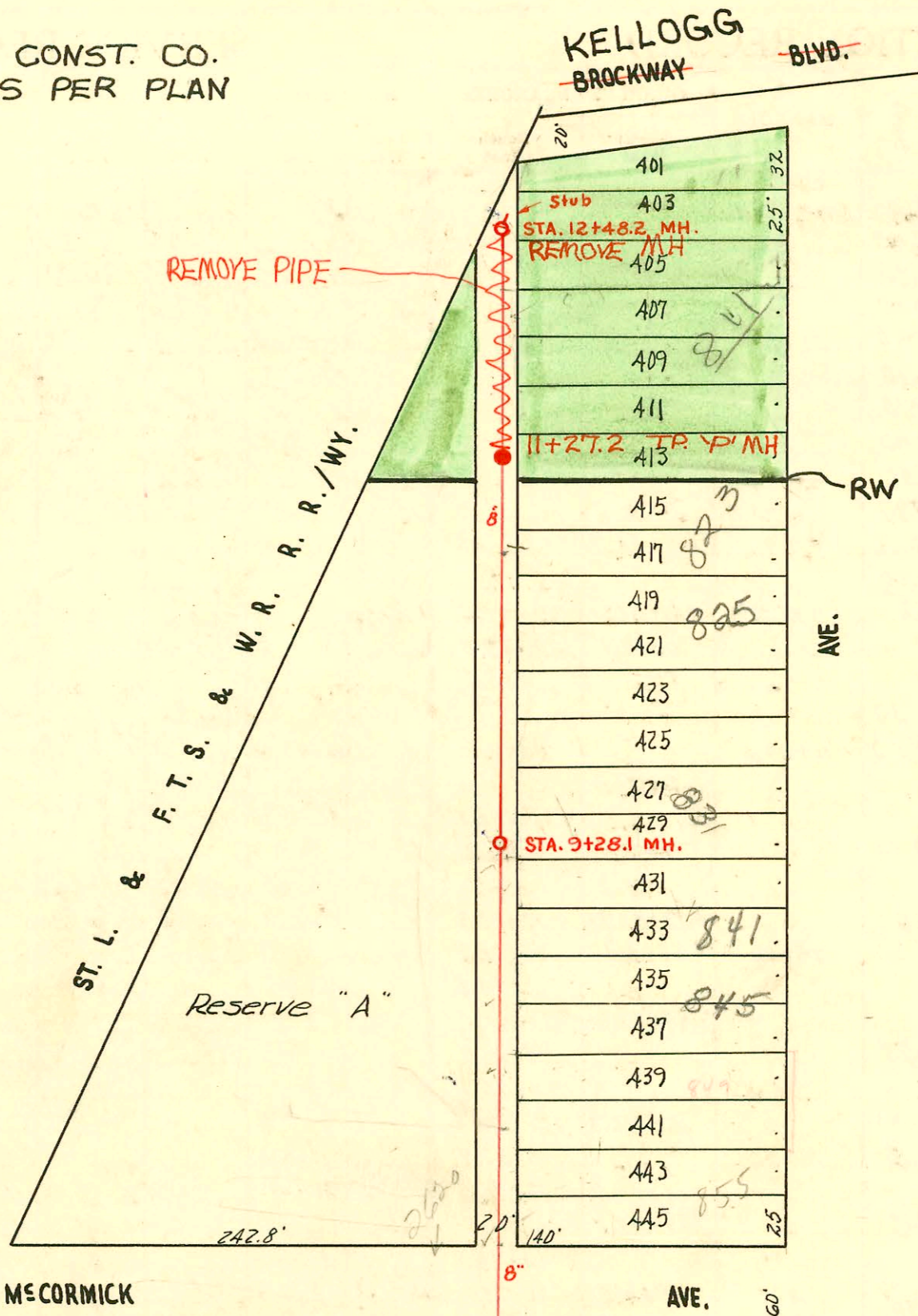
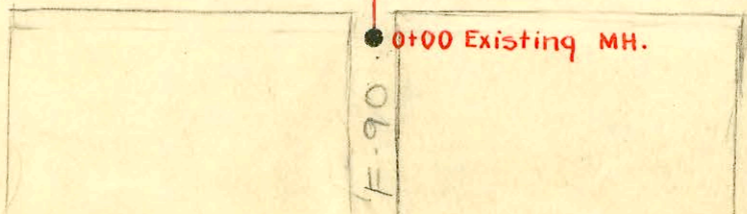


KELLOGG - K-42 TO SYCAMORE (SANITARY SEWER CHANGES)  
 PROJ. NO. 700500  
 BUILT BY WILDCAT CONST. CO.  
 BOOKED 2-5-96 AS PER PLAN



23	98	140	20	140	97	25
	100				99	25
	102				101	25
	104				103	25
	106				105	25
	108				107	25
	110				109	25
	112				111	25
	114				113	25
	116				115	25
	118				117	25
1026	120				119	25
	122				121	25
	124				123	25
	126				125	25
	128				127	25
	130				129	25
	132				131	25
	134				133	25
1048	136				135	25
	138				137	25
	140				139	25
	142				141	25
25	144	140	20	140	143	25

IRVING



LAT. 5, DIST. B, S.S. NO. 21  
 W. B. CARTER CONTRACTOR  
 L. K. WHITE CITY ENGINEER  
 PROJ. NO. C20-44, NOV. 16, 1950  
 BOOK NO. M-13

CONSTRUCTION RECORD						SERVICE RECORD						
STATION	ELEVATION		Depth	MANHOLE	4-INCH "Y" BRANCHES		No. of Permit		House Number		DATE OF PERMITS	
	Ground	Grade			North West	South East	North West	South East	North West	South East	North West	South East
0+00	109.4	102.91	6.49	0+00 Exist'g MH.	0+75.0	0+72.0	#5452	#1788	1056 S. Richmond	1059 S. Richmond	8-2-51	7-3-52
1+00	109.2	103.01	6.19		1+02.0	1+02.0	2462	16398	2602-04	10525	11-21-62	
					+26.2	1+23.2	#5375	#4845	Edwards	Richmond	7-26-51	6-4-51
					+53.7	+50.7	23156		10475	949 S.	5-16-89	
					+75.7	1+72.7	#5374	#4844	Edwards	Richmond	7-26-51	6-4-51
2+00	110.1	103.11	6.99		2+06.3	2+03.3	12028	200275	10425	943 S.	9-14-84	2/10/01
					+31.2	+28.2	#5373	#4842	Edwards	Richmond	7-26-51	6-4-51
					+55.6	+52.6		#4841		Richmond		6-4-51
					+79.8	+76.5	#5372		Edwards		7-26-51	
3+00	110.8	103.21	7.59		3+00.0	3+04.4						
3+00.0	110.8			3+00.0	3+04.4	3+17.1						
					3+31.2	3+17.1	#5371		1032 S. Edwards		7-26-51	
					3+31.2	3+37.7		#6135		Richmond		8-11-53
					3+54.0	3+37.7	#2027	1173	1026 S. Edwards	see below	4-24-02	
					4" 40 PVC 77.5	3+87.4		#4840		Richmond		6-4-51
4+00	111.3	103.31	7.99		4+02.2	4+27.3	#1132	#1131	1020 S. Edwards	1023 S. Richmond	5-5-52	12-4-90
					+30.3	4+27.3						3-5-52
					+54.7	+51.7	#1135	#1130	1014 S. Edwards	1017 S. Richmond	5-5-52	5-5-52
					+79.1	+76.1						
5+00	111.1	103.41	7.69		5+07.0	5+04.0	#1134	#1129	1010 S. Edwards	1011 S. Richmond	5-5-52	5-5-52
					+28.6	+25.6						
					+53.7	+50.7		#1991		1007 S. Richmond		7-24-52
					+75.4		3129		2655	Richmond	11-16-50	
5+99.4	110.4	103.51	6.89	5+99.4	5+94.7							
6+00	110.4											
7+00	110.2	103.61	6.59		7+06.1	7+15.2		#3734		2535 S. Richmond		7-2-65
						+34.6		#3140				11-17-50
						+79.4		#1954				4-24-85
8+00	110.1	103.71	6.39		8+04.0	8+38.3	#2135	#1358	2620	Richmond	8-12-52	3-19-54
					8+38.3	8+35.3		#4438		845 S. Richmond		4-24-85
						+55.3		#3117		Richmond		10-28-65
						+83.1		#758		Richmond		9-27-64
9+00	110.1	103.81	6.29		9+28.1	9+33.6		#3094		831 S. Richmond		4-3-52
9+28.1	109.9	103.84	6.06	9+28.1	9+33.6	9+33.6		#3174				5-18-50
						+82.4		#1396		Richmond		5-27-52
10+00	110.0	103.91	6.09		10+06.6	10+28.2		#3651		811 Richmond		11-19-59
					10+28.2	+56.0						
					10+78.1	10+78.1		#2658		817 Richmond		11-19-59
11+00	110.0	104.01	5.99		11+05.1	11+27.3	2003-02169	2653	823 A see below		8-20-03	
	110.40	104.03	6.1	11+27.2	11+27.3	+54.5	#2659		Richmond		11-19-54	
						+78.9	57116		Richmond		11-19-54	
12+00	110.0	104.11	5.89		12+03.7	12+03.7			Richmond R		8-9-76	
12+03.7					12+03.7	+28.4						
12+48.2	110.3	104.16	6.14	12+48.2	(Stub East)							

Rep-2001-00275-217101-1043 S Richmond-Irwin Pkg- Irwinco, 2H22, 2V45, tied to claytile 3' from main ditally cut  
 2002-01173 4124102 1026 S Richmond-Wichita Exc-Wye repair 77' N of M# 3100 (3+77) 4" PVC, (TWINCO, 1V2-  
 2003-02169-8120103-823 Richmond-Wilks + Assoc -4" PVC 40- Replaced all but lower 10' 1/4" fall  
 shallow- 4" twin co @ house- No alley cut

2002-03010  
 Repair C48619-825 S. Richmond R 3-10-75-8+24.6-RotoRooter 11/6/02 4" PVC 40 4" TWIN co @ house  
 Top C47045-2620 McCormick (pdr) 10-15-74-Joe Matthews (7+26.1)  
 Top C46772-2620 McC Cormick (addr) 9/23/74-Joe Matthews (7+87.2)  
 B3735-top (855 S Richmond) 7-2-65-Roger Pkg (7+48.1) 4-11-74 C44402-f. Spaulding  
 Top - #5662-Rendall Hamburgler, 2609 McC Cormick, 6-26-53  
 #1114-Setting large trailer - 855 S. Richmond - 6-4-54 - V. H. Patton (Trailer not there)  
 #12638- " " Trailer - 2620 McC Cormick - 4-12-60 - Al Henning (8+54)  
 #14899-Trailer - 2609 McC Cormick P. Laska 10-30-61  
 #17259-2620 McC Cormick - Smith Pkg - 6-14-63 (Top 8+92.1)  
 #17260-2620 McC Cormick - Smith Pkg - 6-17-63 - by 7+96.1  
 S.C. C47044-2609 McCormick Joe Matthews - 10-15-74 (7+52.1)