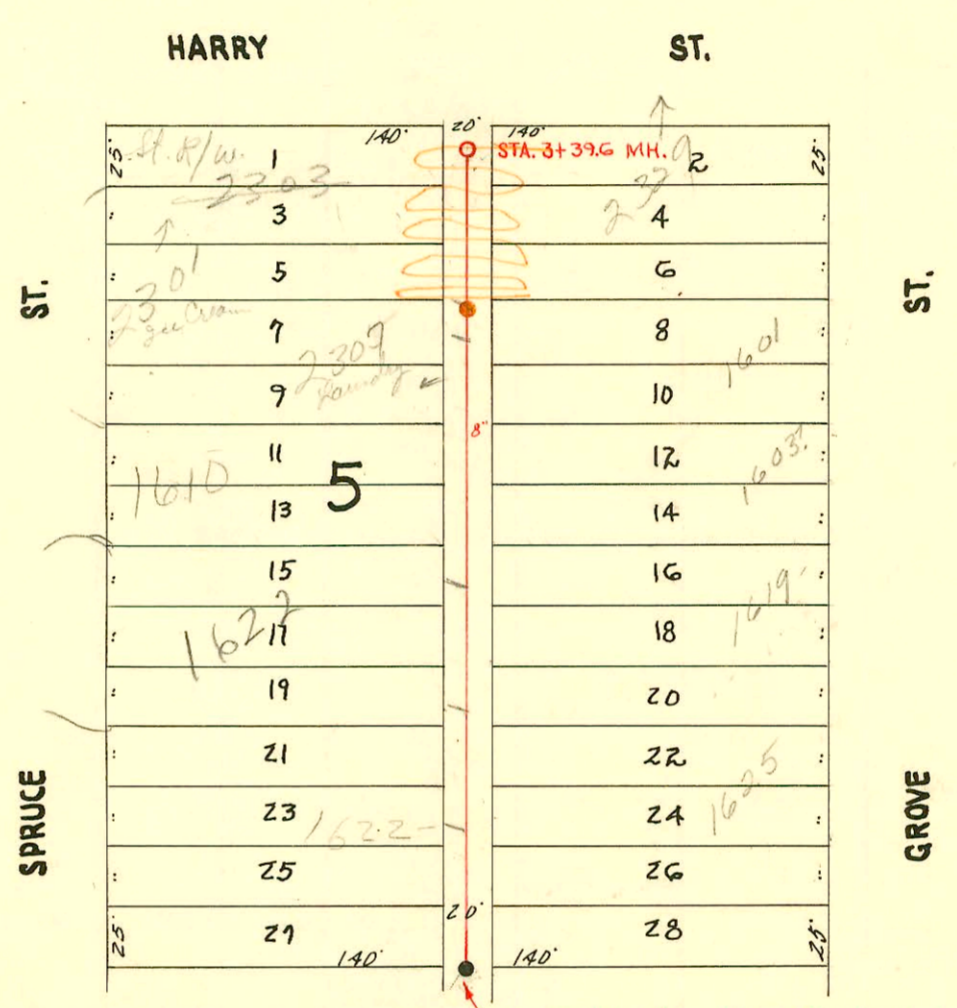


SERVICE RECORD CONSTRUCTION RECORD

N

1" = 80'



Sta. 0+00 Existing MH, 350' So. of S. L. Harry.

CHANGES BY STATE HWY DEPT
BOOKED 8-6-77 AS BUILT PLAN

LAT. 15, DIST. A S, S. S. NO. 12
CITY OF WICHITA, KANS.
L. K. WHITE - CITY ENGINEER
M. K. EBY - CONTRACTOR
PROJ. NO. C 20-68, FEB. 1951
BOOK NO. M-17

CONSTRUCTION RECORD						SERVICE RECORD						
STATION	ELEVATION		Depth	MANHOLE	4-INCH "Y" BRANCHES		No. of Permit		House Number		DATE OF PERMITS	
	Ground	Grade			North West	South East	North West	South East	North West	South East	North West	South East
0+00	101.6	92.68	8.92	0+00 Existg MH.	0+13 ±	0+56 ±	3198 #11022	0+59 ±	1626 S. #1625 Spruce	1625 S. #1625 Spruce	5-5-51	3-30-65
1+00	101.7	92.78	8.92		1+06 ± +57 ±	1+09 ± +60 ±	4125	1+09 ± +60 ±			3-5-51	
2+00	101.7	92.88	8.82		2+33 ± 2+59 ±	2+07 ±	040544 069198	2+07 ±	1601 S. #1601 Spruce		8-10-73 11-29-78	
3+00	101.9	92.90	9.00		(6" on 8" Y ²) → +74 ±	2+71 ±		2+71 ±				1-31-74
3+39 ±	101.3	93.02	8.28	3+39 ±								10-17-56

#1071 - Sep - 1619 S. Spruce - 5-1-52 - Simmons Pkg. Co. (B) Reddi Ind 2006-00481
 ±2574 - Sep - 1610 S. Spruce - 9-24-56 - Al Henning (1+93.6)
 041963 B2859 - Repair 2301 E. Hwy - 2-17-64 - Fredrick Celj - (2+40.4) - C L Rulledge 10-30-78
 B3172 - Seal off - 1625 S. Spruce - 3-30-65 - Al Henning
 (see Book E-138 for original permit)