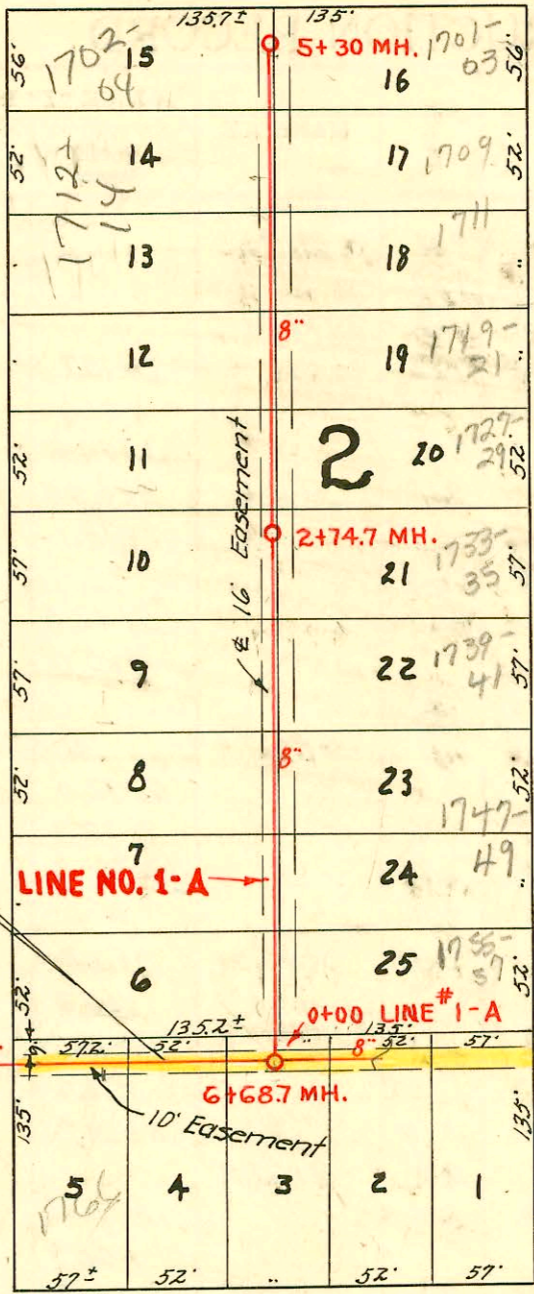
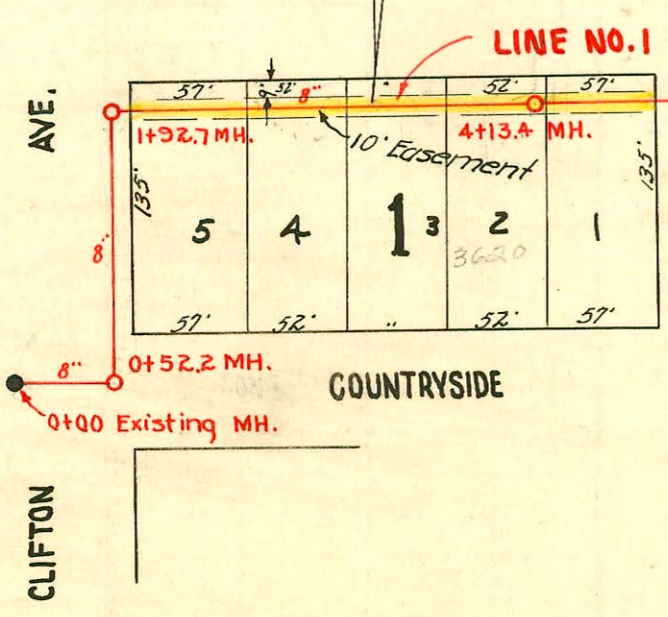


OSIE ST.

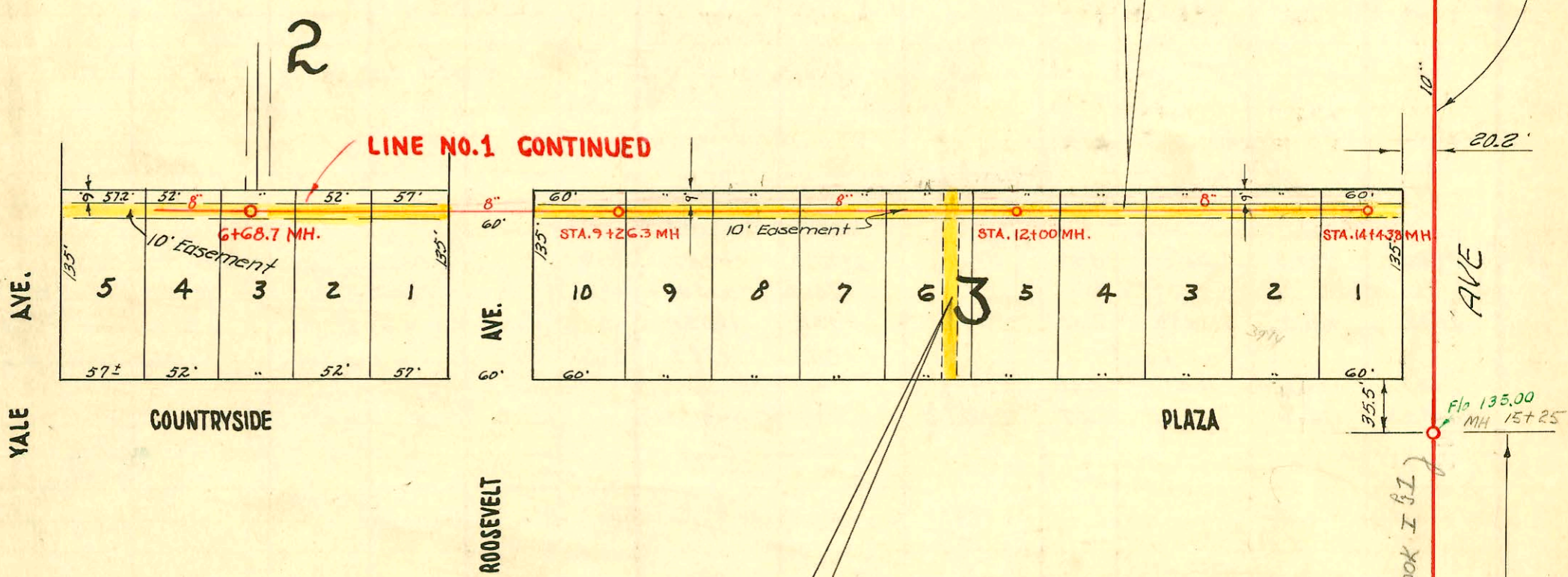
RECORD



April 2, 1951
 SEWER EASEMENT #2480. Roland J. King and Roselind J. King his wife do hereby grant and convey an easement of ten (10) feet for the purpose of construction and maintenance of a sewer in Block one (1) and Block two (2) of Grandview Heights, on adn. to Wichita, Sedgwick County, Kansas, as follows:
 Said easement's North line being nine (9) feet South of the North Property line of all lots in Block one (1), and lots one (1), two (2), three (3), four (4) and five (5) in Block two (2), and said easement's South line being nineteen (19) feet South of the North property line of all of the aforementioned lots. Signed this 16th day of November, 1950.



April 2, 1951
 SEWER EASEMENT #2481. The Perm - Art Homes, Inc. does hereby grant and convey an easement of ten (10) feet for the purpose of construction and maintenance of a sewer in Block three (3) of Grandview Heights, an addition to Wichita, Sedgwick County, Kansas, as follows:
 Said easement's North line being nine (9) feet South of North property line of all lots in Block three (3), and said easement's South line being nineteen (19) feet South of North property line of said lots. Dated this 16th day of November, 1950.



EASEMENT # 2476. Dated March 19th, 1951, From DERM-ART HOMES, INC. Said easement's west line being twenty (20) feet West of the east line of Lot six (6), and said easement's East line being ten (10) feet west of the east line of Lot six (6). All in Block Three (3), in Grandview Heights, on addition to Wichita, Sedgwick County, Kansas. Said easement extends North to the North line of said lot and to the South line of Lot parallel to its East line.

LAT. 8, SUBMAIN W, SANITARY SEWER NO. 12
 IN GRANDVIEW HEIGHTS ADDITION
 PRIVATE JOB, DEC. 4, 1950
 BOOK NO. M-10
 W. B. CARTER



See Bk. I of I 105

