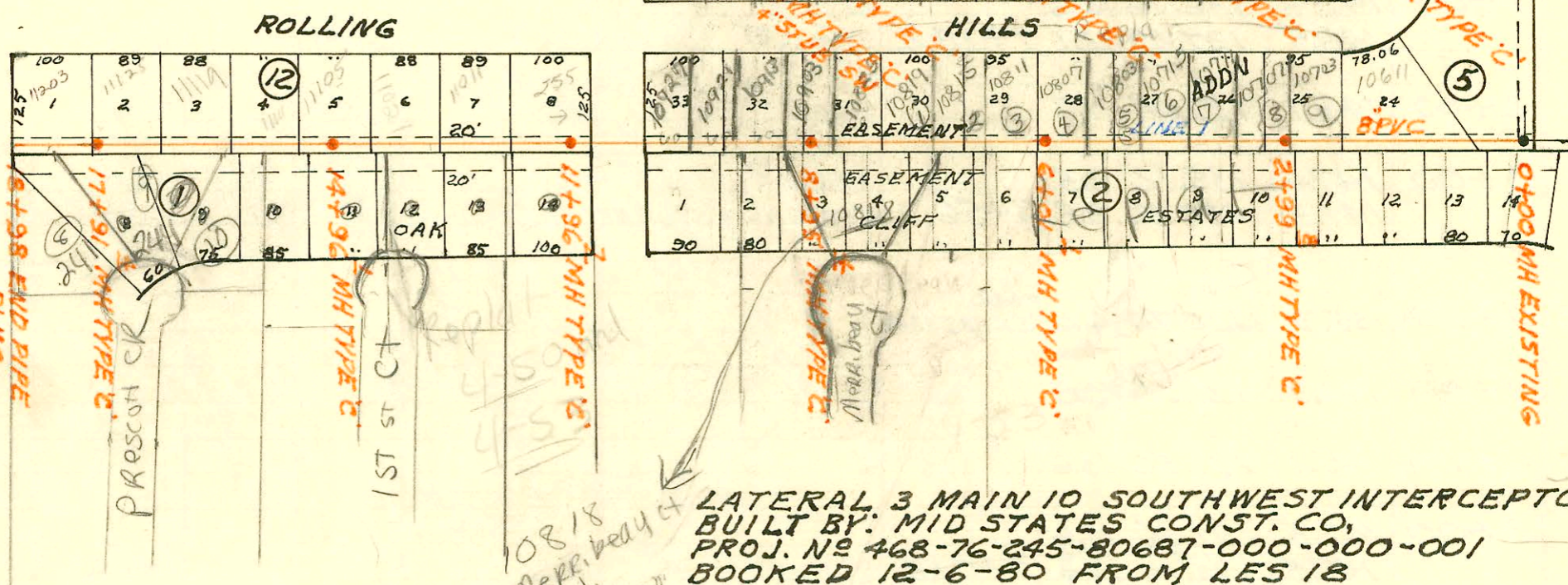


SCALE 1"=200'



10818
Merrill body of
This lot can
connect to
sewer in rear
with no FTR
fee per Gene Earth
Asst City Engineer
as this lot taken
into private project
in private project
349 PPS (607861)
6/24/93
BR

LATERAL 3 MAIN 10 SOUTHWEST INTERCEPTOR
BUILT BY: MID STATES CONST. CO.
PROJ. NO 468-76-245-80687-000-000-001
BOOKED 12-6-80 FROM LES 18

4-50

CONSTRUCTION RECORD

SERVICE RECORD

STATION	ELEVATION		Depth	MANHOLE	4-INCH "Y" BRANCHES		No. of Permit		House Number		DATE OF PERMITS	
	Ground	Grade			North West	South East	North West	South East	North West	South East	North West	South East
LAT 3 MAIN 10 SWI (CONT'D)												
L2 CONT'D 2+00	145.7 146.6	132.70 132.99	13.0 13.6		2+01.7 tap	2+01.7 tap	91-2275-7 24933		10703 PAR	10702 Rolling Hills	5-24-91	3-15-90
3+00	146.9	133.10	13.8		2+77.7 tap	2+98.2 tap	92-828-7 91-3625-7		10707 w. PAR	10706 Rolling Hills 10710 w. Rolling Hills	6-3-92	10-25-91 4-20-90
4+00	147.6	133.50	14.1		3+71 (N) Riser	3+65 (S) Riser	92-618-7		10711 w. PAR		4-28-92	
5+00	147.5 147.5	133.90 133.95	13.6	5+12.3	4+38.3 TAP	4+25.3 TAP	25204	26146	10715 w. PAR	10714 Rolling Hills	4-23-90	9-18-90
6+00	147.4	134.30	13.1		5+51.3 TAP	4" SDR 35 5+04.3 TAP	25305	91-31422-7	10807 PAR	10802 Rolling Hills	5-10-90	8-30-91
7+00	146.7 146.8	134.70 134.91	12.0 11.9	7+53.6	5+06.3 TAP	6+23.3 TAP	92-906-7 22140	24940	10811 PAR	10806 Rolling Hills 10812 Rolling Hills	1-15-92 11/24/88	3-14-90 4-10-91
8+00	147.3	135.10	12.2		7+19.6 TAP	8+94.6 tap	25542	24244	10815 w. PAR	10814 Rolling Hills	6-12-90	11-07-89
9+00	148.3 149.0	135.50 135.88	12.8 13.1	9+94.3	8+11.6 tap	9+31.6 tap	92-3562-7	38003.7	10819 w. PAR	10818 Rolling Hills	3-12-92	11-22-91
10+00	149.3 149.3	135.90 136.00	13.4 13.3	10+25.8	8+24.3 TAP	9+12.3 TAP	24273		10902 Rolling Hills	10906 Rolling Hills		11-3-89 4-26-91
					8+96.3 TAP	9+70.3 TAP	25953	23373	325 W. Mars	10910 Rolling Hills	8-13-90	6-19-89
						4" STUB SW	21346			10914 Rolling Hills		11-22-89
LINE 2A												
0+00	149.0	136.08	12.9	0+00=9+94.3 LINE 2	0+44.0		91-1884-7		318 Parkdale		3-11-91	
1+00	149.4 149.5	136.76 137.29	12.6 12.1	1+78.2	0+87.2 TAP	1+24 tap	24272	92-1910-7	326 Parkdale	333 Mars	11-13-89	2-11-92
2+00	149.1	137.44	11.7		1+83.2 TAP		22905		334 Parkdale		4-11-89	
3+00	147.6 147.3	138.12 138.50	9.5 8.8	3+56.3	2+53.2 TAP		22904		342 Parkdale		4-11-89	
					3+24.3 TAP	2+59.2 TAP	26424	22141	350 Parkdale	341 Mars		10-31-90
					4" STUB NW	4" STUB NE	20684	91-2718-7	352 Parkdale	349 Mars	2-9-88	11-24-87
									358 Parkdale	357 Mars	5-16-88	7-23-91
LINE 3												
0+00	135.3	130.70	4.6	0+00 EXISTING								
1+00	140.9	131.10	9.8									
2+00	145.1	131.50	13.6									
3+00	147.5 147.5	131.90 132.10	15.6 15.4	3+01.2	2+68.2 tap		11708		331 Parkdale			3-08-84
	147.3	132.37	14.9	3+68.4	4" STUB NE		1713		337 Parkdale		11-5-80	
4+00	147.2 147.0	132.50 132.57	14.7 14.4	4+16.5	4" STUB N							
LINE 3A												
0+00	147.3	132.58	14.7	0+00=3+68.4 LINE 3	0+72.6 (N) Riser	0+78.0 (S) Riser	19740		10803 w. Shade	10712 w. PAR		11/24/87
1+00	146.6	133.18	13.4		1475.9 tap	1+71.9 TAP	20778	24378	10802 w. PAR	10806 w. PAR	6/2/88	11-24-89
2+00	146.6	133.78	12.8		1+75.9 tap	1+71.9 TAP	91-3432-7	24361	10809 w. Shade	10806 w. PAR	10-4-91	11-27-89
3+00	142.7 142.6	134.38 134.51	8.3 8.1	3+20.9	2+55.0 TAP	2+59.9 TAP	18152	23501	10815 Shade	10810 w. PAR	4-21-87	7-7-89
					4" STUB NW	4" STUB SW	9553	22135	324 Mars	320 Mars		11-24-88
LATERAL 9 MAIN 21 WAR INDUSTRIES SEWER												
L1 0+00	181.9	170.64	11.3	BEGIN PIPE	0+40.0 TAP		18241		8731 E. Parkmont		5-4-87	
1+00	179.2 179.0	171.34 171.41 171.51	7.9 7.6 7.5	1+10	0+38.5 TAP		18265		8733 E. Parkmont		5-4-87	
2+00	180.0	172.14	7.9		0+85.0 TAP		10571		8734 E. Parkmont		11/2/87	
3+00	180.7	172.84	7.9		1+90.0 TAP		25499		2314 R Dalton		6-8-85	
					1+92.0 TAP		13676		2320 Dalton		5-1-85	
					3+98.8 TAP		13484		2328 Dalton		4-16-85	

CONT'D NEXT PAGE

