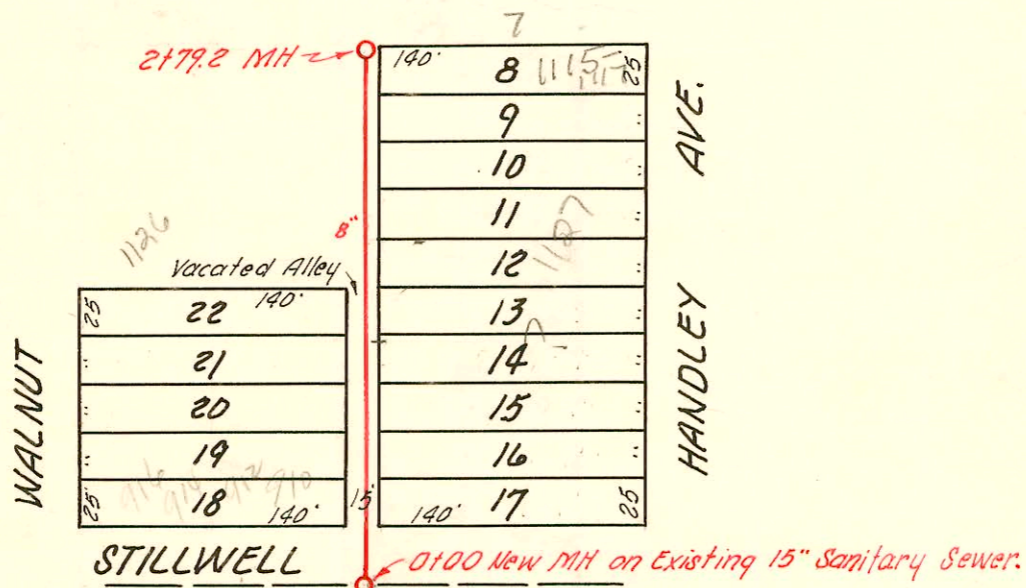


LAT. O, DIST. E, S. S. 21

W. B. CARTER, MARCH 1, 1951

BK. NO. M-13, PROJ. NO. C20-73



LAT. W, DIST. E, S. S. 21

W. B. CARTER

JAN. 29, 1952

BK. M-14,

PROJ. NO. C 21 - 82

CONSTRUCTION RECORD

SERVICE RECORD

STATION	ELEVATION		Depth	MANHOLE	4-INCH "Y" BRANCHES		No. of Permit		House Number		DATE OF PERMITS	
	Ground	Grade			North West	South East	North West	South East	North West	South East	North West	South East
0+0	104.4	100.66	3.74	0+00 Existg MH	0+85.4	0+82.4	#1999-442 #4486	#4489	1656 S. Vine 1657 S. Millwood	1679 7-27-51	4-27-51	
1+0	104.2	100.76	3.44		1+33.9	1+30.9	#1677 #4487	#4515	1650 S. Vine 1645 S. Millwood	11-3-80 4-27-51	5-2-51	
					1+83.4		#4488		1646 S. Vine	4-27-51		
2+00	105.5	100.86	4.64		4" SCH 40 2+35.0	2+10.5	#2000-01345 #2197	1745 #1519 #12-24-77	1640 S. Vine 1645 S. Millwood 1641 S. Millwood	10-1-00 10-6-54	8-12-54 7-24-92 11-15-54	
3+00	106.5	100.96	5.54		2+75.0	2+72.0						
					3+02.0							
3+11.2	106.4	100.97	5.43	3+11.2		3+17.5	#5066		1635 S. Millwood		6-21-51	
					3+60.7	3+57.7	#5761		1630 S. Vine	9-6-51		
4+0	106.1	101.06	5.04		4+03.7	4+06.7						
					4+61.0	4+64.0	#4459		1625 S. Millwood		4-25-51	
5+0	106.0	101.16	4.84		5+07.0	5+04.0	#2958		1608 S. VINE	12-15-54		
						5+32.0	11578		1611 S. Millwood		7-12-54	
6+0	105.6	101.26	4.34			6+02.9	14857		1705 W. HARRY		10-20-61	
6+23.0	105.4	101.28	4.12	6+23.0								
					Y West	Y East						
0+0	104.2	96.60	7.6	0+00 New MH.	0+55.0	0+52.0	97-19322 #1391		1139-41 S. Handley	10-3-47	5-26-52	
1+0	105.5	96.70	8.8		0+72.2	0+77.0	97-19321 #6430		1134 S. WALNUT	10-3-47	5-26-52	
					1+06.0	1+03.0	97-19321 #1389		1133-35 S. Handley	4-12-52	5-26-52	
					1+27.3	1+27.3						
					1+54.0	1+54.0						
2+00	104.9	96.80	8.1		1+81.1	1+78.1	97-19317 #7401		1120 S. WALNUT	10-3-47	5-26-52	
					2+02.8	2+02.8	#1394		1121-23 S. Handley	2-5-52		
					2+27.0	2+24.0						
					2+51.1	2+51.1						
2+79.2	105.6	96.88	8.7	2+79.2	2+75.0	2+72.0	2001-01123 ?		1115-17 S. Handley	see Below	5-8-01	

CAT. W. DIST. E. S. S. #21

2001-01123-Steel-1115-17 S Handley- Bamnes Pibg- 4" SCH 40 - Tied to claytile - ITWIN CO, 1122, 2445

Rep. 2000-01345- 1640 S Vine - 4" b/c - Morris Ditch- Repl Lower 20' only - ITWIN CO, NO BERDS, DIRT ALLEY CAT

- #649 - Tap 1105 S. Handley Pibg - 4-16-54
- #4458 - Tap - 1616 S. Vine - 4-25-51 - Brodie Pibg. Co.
- #5714 - Tap - 1625 S. Millwood 8-20-51 - Brodie Pibg. Co.
- #1942 - Tap - 1612 S. Vine 7-22-52 Brodie Pibg. Co.
- #1392 - Tap - 1713-15 S. Handley 5-26-52 - Joe Mc Donald
- #1392 - Tap - 1717-19 S. Handley 5-26-52 - Joe Mc DONALD
- 1630 - Tap - 1632 S. Vine - 7-9-63 - Brodie Pibg. (3+21.2)