

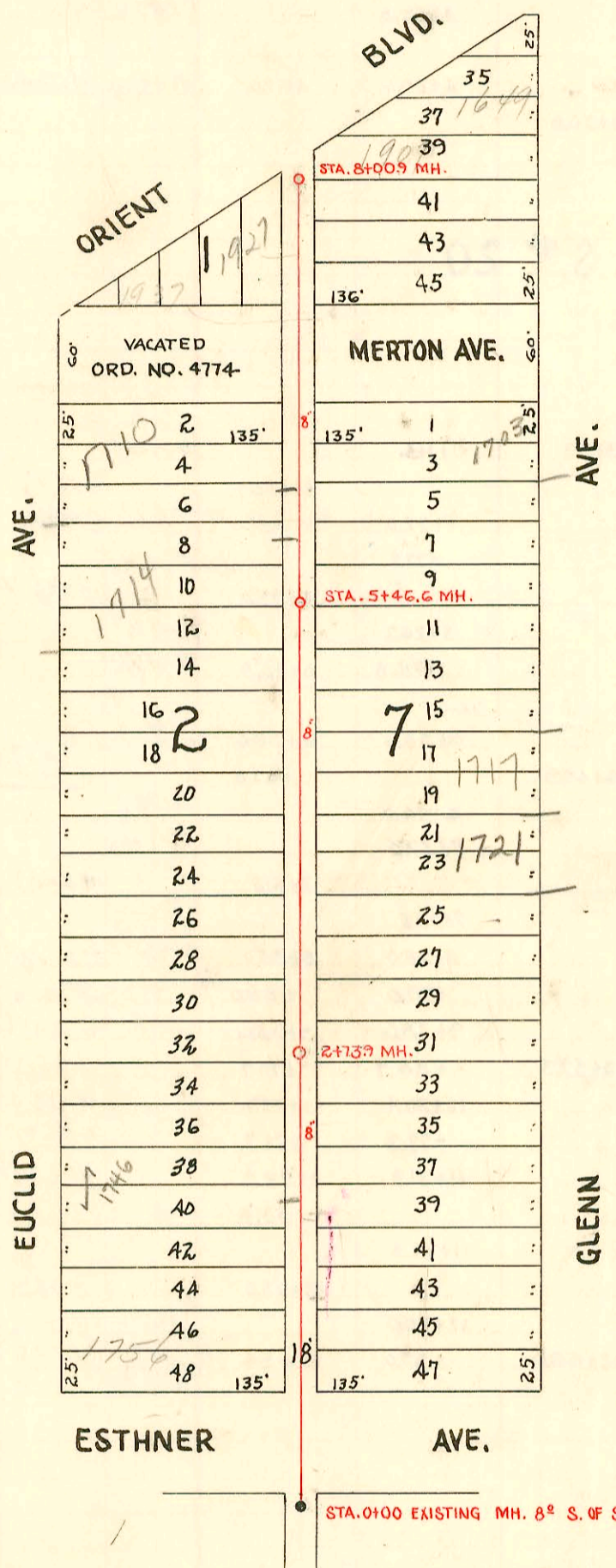
SERVICE RECORD

CONSTRUCTION RECORD

DATE OF SERVICE	DESCRIPTION	BY	REMARKS	ELEVATION	STATION
-----------------	-------------	----	---------	-----------	---------



Scale 1"=100'



LAT. N. DIST. E, S. S. #21
 City of Wichita, Kansas
 L. K. White City Engineer
 W. B. Carter Contractor
 Date Booked March 2, 1951
 Proj. No. C20-65, Book M-13

CONSTRUCTION RECORD

SERVICE RECORD

STATION	ELEVATION		Depth	MANHOLE	4-INCH "Y" BRANCHES		No. of Permit		House Number		DATE OF PERMITS			
	Ground	Grade			North West	South East	North West	South East	North West	South East	North West	South East	North West	South East
0+00	109.2	100.26	8.94	0+00 Exist'g MH.										
					0+87.5	0+74.7	#5540		1756 Euclid		8-14-51			
1+00	110.2	100.46	9.74											
					1+27.8	1+24.8	4463		1749 S. Glenn		4-14-51			
					1+52.8	1+49.8	#3670	#16415 Euclid	1750 R Euclid					
2+00	112.3	100.66	11.64		1+80.5	1+77.5	#3670	#769 Euclid	1746 Euclid	1741 S. Glenn (1745)	S.O. 1-5-53	11-28-62 5-29-51		
					2+45.5	2+21.2	#4571	#5073	1742 Euclid	1739 S. Glenn	5-7-51	6-23-51		
2+73.9	114.0	100.81	15.19	2+73.9	2+44.0									
					2+98.7			5007		1735 S. Glenn		6-16-51		
3+00	114.5	100.86	15.64											
					3+01.7		1821		1730 S. Euclid		8-24-54			
					3+26.0	3+23.0								
					3+51.1	3+48.1		4470	1731 R S. Glenn		4-25-51			
					3+76.2	3+73.2	3718		1738 Euclid		1-8-53			
4+00	114.4	101.06	12.80		4+06.6				1721 S. Glenn		10-17-73			
					4+35.6			41748 38850 6739	1717 S. Glenn	S.O.	5-8-73 12-6-51			
					4+66.9	4+69.9								
5+00	110.5	101.26	9.24		4+97.5	4+94.5		3146	1715 S. Glenn		1-10-55			
5+46.6	109.9	101.35	8.55	5+46.6	5+24.4	5+21.4	C43475	#6073	1714 Euclid	1711 S. Glenn	2-13-74	10-9-51		
					5+55.6	5+52.6								
6+00	110.3	101.46	8.84		5+81.0	5+84.0	#4392	#5080	1710 S. Euclid	1707 S. Glenn	4-18-51	6-25-51		
					6+15.1	6+12.1	4575		1720 S. Glenn		5-8-51			
					6+49.0		C62269	4913	1703 L-S.O. S. Glenn		3-27-74 6-8-51			
					6+70	6+67	17429	4081	1937 Orient	1663 S. Glenn	7-22-77 7-22-63	4-7-55		
7+00	111.4	101.66	9.74		7+03.0		4963		1907 Orient		5-31-55			
					7+33.3			#4509		1907 Orient		6-1-51		
					7+79.7			#4508		1949 S. Glenn		6-1-51		
8+00														
8+00.9	110.3	101.86	8.44	8+00.9										

2003-00944 4/10/03 (1710 S Euclid) HD Hills - 4" clay tile line, 5' to 25.5' N of SPL + 19' from main

N.C. - 1717 S. Glenn - 1-28-74 - C43185 (4+35.6)

110-16414 - 1746 S. Glenn - 11-28-76 - for [unclear] ()

C 45553 - 1703 S. Glenn - 7-2-74 - Ritzelge. (Wye 6+49)

#C10104 tow-trailer - 1907 Orient Blvd. - Home-Lohn Corp. Pkg. 8-19-68 (Cap 7+52.9)

#4961 Cap - 1933 Orient - 3-30-53 - c/o M^o Donald

#4961 - Trailer - 1728 Euclid - 5-31-55 - C. Frank McCay

#4962 - private line conn. 1728 Euclid 5-31-55 - C. Frank McCay

#B 2188 - 1756 Euclid - (trailer) Keith Willard & Sons - 10-23-64 (1+51.9)