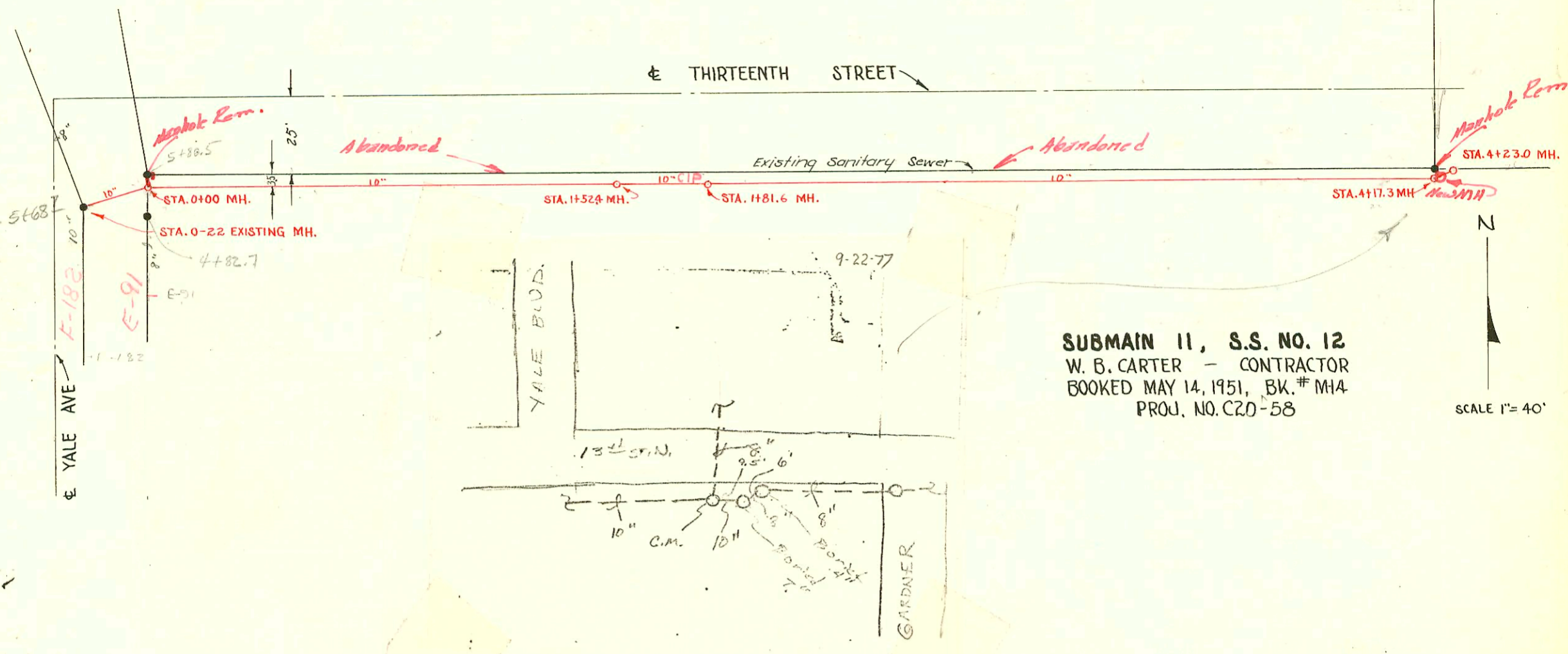


NOTE: Benefit District for Submain 11, S.S. #12 includes all lots and tracts in Ken-Mar Addition.



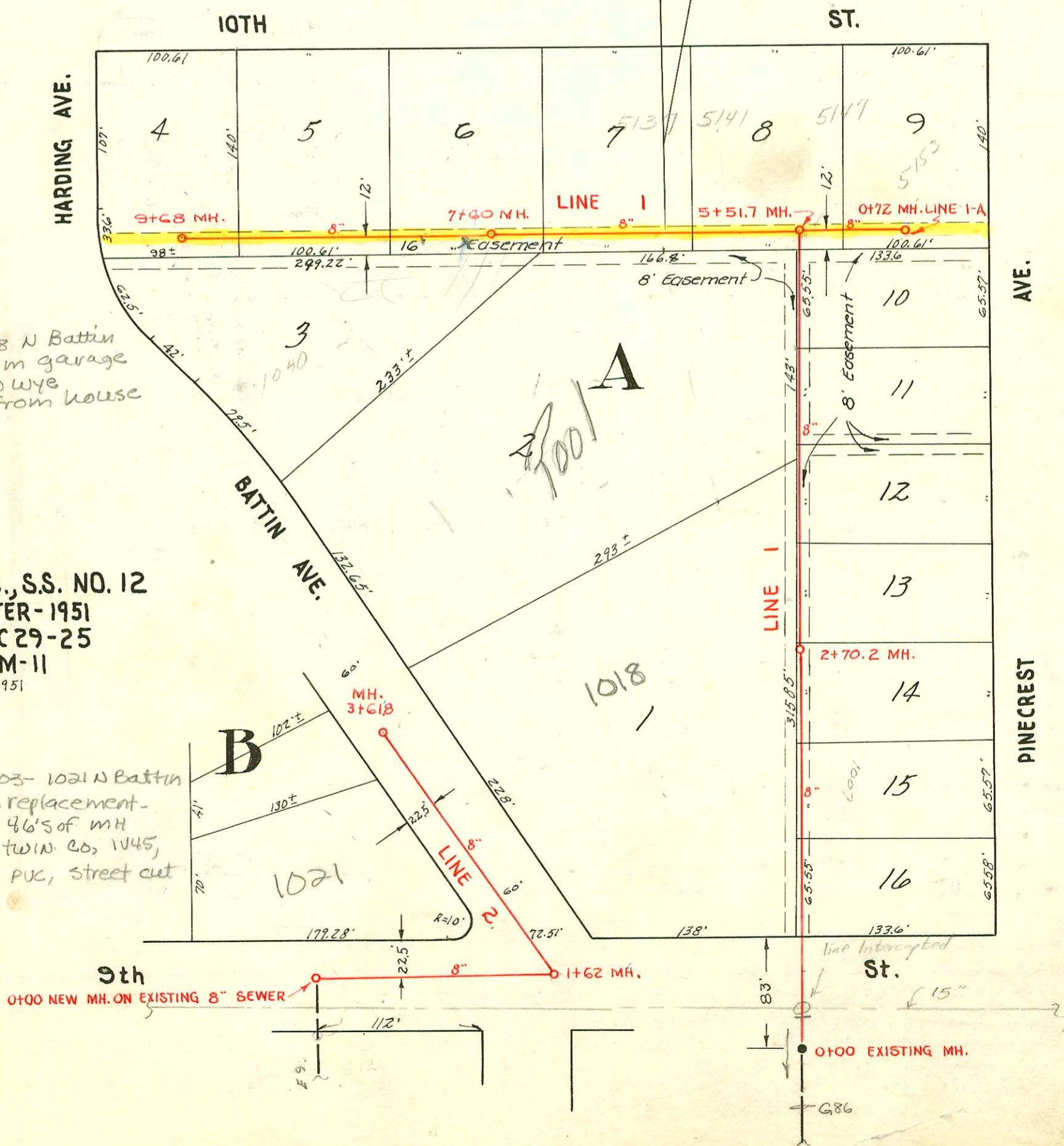
SUBMAIN 11, S.S. NO. 12
 W. B. CARTER - CONTRACTOR
 BOOKED MAY 14, 1951, BK. # M14
 PROJ. NO. C20-58

EASEMENT # 2512, Made September 13th, 1951, From Adolph Bircher, Inc., Aaron W. Wilson Construction Company, Inc. and Ruth E. Moore. An eight-foot (8') sewer easement north of and adjacent to and parallel with the north line of the present eight-foot (8') sewer easement on the rear or south eight feet (8') of Lots 4, 5, 6, 7, 8, and 9, all in Block A of Levitt's Addition to the City of Wichita, Sedgewick County, Kansas.

2003-01161 - 51103 - 1018 N Battin
 Bob Scott - 4" PVC from garage
 to 1145th TWIN CO TO 145th TO WYE
 tied to house sewer 30' from house

LAT. 37, D.C.S., S.S. NO. 12
 W. B. CARTER - 1951
 PROJ. NO. C 29-25
 Bk. # M-11
 Sept. 4, 1951

2003-03296 - 1211003 - 1021 N Battin
 Wichita EXC - Full replacement -
 City wye repair - 46'5" of MH
 3+61.8 (3+15.8) TWIN CO, 1145,
 1145, 1145, 1122 4"40 PVC, street cut



0+00 NEW MH. ON EXISTING 8" SEWER
 1+62 MH.
 0+00 EXISTING MH.

