

TRAP AREA

CLASSEN AVE.

MASON TERRACE

ROSE-MARIE CT.

HYDRAULIC AVE.

GREENWOOD AVE.

VICTORIA ST.

DENKER ST.

GARBER ST.

LULU AVE.

STA. 0+00 EXISTING MH. DIST. Z, S.S. NO. 20 BEGINS

STA. 3+00 MH.

STA. 6+01 MH.

STA. 9+00.3 MH.

STA. 12+01 MH.

STA. 15+20 MH.

STA. 18+34.9 MH.

STA. 21+45 MH.

STA. 22+79.6 MH. END DIST. Z, S.S. #20

Benefit district for Dist. Z, S.S. #20 include all lots and tracts in Graber Addition.

Benefit district for Lat. 2, Dist. Z, S.S. #20 include Blocks A, B, C, and D, in Graber Addition.

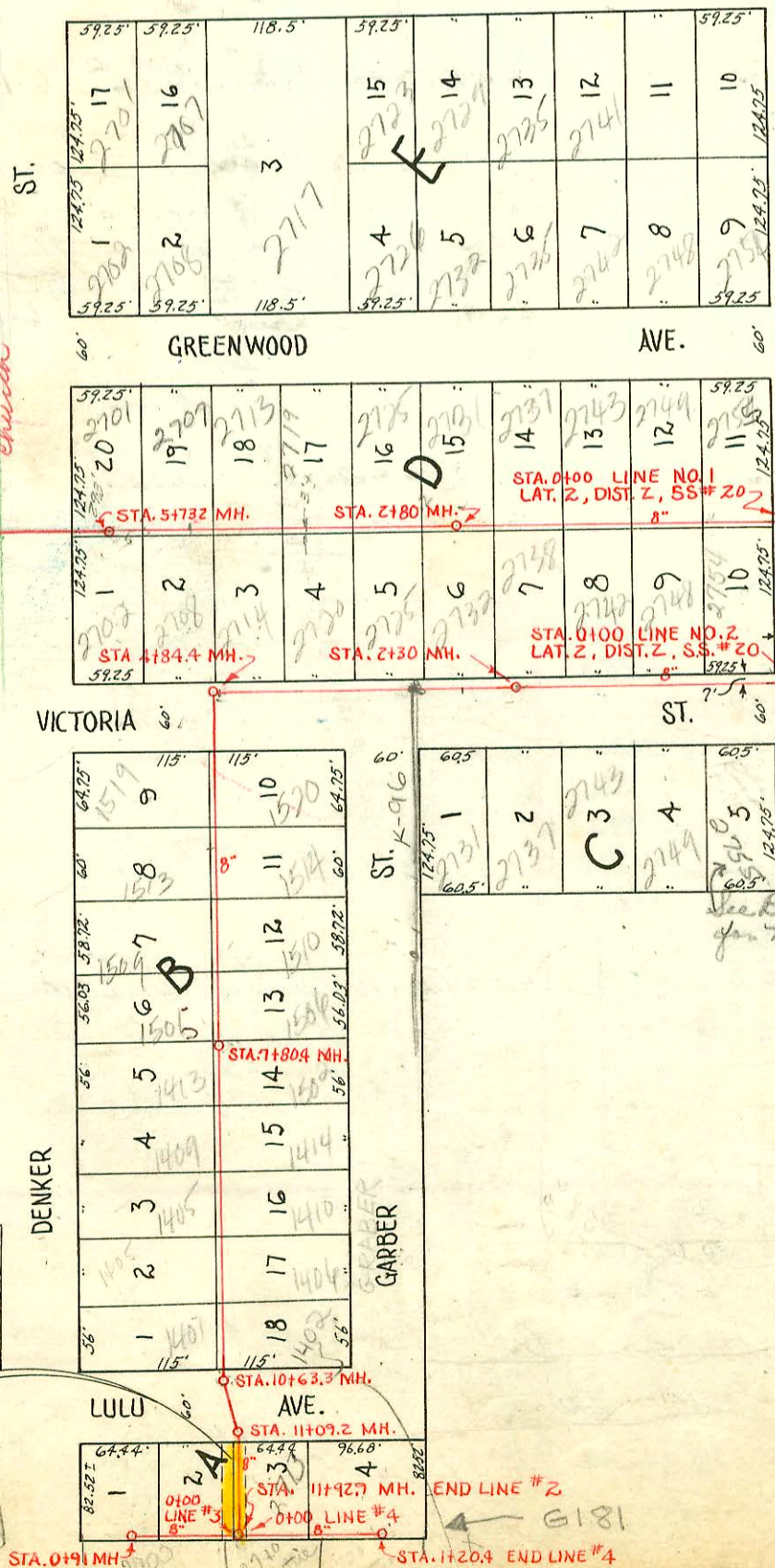
NOTE: All wyes are 6 inch.

See Vinson or Brewer for explain 10' x 10' MH 1550 Denker Church

R-2000-00932-2719 LULU 4 1/2" 700 - Simple + Son - 4" SCH 40 - Tied back to tile, CLAY tile within 7' of Main.

See Book R-96 for New Conn

EASEMENT # 2477, Made March 14th, 1951. By Henrietta G. Graber and Harry Graber. A sixteen foot easement running the east and west length of lots 2 and 3, eight feet being taken from the south side of Lot 2, and eight feet from the north side of lot 3. All in Block A of Graber Addition in Wichita, Kansas.



DIST. Z, S.S. NO. 20
LAT. 2, DIST. Z, S.S. NO. 20
W. B. CARTER, MAY, 1951
BOOKED MAY 29, 1951, BK. S-1
PROJ. NO. C21-8
PROJ. NO. C21-19

