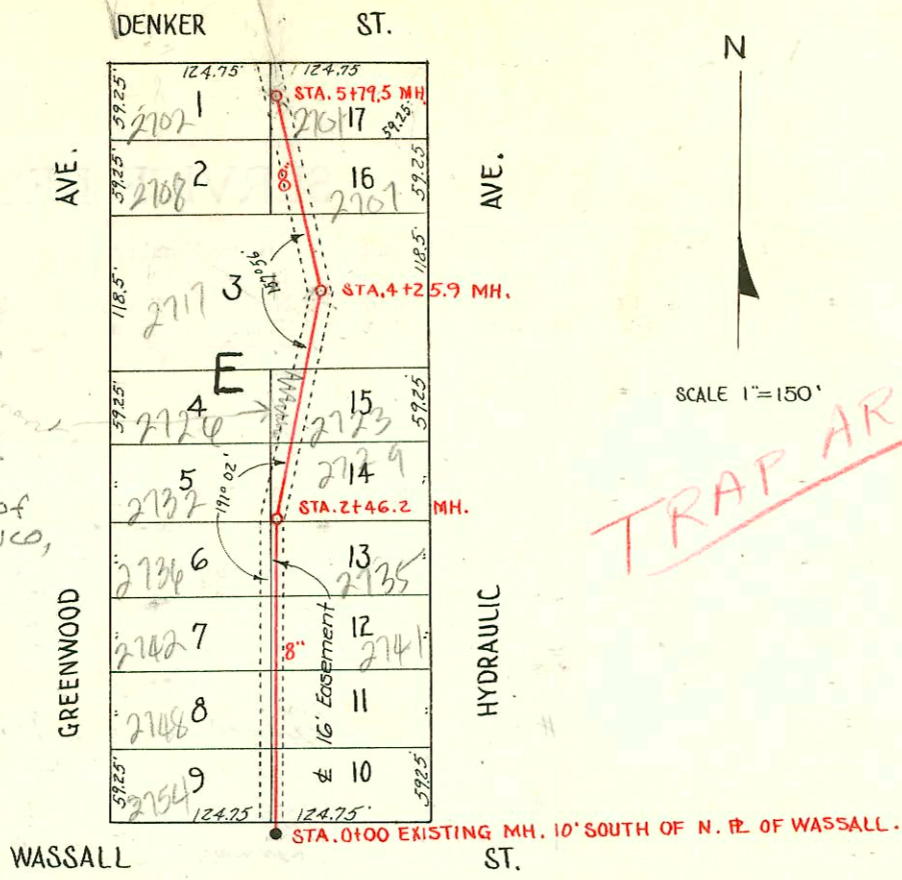
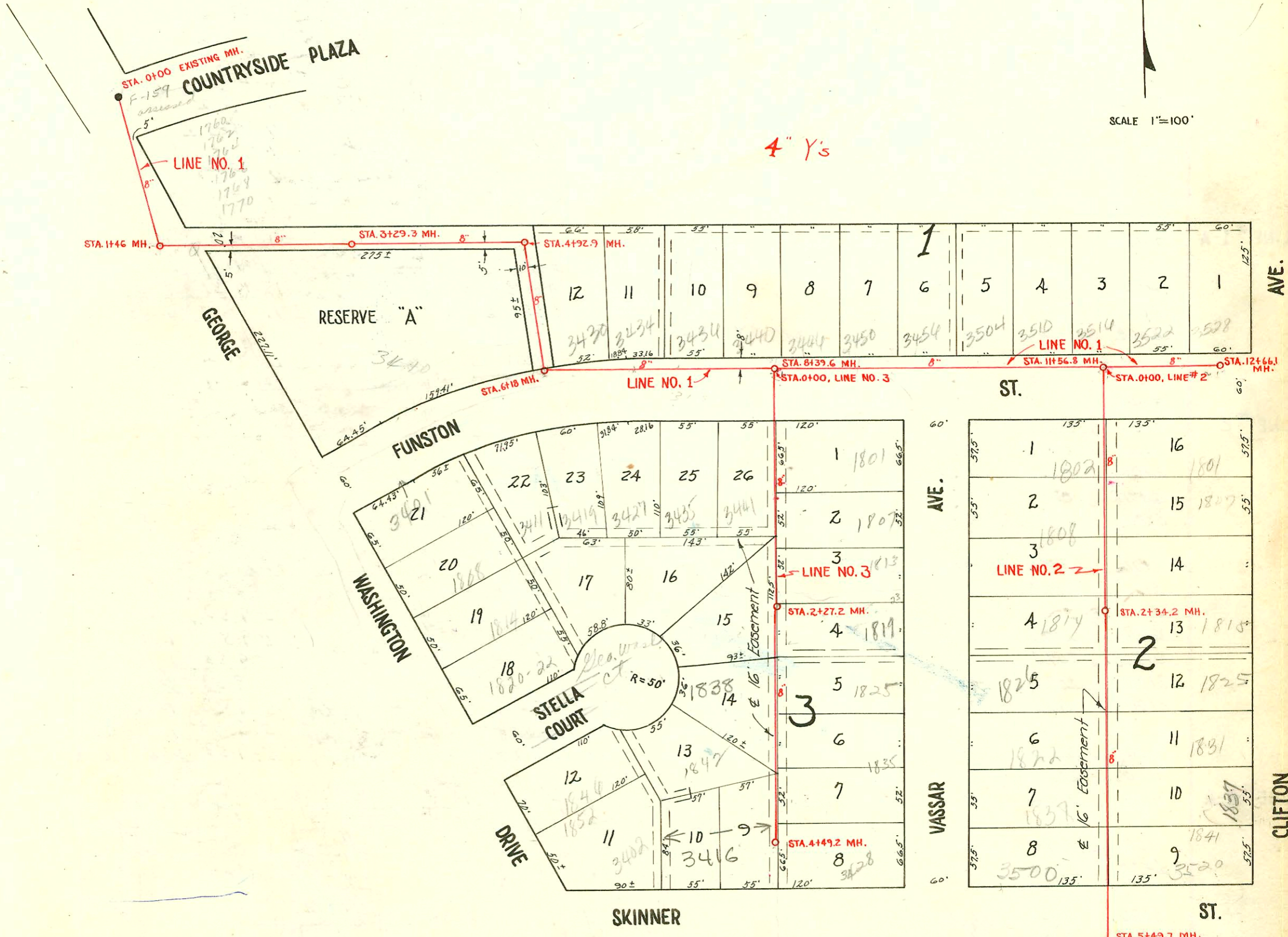


2732 S Greenwood - Repair SWR
2003-00899-4/4/03- A Good Plbr -
city w/repair 6" Preco 20.9' N.E of
MH 2746.2 (2767.1) 4" PVC, 1 TWINCO,
New house trap; 2V22



6" Y's
TRAP AREA
SCALE 1"=150'

LAT. 1, DIST. Z, S.S. NO 20
W. B. CARTER MAY, 1951
BOOKED JUNE 1, 1951, BK. S-1
PROJ. NO. C21-9



4" Y's

SCALE 1"=100'

- 5910- Tap- 3452 Stella Ct - Art Prosser - 7-24-53
- 5023 ✓ 1837 S. Clifton - Harding - 8-7-57
- 8838 Tap 1760-1770 Geo Wash. Dev. Assoc - 12-15-58 4" w/4" 4+85
- 10592 Tap 3500 E. Skinner Kennedy 6-17-59 4" w/4" 4+2.7
- #12058 Tap- 1819 S. Vassar - Reynolds - 12-17-59 - 4" Tap - 5' No. of MH #2+27.2
- #17464- tap - 1807 S. Clifton - V. Lippold - 7-23-63 - 0+98

LAT. 9, DIST. W, S.S. NO. 12
IN KRAK'S ADDITION
W. B. CARTER CONTRACTOR
BOOKED JUNE 6, 1951, BK. #M-11
PRIVATE JOB

CONSTRUCTION RECORD

SERVICE RECORD

STATION	ELEVATION		Depth	MANHOLE	6" INCH "Y" BRANCHES		No. of Permit		House Number		DATE OF PERMITS	
	Ground	Grade			North West	South East	North West	South East	North West	South East	North West	South East
LAT. 1, DIST. Z, S.S. #20 0+00	93.6	88.22	5.4	0+00 Exist'g MH.	0+30.0	0+27.0	#6436	#6551	2754 S. Greenwood	2788 S. Hydraulic	11-13-51	9-25-53
1+00	93.6	88.32	5.3		781.2	778.2	#6435	#7252	2740 S. Greenwood	2747 S. Hydraulic	11-13-51	8-30-54
2+00	93.3	88.42	4.9		2+00.8		#6434	#4923	2740 S. Greenwood		11-13-51	
2+46.2	93.5	88.47	5.0 in 5.0 out	2+46.2			#6433	#1879	2730 S. Greenwood		11-13-51	
3+00	93.4	88.52	4.9		2+67.1	2+64.1	2005-00899		2732 S. R Greenwood	see next	4-4-02	
4+00	94.4	88.62	5.8		3+24.9	3+21.9	#6432	#4898	2726 S. R Greenwood	2723 S. Hydraulic	11-13-51	6-7-51
4+25.9	94.4	88.65	5.7	4+25.9	4+00.3		#6431	#4877	2717 S. Hydraulic		11-13-51	6-7-51
5+00	93.5	88.72	4.7		4+97.2	4+94.2	#4879		2717 S. Hydraulic		6-5-51	
5+79.5	93.6	88.80	4.8	5+79.5	5+62.4	5+59.4	#5168	#5166	2702 S. Greenwood	2701 S. R Greenwood	7-7-51	7-7-51
LAT. 9, DIST. W, S.S. #12 LINE #1	0+00	109.2	7.0	0+00 Exist'g MH.	4" "Y" Branches Y NORTH Y SOUTH							
1+00	108.9	102.22	6.7									
1+46	108.0	102.35	5.6	1+46								
2+00	107.7	102.40	5.3									
3+00	107.5	102.50	5.0									
3+29.3	107.6	102.53	5.2	3+29.3	3+81.2		#445		3217 Cauldhead		3-14-53	
4+00	108.1	102.60	5.5									
4+92.9	107.2	102.69	6.5 in 6.2 out	4+92.9	Y WEST	4+45.1						
5+00	109.0	102.84	6.2		5+31.0							
					+57.9							
					+83.1							
6+00	107.2	102.93	4.2		Y NORTH							
6+18	107.1	103.04	4.0	6+18	6+37.4							
					+88.9							
7+00	108.1	103.13	5.0		7+43.6		#1676		3434 E Juniper		7-6-54	
					+97.7		#3640		3440 E Juniper		12-21-52	
8+00	110.1	103.23	6.9		8+53.0		#2799		3456 E Juniper		10-8-52	
8+39.6	111.2	103.27	8.0 in 7.9 out	8+39.6			#2801		3456 E Juniper		10-8-52	
9+00	113.3	103.43	9.8		9+10.6		#2802		3456 E Juniper		10-8-52	
					+68.5		#6323		3504 E Juniper		9-1-53	
10+00	117.2	103.53	13.6		10+25.6		#5616		3510 E Juniper		6-22-53	
					+77.5		#4743		Parade 3522 E Juniper		4-7-53	
11+00	118.3	103.63	14.7		11+32.4		#2798				10-8-52	
11+56.8	120.7	103.69	17.0 in 13.0 out	11+56.8	+84.4							
12+00	122.3	107.72	14.6		12+37							
12+66.1	125.0	107.79	17.2	12+66.1								
LINE #2	0+00	120.4	16.6	0+00 = 11+56.8 in Line #1	Y WEST	Y EAST	#1588	#3729	1802 S Vassar	1801 S Vassar	6-11-52	1-10-53
1+00	118.4	103.88	14.5		0+73.4	0+70.4						
					1+31.4	1+28.4						
					+86.0	+83.0	#1365		1802 S. Vassar		5-22-52	
2+00	116.1	103.98	12.1		2+44.3	2+41.3	#2803	10810	1814 S Vassar	1815 S Vassar	10-8-52	7-7-59
2+34.2	115.6	104.01	11.6 in 11.5 out	2+34.2	+75.5	+72.5	10348	10756	1826 S Vassar	1825 S Vassar	5-12-59	6-29-59
3+00	114.6	104.18	10.4		3+56.6	3+53.6	#4990	#6397	1832 S Vassar	1831 S Vassar	6-15-51	9-14-55
4+00	112.0	104.28	7.8		4+07.2	4+04.2	#6167		1834 S Vassar		10-19-51	
					+59.4	+56.4	10592	6819	1802 S Vassar	3520 E Juniper	6-10-59	5-7-58
5+00	112.1	104.38	7.8		5+49.7		#4994		3517 E Juniper		6-14-51	
5+49.7	111.4	104.43	6.9	5+49.7	Stub South							
LINE #3	0+00	110.9	7.6	0+00 = 8+39.6 in Line #1	Y WEST	Y EAST						
1+00	109.9	103.47	6.4		0+58.4							
					1+65.0	1+28.4						
					+83	1+80						
2+00	108.8	103.57	5.2		2+32.1							
2+27.2	108.7	103.60	5.1 in 5.0 out	2+27.2	+89.8		12058		1819 S Vassar		12-14-59	
		103.70					#1477		1825 S Vassar		6-2-52	
3+00	108.0	103.77	4.2		3+44.8							
4+00	107.3	103.87	3.4		3+83.9		2003		3416 R Juniper	3428 N Juniper	11-12-03	
4+49.2	107.3	103.92	3.4	4+49.2	4+26.2	4+23.2	#6224	#4975	3416 R Juniper	3428 N Juniper	10-23-51	6-14-51

82083 - Top - 3410 E Juniper - 10-6-64 - Galt McElroy (4+02.3)
 #6913 - Top - 1835 S Vassar - 12-26-51 - Rupp Pkg. Co.
 #1545 - Top - 1825 S Vassar - 6-9-52 - Rupp Pkg. Co.
 #1529 - Top - 3528 E Juniper - 6-11-52 - Rupp Pkg. Co. (12+29.1)
 #2839 - Top - 1807 S Vassar - 10-30-53 - Cherry Pkg. Co. - (Way 1+84 4" SDR35)
 #4744 - Top - 3430 E Juniper - 4-7-53 - Rupp Pkg. Co.
 #3643 - Top - 1801 S Vassar - 1-2-53 - Nichell & Hensley, Inc.
 #2084 - Top - 3410 E Juniper - 10-6-64 - McElroy (3+10.7)