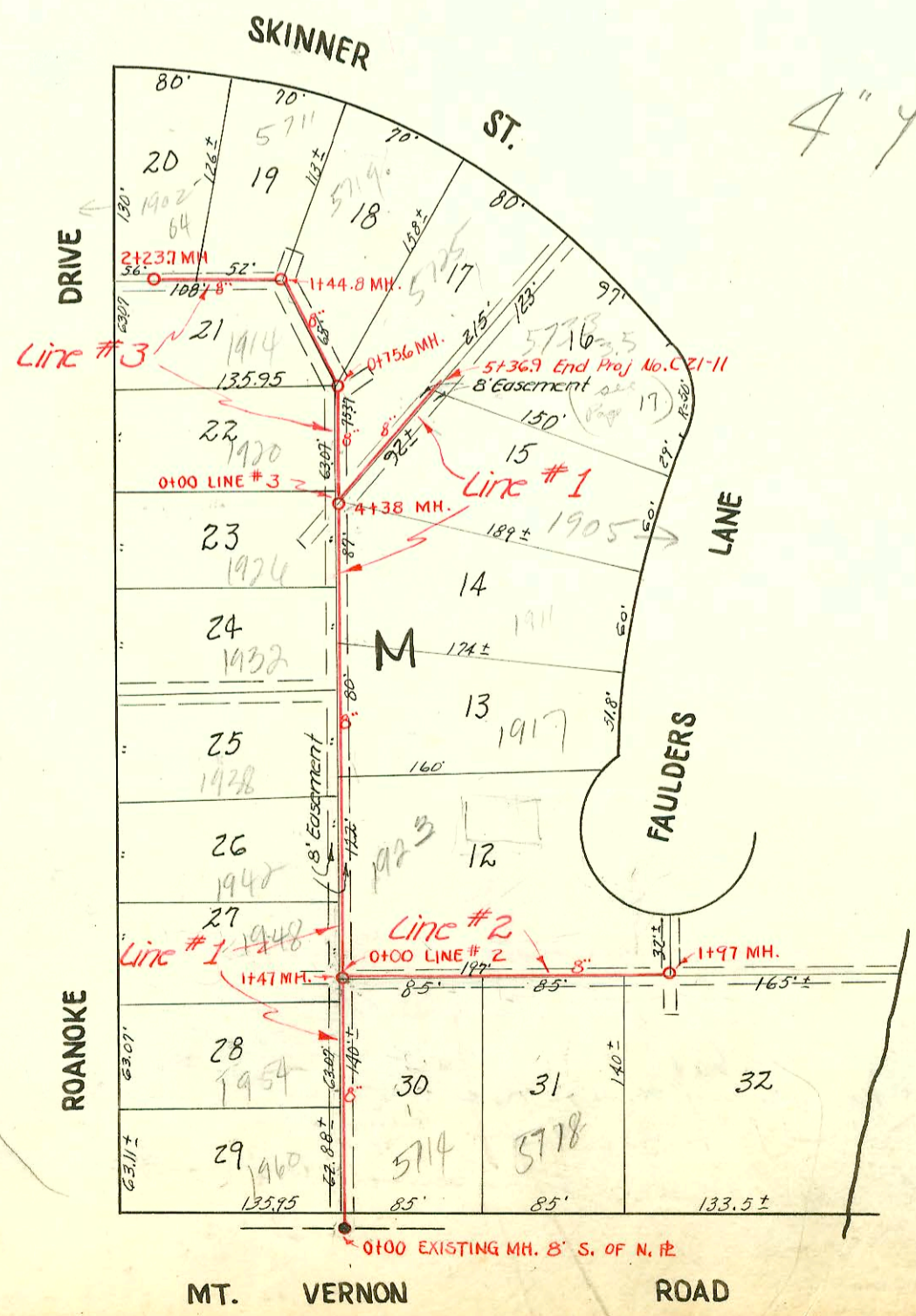


SCALE 1"=100'

LAT. 3, SUB-MAIN 2, W.I.S.
 W. B. CARTER JUNE, 1951
 PROJECT NO. C21-10 BOOK NO. M-12
 6-25-51

4" ya

4
 2/5
 3/1
 2/11



SCALE 1"=100'

LAT. 4, SUB-MAIN 2, W.I.S.
 W. B. CARTER JUNE, 1951
 PROJECT NO. C21-11 BOOK # M-12
 6-25-51

4" y 5

CONSTRUCTION RECORD

SERVICE RECORD

STATION	ELEVATION		Depth	MANHOLE	4-INCH "Y" BRANCHES		No. of Permit		House Number		DATE OF PERMITS	
	Ground	Grade			North West	South East	North West	South East	North West	South East	North West	South East
0+00	136.9	124.60	12.3	0+00 Exist'g M.H.								
1+00	135.0	125.00	10.0									
2+00	133.9	125.40	8.5			2+08.4						
3+00	133.4	125.80	7.58			+47.0		#7013	5714 E. Skinner			1-11-52
3+32.1	134.1	125.93 in 125.71 Out	8.7	3+32.1	Y WEST	Y EAST						
4+00	134.6	126.21	8.4		3+51	3+48	#5136	#7010	1832 Roanoke	1831 Faulders	7-3-51	1-11-52
5+00	135.79	126.61	9.2		4+03.9	4+01.9	#5135	#7009	1825 Roanoke	1819 Faulders	7-3-51	1-11-52
6+00	137.2	127.01	10.2		4+69.6	4+66.6	#5134	#7008	1820 Roanoke	1813 Faulders	7-3-51	1-11-52
6+03.6	137.3	127.03	10.3	6+03.6	5+33.1	5+30.1	#5133	#7007	1818 Roanoke	1807 Faulders	7-3-51	1-11-52
7+00	139.00	127.41	11.6		+96.8	+93.8		#7006				
8+00	140.9	127.81	13.1		6+51.9	6+48.9	#5131	#7005	1822 Roanoke	1801 Faulders	7-3-51	1-11-52
8+76.6	142.3	128.11 in 132.10 Out	10.2	8+76.6	4" SCH 40 - CO	7+79.6	#5130	#6005	1748 Roanoke	1749 Faulders	7-3-51	5-8-51
9+00	142.7	132.20	10.5		8+43.3	8+40.3	#5129	#6004	1744 Roanoke	1743 Faulders	7-3-51	10-1-51
10+00	143.9	132.60	11.3		9+14.2	9+11.2	#5128	#6003	1738 Roanoke	1737 Faulders	7-3-51	10-1-51
11+00	144.4	133.00	11.4		+84.6	+81.6	#5127	#6002	1732 Roanoke	1731 Faulders	7-3-51	10-1-51
11+63.7	144.5	133.24	11.3	11+63.7	10+48.1	10+45.1	#5126	#6001	1726 Roanoke	1725 Faulders	7-3-51	10-1-51
0+00	134.1	126.03	8.1	0+00 = 3+32.1 in Line #5	(4" stub N.E.)	Y SOUTH		#6000	1719 Faulders			10-1-51
0+86.6	134.3	126.37	7.9	0+86.6	Y SOUTH	0+22.0		#5999	1715 Faulders			10-1-51
						+75.8		#7012	4708 E. Skinner			1-11-52
								#7011	5702 E. Skinner			1-11-52

2001-01116-51861-1747 S Faulders - Rob Roster - 4" SCH 40 - 17 IN WACO, 2 Fernco to clay - CO Riser + 6' of pipe
 2002-03302-1219102-1926 S Roanoke - Bammes - 4" PVC, 17 IN WACO, tied to clay tile @ EPL

LAT. 4, SUB 2, W.I.S.

Line #1

STATION	Ground	Grade	Depth	MANHOLE	Y WEST	Y EAST	No. of Permit	House Number	DATE OF PERMITS
0+00	129.1	115.17	14.0	0+00 Exist'g M.H.	0+17.2		#6856	1960 Roanoke	12-18-51
1+00	130.2	115.57 in 115.76	14.6		+82.3				
1+47	131.0	119.16 Out	11.8	1+47	1+60.4	1+57.4	#5416 #6858	1948 R Roanoke	3-22-82 12-18-51
2+00	131.2	119.36	11.9		+87.0				
3+00	129.9	119.76	10.2		2+51.8	2+72.5	#00276 #3161	1917 R Faulders	5-8-52 11-10-52
4+00	130.4	120.16	10.2		3+09.7	3+12.7			
4+38	130.4	120.31	10.1	4+38	+51.5				
5+00	128.1	120.56	7.5		3+79.6	Y SOUTH	#3159 #1670	1905 Faulders	11-10-52 6-18-52
5+36.7	End proj No. C 21-11					4+55.6		1905 Faulders	1-16-68

Line #2

STATION	Ground	Grade	Depth	MANHOLE	Y SOUTH	No. of Permit	House Number	DATE OF PERMITS
0+00	130.7	115.82	14.9	0+00 = 1+47 in Line #1	4" SCH 40 - 17 IN WACO 0+51.6	#3163	5714 R Mt. Vernon	1-25-94 11-10-52
1+00	127.7	116.20	11.5		1+06	#3164	5718 Mt. Vernon	11-10-52
1+97	118.5	116.59	1.9	1+97	End Prod. No. C 21-11			

Line #3

STATION	Ground	Grade	Depth	MANHOLE	Y WEST	Y EAST	No. of Permit	House Number	DATE OF PERMITS
0+00	130.4	120.42	10.0	0+00 = 4+38 in Line #1	0+13.0	0+10.0			
0+75.6	131.3	120.72	10.6	0+75.6	+91.9	+88.9			
1+00	130.7	120.82	9.9		Y NORTH	Y SOUTH			
1+44.8	131.7	121.00	10.7	1+44.8	1+67.2	1+67.2	#3218 #2000-00806 #1671	5711 E Mt. Vernon	11-13-52 6-30-52
2+00	133.4	121.22	12.2		2+15.7				
2+23.7	134.4	121.31	13.1	2+23.7					

#5125 - 2nd - 1720 Roanoke - 7-3-51 - Robinson Pkg Co.
 #5132 - 2nd - 1808 Roanoke - 7-3-51 - Robinson Pkg Co.
 #3160 - 2nd - 1911 Faulders - 11-10-52 - Eugene Reynolds
 #3162 - 2nd - 1923 Faulders - 11-10-52 - Eugene Reynolds
 #1834 - 2nd - 5719 E. Skinner - 7-9-52 - Joe Mc Donald
 #1835 - 2nd - 5725 E. Skinner - 7-9-52 - Joe Mc Donald
 #1668 - 2nd - 1839 Faulders - 6-18-52 - Joe Mc Donald
 #6859 - 2nd - 1942 Roanoke
 #6860 - 2nd - 1938 Roanoke
 #6861 - 2nd - 1932 Roanoke
 #6862 - 2nd - 1926 Roanoke
 #6863 - 2nd - 1920 Roanoke
 #6864 - 2nd - 1914 Roanoke
 #6857 - 2nd - 1954 Roanoke
 Eugene Reynolds
 see above
 12-18-51