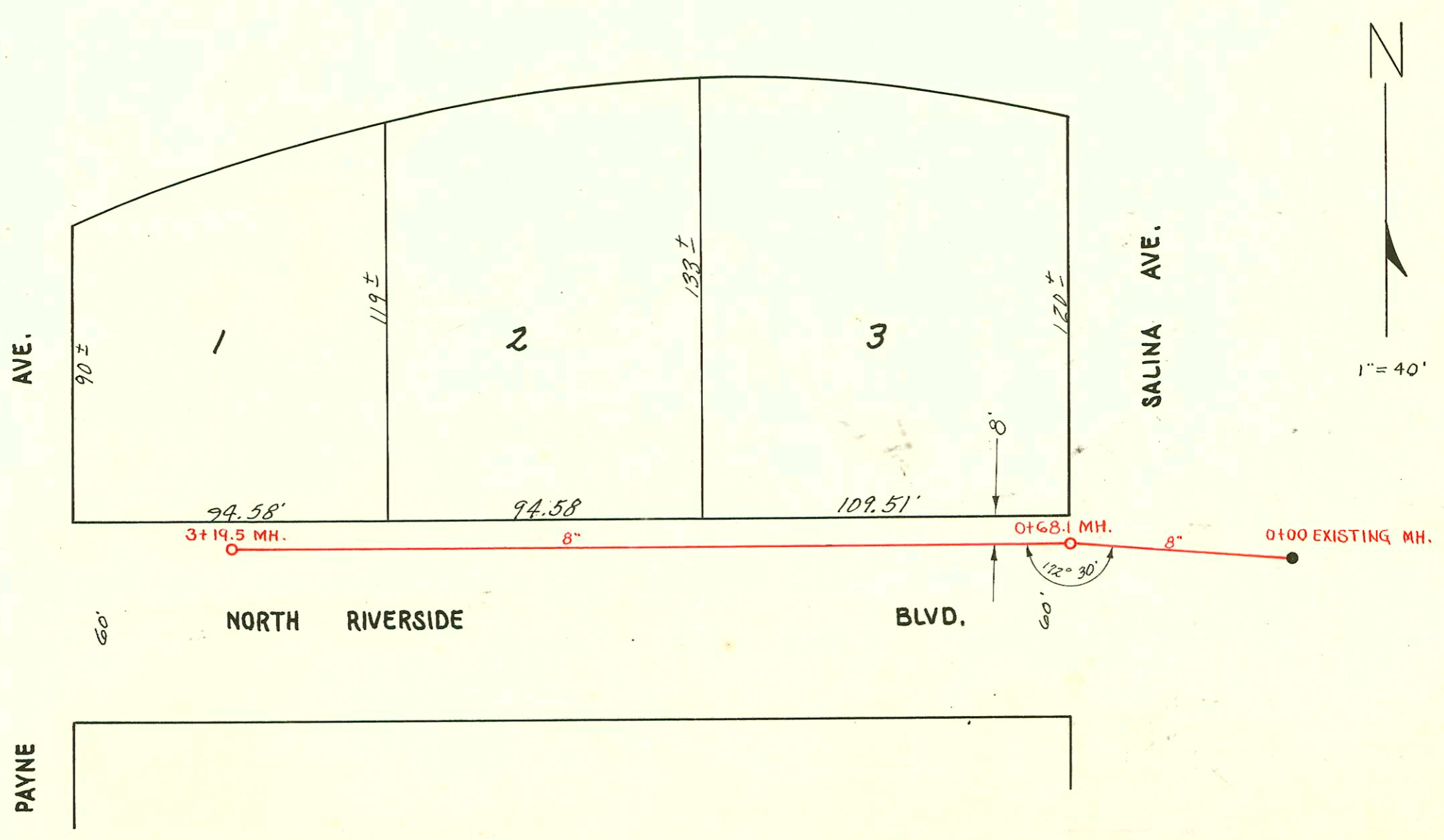


NOTE: See drawing for line #4, lot 5, Sub 2, W. 1/4, on page 17. 473



SUB. LAT. T, DIST. R, NO. 20
 W. B. CARTER ~ 1951
 PROJECT NO. C 21-26
 BK. NO. M-17
 Sept. 3, 1951

CONSTRUCTION RECORD

SERVICE RECORD

STATION	ELEVATION		Depth	MANHOLE	4-INCH "Y" BRANCHES		No. of Permit		House Number		DATE OF PERMITS	
	Ground	Grade			North West	South East	North West	South East	North West	South East	North West	South East
See drawing on page 17 for line #4												
0+00	137.1	128.60	8.5	0+00 = 10+11.8 in line #1	0+14	0+11	#5931	#3715	1826	1831		1-8-52
1+00	129.2	129.00	10.2		+74.8 4" PVC 40 +73.5	+71.8 4" PVC 40 +71.5	#5931	#3715	1826	1831	9-27-51	9-27-51
2+00	140.6	129.40	11.2		+98.8	+95.8	#5931	#3715	1826	1831	9-27-51	9-27-51
2+73.4	141.3	129.69	11.6	2+73.4	2+57.0	2+54.0	#5931	#3715	1826	1831	9-27-51	9-27-51
3+00	141.5	129.80	11.7		3+20.9	3+17.9	#5931	#3715	1826	1831	9-27-51	9-27-51
4+00	141.7	130.20	11.5		4+43.0	4+40.0	#5931	#3715	1826	1831	9-27-51	9-27-51
5+00	142.4	130.60	11.8		5+10.4	5+07.4	#5931	#3715	1826	1831	9-27-51	9-27-51
5+45.8	142.7	130.78	11.9	5+45.8	+76.0	+73.0	#5931	#3715	1826	1831	9-27-51	9-27-51
6+00	143.1	131.00	12.1		6+42.7	6+39.7	#5931	#3715	1826	1831	9-27-51	9-27-51
7+00	143.8	131.40	12.4		7+09.6	7+06.6	#5931	#3715	1826	1831	9-27-51	9-27-51
8+00	143.8	131.80	12.0		+79.5	+76.5	#5931	#3715	1826	1831	9-27-51	9-27-51
8+18.6	143.7	131.87	11.8	8+18.6	8+43.1	8+40.1	#5931	#3715	1826	1831	9-27-51	9-27-51
9+00	142.8	132.20	10.6		9+09.3	9+06.3	#5931	#3715	1826	1831	9-27-51	9-27-51
10+00	141.3	132.60	8.7		+75.9	+72.9	#5931	#3715	1826	1831	9-27-51	9-27-51
10+91.5	141.4	132.96	8.5	10+91.5	10+04.9		#5931	#3715	1826	1831	9-27-51	9-27-51
11+00	141.4	133.00	8.4		11+14.0	11+11.0	#5931	#3715	1826	1831	9-27-51	9-27-51
12+00	142.7	133.40	9.3		+71.0	+68.0	#5931	#3715	1826	1831	9-27-51	9-27-51
13+00	144.6	133.80	10.8		12+36.5	12+33.5	#5931	#3715	1826	1831	9-27-51	9-27-51
13+64.3	145.7	134.06	11.6	13+64.3	13+03	13+00	#5931	#3715	1826	1831	9-27-51	9-27-51
14+00	146.0	134.20	11.8		+81.7	+78.7	#5931	#3715	1826	1831	9-27-51	9-27-51
15+00	146.1	134.60	11.5		14+38.2	14+35.7	#5931	#3715	1826	1831	9-27-51	9-27-51
16+00	145.2	135.00	10.2		15+01.0	14+98.0	#5931	#3715	1826	1831	9-27-51	9-27-51
16+34.6	144.9	135.14	9.8	16+34.6	15+68.8	15+65.8	#5931	#3715	1826	1831	9-27-51	9-27-51
					16+22.9	16+19.9	#5931	#3715	1826	1831	9-27-51	9-27-51

LAT. 55. D.C.S. S.S. #12

See drawing for this line on page 19

STATION	Ground	Grade	Depth	MANHOLE	Y SOUTH
0+00	150.9	140.00	10.9	0+00	0+42.2
1+00	150.2	140.10	10.1		+97.8
1+08	150.2	140.11	10.0	1+08 OH.	

SUB LAT. T, DIST. R, S.S. NO. 20

STATION	Ground	Grade	Depth	MANHOLE	Y NORTH
0+00	123.15	115.21	7.9	Exist'g MH.	
0+68.1	122.8	115.28 in	7.5	0+68.1	
1+00	122.1	115.41	6.7		
2+00	122.6	115.51	7.1		1+04.8
3+00	122.5	115.61	6.9		2+11.6
3+19.5	122.5	115.63	6.9	3+19.5	+57.3

#5977 Top - 1833 Faulden - 9-27-51 - Bahr Pkg. Co.
 #5939 - Top - 1832 Faulden - 9-27-51 - Bahr Pkg. Co.
 #93-6150-7 1819 S. Green Acres - 3/25/93 - 4" PVC 40, 1/4 Fall, DL. tied out existing wye 189ft north of M.L.